

Benchmark: "□" cut on top of southwest wingwall of bridge over Nettle Creek (S.N. 032-0076) El. 536.39.

STATE OF ILLINOIS  
DEPARTMENT OF TRANSPORTATION

ROUTE NO.	SECTION	COUNTY	SHEET	SHEET NO. 51
86	66	GRUNDY	66	OF 54 SHEETS
FED. ROAD DIST. NO. 7		ILLINOIS	FED. AID PROJECT-	

**GENERAL NOTES**

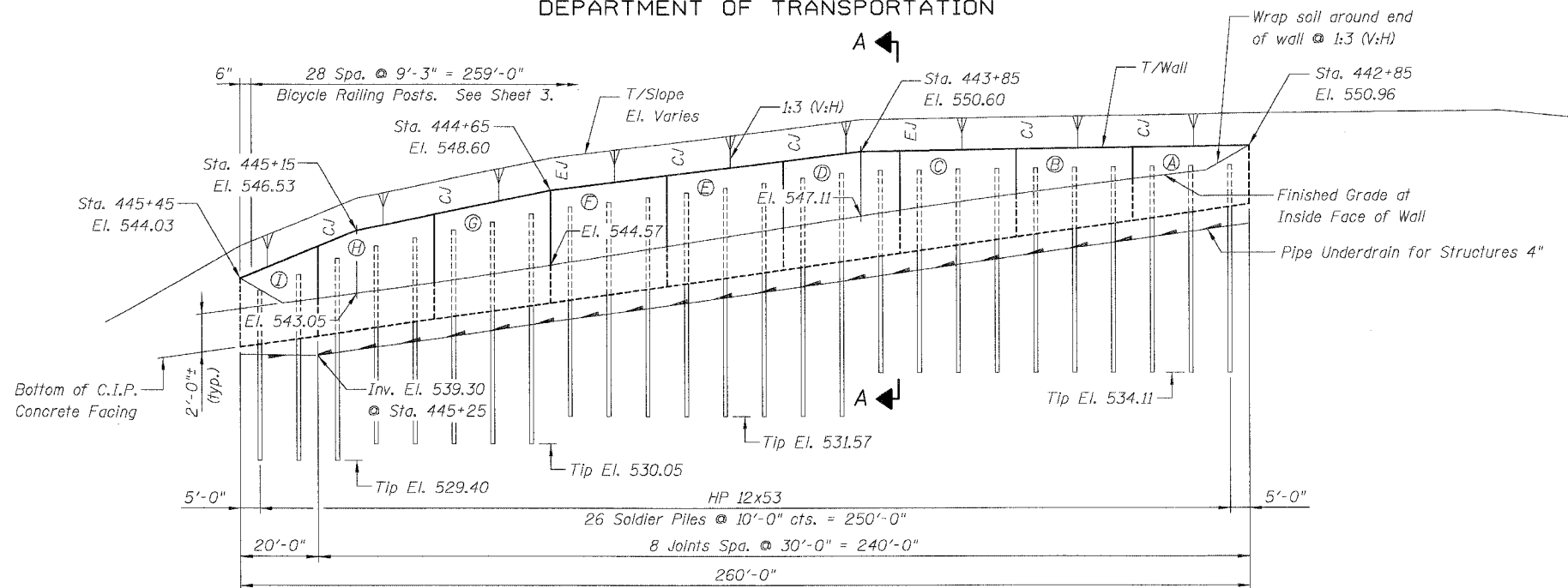
- Protective Coat shall be applied to surfaces of the concrete facing.
- The contractor is responsible for the design and performance of the lagging using no less than a 3" nominal rough-sawn thickness and timber with a minimum allowable bending stress of 1000 psi.
- All exposed concrete edges shall be chamfered 3/4" except as noted.
- See sheet S2 for Section A-A and Wall Details.
- Contractor shall coordinate the retaining wall construction with storm sewer installation as required to ensure stability of the retaining wall.

⊗ Denotes Soil Boring location

**CONSTRUCTION SEQUENCE**

- Position pile and drive to tip elevation shown in plans.
- Excavate in front of wall in stages removing only the soil necessary to place each timber lagging snug against excavated surface.
- After the lagging has been placed to the depths shown in the plans, the Geocomposite Wall Drain shall be attached to and cover the untreated timber lagging.
- The Pipe Underdrain shall be constructed by excavating a trench, lining it with fabric, placing a pipe and aggregate such that the Geocomposite Wall Drain is connected as shown on the plans.
- Attach shear studs, set reinforcement, form and pour C.I.P. concrete facing.

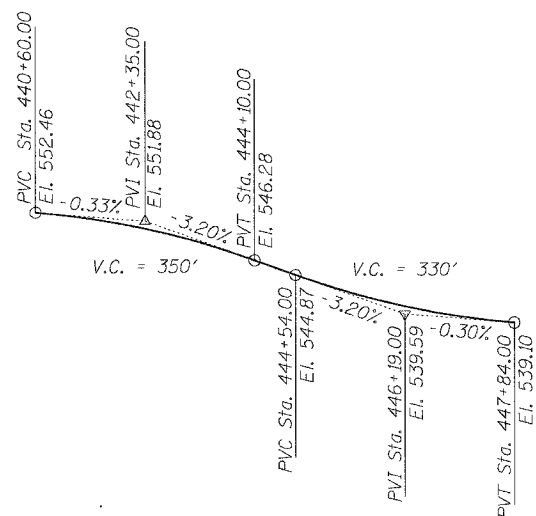
Note A:  
Connect Pipe Underdrain to M.H. 6 at Inv. El. 538.85.  
Pipe Underdrain to have 1% minimum slope.



Notes: -CJ and EJ denote Construction Joint and Expansion Joint, respectively.  
- (A), (B), etc. are labels used for reinforcement detailing.  
(see "Reinf. Details" and "Table of Panel Dim.," sht. S2)

**ELEVATION**

(Looking at Inside Face of Wall)

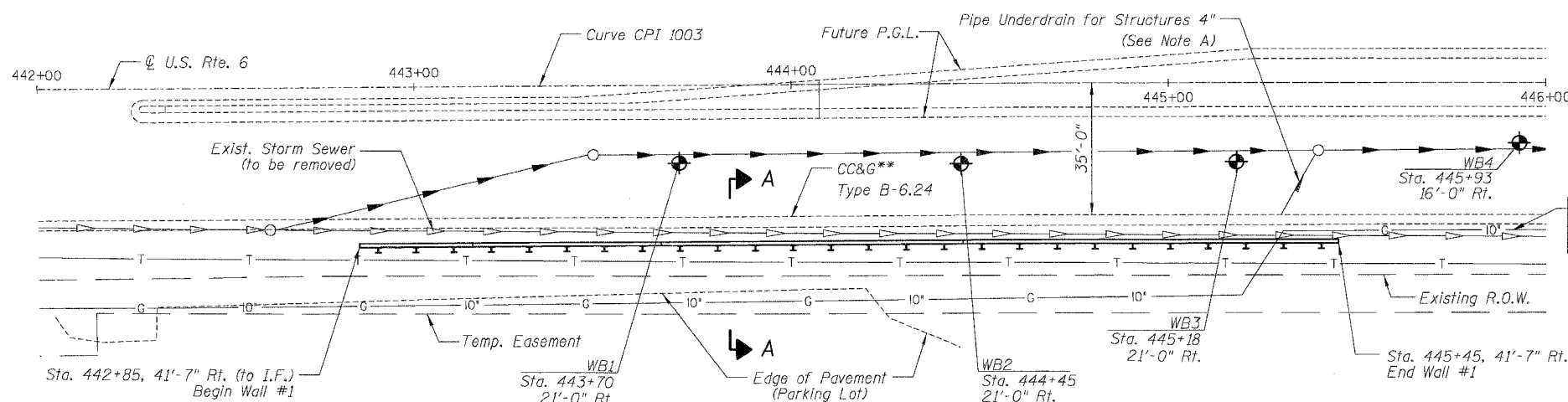


**PROFILE GRADE LINE**  
9' RT. & LT. OF U.S. ROUTE 6

Future P.G.L. See Roadway Plans for limits of work this contract.

DESIGNED	BLU
CHECKED	MRM
DRAWN	MRM
CHECKED	BLU

DATE: 3/19/07

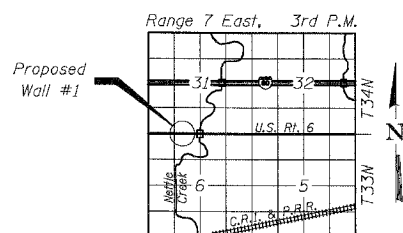


**PLAN**

**BILL OF MATERIAL**

ITEM	UNIT	TOTAL
Structure Excavation	Cu. Yd.	178
Reinforcement Bars, Epoxy Coated	Pound	7,620
Stud Shear Connectors	Each	226
Concrete Structures	Cu. Yd.	49.0
Untreated Timber Lagging	Sq. Ft.	787
Geocomposite Wall Drain	Sq. Yd.	124
Furnishing Soldier Piles (HP Sections)	Foot	403
Driving and Setting Soldier Piles	Foot	403
Protective Coat	Sq. Yd.	119
Pipe Underdrains for Structures 4"	Foot	293
Bicycle Railing	Foot	259

\*\* Plan view shows final future condition, see Roadway Plans and Cross Sections for limits of improvements for this contract.



**LOCATION SKETCH**

**DESIGN SPECIFICATIONS**

1996 AASHTO with 1997 thru 2002 Interims

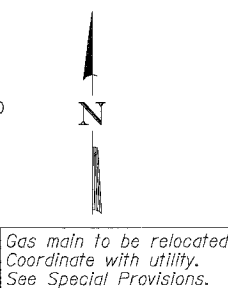
**DESIGN STRESSES**

**FIELD UNITS**

- f'c = 3,500 psi
- fy = 60,000 psi (reinforcement)
- fy = 50,000 psi (Soldier Piles)

**CURVE DATA**

- Curve CPI 1003
- P.I. Sta. = 442+74.13
- Δ = 1° 09' 27" (RT)
- D = 0° 11' 35"
- R = 29,698.99'
- T = 300.00'
- L = 599.97'
- E = 152'
- P.C. Sta. = 439+74.13
- P.T. Sta. 445+74.10



**LEGEND**

- T — Existing Telephone Line
- G — Existing Gas Line
- Existing Storm Sewer
- Proposed Storm Sewer
- Proposed Underdrain

**GENERAL PLAN & ELEVATION**

**RETAINING WALL #1**

**U.S. ROUTE 6**  
**STA 442+85 TO STA. 445+45**  
**FAU 5952-SEC. Q-BR**  
**GRUNDY COUNTY**

BOWMAN, BARRETT & ASSOCIATES INC.  
CONSULTING ENGINEERS  
130 E. RANDOLPH STREET  
CHICAGO, ILLINOIS 60601  
JOB NO. 541

