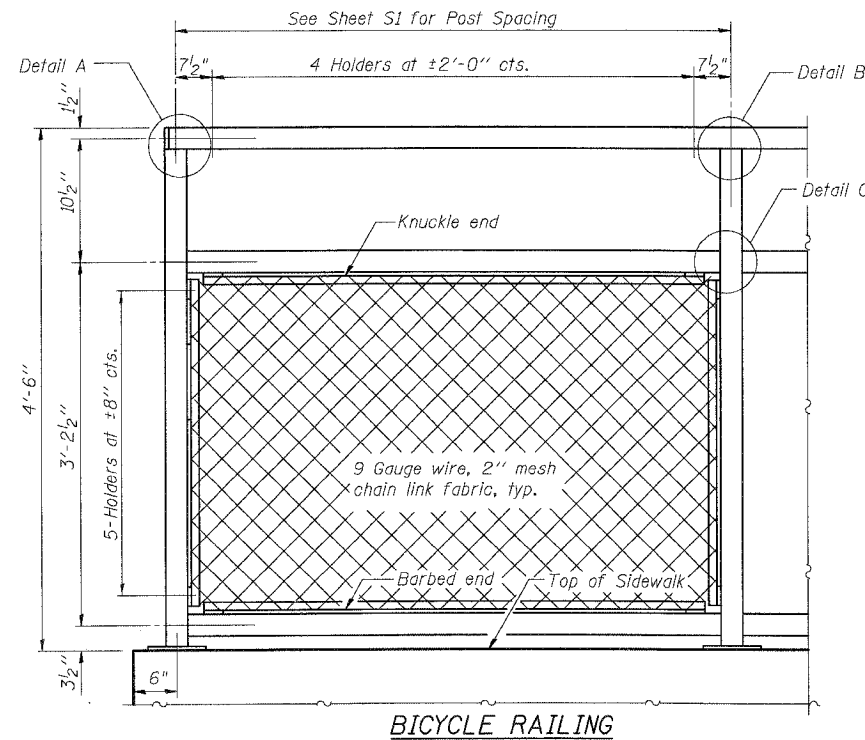


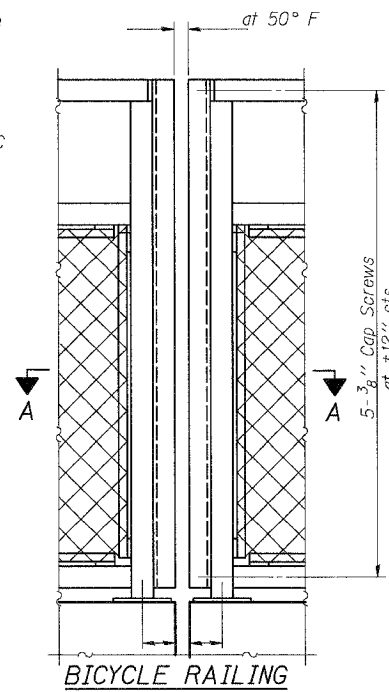
STATE OF ILLINOIS
DEPARTMENT OF TRANSPORTATION

ROUTE NO.	SECTION	COUNTY	TOTAL SHEETS	SHEET NO.	SHEET NO. 53
6. I.L.	Q	GRUNDY	86	68	OF 54 SHEETS
F.A.U. 5952					
FED. ROAD DIST. NO. 7	ILLINOIS	FED. AID PROJECT-			

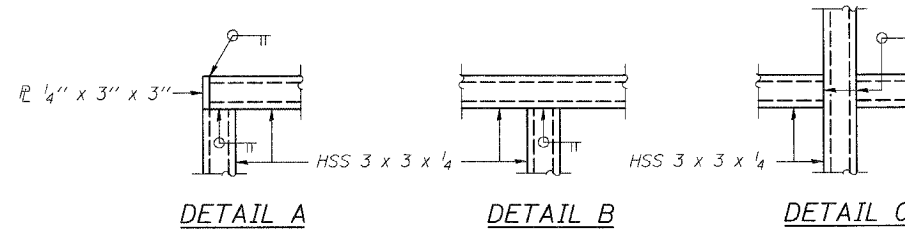
All steel rail elements shall be galvanized according to Article 509.05 of the Standard Specifications. Use only Bicycle Railing and appropriate details. Parapet Railing shall not be used.



BICYCLE RAILING



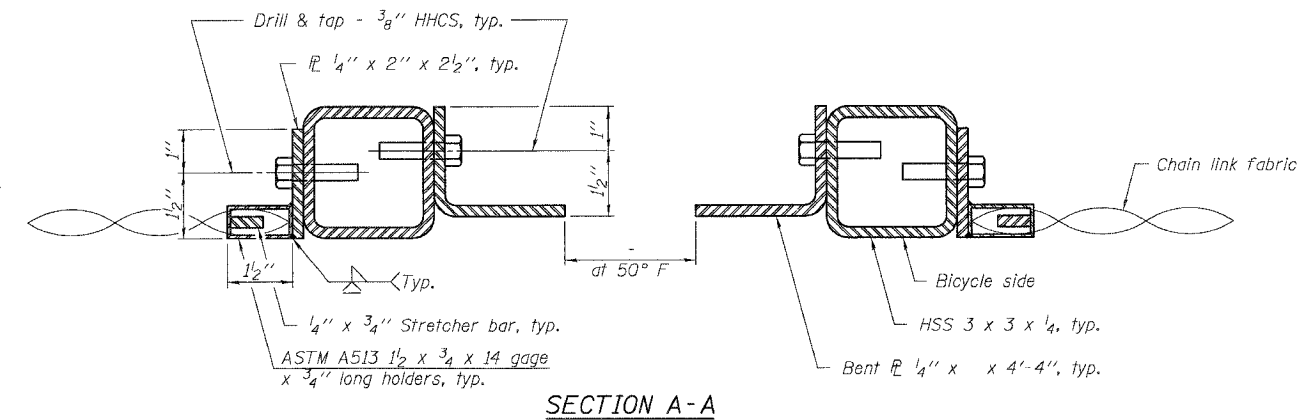
BICYCLE RAILING



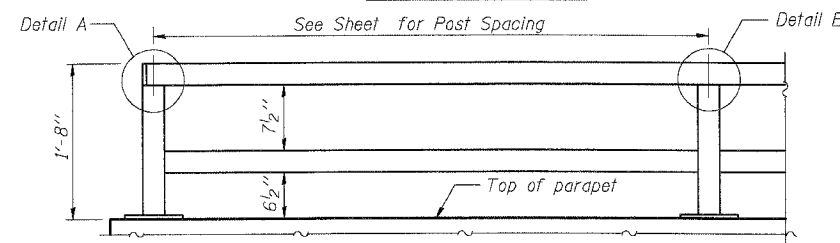
DETAIL A

DETAIL B

DETAIL C

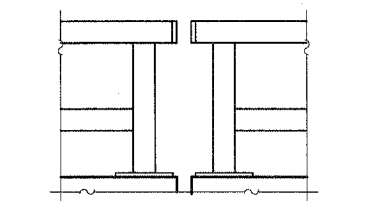


SECTION A-A



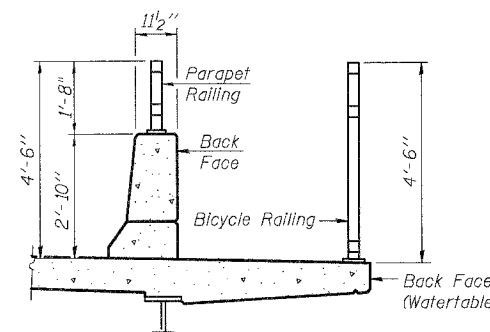
PARAPET RAILING
ELEVATION

(Inside Face of Two Element Rail)

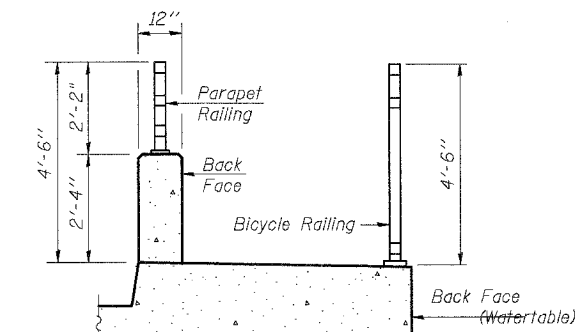


PARAPET RAILING
ELEVATION AT EXPANSION JOINT

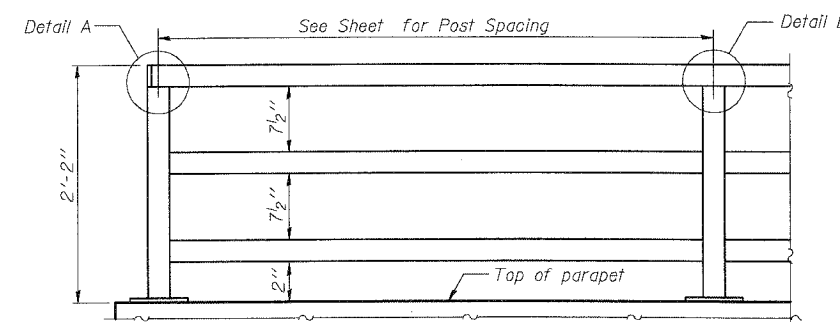
(Two Element Rail Shown - Three Element Rail Similar)



SECTION THRU DECK

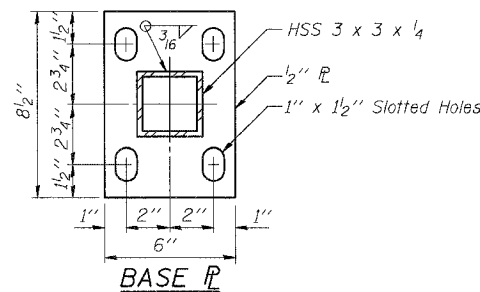


SECTION THRU SIDEWALK

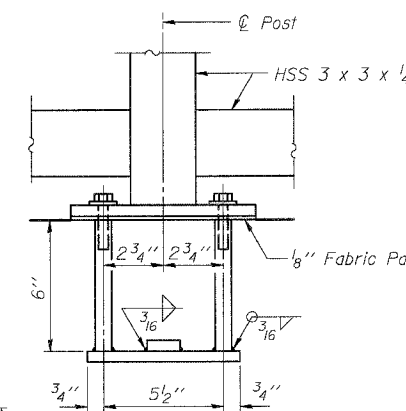


PARAPET RAILING
ELEVATION

(Inside Face of Three Element Rail)

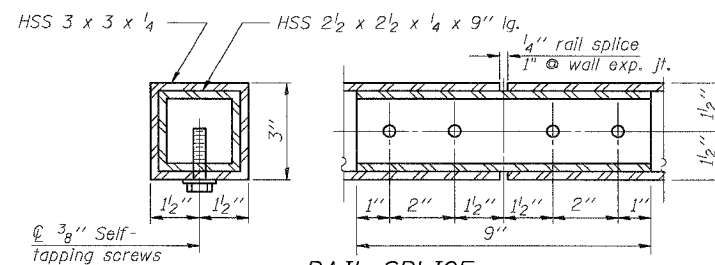
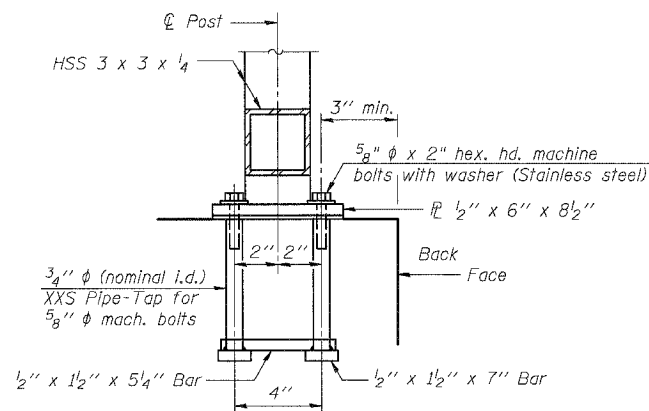


BASE PLATE



ANCHOR BOLT DETAILS

In lieu of the cast-in-place anchor device shown, the Contractor has the option of drilling and setting 5/8" diameter anchor rods according to Article 509.06 of the Standard Specifications. Embedment shall be according to the manufacturer's specifications.



RAIL SPLICE

At wall exp. jt. provide self tapping screws on one side only.

BILL OF MATERIAL

Item	Unit	Quantity
Bicycle Railing	Foot	259

BICYCLE RAILING
RETAINING WALL #1

U.S. ROUTE 6
STA 442+85 TO STA. 445+45
FAU 5952-SEC. Q-BR
GRUNDY COUNTY

BOWMAN, BARRETT
& ASSOCIATES INC.
CONSULTING ENGINEERS
130 E. RANDOLPH STREET
CHICAGO, ILLINOIS 60601
JOB NO. 541



DESIGNED	BLU
CHECKED	
DRAWN	LAM
CHECKED	BLU