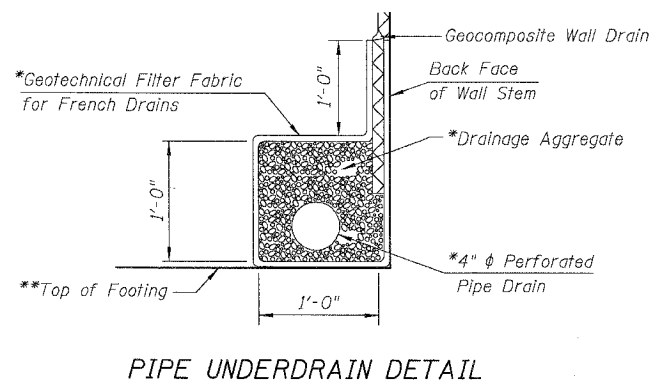
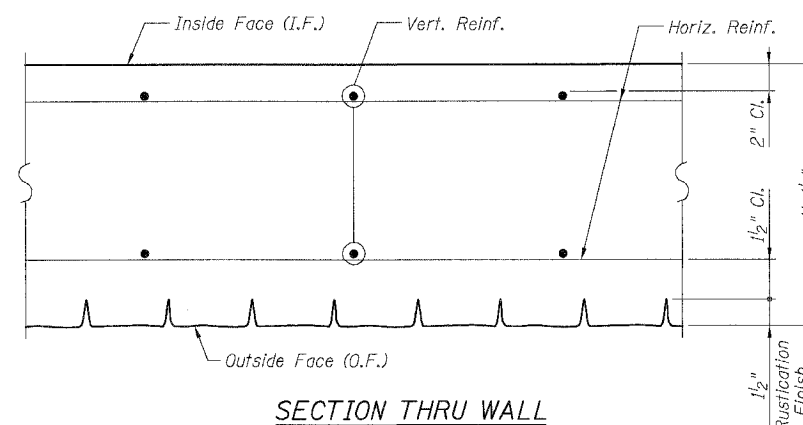
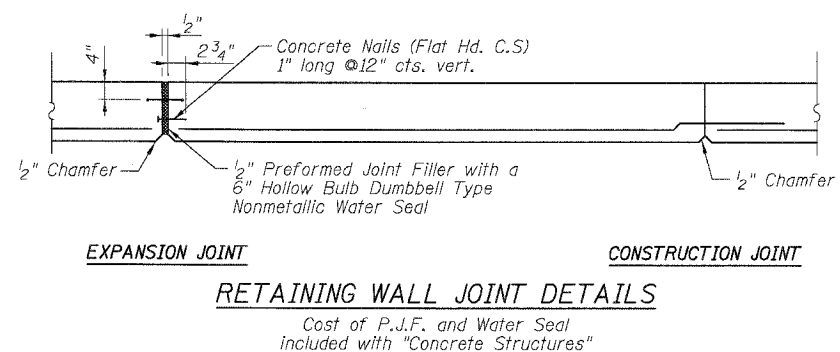
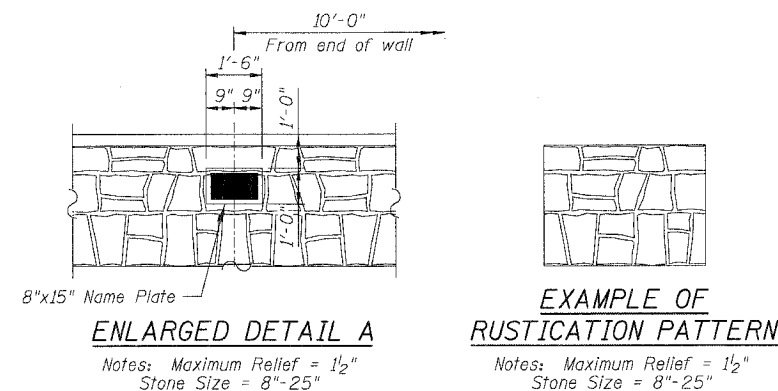
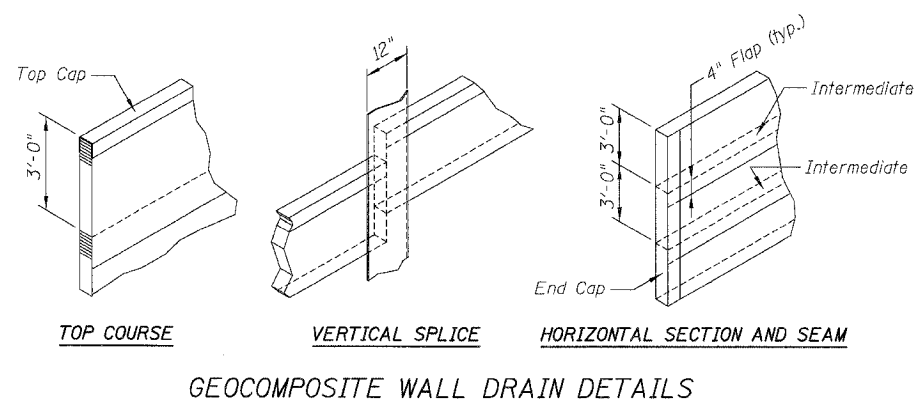


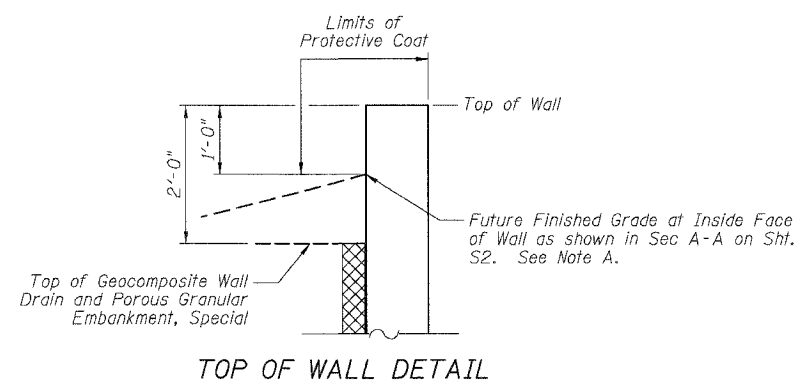
STATE OF ILLINOIS  
DEPARTMENT OF TRANSPORTATION

ROUTE NO.	SECTION	COUNTY	TOTAL SHEETS	SHEET NO.	SHEET NO. 53 OF 54 SHEETS
U. S. L. P. A. U. 5952	①	GRUNDY	86	72	
FED. ROAD DIST. NO. 7	ILLINOIS	FED. AID PROJECT			

① Q-BR



\*Included in the cost of Pipe Underdrains for Structures 4"  
\*\*Provide impervious back fill on top of footing to maintain pipe underdrain invert as shown on Sheet S1. Cost included with Structure Excavation.



Note A: See Roadway Plans and cross sections for finish grade for interim stages and completion of this contract. Contractor shall protect geocomposite wall drain during construction as directed by Engineer.

DESIGNED	BLU
CHECKED	MRM
DRAWN	LAM
CHECKED	BLU

DATE: 3/19/07

BOWMAN, BARRETT & ASSOCIATES INC.  
CONSULTING ENGINEERS  
130 E. RANDOLPH STREET  
CHICAGO, ILLINOIS 60601  
JOB NO. 541



**WALL DETAILS 2**  
**RETAINING WALL #2**  
**STA. 446+48 TO STA. 448+73**  
**U.S. ROUTE 6**  
**FAU 5952-SEC. Q-BR**  
**GRUNDY COUNTY**  
**S.N. 032-8802**