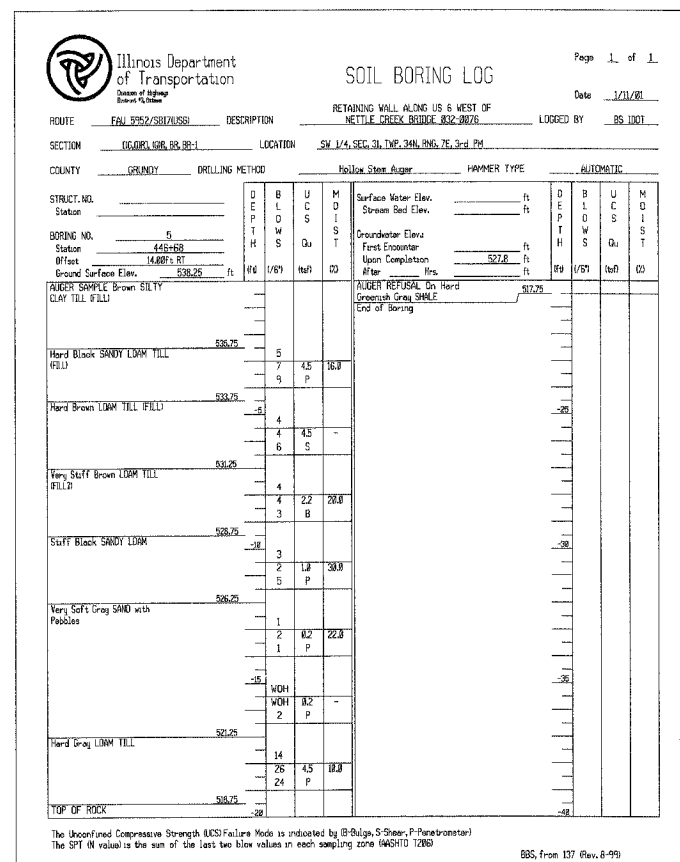


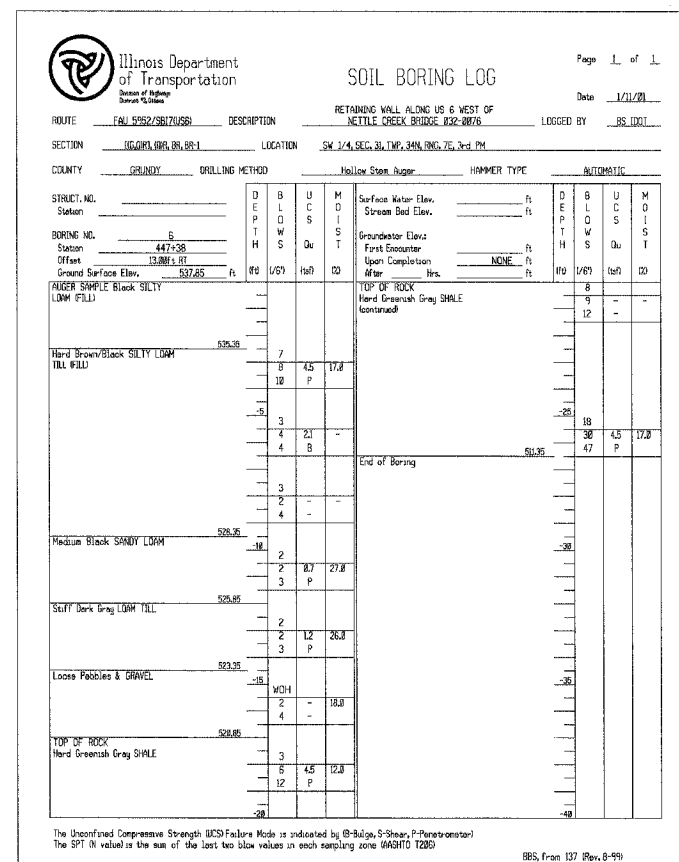
STATE OF ILLINOIS  
DEPARTMENT OF TRANSPORTATION

ROUTE NO.	SECTION	COUNTY	TOTAL SHEETS	SHEET NO.	SHEET NO. 54
S.S.L.	Q	GRUNDY	86	73	OF 84 SHEETS
F.A.L. 0982					
FED. ROAD DIST. NO. 7	ILLINOIS	FED. AID PROJECT-			

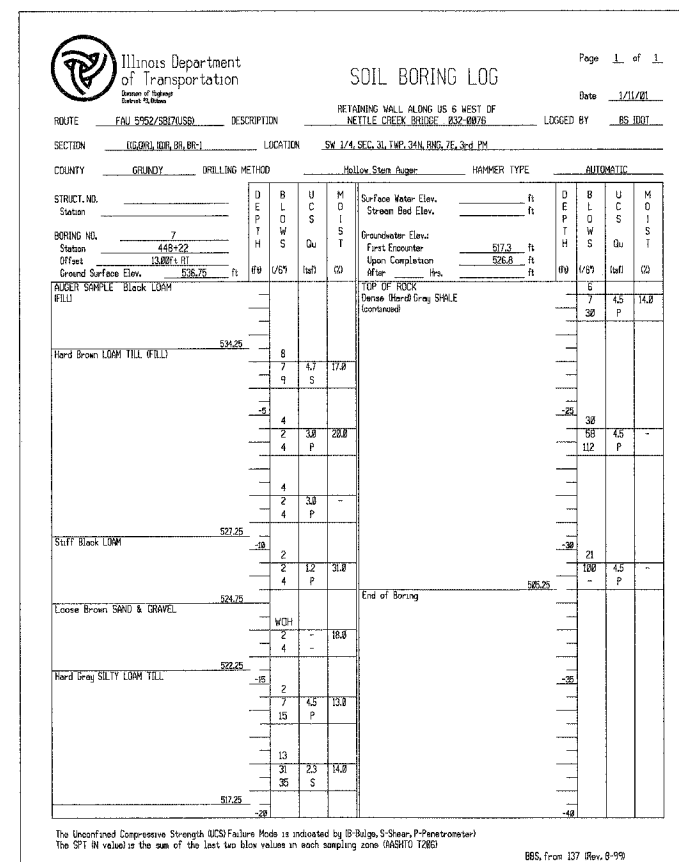
Q-BR



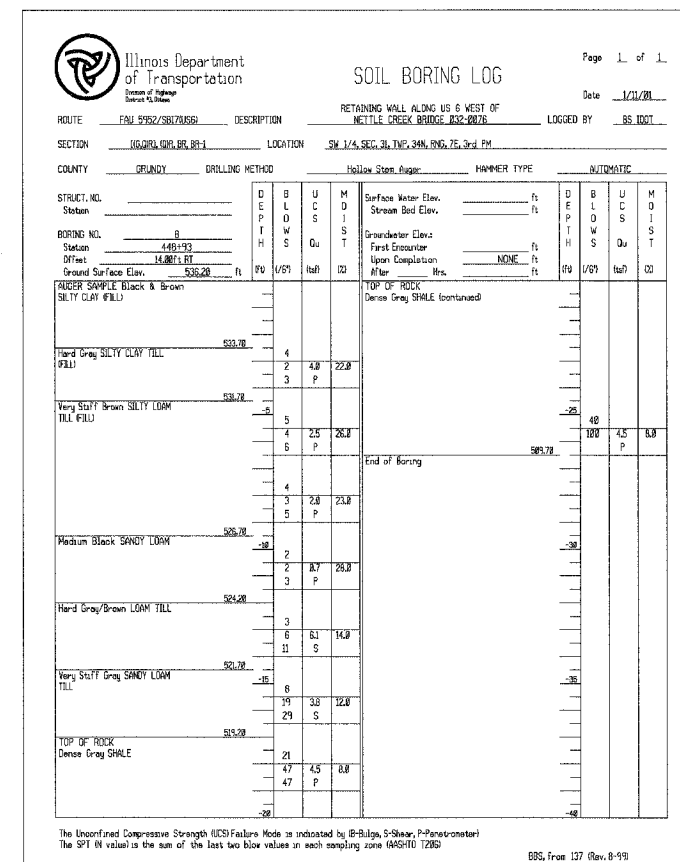
WB5



WB6



WB7



WB8

DESIGNED	BLU
CHECKED	MRM
DRAWN	MRM
CHECKED	BLU

DATE: 3/19/07

BOWMAN, BARRETT  
& ASSOCIATES INC.  
CONSULTING ENGINEERS  
130 E. RANDOLPH STREET  
CHICAGO, ILLINOIS 60601  
JOB NO. 541



SOIL BORINGS  
RETAINING WALL #2  
STA. 446+48 TO STA. 448+73  
U.S. ROUTE 6  
FAU 5952-SEC. Q-BR  
GRUNDY COUNTY  
S.N. 032-8802