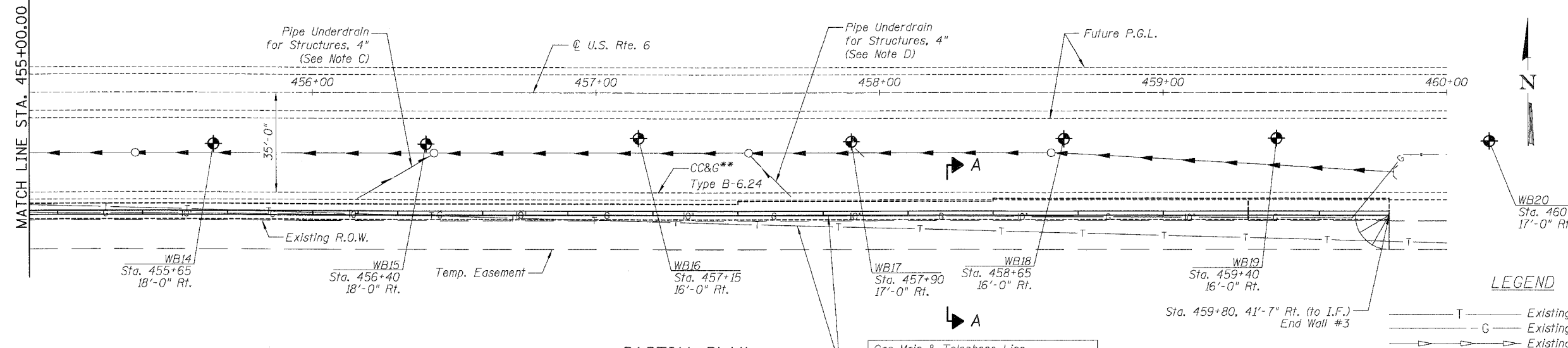
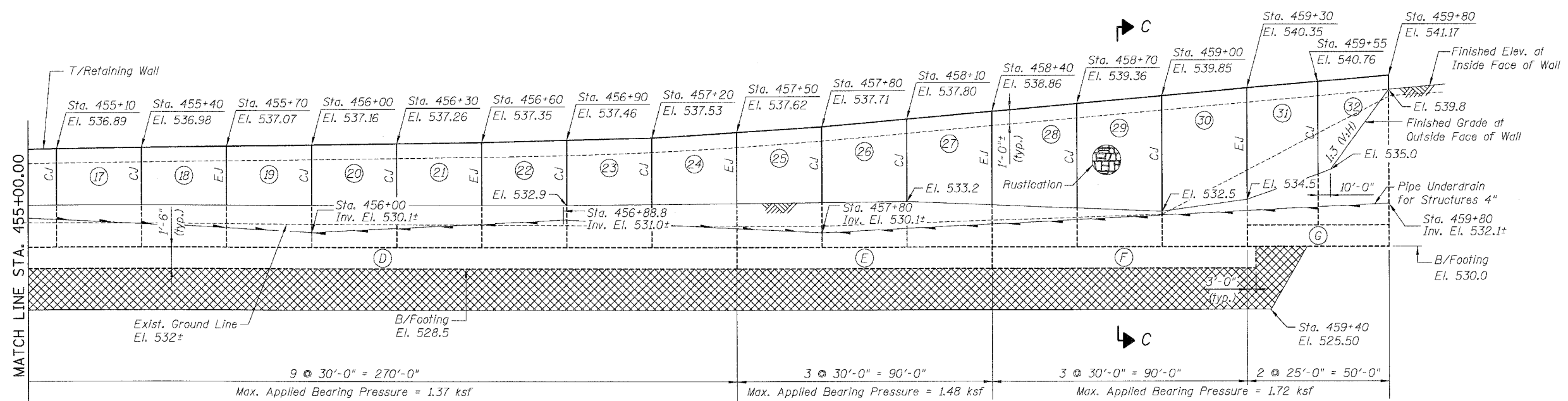


STATE OF ILLINOIS
DEPARTMENT OF TRANSPORTATION

ROUTE NO.	SECTION	COUNTY	DATE	SHEET	SHEET NO. 52 OF 57 SHEETS
U.S. 6	Q	GRUNDY	86	75	
F.A. U. 0902					
FED. ROAD DIST. NO. 7	ILLINOIS	FED. AID PROJECT			



Note C:
Connect to manhole #207 at Inv. El. 529.5±.
Pipe Underdrains to have 1% minimum slope.

Note D:
Connect to manhole #208 at Inv. El. 529.7±.
Pipe Underdrains to have 1% minimum slope.

** Plan view shows final future condition, see Roadway Plans and Cross Sections for limits of improvements for this contract.

LEGEND

— T —	Existing Telephone Line
— G —	Existing Gas Line
— S —	Existing Storm Sewer
— P —	Proposed Storm Sewer
— U —	Proposed Underdrain

GENERAL PLAN & ELEVATION 2
RETAINING WALL #3
STA. 450+35 TO STA. 459+80
U.S. ROUTE 6
FAU 5952-SEC. Q-BR
GRUNDY COUNTY
S.N. 032-8803

BOWMAN, BARRETT & ASSOCIATES INC.
CONSULTING ENGINEERS
130 E. RANDOLPH STREET
CHICAGO, ILLINOIS 60601
JOB NO. 541



DESIGNED	BLU
CHECKED	MRM
DRAWN	MRM
CHECKED	BLU

DATE: 3/19/07

default 3/16/2007 1:50:18 PM n:\541\scad\br\fige\w3_gpe02.dgn