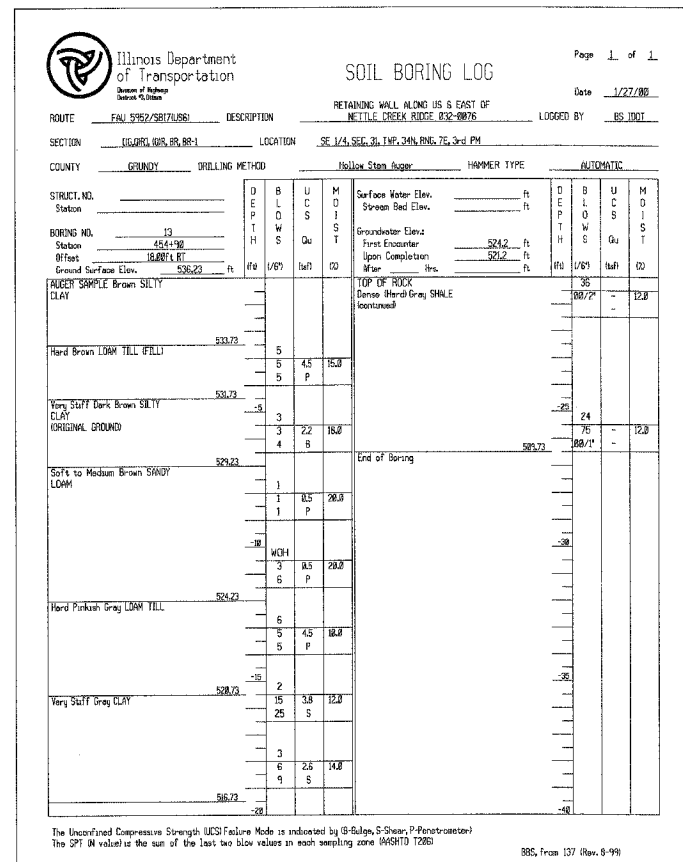


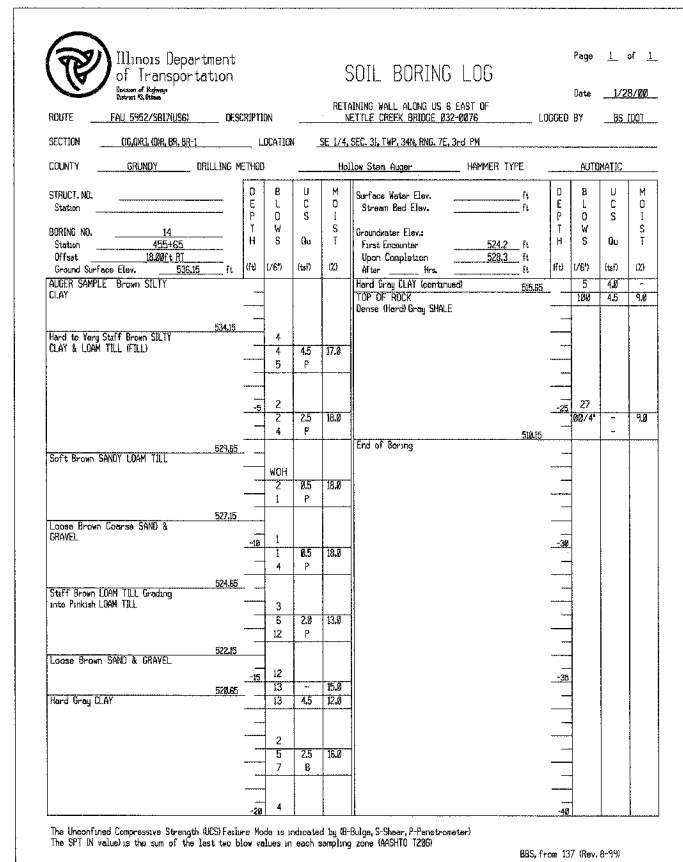
STATE OF ILLINOIS
DEPARTMENT OF TRANSPORTATION

ROUTE NO.	SECTION	COUNTY	TOTAL SHEETS	SHEET NO.	SHEET NO. 56
S. S. E.	Q	GRUNDY	86	79	OF 87 SHEETS
F.A. U. 8952					
FED. ROAD DIST. NO. 7	ILLINOIS	FED. AID PROJECT-			

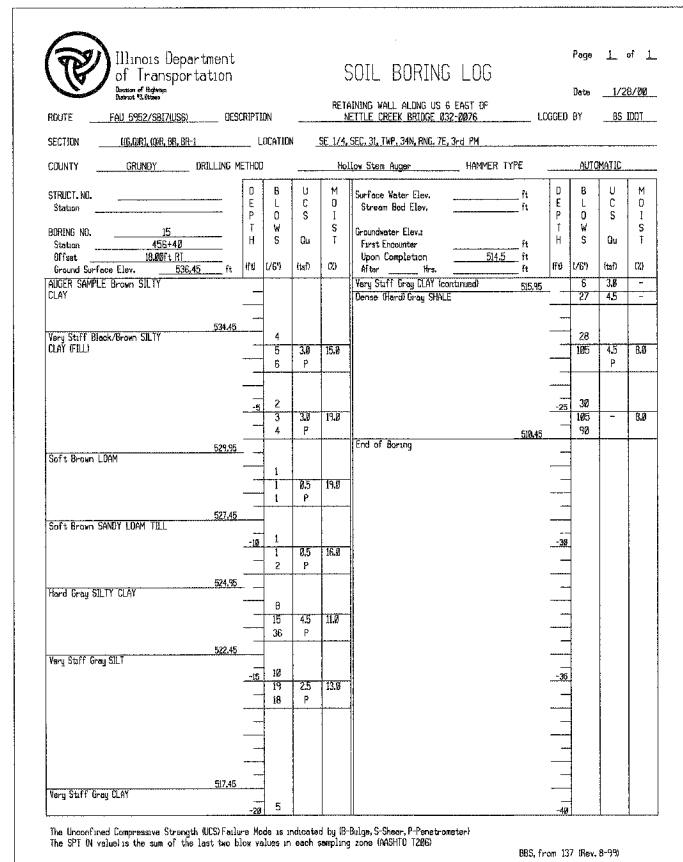
Q-BR



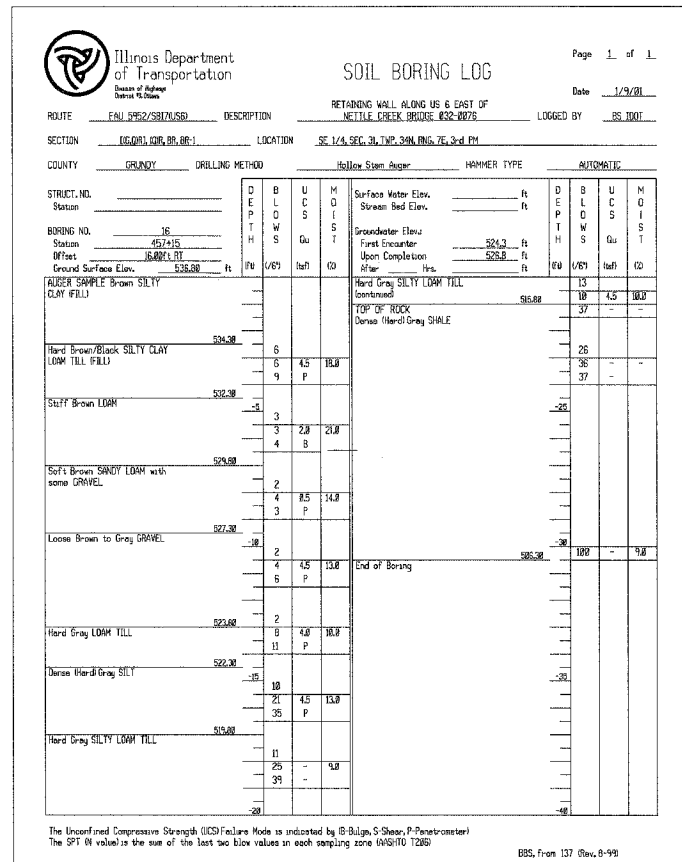
WB13



WB14



WB15



WB16

DESIGNED	BLU
CHECKED	MRM
DRAWN	MRM
CHECKED	BLU

DATE: 3/19/07

SOIL BORINGS 2
RETAINING WALL #3
STA. 450+35 TO STA. 459+80
U.S. ROUTE 6
FAU 5952-SEC. Q-BR
GRUNDY COUNTY
S.N. 032-8803

BOWMAN, BARRETT & ASSOCIATES INC.
CONSULTING ENGINEERS
130 E. RANDOLPH STREET
CHICAGO, ILLINOIS 60601
JOB NO. 541

