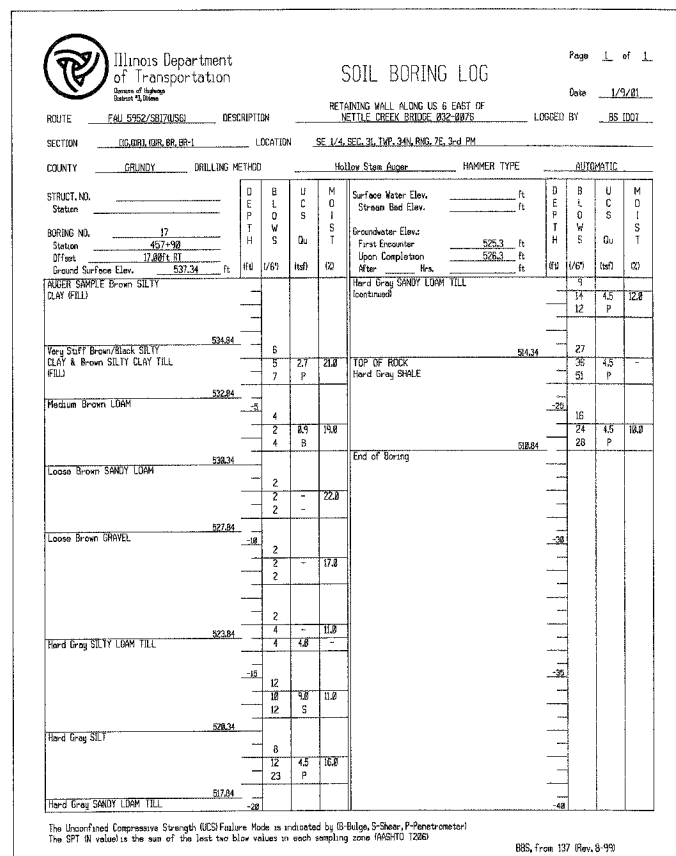


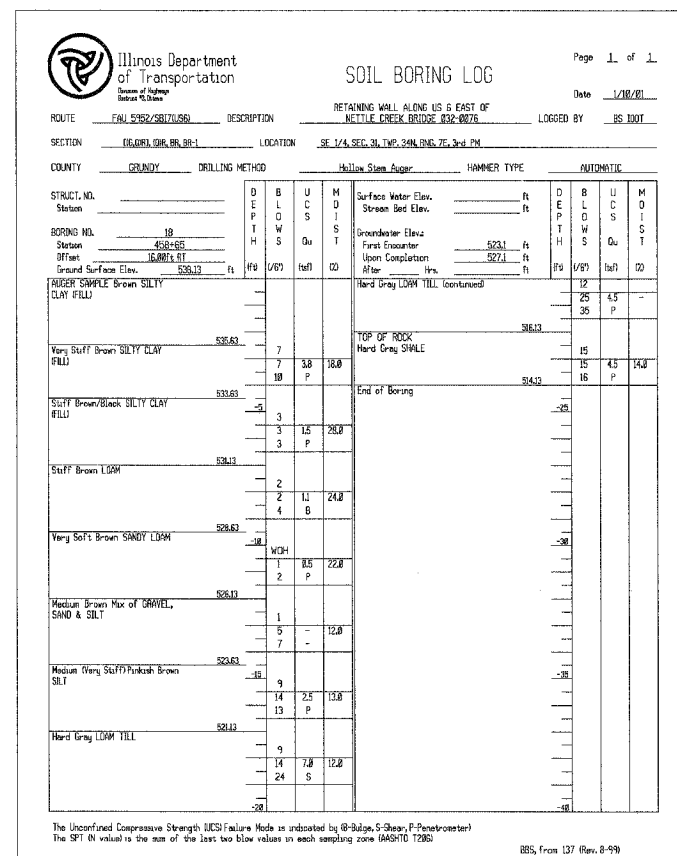
STATE OF ILLINOIS  
DEPARTMENT OF TRANSPORTATION

ROUTE NO.	SECTION	COUNTY	TOTAL SHEETS	SHEET NO.	SHEET NO. 57 OF 57 SHEETS
FAU 5952/5817/550	Q	GRUNDY	86	80	
FILL ROAD DIST. NO. 7		PLAN NO.	FEEL AND PROJECT		

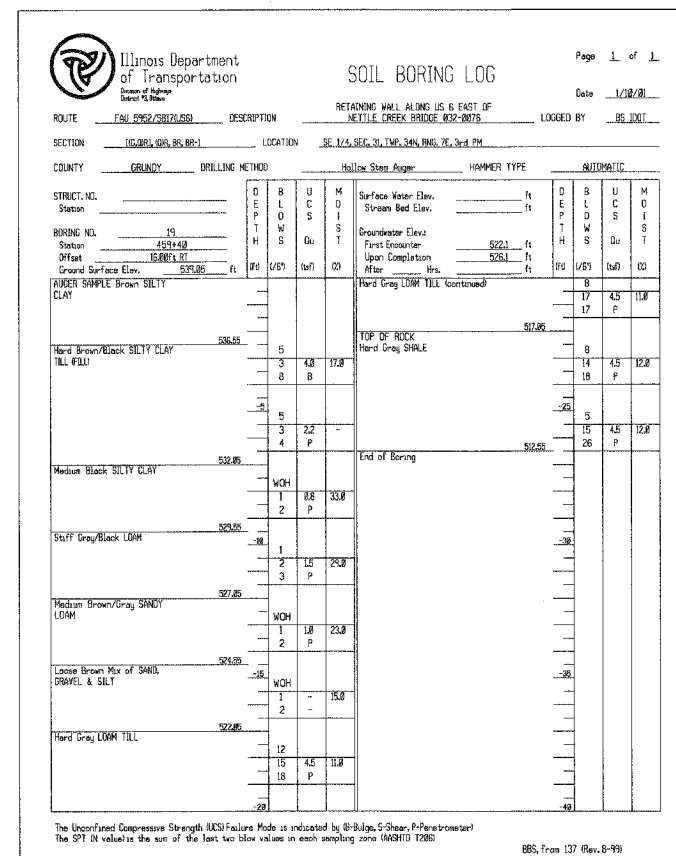
Q-BR



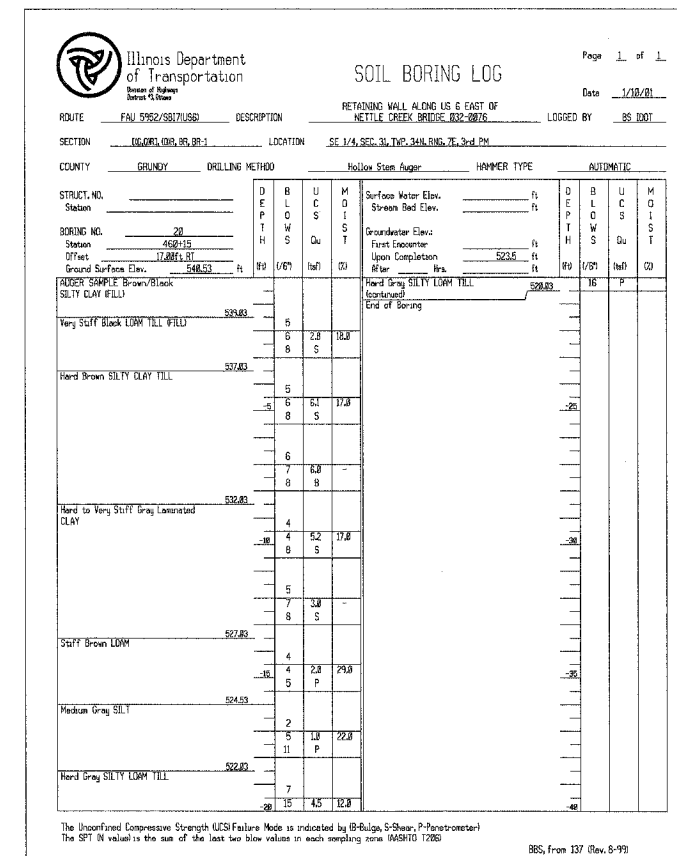
WB17



WB18



WB19



WB20

DESIGNED	BLU
CHECKED	MRM
DRAWN	MRM
CHECKED	BLU

DATE: 3/19/07

BOWMAN, BARETT & ASSOCIATES INC.  
CONSULTING ENGINEERS  
130 E. RANDOLPH STREET  
CHICAGO, ILLINOIS 60601  
JOB NO. 541



SOIL BORINGS 3  
RETAINING WALL #3  
STA. 450+35 TO STA. 459+80  
U.S. ROUTE 6  
FAU 5952-SEC. Q-BR  
GRUNDY COUNTY  
S.N. 032-8803