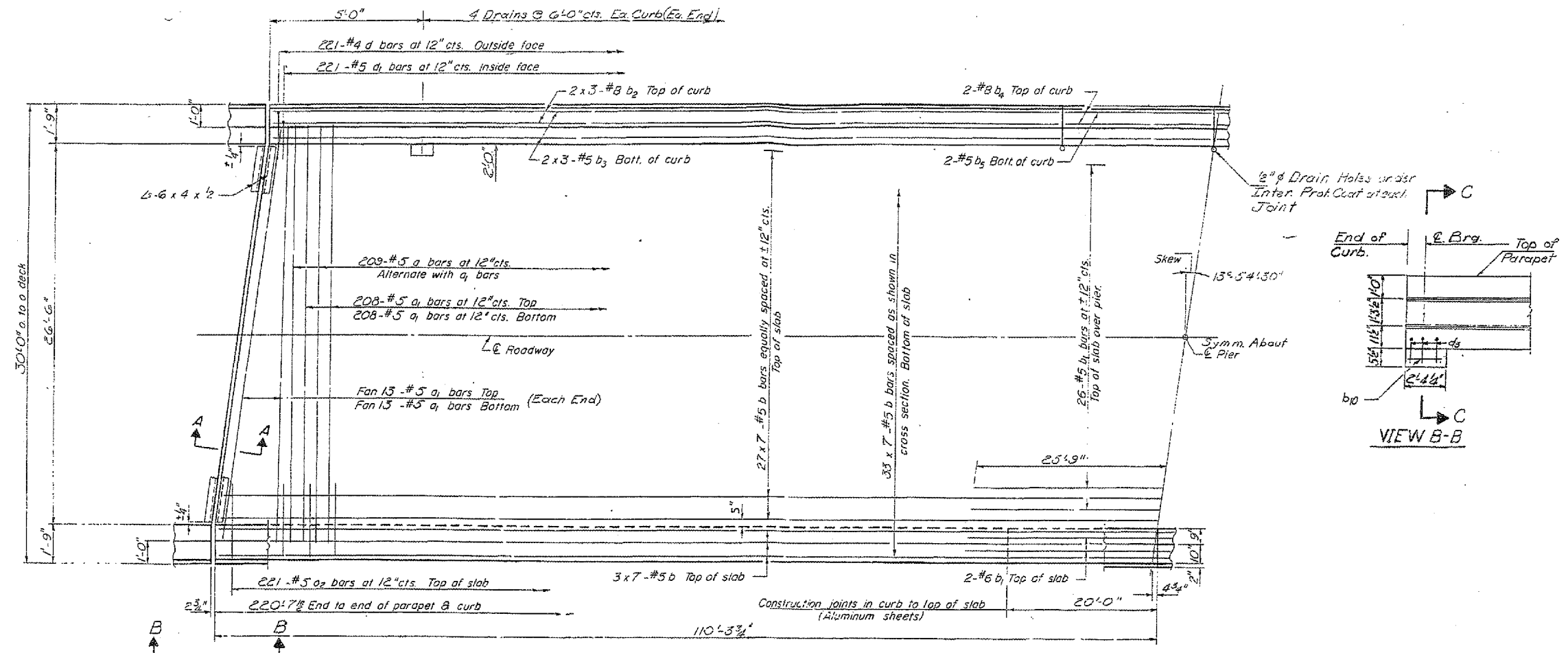
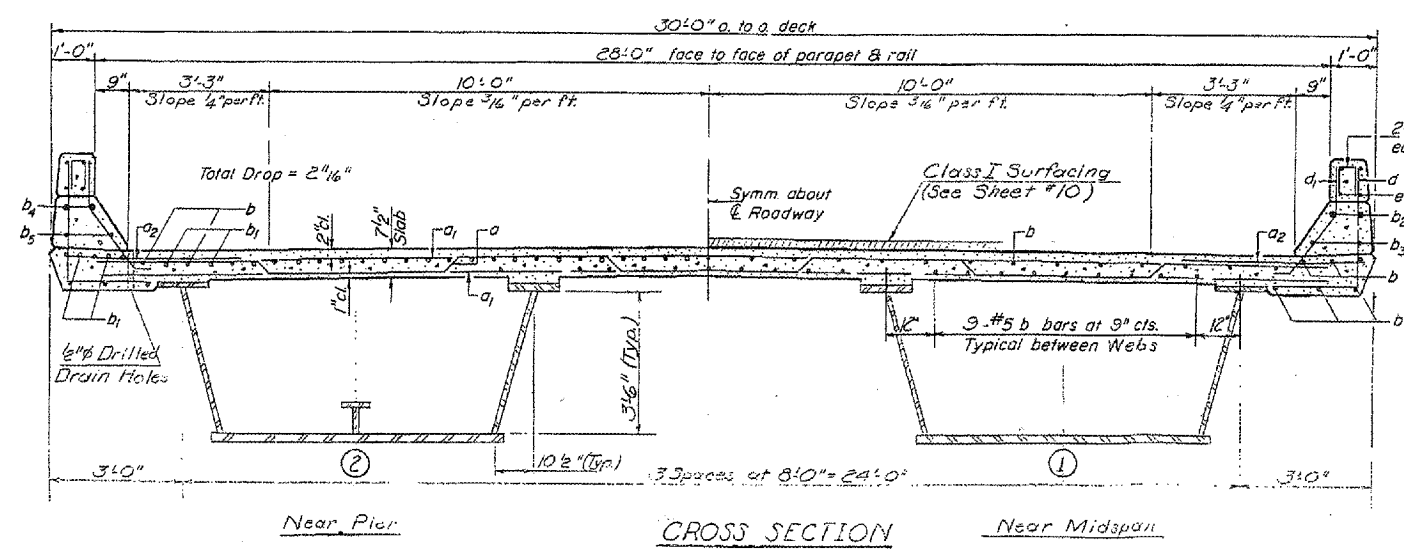


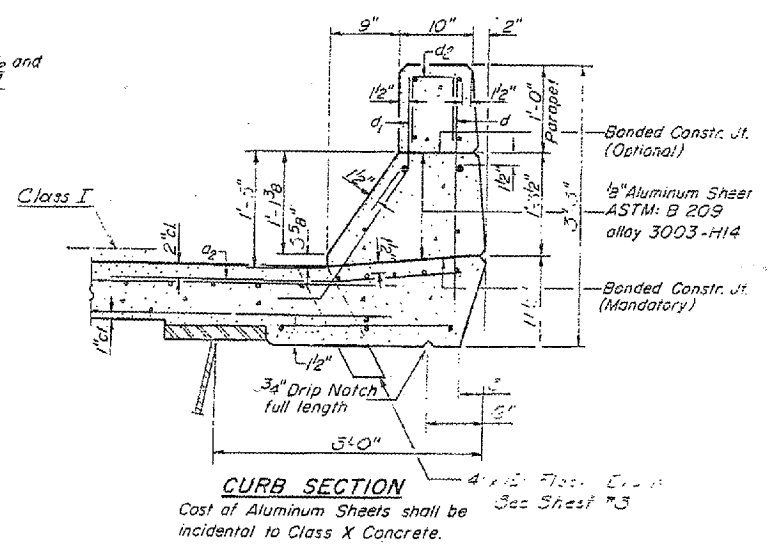
F.A.I. RTE.	SECTION	COUNTY	TOTAL SHEETS	SHEET NO.
55	5316HB-1.6B1BP	LIVINGSTON	15	10
ILLINOIS				



Notes: For Sec. A-A, See Sheet #3



NOTE: For placement of bars d₂ and e thru e₂ see sheet #4



REVISIONS	
NAME	DATE

ILLINOIS DEPARTMENT OF TRANSPORTATION

EXISTING STRUCTURE DETAILS

BRIDGE LOCATION NO. 1

FAI ROUTE 55 (I-55) SECTION 5316HB-1.6B1BP

LIVINGSTON COUNTY

SN 053-0122, SN 053-0124 (SB), SN 053-0125 (NB)

"FOR INFORMATION ONLY"

Date: 03/12/2007
project: ca: bridgepoint_07/053-0124 & 5.dgn