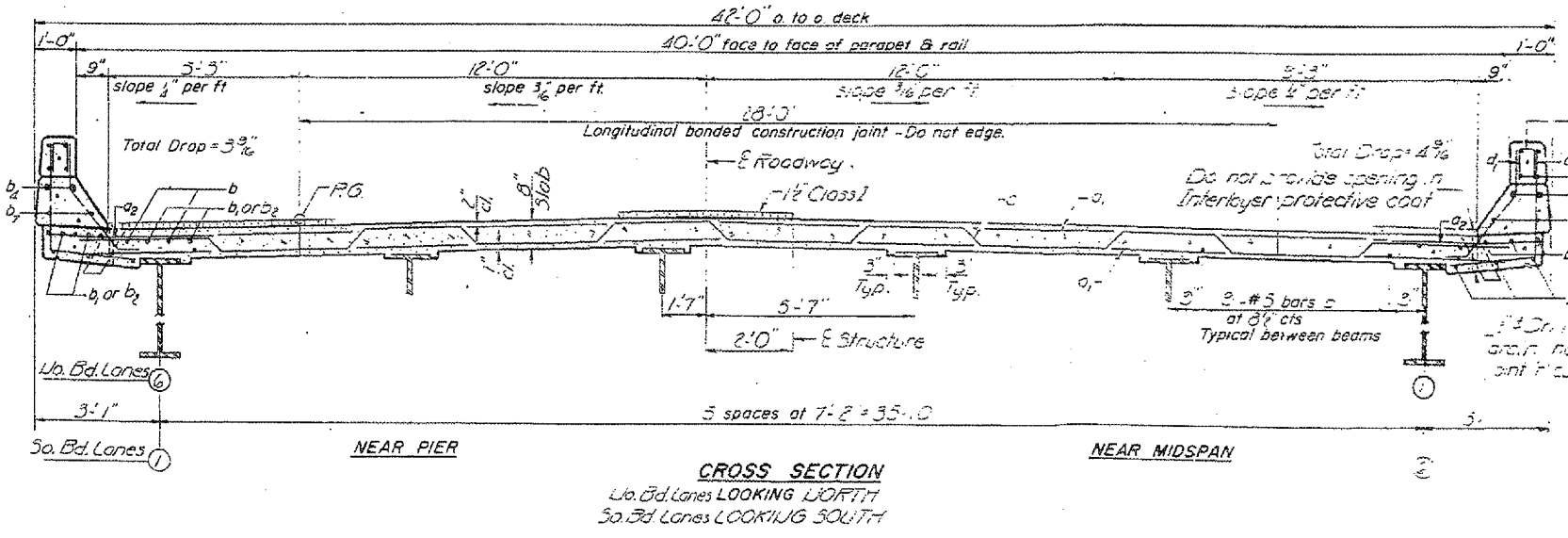
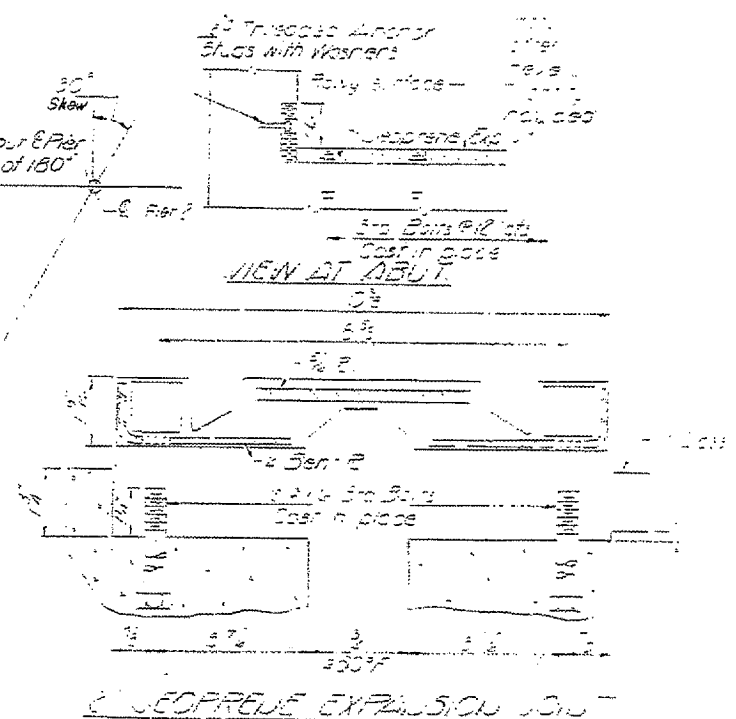
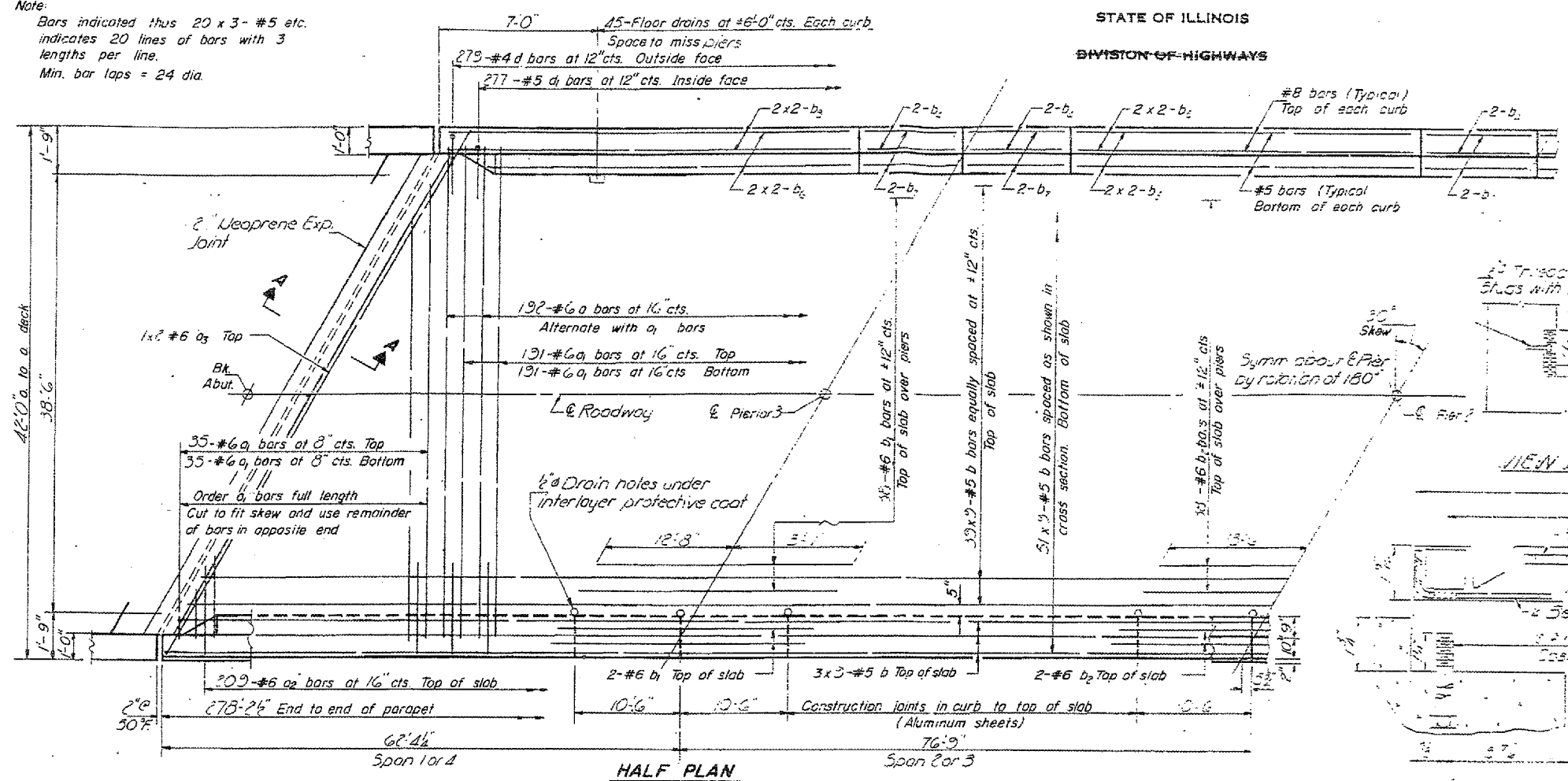


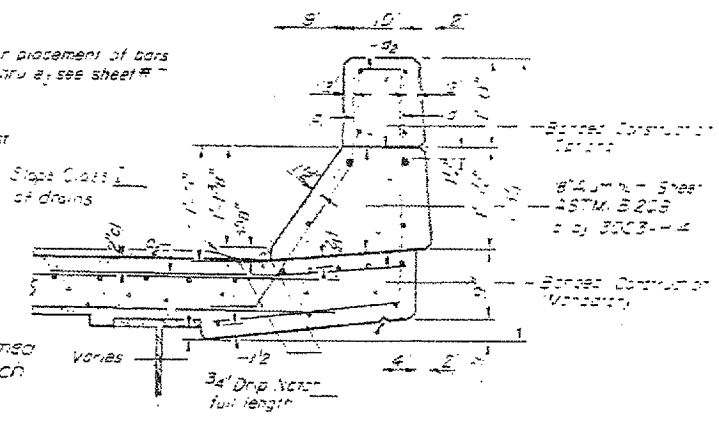
F.A.I. RTE.	SECTION	COUNTY	TOTAL SHEETS	SHEET NO.
55	53(6HB-1,6B)BP	LIVINGSTON	15	13

Note:

Bars indicated thus 20 x 3 - #5 etc. indicates 20 lines of bars with 3 lengths per line.
Min. bar laps = 24 dia.



Note: For placement of bars d_2 & e thru e_2 see sheet #



"FOR INFORMATION ONLY"

REVISIONS	
NAME	DATE

ILLINOIS DEPARTMENT OF TRANSPORTATION
EXISTING STRUCTURE DETAILS
BRIDGE LOCATION NO. 2 AND 3
 FAI ROUTE 55 (I-55) SECTION 53(6HB-1,6B)BP
 LIVINGSTON COUNTY
 SN 053-0122, SN 053-0124 (SB), SN 053-0125 (NB)

Date: 03/12/2007
 Project: ar/bridgepaint.07/053-0124 & 5.dgn