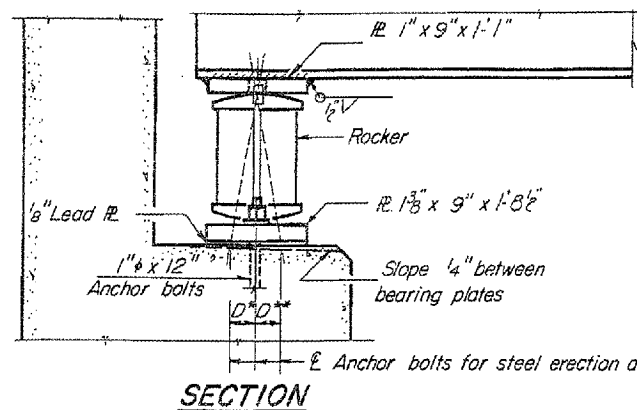
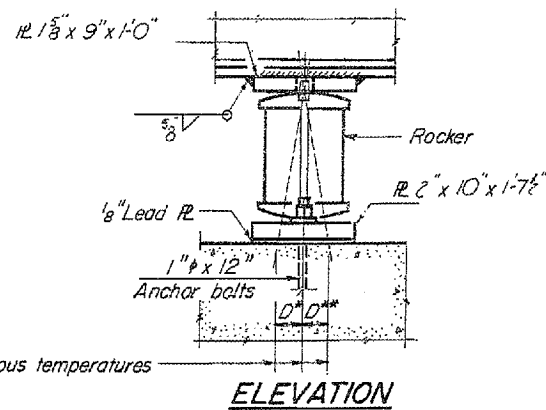


F.A.I. SHEET NO.	SECTION	COUNTY	TOTAL SHEETS	SHEET NO.
95	536HB-1.6B/BP	LIVINGSTON	15	15
ILLINOIS				

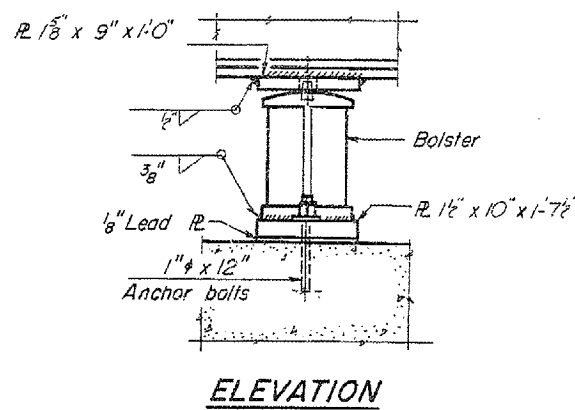
STATE OF ILLINOIS
DIVISION OF HIGHWAYS



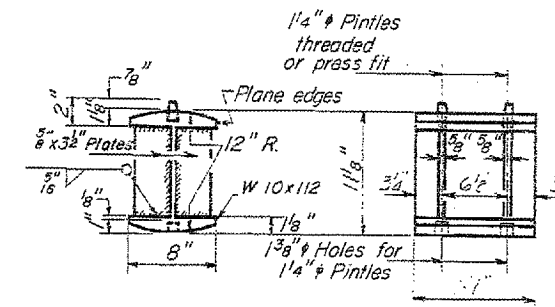
SECTION



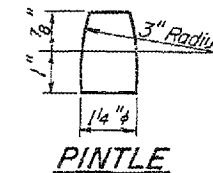
ELEVATION



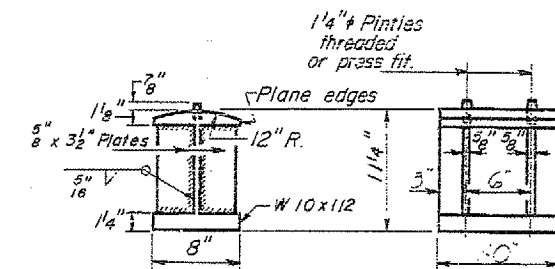
ELEVATION



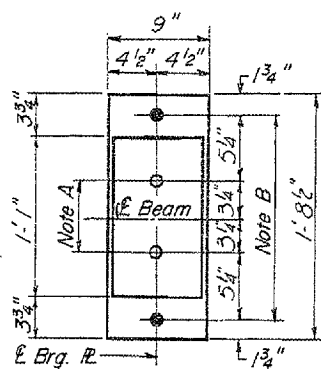
ROCKER AT ABUTTS.



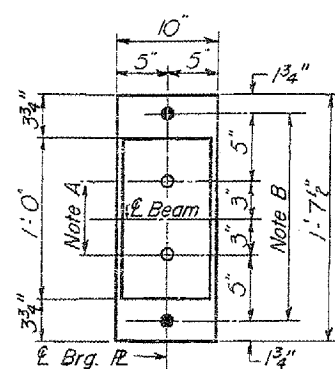
PINTLE



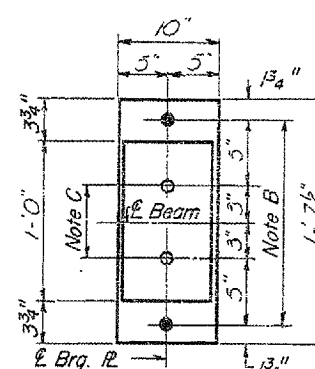
BOLSTER AT PIER 2



PLAN AT ABUTMENTS



PLAN AT PIERS 1 & 3



PLAN AT PIER 2

NOTE A
1 3/8" Holes - 1" deep in top R.
for pintles. Thread or press fit
pintles into bottom R.

NOTE B
1 1/2" Holes for 1" anchor bolts.
1 5/8 x 2 1/2 x 2 1/2" R. Washers
under nut.

NOTE C
1 3/8" Holes 1" deep in top R.
only for 1 1/4" pintles.

BEARING ASSEMBLY DETAILS

NOTES ON SETTING OF ANCHOR BOLTS AT EXP. BRGS.

- a) D* (Side of brg. away from fixed brg.)
D* = 1/8" per each 100' of expansion for every 15° fall below the normal temp. of 50°F
- D** (Side of brg. toward fixed brg.)
D** = 1/8" per each 100' of expansion for every 15° rise above the normal temp. of 50°F

- b) After beams have been erected and dimensions D* or D** determined, holes shall be drilled and anchor bolts shall be grouted in place. All fixed anchor bolts may be built into the masonry.

***TOP OF WF ELEVATIONS - NORTH BD. LINES**

	Bm. 1	Bm. 2	Bm. 3	Bm. 4	Bm. 5	Bm. 6
Exp. South Abut.	666.20	666.34	666.45	666.51	666.40	666.26
Exp. Pier 1	666.14	666.28	666.39	666.45	666.34	666.20
Exp. Splice #1	666.12	666.26	666.37	666.43	666.32	666.18
Exp. Pier 2	666.04	666.20	666.31	666.37	666.26	666.12
Exp. Splice #2	666.08	666.18	666.29	666.35	666.24	666.10
Exp. Pier 3	665.99	666.13	666.24	666.30	666.19	666.05
Exp. Splice #3	665.97	666.11	666.22	666.28	666.17	666.03
Exp. North Abut.	665.93	666.07	666.18	666.24	666.13	665.99

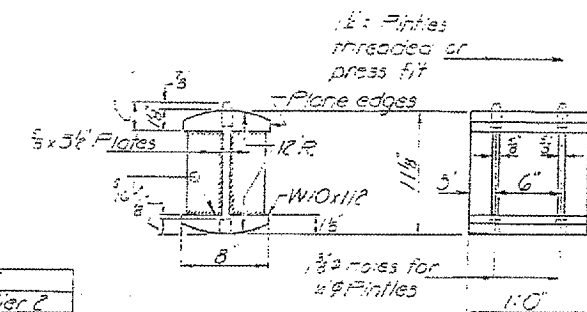
* For fabrication only

***TOP OF WF ELEVATIONS - SOUTH BD. LINES**

	Bm. 1	Bm. 2	Bm. 3	Bm. 4	Bm. 5	Bm. 6
Exp. South Abut.	666.21	666.34	666.45	666.51	666.26	666.11
Exp. Pier 1	666.15	666.28	666.39	666.45	666.20	666.05
Exp. Splice #1	666.13	666.26	666.37	666.43	666.18	666.03
Exp. Pier 2	666.07	666.20	666.31	666.37	666.12	665.97
Exp. Splice #2	666.05	666.18	666.29	666.35	666.10	665.95
Exp. Pier 3	666.00	666.13	666.24	666.30	666.05	665.90
Exp. Splice #3	665.98	666.11	666.22	666.28	666.03	665.88
Exp. North Abut.	665.94	666.07	666.18	666.24	665.99	665.84

	0.4 Sp. for 0.6 Sp. 4	Piers for 0.5 Sp. 2 or 3	Pier 2	
I (in ⁴)	9760.0	13395.8	9760.0	14371.0
E (in ²)	1.376	1.376	1.376	1.376
M _E (in ²)	343.34	638.74	306.47	714.68
M _E (in ²)	429.58	408.64	432.48	440.54
Imp. (in ²)	113.13	105.43	107.26	109.26
M _{TOTAL} (in ²)	888.05	1212.81	846.21	1264.48
R _T (ksi)	19.661	19.441	18.735	19.665

	Abut.	Pier 1 or 3	Pier 2
R _E (k)	30.88	106.23	106.02
R _E (k)	58.09	52.09	53.49
Imp. (k)	10.21	13.44	13.27
R _{TOTAL} (k)	79.18	171.76	172.78



ROCKER AT PIERS 1 & 3

"FOR INFORMATION ONLY"

REVISIONS	
NAME	DATE

ILLINOIS DEPARTMENT OF TRANSPORTATION
EXISTING STRUCTURE DETAILS
BRIDGE LOCATION NO. 2 AND 3
FAI ROUTE 55 (I-55) SECTION 53(6HB-1.6B)BP
LIVINGSTON COUNTY
SN 053-0122, SN 053-0124 (SB), SN 053-0125 (NB)