

F.A.I. RITE	SECTION	COUNTY	TOTAL SHEETS	SHEET NO.
F.A.I. D4 I-74	74 Landscaping 2007	PEORIA	21	1

**INDEX OF SHEETS:**

SHEET NO.	DESCRIPTION
1.	COVER SHEET AND INDEX OF SHEETS
2.	GENERAL NOTES, STANDARDS AND COMMITMENTS
3 - 6.	SUMMARY OF QUANTITIES
7.	SCHEDULE OF LANDSCAPE ITEMS
8.	TEMPORARY EROSION CONTROL NOTES AND SCHEDULES
9.	SCHEDULE OF QUANTITIES
10.	CALENDER OF CONSTRUCTION
11.	OVERALL SCHEMATIC PLAN
12.	LANDSCAPE LOCATION PLAN 1
13.	LANDSCAPE LOCATION PLAN 2
14.	LANDSCAPE - LAYOUT 1
15.	LANDSCAPE - LAYOUT 2
16.	LANDSCAPE - LAYOUT 3
17.	LANDSCAPE - LAYOUT 4
18.	LANDSCAPE - LAYOUT 5
19.	LANDSCAPE - LAYOUT 6
20.	PIPING FOR LANDSCAPE WATER SERVICE
21.	BACKFLOW PREVENTER ENCLOSURE DETAIL

**STATE OF ILLINOIS  
DEPARTMENT OF TRANSPORTATION  
DIVISION OF HIGHWAYS**

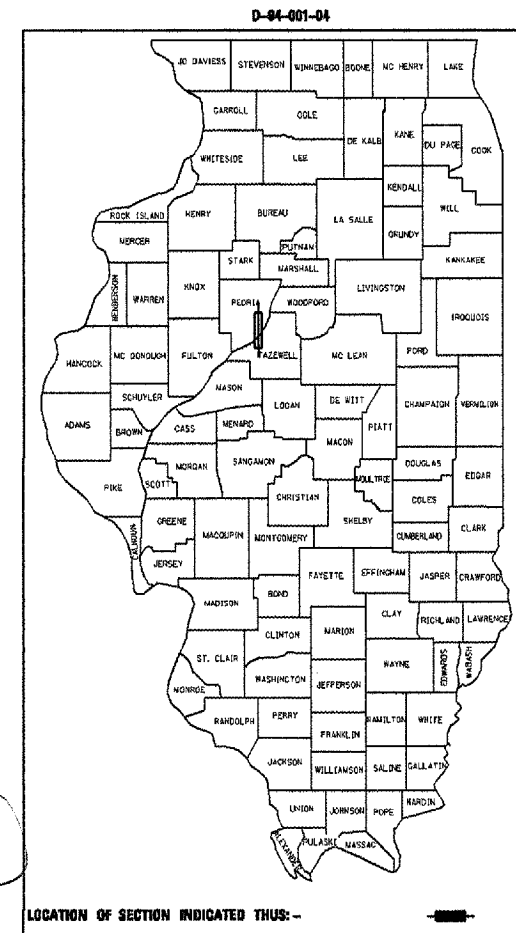
**PLANS FOR PROPOSED  
FEDERAL AID INTERSTATE**

**F.A.I. ROUTE 74 (I-74)  
SECTION D4 I-74 LANDSCAPING 2007**

**LANDSCAPING ALONG I-74 FROM ARMSTRONG AVENUE  
TO ILLINOIS RIVER IN PEORIA  
PEORIA COUNTY**

**C-94-001-04**

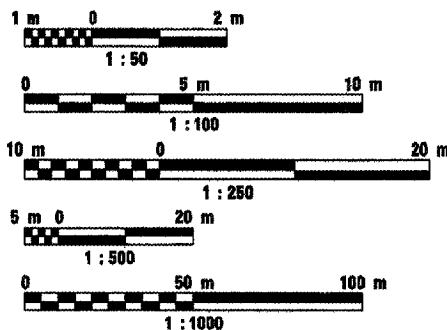
RANGE 8 EAST - 4TH P.M.



**LIST OF STANDARDS**

SEE SHEET NO. 2

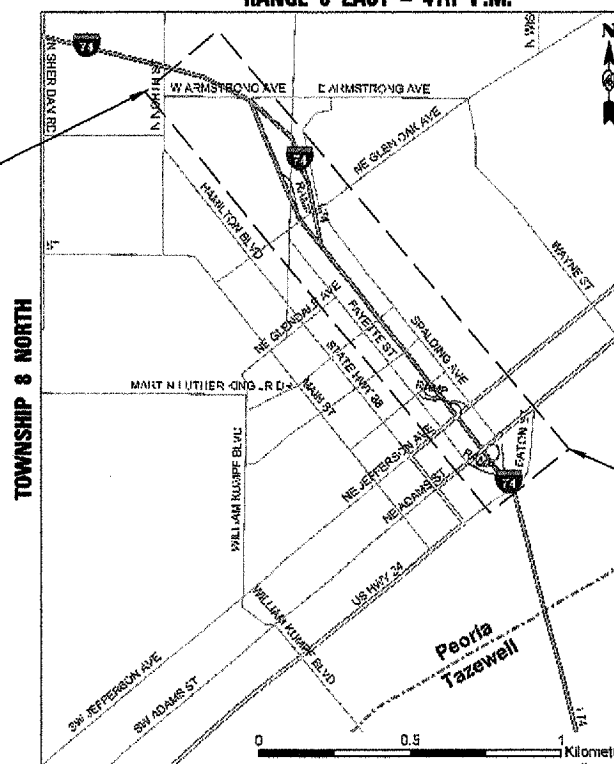
**METRIC RATIOS**



FULL SIZE PLANS HAVE BEEN PREPARED USING STANDARD ENGINEERING SCALES. REDUCED SIZED PLANS WILL NOT CONFORM TO STANDARD SCALES. IN MAKING MEASUREMENTS ON REDUCED PLANS, THE ABOVE SCALES MAY BE USED.

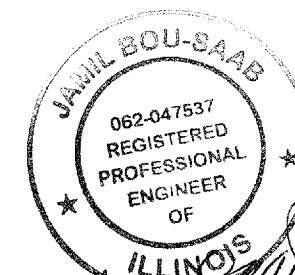
J.U.L.I.E.  
JOINT UTILITY LOCATION INFORMATION FOR EXCAVATION  
1-800-892-0123

**CONTRACT NO. 68367  
CATALOG NO. 031087-54D**



**LOCATION MAP**  
MAP SCALE : N.T.S.

GROSS LENGTH PROJECT = 2,250 m = 2.25 km  
NET LENGTH PROJECT = 2,140 m = 2.14 km



*Jamil Bou-Saab*  
3/19/07

PROJECT END  
STA. 150+400

**DESCRIPTION OF WORK**

THIS PROJECT INCLUDES INSTALLATION OF LANDSCAPING MATERIALS AND ALL OTHER COLLATERAL WORK.

STATE OF ILLINOIS  
DEPARTMENT OF TRANSPORTATION  
DIVISION OF HIGHWAYS

SUBMITTED March 20, 2007

*[Signature]*  
DEPUTY DIRECTOR OF HIGHWAYS, REGION ENGINEER

May 11, 2007  
*[Signature]*  
ENGINEER OF DESIGN AND ENVIRONMENT

May 11, 2007  
*[Signature]*  
DIRECTOR OF HIGHWAYS, CHIEF ENGINEER

**TERRA**  
ENGINEERING LTD.  
505 N. LaSalle Street, Suite 250  
Chicago, IL 60610  
(312) 467-8123

DATE: July 16th, 2004

PRINTED BY THE AUTHORITY OF THE STATE OF ILLINOIS  
TERRA ENGINEERING CONTACT: GEORGE GHAREEB PHONE #: 309-671-4214  
ALFRED BENESCH & CO. CONTACT: DAVID MORELL PHONE #: 312-565-0450

PROJECT ENGINEER: RICHARD DOTSON 309-671-3455  
CONSULTANT LIAISON ENGINEER: CHRISTOPHER MAUSHAARD 309-671-3464

F.A.I. RTE.	SECTION	COUNTY	TOTAL SHEETS	SHEET NO.
74	D4 1-74 Landscaping 2007	PEORIA	21	2
STA. _____		TO STA. _____		
FED. ROAD DIST. NO. 4		ILLINOIS	FED. AID PROJECT	

**GENERAL NOTES:**

1. MICROSTATION AND GEOPAK FILES OF THIS PROJECT WILL BE MADE AVAILABLE TO THE CONTRACTOR. IF THERE IS A CONFLICT BETWEEN THE ELECTRONIC FILES AND THE PRINTED CONTRACT PLANS AND DOCUMENTS, THE PRINTED CONTRACT PLANS AND DOCUMENTS SHALL TAKE PRECEDENCE OVER THE ELECTRONIC FILES. THE CONTRACTOR SHALL ACCEPT ALL RISK ASSOCIATED WITH USING THE ELECTRONIC FILES AND SHALL HOLD THE DEPARTMENT HARMLESS FOR ANY ERRORS OR OMISSIONS IN THE ELECTRONIC FILES AND THE DATA CONTAINED THEREIN. ERRORS OR DELAYS RESULTING FROM THE USE OF THE ELECTRONIC FILES BY THE CONTRACTOR SHALL NOT RESULT IN AN EXTENSION OF TIME FOR ANY INTERIM OR FINAL COMPLETION DATE OR SHALL NOT BE CONSIDERED CAUSE FOR ADDITIONAL COMPENSATION. THE CONTRACTOR SHALL NOT USE, SHARE, OR DISTRIBUTE THESE ELECTRONIC FILES EXCEPT FOR THE PURPOSE OF CONSTRUCTING THIS CONTRACT. ANY CLAIMS BY THIRD PARTIES DUE TO USE OR ERRORS SHALL BE THE SOLE RESPONSIBILITY OF THE CONTRACTOR. THE CONTRACTOR SHALL INCLUDE THIS DISCLAIMER WITH THE TRANSFER OF THESE ELECTRONIC FILES TO ANY OTHER PARTIES AND SHALL INCLUDE APPROPRIATE LANGUAGE BINDING THEM TO SIMILAR RESPONSIBILITIES.

**PROJECT SPECIFIC GENERAL NOTES:**

1. BEFORE STARTING ANY EXCAVATION, THE CONTRACTOR SHALL CALL "J.U.L.I.E.," AT 800-892-0123 FOR FIELD LOCATIONS OF BURIED ELECTRIC TELEPHONE AND GAS FACILITIES. (48 HOURS NOTIFICATION IS REQUIRED), REFER ART. 107.31 FOR UTILITIES PROPERTIES AND SERVICES
2. THE CONTRACTOR SHALL BE RESPONSIBLE TO VERIFY ALL DIMENSIONS AND CONDITIONS EXISTING IN THE FIELD PRIOR TO CONSTRUCTION AND ORDERING MATERIALS.
3. THE ACTUAL LOCATION OF PROPOSED LANDSCAPING SHALL BE ADJUSTED BY THE RESIDENT ENGINEER IN THE FIELD TO AVOID UTILITIES AND FIT FIELD CONDITIONS.
4. WHERE SECTION OR SUB-SECTION MONUMENTS ARE ENCOUNTERED, THE ENGINEER SHALL BE NOTIFIED BEFORE SUCH MONUMENTS ARE REMOVED. THE CONTRACTOR SHALL PROTECT AND CAREFULLY PRESERVE ALL PROPERTY MARKERS AND MONUMENTS UNTIL THE OWNER, AN AUTHORIZED SURVEYOR, OR AGENT HAS WITNESSED THEIR LOCATION.
5. ALL PLANS ARE IN SCALE, FOR CONSTRUCTION DIMENSIONS THE CONTRACTOR NEED TO VERIFY ON SITE.
6. REMOVAL OF UNDERBRUSH, DEBRIS OR OTHER MISCELLANEOUS ITEMS TO ALLOW THE PLACEMENT OF LANDSCAPING ITEMS SHALL BE INCLUDED IN THE PRICE OF THE ASSOCIATED PAY ITEMS.
7. THE CONTRACTOR SHALL USE CARE IN GRADING OR EXCAVATING NEAR ANY AND ALL EXISTING ITEMS WHICH WILL NOT BE REMOVED. ANY DAMAGE DONE TO EXISTING ITEMS BY THE CONTRACTOR SHALL BE REPAIRED BY THE CONTRACTOR AT THE CONTRACTOR'S OWN EXPENSE.
8. INTERSEEDING, CLASS 2A AND MULCH, METHOD 2 LOCATIONS WILL BE SELECTED BY THE RESIDENT ENGINEER BASED ON CONDITIONS OF EXISTING TURF.
9. CONTROL ALL INVASIVE WEED SPECIES FOUND IN THE CLASS 4A AND CLASS 5 SEEDING AREAS AS DIRECTED BY THE ENGINEER. THE CONTROL IN SUCH AREAS SHALL BE COMPLETED AT THE TIME OF THE PHASE I, II, III, AND IV COMPLETION DATES. IF NOT COMPLETED AT EACH COMPLETION DATE, THE COMPLETION OF THAT PHASE WILL NOT BE ACCEPTED AND WILL RESULT IN A "FAILURE TO COMPLETE LANDSCAPE CONSTRUCTION AND LANDSCAPE ESTABLISHMENT WORK" AND BE CHARGED ACCORDINGLY.

**COMMITMENTS:**

COMMITMENTS SHALL NOT BE ALTERED WIHTOUT WRITTEN APPROVAL OF ALL PARTIES TO WHICH THE COMMITMENT WAS MADE

NO COMMITMENTS HAVE BEEN INCURRED ON THIS PROJECT.

**STATUS OF UTILITIES:**

NO UTILITIES ARE TO BE RELOCATED FOT THIS PROJECT. THE CONTRACTOR SHALL CONTACT JULIE AND IDOT PRIOR TO ANY EXCAVATION.

ALL IDOT UTILITES WILL BE LOCATED BY "OTHERS".

**STANDARDS LIST:**

- 202001 EARTH MEDIAN DITCH CHECK
- 280001-03 TEMPORARY EROSION CONTROL SYSTEM
- 602401-01 MANHOLE TYPE A
- 202001 EARTH MEDIAN DITCH CHECK
- 604001-02 FRAME AND LIDS, TYPE 1
- 701106-01 OFF-ROAD OPERATIONS, MULTILANE, MORE THAN 4.5 m (15') AWAY, FOR SPEEDS > 45 MPH
- 701101-01 OFF-ROAD OPERATIONS, MULTILANE LESS THAN 4.5 m (15') AWAY FOR SPEEDS > 45 MPH
- 701201-02 LANE CLOSURE , 2L, 2W, DAY ONLY ON-ROAD TO 600mm OFF FOR SPEEDS > 45 MPH
- 701400-02 APPROACH TO LANE CLOSURE, FREEWAY/EXPRESSWAY
- 701406-04 LANE CLOSURE, MULTILANE, DAY OPERATIONS ONLY FOR SPEEDS > 45 MPH
- 701411-03 LANE CLOSURE, MULTILANE AT ENTRANCE OR EXIT RAMP FOR SPEEDS > 45 MPH
- 701426-02 LANE CLOSURE, MULTILANE, INTERMITTENT OR MOVING OPER. FOR SPEEDS > 45 MPH
- 701502-01 URBAN LANE CLOSURE 2L, 2W, WITH BIDIRECTIONAL LEFT TURN LANE
- 701601-04 URBAN LANE CLOSURE, MULTILANE 1W OR 2W WITH NONTRAVERSABLE MEDIAN
- 701602-02 URBAN LANE CLOSURE, MULTILANE 2W WITH BIDIRECTIONAL LEFT TURN LANE
- 701606-04 URBAN LANE CLOSURE, MULTILANE 2W WITH MOUNTABLE MEDIAN
- 702001-06 TRAFFIC CONTROL DEVICES



REVISIONS	
NAME	DATE
FINAL PLAN	05/11/04
PREFINAL PLAN	03/01/04
PRELIMINARY	11/17/03

ILLINOIS DEPARTMENT OF TRANSPORTATION  
 FAI ROUTE 74 ( I-74)  
 GENERAL NOTES,  
 STANDARDS AND  
 COMMITMENTS  
 DATE: 07/16/2004  
 DRAWN BY: KC/DL  
 CHECKED BY: JB

# SUMMARY OF QUANTITIES

P. A. I. DIST.	SECTION	COUNTY	POST MILES	SHEET NO.
74	*	PEORIA	21	3
STA.		TO STA.		
PUB. ROAD DIST. NO. 1		NAME	PUB. ROAD PROJECT	
* D4 1-74 Landscaping 2007				

SUMMARY OF QUANTITIES			TOTAL QUANTITIES	CONSTRUCTION TYPE CODE				
CODE NO	ITEM	UNIT		100% STATE Y003				
28000300	TEMPORARY DITCH CHECKS	EACH	35	35				
28000500	INLET AND PIPE PROTECTION	EACH	28	28				
67100100	MOBILIZATION	L SUM	1	1				
70101700	TRAFFIC CONTROL AND PROTECTION	L SUM	1	1				
A2000420	TREE, ACER NIGRUM (BLACK MAPLE), 2-1/2" CALIPER, BALLED AND BURLAPPED	EACH	14	14				
A2002612	TREE, CARYA CORDIFORMIS (BITTERNUT HICKORY), 1-1/2" CALIPER, BALLED AND BURLAPPED	EACH	12	12				
A2004424	TREE, GINKGO BILOBA (GINKGO), 3" CALIPER, BALLED AND BURLAPPED	EACH	16	16				
A2004820	TREE, GLEDITSIA TRIANCANTHOS INERMIS SKYLINE (SKYLINE THORNLESS COMMON HONEYLOCUST), 2-1/2" CALIPER, BALLED AND BURLAPPED	EACH	7	7				
A2005020	TREE, GYMNOCLADUS DIOICUS (KENTUCKY COFFEE TREE), 2-1/2" CALIPER, BALLED AND BURLAPPED	EACH	12	12				
A2006516	TREE, QUERCUS BICOLOR (SWAMP WHITE OAK), 2" CALIPER, BALLED AND BURLAPPED	EACH	55	55				
B2000666	TREE, AMELANCHIER X GRANDIFLORA (APPLE SERVICEBERRY), 6' HEIGHT, SHRUB FORM, BALLED AND BURLAPPED	EACH	27	27				
B2004166	TREE, MALUS PRAIRIFIRE (PRAIRIFIRE CRABAPPLE), 6' HEIGHT, CLUMP FORM, BALLED AND BURLAPPED	EACH	30	30				

# SUMMARY OF QUANTITIES

F. & L. NO.	SECTION	COUNTY	TOTAL SHEETS	SHEET NO.
74		PEORIA	21	4
STA.		TO STA.		
REL. AND REF. NO. 8		BLANKS	REL. AND PROJECT	
* D4 I-74 LANDSCAPING 2007				

SUMMARY OF QUANTITIES			TOTAL QUANTITIES	CONSTRUCTION TYPE CODE					
CODE NO	ITEM	UNIT		100% STATE Y003					
B2006068	TREE, SYRINGA PEKINENSIS (PEKIN LILAC), 7' HEIGHT, CLUMP FORM, BALLED AND BURLAP PED	EACH	27	27					
B2006268	TREE, SYRINGA RETICULATA (JAPANESE TREE LILAC), 7' HEIGHT, CLUMP FORM, BALLED AND BURLAPPED	EACH	22	22					
C2C003G3	SHRUB, AMOUPHA FRUITCOSA (INDIGO BUSH), CONTAINER GROWN, 3-GALLON	EACH	91	91					
C2C03036	SHRUB, FORSYTHIA NORTHERN SUN (NORTHERN SUN BORDER FORSYTHIA), 3' HEIGHT, CONTAINER	EACH	535	535					
C2C03424	SHRUB, HYDRANGEA ARBORESCENS ANNABELLE (ANNABELLE SMOOTH HYDRANGEA), 2' HEIGHT CONTAINER	EACH	252	252					
C2C05724	SHRUB, RHUS AROMATICA (FRAGRANT SUMAC), 2' WIDTH, CONTAINER	EACH	2553	2553					
C2C05936	SHRUB, RHUS GLABRA (SMOOTH SUMAC), 3' HEIGHT, CONTAINER	EACH	663	663					
C2C10924	SHRUB, SYRINGA MEYERI PALIBIN (DWARF KOREAN LILAC), 2' HEIGHT, CONTAINER	EACH	824	824					
C2003224	SHRUB, HAMAMELIS VERNALIS (VERNAL WITCHH AZEL), 2' HEIGHT, BALLED AND BURLAPPED	EACH	187	187					
C2007224	SHRUB, ROSA KNOCKOUT (KNOCKOUT ROSE), 24" HEIGHT, CONTAINER	EACH	1055	1055					
D2C00918	EVERGREEN, JUNIPERUS HORIZONTALIS HUGHES (HUGHES CREEPING JUNIPER), 18" WIDTH, CONTAINER	EACH	985	985					
D2002760	EVERGREEN, PINUS NIGRA (AUSTRALIAN PINE), 5' HEIGHT, BALLED AND BURLAPPED	EACH	71	71					

# SUMMARY OF QUANTITIES

P.A.L. NO.	SECTION	COUNTY	TOTAL SHEETS	SHEET NO.
74	*	PEORIA	21	5
STA.	TO STA.			
FED. ROAD DIST. NO. 5	BLANKS	FED. AID PROJECT		
* D4 1-74 LANDSCAPING 2007				

SUMMARY OF QUANTITIES			TOTAL QUANTITIES	CONSTRUCTION TYPE CODE				
CODE NO	ITEM	UNIT		100% STATE Y003				
E20010G1	VINE-CAMPSIS RADICAN (MINNESOTA TRUMPET VINE), 1-GALLON POT	EACH	37	37				
E20070G1	VINE-CLEMATIS MAXIMOWICZIANA (SWEET AUTUMN CLEMATIS), 1-GALLON POT	EACH	85	85				
E20200G1	VINE-PARTHENOCISSUS QUINQUEFOLIA (VIRGINIA CREEPER), 1-GALLON POT	EACH	303	303				
E20220G1	VINE-PARTHENOCISSUS TRICUSPIDATA (BOSTON IVY), 1-GALLON POT	EACH	72	72				
K0026700	TREE CARE	EACH	646	646				
K0026810	SHRUB CARE	EACH	25,018	25,018				
K0026820	VINE CARE	EACH	2120	2120				
K0030490	PERENNIAL PLANTS, FOR SUN, 1/2 GALLON CONTAINERS	UNIT	286.68	286.68				
AZ008920	TREE, ULMUS REGAL (REGAL ELM), 2-1/2" CALIPER, BALLED AND BURLAPPED	EACH	30	30				
E20156G1	VINE-LONICERA SAMPERVIRENS (HONEYSUCKLE), 1-GALLON POT	EACH	407	407				
C2C00524	SHRUB, ARONIA MELANOCARPA (BLACK CHOKEBERRY), 2' HEIGHT, CONTAINER	EACH	1,560	1,560				
C2C03936	SHRUB, ILEX VERTICILLATA (WINTER RED), 3' HEIGHT, CONTAINER	EACH	351	351				
C2016024	SHRUB, ROSA X CHUCKLES (CHUCKLES SHRUB ROSE), 24" HEIGHT, CONTAINER	EACH	850	850				
X0325777	BACKFLOW PREVENTER AND ENCLOSER	EACH	2	2				
MX032435	GRAVEL MULCH	M TON	35	35				

# SUMMARY OF QUANTITIES

F. & L. ATE.	SECTION	COUNTY	TOTAL SHEETS	SHEET NO.
74	0	PEORIA	21	6
STA.		TO STA.		
FDL ROAD DIST. NO. 8		SLIPNO.	FDL JOB PROJECT	
D4 I-74 LANDSCAPING 2007				

SUMMARY OF QUANTITIES			TOTAL QUANTITIES	CONSTRUCTION TYPE CODE					
CODE NO	ITEM	UNIT		100% STATE Y003					
MX032675	PERENNIAL PLANT CARE	SQ M	21306	21306					
MX032680	WEED CONTROL, PRE-EMERGENT GRANULAR HERBICIDE	KG	80	80					
M2011400	NITROGEN FERTILIZER NUTRIENT	KG	26	26					
M2011500	PHOSPHORUS FERTILIZER NUTRIENT	KG	16	16					
M2011600	POTASSIUM FERTILIZER NUTRIENT	KG	11	11					
M2500750	MOWING	HA	35	35					
M2503210	INTERSEEDING, CLASS 2A	HA	2	2					
M2503312	INTERSEEDING, CLASS 4A	HA	1.0	1.0					
M2503320	INTERSEEDING, CLASS 5	HA	0.5	0.5					
M2510115	MULCH, METHOD 2	HA	2	2					
M2520200	SUPPLEMENTAL WATERING	UNIT	1,367	1,367					
M2800400	PERIMETER EROSION BARRIER	METER	1632	1632					
XX003027	JUNIPERUS CHINENSIS "KALLAYS COMPACTA"	EACH	1,313	1,313					
XX005171	PEROVSKIA ATRIPLICIFOLIA "LONGIN" 1(GAL)	EACH	1290	1290					

SCHEDULE OF QUANTITIES:

F.A.I. RTE.	SECTION	COUNTY	TOTAL SHEETS	SHEET NO.
74	Landscaping 2007	PEORIA	21	7
STA.		TO STA.		
FED. ROAD DIST. NO. 4		ILLINOIS		FED. AID PROJECT

KEY	ITEM	COMMON NAME	SIZE	UNIT	TOTAL	LOCATION - LAYOUT/SHEET NUMBER									
						L1	L2	L3	L4	L5	L6				
	DECIDUOUS TREES														
CC	CARYA CORDIFORMIS	BITTERNUT HICKORY	1-1/2" CALIPER, BALLED AND BURLAPPED	EACH	12	4	0	0	8	0	0				
GD	GYMNOCLADUS DIOICUS	KENTUCKY COFFEETREE	2-1/2" CALIPER, BALLED AND BURLAPPED	EACH	12	0	0	0	12	0	0				
QA	QUERCUS BICOLOR	SWAMP WHITE OAK	2" CALIPER, BALLED AND BURLAPPED	EACH	55	6	15	8	2	1	23				
AN	ACER NIGRUM	BLACK MAPLE	2-1/2" CALIPER, BALLED AND BURLAPPED	EACH	14	5	8	0	0	1	0				
GB	GINKGO BILOBA	GINKGO	3" CALIPER, BALLED AND BURLAPPED	EACH	16	4	8	0	0	0	4				
GT	GLEDTISIA TRIACANTHOS INERMIS SKYLINE	SKYLINE THORNLESS HONEYLOCUST	2-1/2" CALIPER, BALLED AND BURLAPPED	EACH	7	0	0	2	0	5	0				
UR	ULMUS REGAL	REGAL ELM	2-1/2" CALIPER, BALLED AND BURLAPPED	EACH	30	0	14	0	0	0	16				
	ORNAMENTAL TREES														
AC	AMELANCHIER X GRANDIFLORA	APPLE SERVICEBERRY	6' HEIGHT, SHRUB FORM, BALLED AND BURLAPPED	EACH	27	0	5	6	6	1	9				
SA	SYRINGA RETICULATA	JAPANESE TREE LILAC	7' HEIGHT, CLUMP FORM, BALLED AND BURLAPPED	EACH	22	4	18	0	0	0	0				
SP	SYRINGA PEKINENSIS	PEKING LILAC	7' HEIGHT, CLUMP FORM, BALLED AND BURLAPPED	EACH	27	0	0	0	7	0	20				
MP	MALUS PRAIRIFIRE	PRAIRIFIRE CRABAPPLE	6' HEIGHT, CLUMP FORM, BALLED AND BURLAPPED	EACH	30	6	15	3	1	5	0				
	EVERGREEN TREES														
PN	PINUS NIGRA	AUSTRIAN PINE	5' BALLED AND BURLAPPED	EACH	71	28	15	6	13	3	6				
	SHRUBS														
AF	AMOUPHA FRUITCOSA	INDIGO BUSH	CONTAINER GROWN, 3-GALLON	EACH	91	0	62	0	0	29	0				
FS	FORSYTHIA NORTHERN SUN	NORTHERN SUN BORDER FORSYTHIA	3' HEIGHT, CONTAINER	EACH	535	0	90	0	0	190	255				
HV	HAMAMELIS VERNALIS	VERNAL WITCH HAZEL	2' HEIGHT, BALLED AND BURLAPPED	EACH	187	0	167	0	20	0	0				
HA	HYDRANGEA ARBORESCENS ANNABELLE	ANNABELLE SMOOTH HYDRANGEA	2' HEIGHT CONTAINER	EACH	252	0	0	235	17	0	0				
PA	PEROVSKIA ATRIPLICIFOLIA	RUSSIAN SAGE	PEROVSKIA ATRIPLICIFOLIA	EACH	1290	0	880	410	0	0	0				
RA	RHUS AROMATICA	FRAGRANT SUMAC	2' WIDTH, CONTAINER	EACH	2553	69	640	0	777	134	933				
RG	RHUS GLABRA	SMOOTH SUMAC	3' HEIGHT, CONTAINER	EACH	663	68	418	165	0	12	0				
SPA	SYRINGA MEYERI PALIBIN(DWARF KOREAN LILAC)	DWARF KOREAN LILAC	2' HEIGHT, CONTAINER	EACH	824	0	365	296	63	0	100				
RS	ARONIA MELANOCARPA	BLACK CHOKEBERRY	2' HEIGHT, CONTAINER	EACH	1560	320	725	455	24	36	0				
RH	ILEX VERTICILLATA	WINTER RED	3' HEIGHT, CONTAINER	EACH	351	0	0	100	0	89	162				
RR	ROSA KNOCKOUT	KNOCKOUT ROSE	24" HEIGHT, CONTAINER	EACH	1055	0	0	725	330	0	0				
RRC	ROSA X CHUCKLES	CHUCKLES SHRUB ROSE	24" HEIGHT, CONTAINER	EACH	850	0	220	0	0	0	630				
	EVERGREEN SHRUBS														
JH	JUNIPERUS HORIZONTALIS HUGHES	HUGHES CREEPING JUNIPER	18" WIDTH, CONTAINER	EACH	985	0	0	260	144	267	314				
JC	JUNIPERUS CHINENSIS	KALLAYS COMPACTA	18" WIDTH, CONTAINER	EACH	1313	0	647	345	122	117	82				
	VINES														
PQ	PARTHENOCISSUS QUINQUEFOLIA	VIRGINIA CREEPER	1-GALLON POT	EACH	303	52	65	0	56	74	56				
JT	PARTHENOCISSUS TRICUSPIDATA	BOSTON IVY	1-GALLON POT	EACH	72	48	0	0	0	24	0				
CT	CLEMATIS MAXIMOWICZIANA	SWEET AUTUMN CLEMATIS	1-GALLON POT	EACH	85	14	9	0	62	0	0				
CR	CAMPISIS RADICAN	MINNESOTA TRUMPET VINE	1-GALLON POT	EACH	37	0	0	0	21	16	0				
LS	LONICERA SEMPERVIRENS	HONEYSUCKLE	1-GALLON POT	EACH	407	8	26	0	0	338	35				
	PERENNIALS AND GROUNDCOVERS														
	PERENNIAL PLANTS, FOR SUN	PERENNIAL PLANTS, FOR SUN	1/2-GALLON POT, 12" O.C.	UNIT	286.68						0.00	0.09			
	INTERSEEDING, CLASS 4A			HA	0.92	0.05	0.60	0.14	0	0	0.13				
	INTERSEEDING, CLASS 5			HA	0.49	0.05	0.24	0.11	0	0	0.09				
	INTERSEEDING, CLASS 2A	(SEE NOTE 1)		HA	2.0	0	0	0	0	0	0				
	MOWING	11 APPLICATIONS		HA	35	4.04	12.72	4.39	4.09	2.35	7.27				
	MULCH, METHOD 2	(SEE NOTE 1)		HA	2.0	0	0	0	0	0	0				
	BACKFLOW PREVENTER AND ENCLOSURE			EACH	2			1			1				

LEGEND:

- L1 LANDSCAPE LAYOUT-1
- L2 LANDSCAPE LAYOUT-2
- L3 LANDSCAPE LAYOUT-3
- L4 LANDSCAPE LAYOUT-4
- L5 LANDSCAPE LAYOUT-5
- L6 LANDSCAPE LAYOUT-6

NOTE 1: INTERSEEDING, CLASS 2A AND MULCH, METHOD 2 LOCATIONS WILL BE SELECTED BY THE RESIDENT ENGINEER BASED ON CONDITIONS OF EXISTING TURF.



REVISIONS	
NAME	DATE
PS&E RJD	04/18/07
FINAL PLAN	05/11/04
PRELIMINARY PLAN	03/01/04
PRELIMINARY	11/17/03

ILLINOIS DEPARTMENT OF TRANSPORTATION  
FAI ROUTE 74 ( I-74)  
SCHEDULE OF  
LANDSCAPE ITEMS  
DRAWN BY: KC/DL  
CHECKED BY: JB  
DATE: 07/16/2004

# TEMPORARY EROSION CONTROL NOTES

- DURING LANDSCAPE CONSTRUCTION, AREAS OUTSIDE THE CONSTRUCTION SLOPE LIMITS, SHALL BE PROTECTED FROM DAMAGING EFFECTS OF CONSTRUCTION. THE CONTRACTOR SHALL NOT USE THIS AREA FOR STAGING, (EXCEPT AS DESIGNATED ON THE PLANS OR DIRECTED BY THE ENGINEER), PARKING OF VEHICLES OR CONSTRUCTION EQUIPMENT, STORAGE OF MATERIALS, OR OTHER CONSTRUCTION RELATED ACTIVITIES.
- WITHIN THE CONSTRUCTION ZONE, CRITICAL AREAS WHICH HAVE HIGH FLOWS OF WATER AS DETERMINED BY THE ENGINEER SHALL REMAIN UNDISTURBED UNTIL FULL SCALE CONSTRUCTION IS UNDERWAY TO PREVENT UNNECESSARY SOIL EROSION.
- EARTH STOCKPILES SHALL BE TEMPORARILY SEEDED IF THEY ARE TO REMAIN UNUSED FOR MORE THAN FOURTEEN DAYS.
- CONSTRUCTION EQUIPMENT SHALL BE STORED AND FUELED ONLY AT DESIGNATED LOCATIONS. ALL NECESSARY MEASURES SHALL BE TAKEN TO CONTAIN ANY FUEL OR POLLUTION RUN-OFF IN COMPLIANCE WITH EPA WATER QUALITY REGULATIONS. LEAKING EQUIPMENT OR SUPPLIES SHALL BE IMMEDIATELY REPAIRED OR REMOVED FROM THE SITE.
- THE RESIDENT ENGINEER SHALL INSPECT THE PROJECT ON A REGULAR BASIS TO DETERMINE THAT EROSION CONTROL EFFORTS ARE IN PLACE AND EFFECTIVE AND IF OTHER EROSION CONTROL WORK IS NECESSARY.
- SEDIMENT COLLECTED DURING CONSTRUCTION BY THE VARIOUS TEMPORARY EROSION CONTROL SYSTEM SHALL BE DISPOSED OFF FROM THE SITE ON A REGULAR BASIS AS DIRECTED BY THE ENGINEER. PERIMETER BARRIER SHALL HAVE SEDIMENT REMOVED WHEN IT REACHES 50% OF THE HEIGHT OF THE CONTROL DEVICE. THE COST OF MAINTAINING AND CLEANING THE EROSION AND SEDIMENT CONTROL ITEMS SHALL BE INCLUDED IN THE RESPECTIVE PAY ITEMS. NO ADDITIONAL COMPENSATION WILL BE ALLOWED.
- TEMPORARY EROSION CONTROL SYSTEMS SHALL BE REMOVED AS DIRECTED BY THE ENGINEER AFTER EVERY USE IF NO LONGER NEEDED OR NO LONGER FUNCTIONING. THE COST OF THIS REMOVAL SHALL BE INCLUDED IN THE UNIT BID PRICE FOR THE TEMPORARY EROSION CONTROL SYSTEM. NO ADDITIONAL COMPENSATION WILL BE ALLOWED.
- PLACEMENT AND MAINTENANCE OF TEMPORARY EROSION CONTROL SYSTEMS WILL BE UTILIZED USING PERIMETER EROSION BARRIER THROUGHOUT THE LANDSCAPE WORK ZONE AS SOON AS POSSIBLE TO STABILIZE EXPOSED SOILS, AS APPROVED, BY THE ENGINEER.
- EROSION CONTROL DEVICES SHALL BE IN PLACE AND APPROVED BY THE ENGINEER AS TO PROPER PLACEMENT AND INSTALLATION PRIOR TO BEGINNING OTHER WORK AT EACH SITE.
- THIS WORK SHALL BE COMPLETED IN ACCORDANCE WITH SECTION 280, TEMPORARY EROSION CONTROL, OF THE STANDARD SPECIFICATIONS.
- THE CONTRACTOR SHALL PERFORM ALL WORK AS DIRECTED BY THE ENGINEER AND AS SHOWN IN STANDARDS 280001.
- TEMPORARY EROSION CONTROL SYSTEMS ARE NOTED IN THE TEMPORARY EROSION CONTROL SCHEDULES. THE SCHEDULE MAY INCLUDE THE FOLLOWING:  
 TEMPORARY DITCH CHECKS  
 INLET AND PIPE PROTECTION  
 PERIMETER EROSION BARRIER

**PRIOR TO CONSTRUCTION:**

- PRIOR TO PERFORMING LANDSCAPE ACTIVITIES RESULTING IN LAND DISTURBANCE, THE CONTRACTOR SHALL INSTALL ITEMS INTENDED TO PREVENT SEDIMENT FROM LEAVING THE CONSTRUCTION SITE. THE ITEMS MAY INCLUDE THE FOLLOWING TEMPORARY EROSION CONTROL SYSTEMS:  
 TEMPORARY DITCH CHECKS  
 INLET AND PIPE PROTECTION  
 PERIMETER EROSION BARRIER

**DURING CONSTRUCTION:**

- DURING CONSTRUCTION THE CONTRACTOR SHALL:
- CLEAN UP AND GRADE THE WORK AREA TO ELIMINATE CONCENTRATION OF RUNOFF.
- INSTALL TEMPORARY DITCH CHECKS AT LOCATIONS SPECIFIED IN THE SCHEDULES OR AS DIRECTED BY THE RESIDENT ENGINEER.
- INSTALL INLET PROTECTION AS SPECIFIED IN THE SCHEDULES OR AS DIRECTED BY THE RESIDENT ENGINEER FOR STORM SEWERS OR CULVERTS AS THEY ARE INSTALLED AND AS WORK PROCEEDS.
- COVER THE OPEN ENDS OF PIPES IN TRENCHES AT THE CLOSE OF EACH WORKING DAY.
- MAINTAIN OR REPLACE (IF SPECIFIED BY THE RESIDENT ENGINEER) EROSION CONTROL ITEMS.

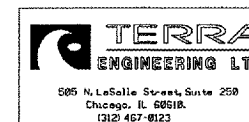
PERIMETER EROSION BARRIER		
LOCATION	PERIMETER EROSION BARRIER	METER
<b>E.B. I-74</b>		
RT 28.28 m STA 149+475.00 TO RT 15.74 m STA 149+775.00		300
RT 20.81 m STA 149+925.00 TO RT 23.93 m STA 150+000.00		75
	SUBTOTAL	375
<b>W.B. I-74</b>		
LT 26.85 m STA 149+925.00 TO LT 20.19 m STA 150+000.00		75
LT 48.87 m STA 150+100.00 TO LT 26.37 m STA 150+205.56		106
	SUBTOTAL	181
<b>RAMP F-3</b>		
LT 5.67 m STA 10+025.00 TO LT 4.9 m STA 10+137.31		112
	SUBTOTAL	112
<b>RAMP F-4</b>		
RT 5.14 m STA 10+200.51 TO RT 11.12 m STA 10+415.00		214
	SUBTOTAL	214
<b>RAMP F-6</b>		
RT 4.875 m STA 20+025.00 TO RT 4.1 m STA 20+041.42		16
LT 7.6 m STA 20+050.00 TO LT 7.6 m STA 20+125.00		75
RT 5 m STA 20+275.00 TO RT 5 m STA 20+395.07		120
	SUBTOTAL	211
<b>N.B. KNOXVILLE AVENUE</b>		
LT STA. 20+583.030 TO LT STA. 20+650.000		254
RT 8.096 m STA 20+350.00 TO RT 10.54 m STA 20+600.00		250
RT STA. 20+615.717 TO RT STA. 20+650.000		35
	SUBTOTAL	539
	<b>GRAND TOTAL</b>	<b>1632</b>

INLET AND PIPE PROTECTION			
LOCATION	EACH		
<b>E.B. I-74</b>			
STA. 149+089.001 14.466 m RT	1		
STA. 148+148.787 19.670 m RT	1		
STA. 148+218.682 23.481 m RT	1		
STA. 148+249.210 29.738 m RT	1		
STA. 148+496.009 19.147 m RT	1		
STA. 148+575.282 23.260 m RT	1		
STA. 148+932.995 14.896 m RT	1		
STA. 150+166.430 30.240 m RT.	1		
	SUBTOTAL	8	
<b>W.B. I-74</b>			
STA. 148+941.731 14.017 m LT	1		
STA. 149+073.664 16.082 m LT	1		
STA. 149+150.000 15.155 m LT	1		
STA. 149+171.491 14.685 m LT	1		
STA. 150+307.128 15.114 m LT.	1		
STA. 150+321.791 15.644 m LT.	1		
	SUBTOTAL	6	
<b>RAMP E-2</b>			
STA. 20+026.086 53.625 m LT	1		
STA. 20+068.035 19.399 m LT	1		
STA. 20+274.989 6.639 m LT	1		
STA. 20+323.000 6.691 m LT	1		
STA. 20+336.298 RT	1		
	SUBTOTAL	5	
<b>RAMP F-1</b>			
STA. 10+228.929 8.795 m RT	1		
STA. 10+294.964 9.792 m LT	1		
STA. 10+321.505 LT	1		
STA. 10+440.223 8.814 m LT	1		
	SUBTOTAL	4	
<b>RAMP G-1</b>			
STA. 10+357.083 7.900 m LT.	1		
STA. 10+387.625 11.199 m LT.	1		
STA. 10+423.987 7.899 m LT.	1		
STA. 10+436.906 10.434 m LT.	1		
	SUBTOTAL	4	
<b>S.B. KNOXVILLE AVENUE</b>			
STA. 1+156.854 15.408 m LT	1		
	SUBTOTAL	1	
	<b>GRAND TOTAL</b>	<b>28</b>	

F.A.I. DIST.	SECTION	COUNTY	TOTAL SHEETS	SHEET NO.
74	Landscaping 2007	PEORIA	21	8
STA. TO STA.		FED. ROAD DIST. NO. 4 ILLINOIS FED. AID PROJECT		

TEMPORARY DITCH CHECKS				
LOCATION	EACH			
<b>E.B. I-74</b>				
STA. 150+110.423 14.42 m RT.	1			
STA. 150+119.262 16.11 m RT.	1			
STA. 150+128.101 17.81 m RT.	1			
STA. 150+136.731 20.36 m RT.	1			
STA. 150+145.361 22.91 m RT.	1			
STA. 150+153.843 25.92 m RT.	1			
STA. 150+162.325 28.93 m RT.	1			
STA. 150+168.225 27.30 m RT.	1			
STA. 150+169.927 24.78 m RT.	1			
STA. 150+171.616 22.26 m RT.	1			
STA. 150+174.306 20.76 m RT.	1			
STA. 150+180.863 18.45 m RT.	1			
STA. 150+195.893 15.14 m RT.	1			
	SUBTOTAL	13		
<b>W.B. I-74</b>				
STA. 148+893.105 13.34 m LT	1			
STA. 148+906.474 13.34 m LT	1			
STA. 148+918.762 14.14 m LT	1			
STA. 148+931.668 14.45 m LT	1			
STA. 150+305.663 14.42 m LT.	1			
STA. 150+331.085 15.70 m LT.	1			
STA. 150+345.722 15.22 m LT.	1			
	SUBTOTAL	7		
<b>RAMP E-2</b>				
STA 20+040.000 21.55 m LT	1			
STA 20+060.000 21.55 m LT	1			
STA 20+083.000 17.79 m LT	1			
STA 20+106.000 15.32 m LT	1			
STA 20+129.000 12.83 m LT	1			
STA 20+152.000 11.91 m LT	1			
	SUBTOTAL	6		
<b>S.B. KNOXVILLE AVENUE</b>				
STA. 1+165.196 11.82 m LT	1			
STA. 1+174.090 9.739 m LT	1			
	SUBTOTAL	2		
<b>RAMP G-1</b>				
STA. 10+344.032 20.90 m LT.	1			
STA. 10+350.319 17.80 m LT.	1			
STA. 10+355.966 14.87 m LT.	1			
STA. 10+359.301 10.10 m LT.	1			
STA. 10+368.384 10.90 m LT.	1			
STA. 10+457.855 10.57 m LT.	1			
STA. 10+472.275 17.16 m LT.	1			
	SUBTOTAL	7		
	<b>GRAND TOTAL</b>	<b>35</b>		

REVISIONS	
NAME	DATE
FINAL PLAN	05/11/04
PRELIMINARY PLAN	03/01/04
PRELIMINARY	11/17/03



ILLINOIS DEPARTMENT OF TRANSPORTATION  
 FAI ROUTE 74 ( I-74)  
**TEMPORARY EROSION CONTROL NOTES AND SCHEDULES**  
 DATE: 07/16/2004  
 DRAWN BY: KC/DL  
 CHECKED BY: JB



F.A.I. RTE.	SECTION	COUNTY	TOTAL SHEETS	SHEET NO.
FAI 04 I-74		PEORIA	21	9
74 Landscaping 2007				
STA.		TO STA.		
FED. ROAD DIST. NO. 4		ILLINOIS		FED. AID PROJECT

GRAVEL MULCH		
Location	Depth	M. Ton
Ramp E-1		
Lt. Sta. 20+475 to 20+570	150 mm	35

MOBILIZATION	
Jobsite	1 Lump Sum

TRAFFIC CONTROL AND PROTECTION	
Jobsite	1 Lump Sum

SUPPLEMENTAL WATERING				
Location	No. of Plants	Rate liters/plant	No. of Waterings	Units
Trees	323	38	5	61.37
Shrubs	12509	11	5	687.995
Perennials	2663 SQM	15 L/SQM	14	559.23
Vines	1060	11	5	58.3
			Total	1,367

CARE OF PLANT MATERIALS			
Location	No. of Plants	No. of Care Cycles	Each
Tree Care	323	2	646
Shrub Care	12509	2	25018
Vine Care	1060	2	2120
Perennial Plant Care	2663 SQM	8	21306 SQM

Note: Perennial Plant Care will be measured by SQM.

WEED CONTROL, PRE-EMERGENT GRANULAR HERBICIDE				
Location	Appl. Rate (kg/SQM)	Area (SQ M)	No. of Appl.	Kilograms
Perennial Plant Beds	0.01	2663.3	3	80

FERTILIZER NUTRIENTS				
Location	Appl. Rate (kg/SQM)	Area (SQ M)	No. of Appl.	Kilograms
Perennial Plant Beds				
Nitrogen Fert. Nutr.	0.01	2663.3	1	27
Phosphorus Fert. Nutr.	0.006	2663.3	1	16
Potassium Fert. Nutr.	0.004	2663.3	1	11

PERENNIAL PLANTS, FOR SUN, 1/2 Gallon					
Forbs	Totals By Layout Sheet				Totals by
	Sheet 1	Sheet 2	Sheet 3	Sheet 6	Plant Name
Aster Laevis - Smooth Aster	0	0	0	700	700
Aster Novae angliae - New England Aster	0	0	670	600	1270
Baptisia Leucantha - White Indigo	0	400	570	350	1320
Echinacea Purpurea - Purple Coneflower	875		1330	1000	3205
Eupatorium Purpureum - Joe Pye Weed	500	570	0	0	1070
Helianthus Strumosus - Woodland Sunflower	0	0	1200	900	2100
Monarda Fistulosa - Wild Bergamont	0	0	750	350	1100
Physostegia Virginiana - Obedient Plant	0	570	0	330	900
Rudbeckia Goldstrum - Goldstrum Brown Eyed Susan	303	993	0	600	1896
Silphium Integrefolium - Rosin Weed	875	0	1140	500	2515
Silphium Laciniatum - Compass Plant		992	1200	0	2192
Silphium Terebinthinaceum - Prairie Dock	300	820	745	1500	3365
Solidago Speciosa - Showy Goldenrod	0	0	0	380	380
Vernonia Fasticulata - Ironweed	300	0	0	485	785
Veronicastrum Virginicum - Culvers Root	200	0	0	480	680
<b>Grasses</b>					
Andropogon Scoparius - Little Bluestem	0	0	1210	1030	2240
Sorghastrum Nutans - Indiangrass	0	400	260	0	660
Sporobolus Heterolepsis - Dropseed	0	720	1570	0	2290
Sub Total	3353	5465	10645	9205	
Grand Total	28668 = 286.68 UNITS				

NOTE: PERENNIAL PLANTS TO BE PLANTED IN LARGE GROUPINGS. LAYOUT TO BE DETERMINED BY LANDSCAPE ARCHITECT PRIOR TO PLANTING.



REVISIONS	
NAME	DATE
PS&E RJD	04/18/07
FINAL PLAN	05/11/04
PREFINAL PLAN	03/01/04
PRELIMINARY	11/17/03

ILLINOIS DEPARTMENT OF TRANSPORTATION  
FAI ROUTE 74 ( I-74)

SCHEDULE OF QUANTITIES

DATE: 07/16/2004

DRAWN BY: KC/DL  
CHECKED BY: JB

CALENDER OF CONSTRUCTION:

F.A.I. RTE.	SECTION	COUNTY	TOTAL SHEETS	SHEET NO.
74	Landscaping 2007	PEORIA	21	10
STA. _____		TO STA. _____		
FED. ROAD DIST. NO. 4		ILLINOIS	FED. AID PROJECT	

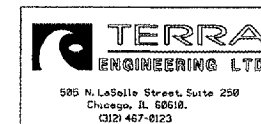
	YEAR	WORK DATES		CONSTRUCTION WORK	ESTABLISHMENT WORK	
		FROM	TO			
Phase I	2007	1-Aug	1-Nov	Class 2A Interseeding		
	2007	15-Aug	15-Sept	Planting of Perennial Plants. See Art. 254.09 for period of establishment for perennial plants.		
		15-Aug	15-Oct	Install evergreens		
	2007	15-Oct	1-Dec	Class 4A and 5 Seeding		
	2007	1-Nov	Frozen soil	Install fall woody plants		
	2008	15-Apr	1-May		Mow turf areas to a turf height of 3 inches	
	2008	1-Apr	15-June	Class 2A Interseeding		
	2008	Thawed soil	30-Apr	Finish installing evergreens		
	2008	Thawed soil	31-May	Finish installation of all woody plants		
	2008	1-May	30-May	Period of establishment plant care required for woody plants (weeding, watering or other work) which is necessary to maintain health and satisfactory appearance of the planting is included in the cost of the contract as per Article 253.14 and 253.15.		
	2008	1-May	15-June	Finish planting of Perennial Plants. See Article 254.09 for period of establishment.		
		15-May	30-June	Class 4A and 5 Seeding		
	2008	1-June		Certification to the bureau of operations that all woody plants have been installed and are in a live healthy condition and eligible for a Sept. 2008 period of establishment inspection.		
		1-Jun	15-Jun		Mow turf areas to a turf height of 3 inches	
2008	1-Jun	30-Jun	Period of establishment plant care required for woody plants (weeding, watering or other work) which is necessary to maintain healthy and satisfactory appearance of the planting is included in the cost of the contract as per sect. 253.14 & 253.15.			
	Phase II					
Phase II	2008	1-Jul	15-Jul		Mow turf areas to a turf height of 3 inches	
		1-Jul	31-Jul	Period of establishment plant care required for woody plants (weeding, watering or other work) which is necessary to maintain healthy and satisfactory appearance of the planting is included in the cost of the contract.		
		1-July	30-Sept		Perennial plant care every 30 days (3 cycles)	
		1-July	30-Oct		Perennial plant supplemental watering every 30 days (4 cycles)	
		1-Aug	15-Aug		Mow turf areas to a turf height of 3 inches	
		1-Aug	31-Aug	Period of establishment plant care required for woody plants (weeding, watering or other work) which is necessary to maintain health and satisfactory appearance of the planting is included in the cost of the contract.		
		1-Sep	30-Sep	Period of establishment plant care required for woody plants (weeding, watering or other work) which is necessary to maintain health and satisfactory appearance of the planting is included in the cost of the contract.		
		1-Sept	30-Sep	Period of establishment inspection will be performed by IDOT.		
Phase III	2009	1-Oct	15-Oct		Mow turf areas to a turf height of 3 inches	
		Phase III				
		Thawed soil	15-May	Installation of all required replacement woody plants, and all required clean up of Woody plants shall be completed by this date.		
		1-May	15-May		Mow turf areas to a turf height of 3 inches	
		1-May	30-Sep		Perennial plant care every 30 days (5 cycles)	
		1-May	30-May		Supplemental watering of woody plants and perennial plants unless deleted by the Engineer.	
		1-Jun	15-Jun		Mow turf areas to a turf height of 3 inches	
		1-Jun	30-Jun		Supplemental watering of woody plants and perennial plants unless deleted by the Engineer.	
		1-Jul	15-Jul		Mow turf areas to a turf height of 3 inches	
		1-Jul	17-Jul		Inspection date for all woody plant care.	
2009	1-Jun	30-Jun		(Woody plant care work cycle must be complete and acceptable on the inspection date.)		
	1-Jul	31-Jul		Supplemental watering of woody plants and perennial plants unless deleted by the Engineer.		
Phase IV		1-Aug	15-Aug		Mow turf areas to a turf height of 3 inches	
		1-Aug	31-Aug		Supplemental watering of woody plants and perennial plants unless deleted by the Engineer.	
		1-Sep	15-Sep		Mow turf areas to a turf height of 3 inches	
			18-Sep		(Woody plant care work cycle must be complete and acceptable on the inspection date.)	
		1-Sep	30-Sep		Supplemental watering of woody plants and perennial plants unless deleted by the Engineer.	
		1-Oct	15-Oct		Mow turf areas to a turf height of 3 inches	

REVISIONS	
NAME	DATE
PS&E RJD	04/18/07
FINAL PLAN	05/11/04
PRELIMINARY PLAN	03/01/04
PRELIMINARY	11/17/03

ILLINOIS DEPARTMENT OF TRANSPORTATION  
FAI ROUTE 74 (I-74)

CALENDER OF CONSTRUCTION

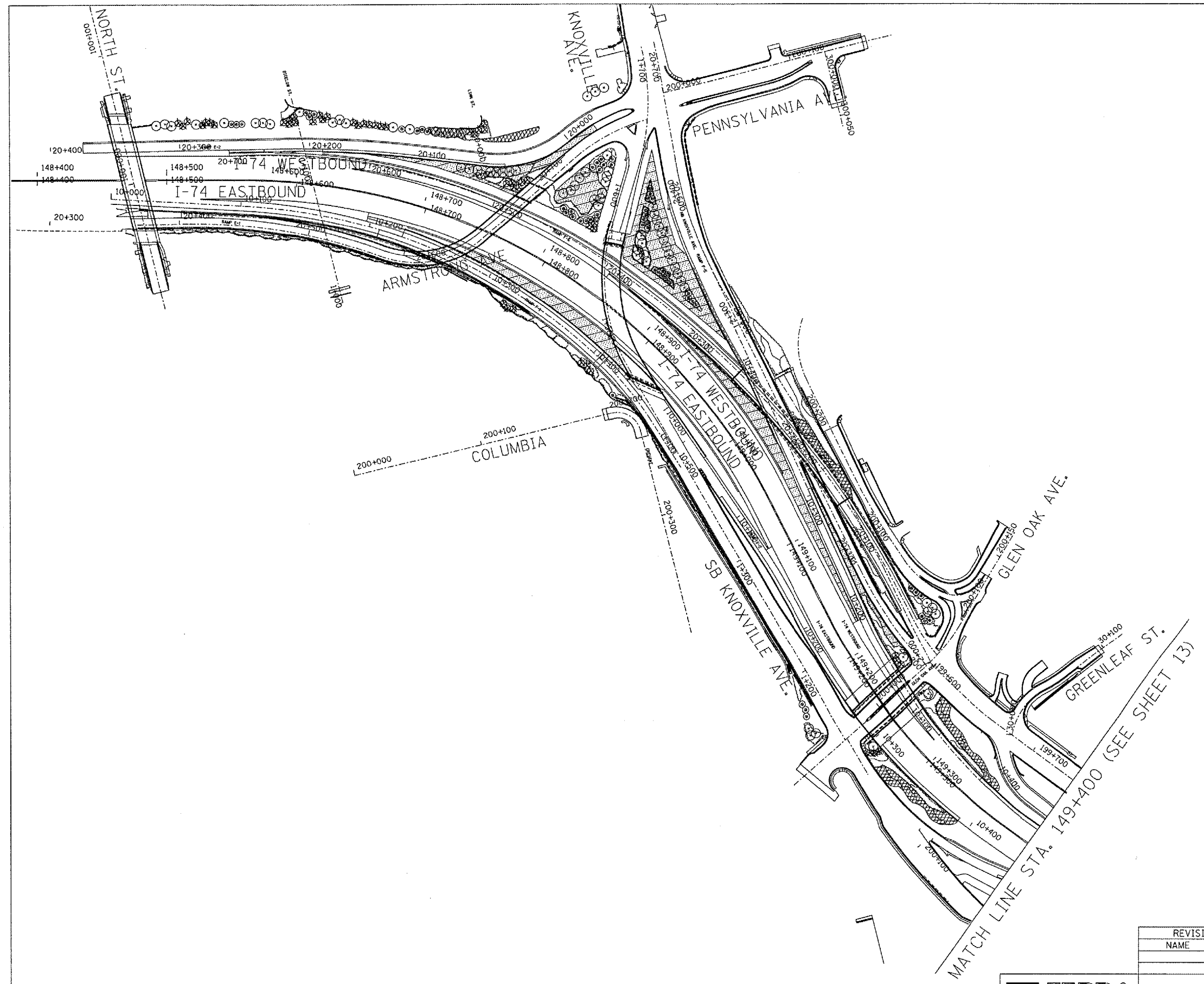
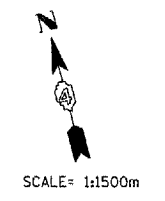
DRAWN BY: KC/DL  
CHECKED BY: JB



DATE: #DATE#



F.A.I. RTE.	SECTION	COUNTY	TOTAL SHEETS	SHEET NO.
74	I-74	PEORIA	21	12
STA. _____		TO STA. _____		
FED. ROAD DIST. NO. 4	ILLINOIS	FED. AID PROJECT		



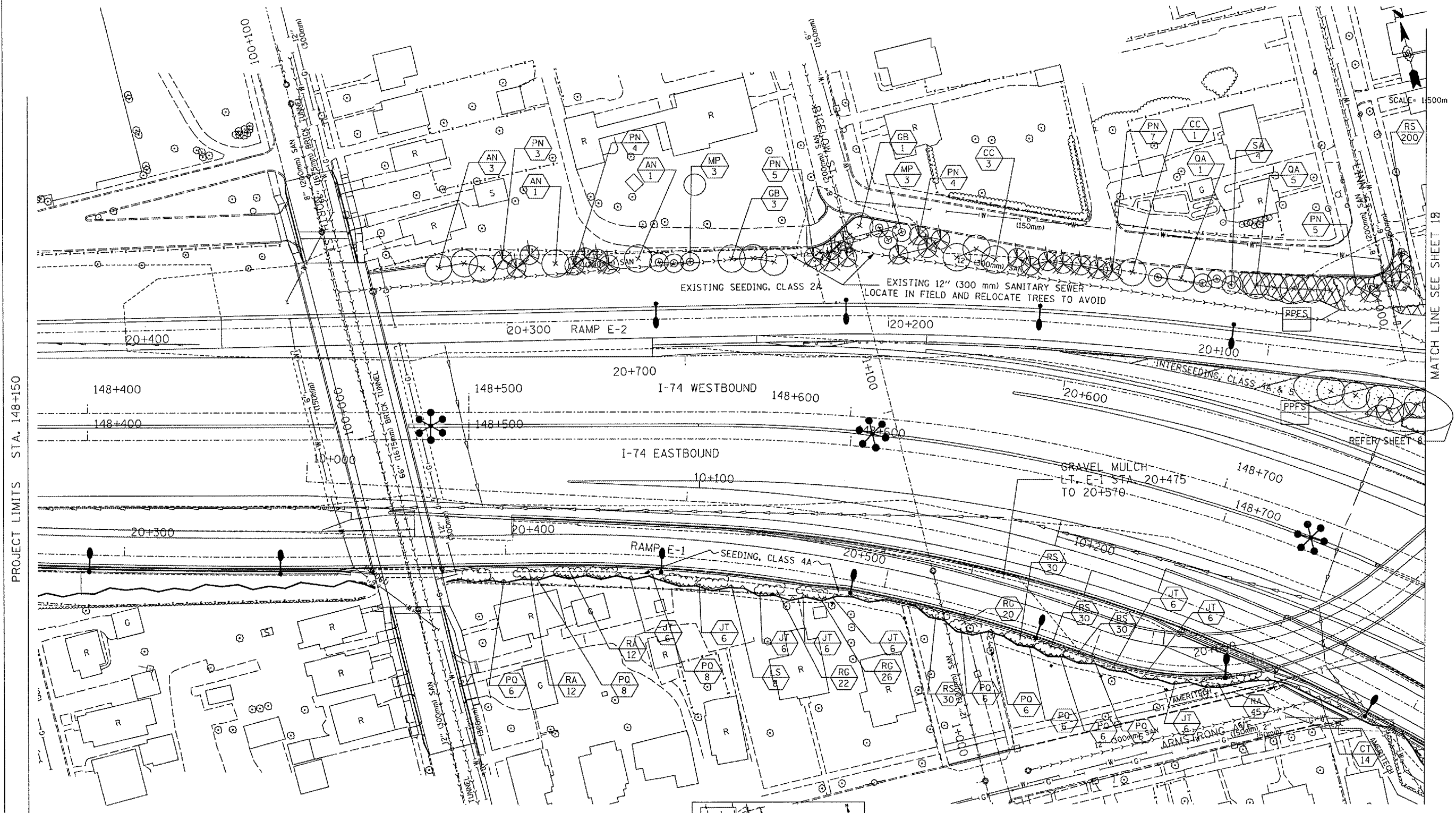
REVISIONS	
NAME	DATE

ILLINOIS DEPARTMENT OF TRANSPORTATION  
 FAI ROUTE 74 ( I-74 )  
 LANDSCAPE LOCATION PLAN 1  
 DRAWN BY: KC/DL  
 CHECKED BY: JB  
 DATE: 07/16/2004

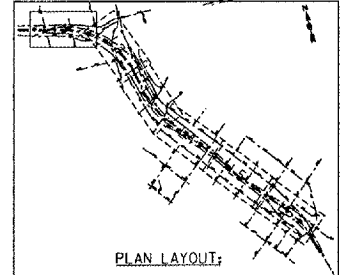
**TERRA**  
 ENGINEERING LTD.  
 585 N. LaSalle Street, Suite 250  
 Chicago, IL 60610  
 (312) 467-8123



F.A.I. RTE.	SECTION	COUNTY	TOTAL SHEETS	SHEET NO.
74	Landscaping 2007	PEORIA	21	14
STA.	TO STA.			
FED. ROAD DIST. NO. 4	ILLINOIS	FED. AID PROJECT		



- LEGEND**
- VINES ON SOUND/RETAINING WALL
  - SHRUBS
  - PROPOSED EVERGREEN TREE
  - PROPOSED SMALL ORNAMENTAL TREE
  - PROPOSED SHADE TREE (5' DIA. MULCH SAUCER-TYP. -FOR ALL TREES & SHRUBS)
  - INTERSEEDING, CLASS 4A AND/OR 5
  - PERENNIAL PLANTS, FOR SUN
  - PROPOSED PERENNIAL PLANTS, FOR SUN (REFER TO SHEET NO. 9)
  - PROPOSED PLANT KEY (REFER SHEET NO.4) PROPOSED QUANTITY OF SPECIFIED PLANT
  - PROPOSED IRRIGATION CONNECTION



**TERRA ENGINEERING LTD.**  
 585 N. LaSalle Street, Suite 250  
 Chicago, IL 60610  
 (312) 467-8123

REVISIONS	
NAME	DATE
PS&E RJD	04/18/07
FINAL PLAN	05/11/04
PRELIMINARY PLAN	03/01/04
PRELIMINARY	11/17/03

ILLINOIS DEPARTMENT OF TRANSPORTATION  
 FAI ROUTE 74 ( I-74)  
 LANDSCAPE - LAYOUT 1  
 DATE: 07/16/2004  
 DRAWN BY: KC/DL  
 CHECKED BY: JB

PROJECT LIMITS STA. 148+150

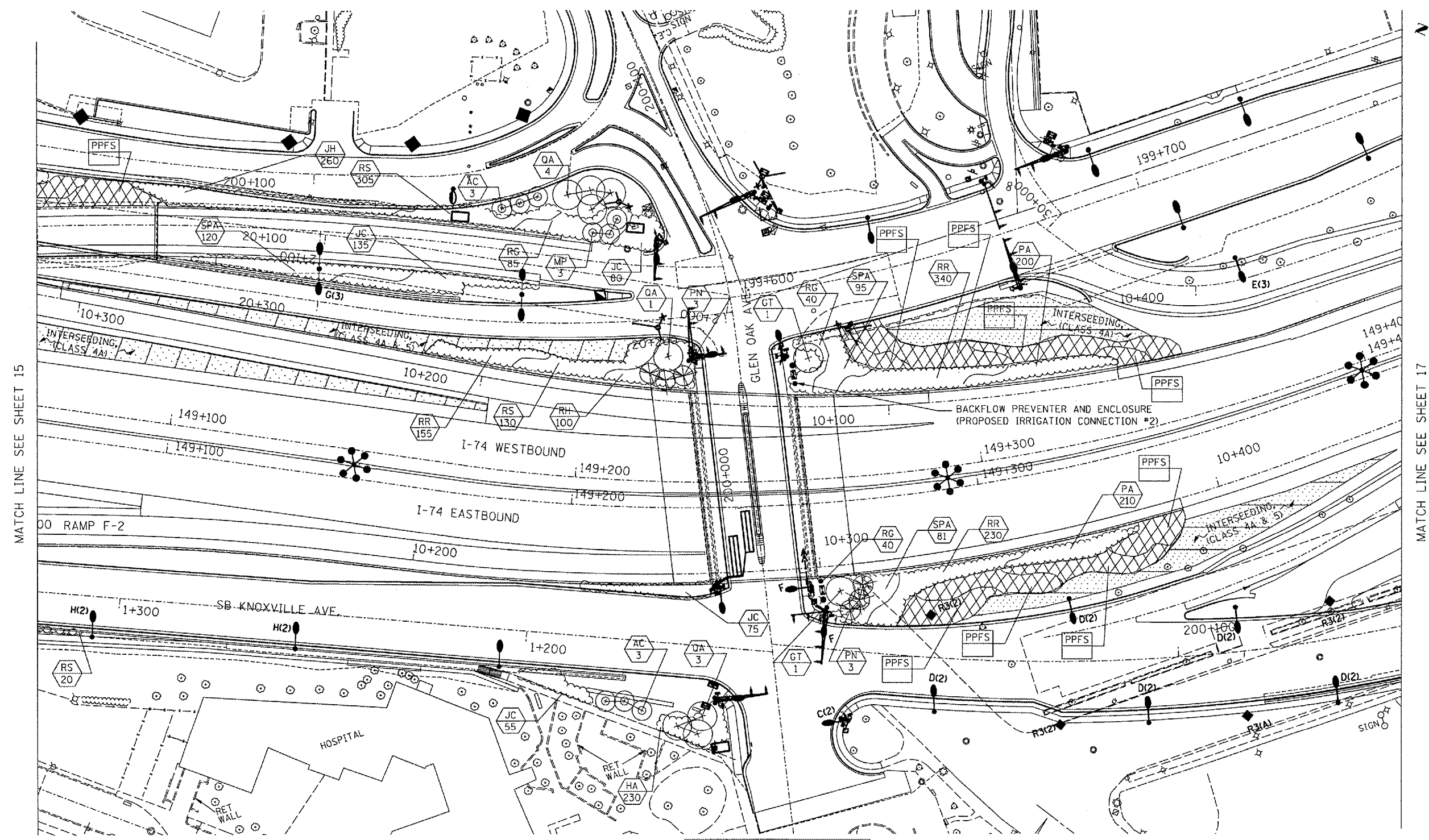
MATCH LINE SEE SHEET 13

REFER SHEET 8

SCALE= 1:500m



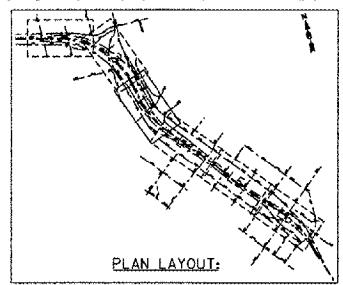
F.A.I. RTE.	SECTION	COUNTY	TOTAL SHEETS	SHEET NO.
74	I-74 Landscaping 2007	PEORIA	21	16
STA.	TO STA.			
FED. ROAD DIST. NO. 4	ILLINOIS	FED. AID PROJECT		



SCALE= 1:500m

LEGEND

- VINES ON SOUND/RETAINING WALL
- SHRUBS
- PROPOSED EVERGREEN TREE
- PROPOSED SMALL ORNAMENTAL TREE
- PROPOSED SHADE TREE (5' DIA. MULCH SAUCER-TYP. -FOR ALL TREES & SHRUBS)
- INTERSEEDING, CLASS 4A AND/OR 5
- PERENNIAL PLANTS, FOR SUN
- PROPOSED PERENNIAL PLANTS, FOR SUN (REFER TO SHEET NO. 9)
- PROPOSED PLANT KEY (REFER SHEET NO.4) PROPOSED QUANTITY OF SPECIFIED PLANT
- PROPOSED IRRIGATION CONNECTION



**TERRA**  
ENGINEERING LTD.  
585 N. LaSalle Street, Suite 250  
Chicago, IL 60610  
(312) 467-8123

REVISIONS	
NAME	DATE
PS&E RJD	06/18/04
FINAL PLAN	05/11/04
PRELIMINARY	03/01/04
	11/17/03

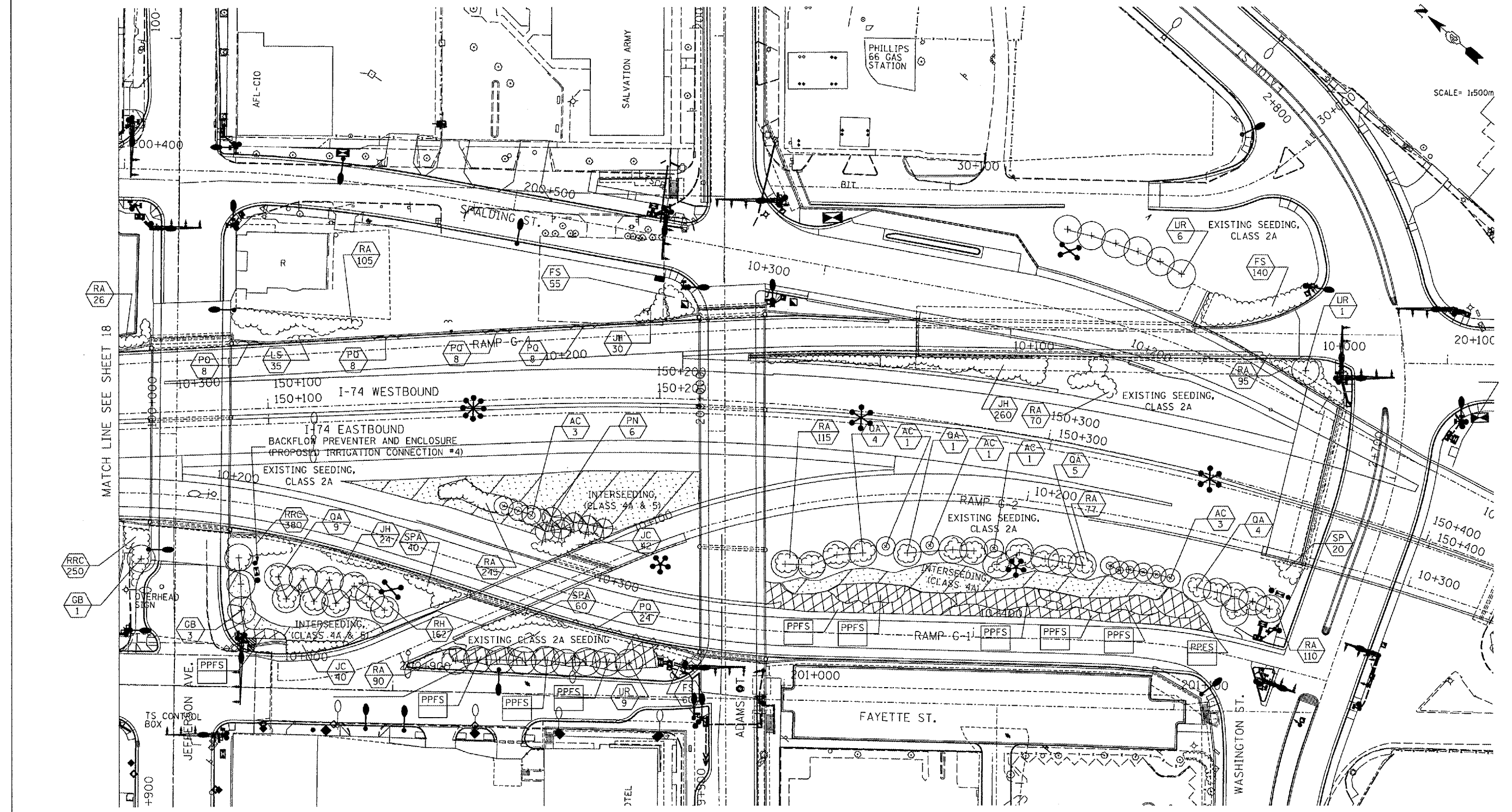
ILLINOIS DEPARTMENT OF TRANSPORTATION  
FAI ROUTE 74 ( I-74)  
LANDSCAPE - LAYOUT 3  
DATE: 07/16/2004  
DRAWN BY: KC/DL  
CHECKED BY: JB





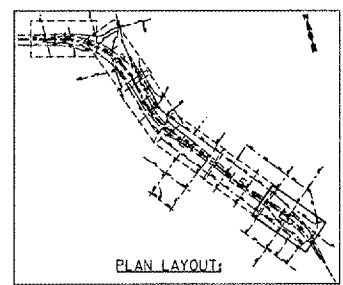


F.A.I. RTE.	SECTION	COUNTY	TOTAL SHEETS	SHEET NO.
FAI 04 I-74	74	PEORIA	21	19
STA.	TO STA.			
FED. ROAD DIST. NO. 4	ILLINOIS	FED. AID PROJECT		



**LEGEND**

- VINES ON SOUND/RETAINING WALL
- SHRUBS
- PROPOSED EVERGREEN TREE
- PROPOSED SMALL ORNAMENTAL TREE
- PROPOSED SHADE TREE (5' DIA. MULCH SAUCER-TYP. -FOR ALL TREES & SHRUBS)
- INTERSEEDING, CLASS 4A AND/OR 5
- PERENNIAL PLANTS, FOR SUN
- PROPOSED PERENNIAL PLANTS, FOR SUN (REFER TO SHEET NO. 9)
- PROPOSED PLANT KEY (REFER SHEET NO.4) PROPOSED QUANTITY OF SPECIFIED PLANT
- PROPOSED IRRIGATION CONNECTION



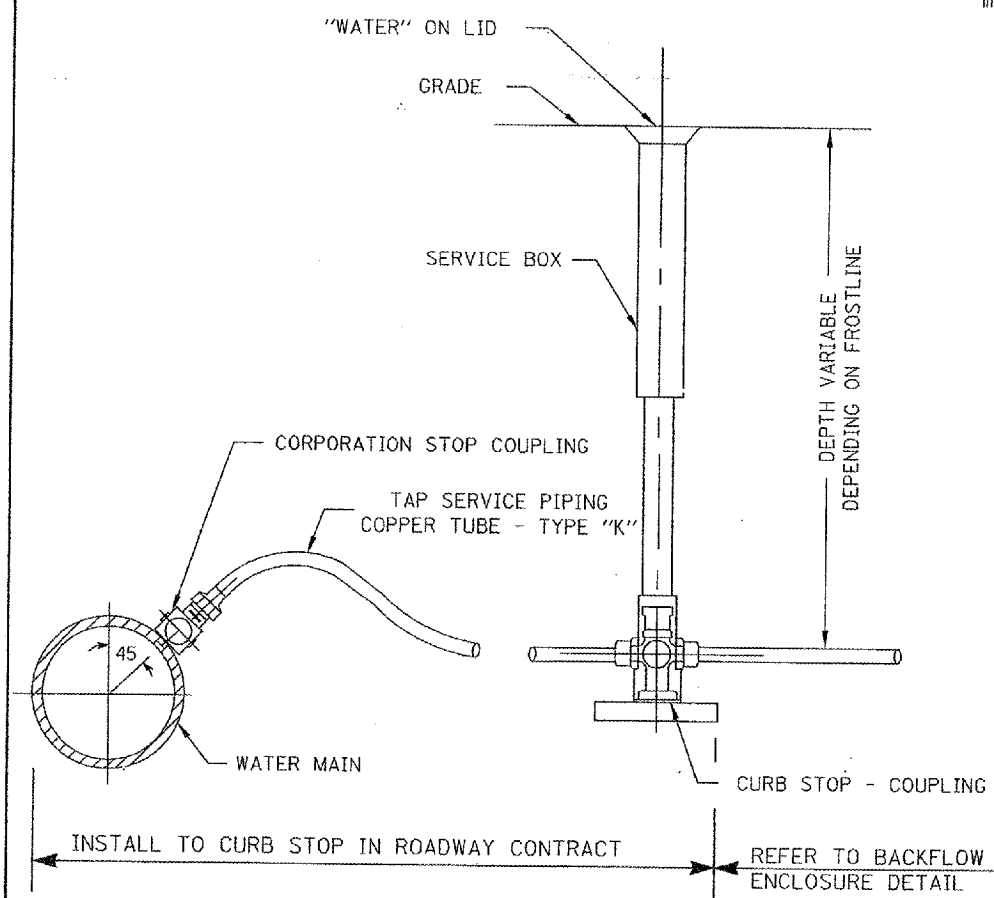
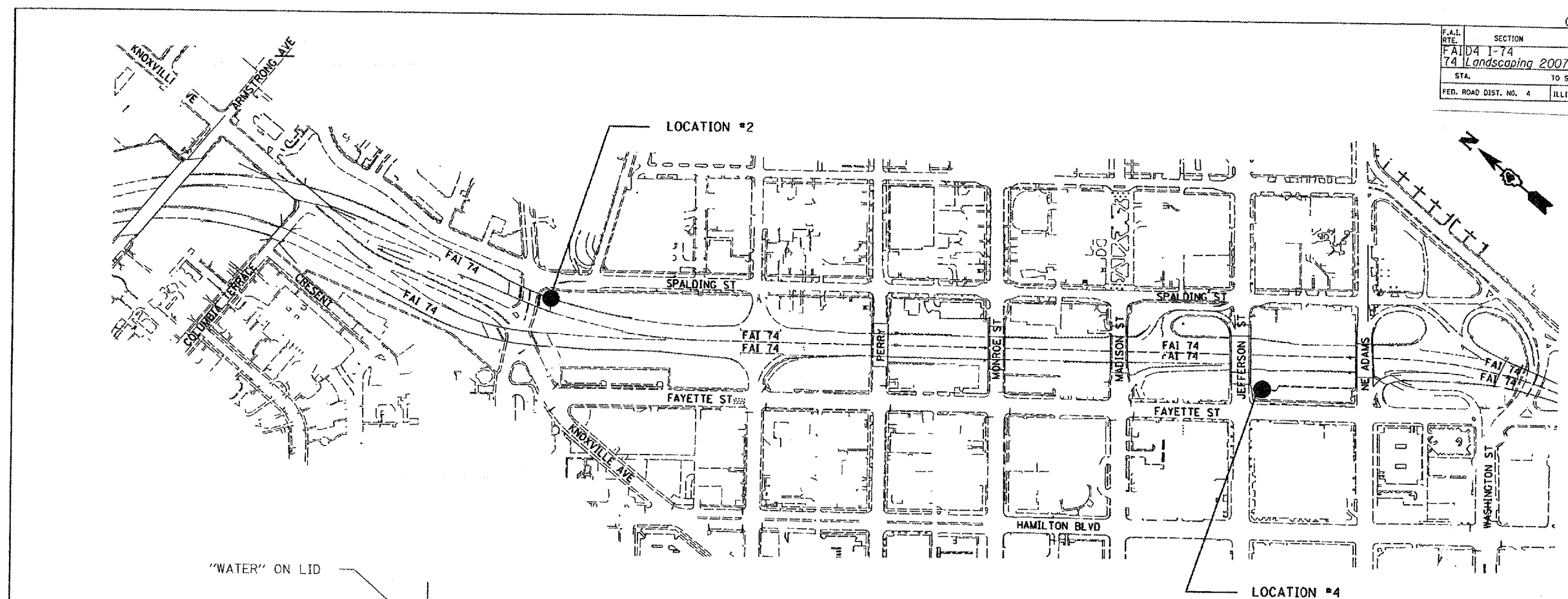
**TERRA ENGINEERING LTD.**  
 585 N. LaSalle Street, Suite 258  
 Chicago, IL 60610  
 (312) 467-0123

REVISIONS	
NAME	DATE
PS&E RJD	04/18/07
FINAL PLAN	05/11/04
PRELIMINAL PLAN	03/01/04
PRELIMINARY	11/17/03

ILLINOIS DEPARTMENT OF TRANSPORTATION  
 FAI ROUTE 74 (I-74)  
 LANDSCAPE - LAYOUT 6

DATE: 07/16/2004  
 DRAWN BY: KC/DL  
 CHECKED BY: JB

CONTRACT NO. 68367				
F.A.I. RTE.	SECTION	COUNTY	TOTAL SHEETS	SHEET NO.
FAI 74	I-74	PEORIA	21	20
STA.	TO STA.			
FED. ROAD DIST. NO. 4	ILLINOIS	FED. AID PROJECT		



**NOTES**

SERVICE BOX AND METER VAULT SHOULD BE LOCATED BEHIND PROPOSED SIDEWALK AND/OR CURB AND GUTTER IN GRASS.

THE CONTRACTOR SHALL COORDINATE WITH ILLINOIS AMERICAN WATER COMPANY TO INSTALL WATER SERVICE LINES AT THE LOCATIONS SHOWN PRIOR TO RECONSTRUCTING ROADWAY. THIS WORK WILL BE PAID IN ACCORDANCE WITH ARTICLE 109.05 OF THE STANDARD SPECIFICATIONS.

LOCATION	CONTRACT	REF. BL.	STATION	OFF-SET
#2	68194	SPALDING ST.	199+615	12 M RT
#4	68194	FAYETTE ST.	200+863	16 M RT

<p><b>TERRA ENGINEERING LTD.</b> 505 N. LaSalle Street, Suite 200 Chicago, IL 60610 (312) 467-0123</p>	<b>REVISIONS</b> NAME      DATE		ILLINOIS DEPARTMENT OF TRANSPORTATION FAI ROUTE 74 (I-74)  <b>PIPING FOR LANDSCAPING WATER SERVICE</b>  DRAWN BY: KC/DL CHECKED BY: JB
	FINAL PLAN	05/11/04	
	PRELIMINARY PLAN	03/01/04	
	PRELIMINARY	11/17/03	
		DATE: 05/11/2004	

CONTRACT NO. 68367

F.A.I. RTE.	SECTION	COUNTY	TOTAL SHEETS	SHEET NO.
74	I-74 Landscaping 2007	PEORIA	21	21
STA.		TO STA.		
FED. ROAD DIST. NO. 4		ILLINOIS	FED. AID PROJECT	

SHEET INTENTIONALLY LEFT BLANK



REVISIONS	
NAME	DATE
FINAL PLAN	05/11/04
PREFINAL PLAN	03/01/04
PRELIMINARY	11/17/03

ILLINOIS DEPARTMENT OF TRANSPORTATION  
FAI ROUTE 74 ( I-74)  
BACKFLOW PREVENTER  
DETAILS  
DATE: 07/16/2004  
DRAWN BY: KC/DL  
CHECKED BY: JB