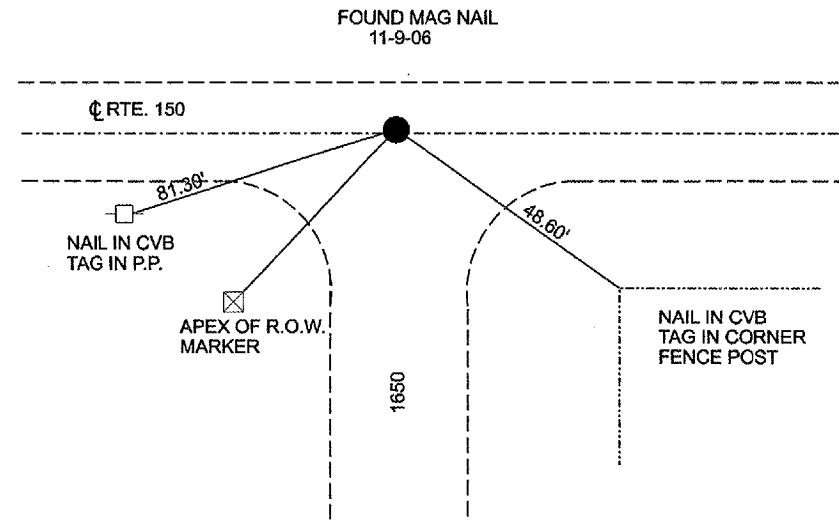
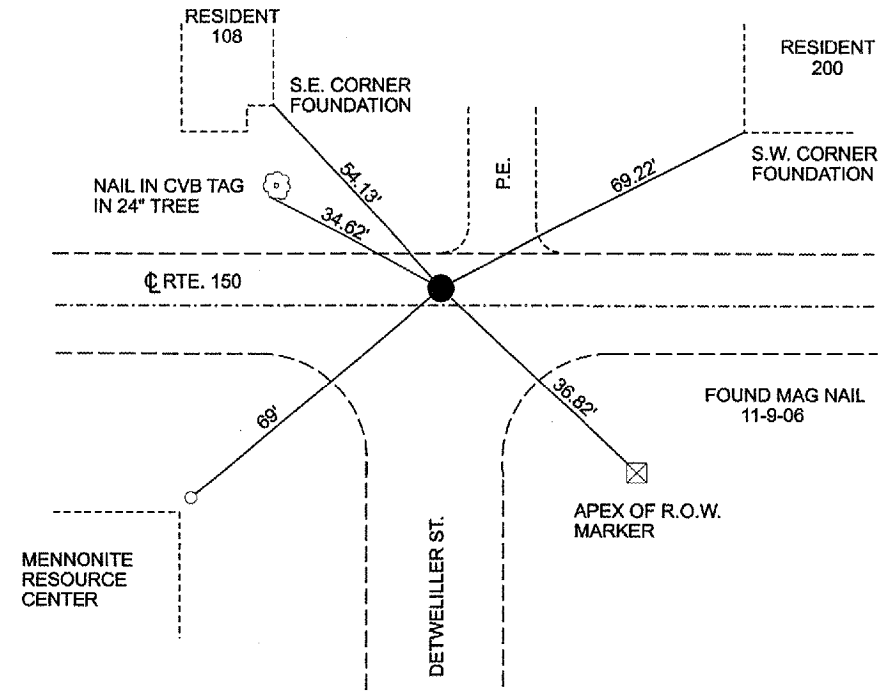


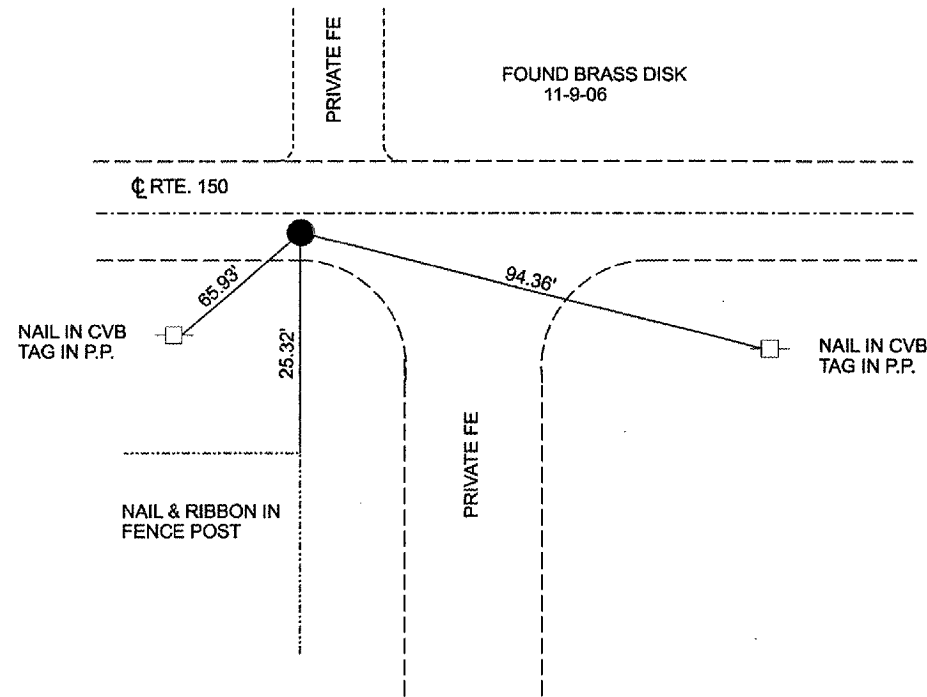
F.A.S. RTE.	SECTION	COUNTY	TOTAL SHEETS	SHEET NO.
2466	(11)RS-3	WOODFORD	23	18
FED. ROAD DIST. NO. ILLINOIS FED. AID PROJECT				



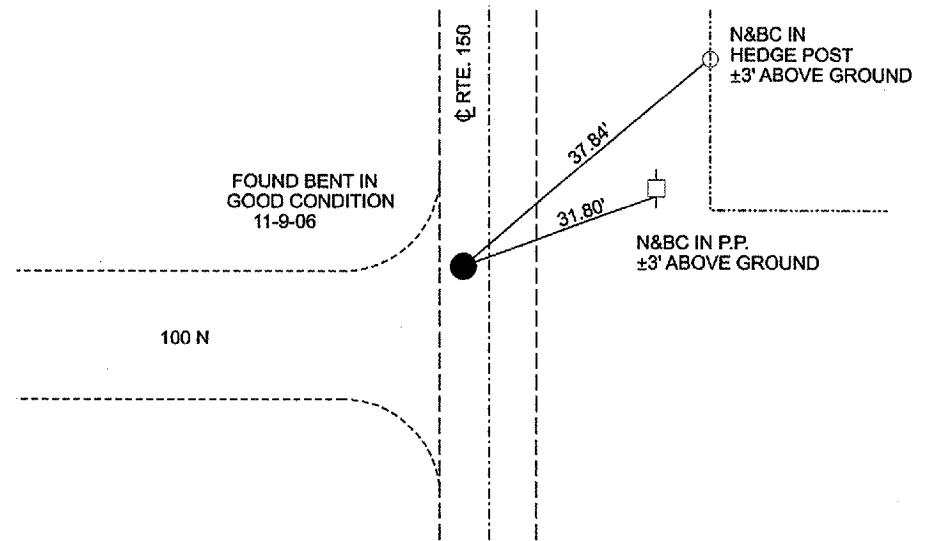
SEC. 21 T 25N R 1W 3RD PRINCIPAL
NORTH QUARTER CORNER OF SEC. 21
FOUND PK NAIL ON CL. IL. RT. 150



SEC. 22 T 25N R 1W 3RD PRINCIPAL
NORTH QUARTER CORNER OF SEC. 22
±3.3' NORTH OF CL. IL. RT. 150



SEC. 23 T 25 R1W 3RD PRINCIPAL
NORTHEAST CORNER SEC. 23
FOUND BRASS DISK ±5' SOUTH OF CL. IL. RT. 150



SEC. 30 T 25N R 1E 3RD PRINCIPAL
NORTH EAST CORNER OF SEC. 30
FOUND PK NAIL ±3.3' WEST OF CL. IL. RT. 150



REVISIONS	
NAME	DATE

ILLINOIS DEPARTMENT OF TRANSPORTATION

TIE POINTS
US 150 (FAS 2466)

DATE _____ DRAWN BY _____ CHECKED BY _____