

F.A.S. RTE.	SECTION	COUNTY	TOTAL SHEETS	SHEET NO.
2466	(11)RS-3	WOODFORD	23	1

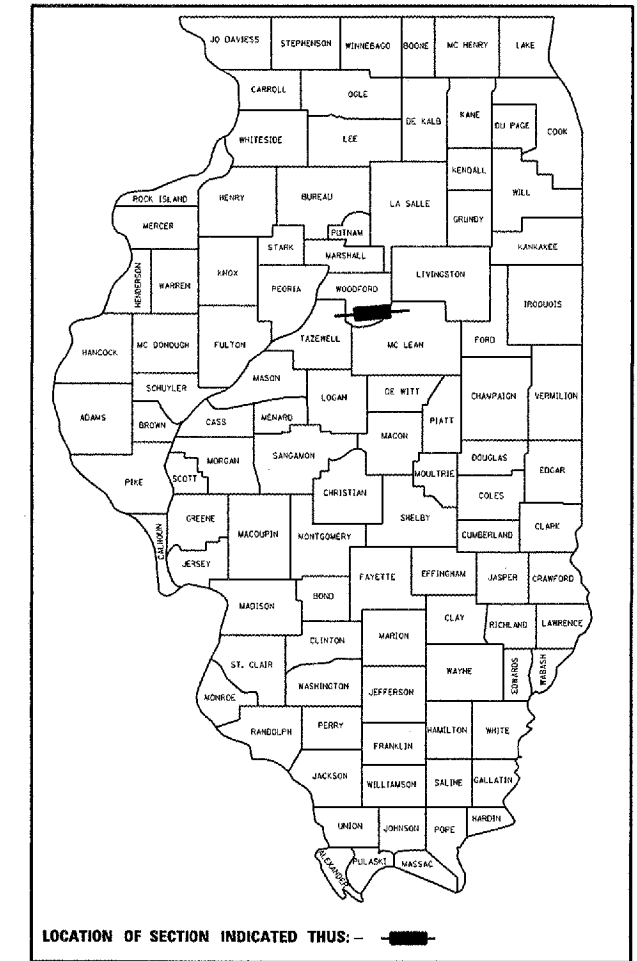
STATE OF ILLINOIS
DEPARTMENT OF TRANSPORTATION
DIVISION OF HIGHWAYS

PROPOSED
HIGHWAY PLANS

FAS 2466 ROUTE US 150
SECTION (11)RS-3
WOODFORD COUNTY
C-94-040-06

PROJECT RS-2466 (110)

D-94-033-06



INDEX OF SHEETS

- 1 COVER SHEET
- 2-4 GENERAL NOTE / COMMITMENTS
- 5-6 SUMMARY OF QUANTITIES
- 7-9 TYPICAL SECTIONS
- 10-15 SCHEDULE OF QUANTITIES
- 16 LINE DIAGRAM
- 17 BUTT JT DETAIL AT RR CROSSING
- 18 REFERENCE PTS. / SURVEY MARKER
- 19-23 DISTRICT CADD STANDARDS

STANDARDS

- 406201
- 442201-02
- 701006-02
- 701306-01
- 701311-02
- 701336-04
- 702001-06
- 780001-01

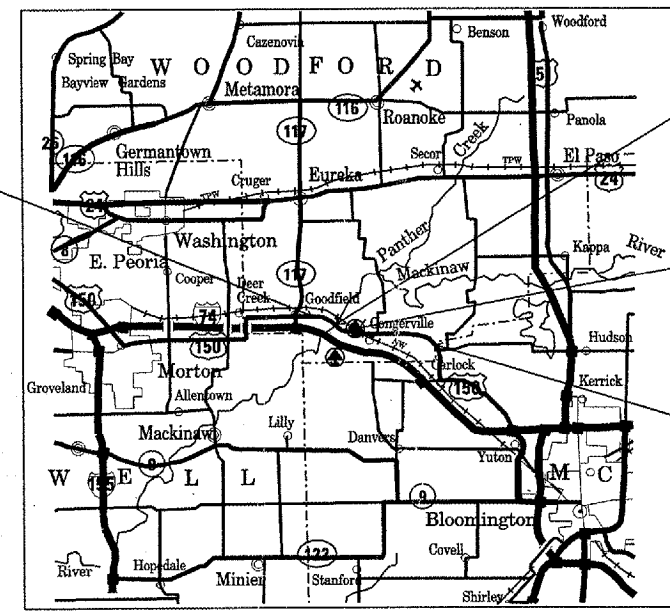
DESIGN DESIGNATION
 RURAL MAJOR COLLECTOR

ADT = 3,700
 VEHICLES

PV = 85.9%
 SU = 11.3%
 MU = 2.8%

J.U.L.I.E.
 JOINT UTILITY LOCATION INFORMATION FOR EXCAVATION
 1-800-892-0123

IMPROVEMENT BEGINS
STA. 193+74



BRIDGE OMISSION
SN 102-0043
STA. 284+72 - 289+05

R. R. OMISSION
STA. 1096+42 - 1096+70

IMPROVEMENT ENDS
STA. 244+62

STATION EQUATIONS

- STA. 209+25 BACK = STA. 209+30 AHEAD
- STA. 263+99.2 BACK = STA. 263+98.8 AHEAD
- STA. 283+91.05 BACK = STA. 283+57.65 AHEAD
- STA. 326+00 BACK = STA. 1043+44.14 AHEAD
- STA. 1121+64 BACK = STA. 0+00 AHEAD
- STA. 132+41.6 BACK = STA. 137+54.9 AHEAD
- STA. 171+90.3 BACK = STA. 171+97.7 AHEAD

GROSS LENGTH = 8.53 MILES NET LENGTH = 8.44 MILES

STATE OF ILLINOIS
 DEPARTMENT OF TRANSPORTATION
 DIVISION OF HIGHWAYS

SUBMITTED *March 19 2007*

[Signature]
 DEPUTY DIRECTOR OF HIGHWAYS, REGION ENGINEER

May 11 2007
Eric E. Harn
 INTERIM ENGINEER OF DESIGN AND ENVIRONMENT

May 11 2007
Milton R. Seese
 DIRECTOR OF HIGHWAYS, CHIEF ENGINEER

PRINTED BY THE AUTHORITY
OF THE STATE OF ILLINOIS

DESIGNER: Elias Eiderzi (309-671-3459) PROJECT ENGR.: MAUREEN ADDIS (309-671-3454)

F.A.S. RTE.	SECTION	COUNTY	TOTAL SHEETS	SHEET NO.
2466	(1)RS-3	WOODFORD	23	2
FED. ROAD DIST. NO.		ILLINOIS	FED. AID PROJECT	

COMMITMENTS

Commitments are not to be altered without the written consent of all parties to which the commitment was made.

No Commitments have been made for this project.

GENERAL NOTES

PROPERTY OWNER ACCESS REQUIREMENT

Access must be maintained to all existing properties during construction per Article 107.09 unless arrangements are made in writing by the Contractor with the property owners with a copy to the Engineer for short-term closures.

WINTER SHUTDOWN RESTRICTIONS ON COLD-MILLED PROJECTS

Prior to winter shutdown the following steps shall be taken:

- All cold milled surface shall be overlaid
- All lanes shall be reopened to traffic
- Manholes, where applicable, shall be adjusted to the elevation of the binder course/leveling binder to ease in plowing snow, and re-adjusted to finished grade in the Spring. The initial manhole adjustment will be paid for at the contract unit price and any re-adjustment, as directed by the Engineer, will be paid for in accordance with Article 109.04.
- Temporary or permanent pavement marking shall be placed as applicable at no cost to the Department.

ENVIRONMENTAL REVIEWS

Prior to the use of any proposed borrow areas, use areas (temporary access roads, detours, run-arounds, etc.) and/or waste areas, the Contractor shall file the required environmental resource request surveys according to Section 107.22 of the Standard Specifications. These surveys are required in order for the Department to conduct cultural and biological resource surveys for the proposed site.

Prior to any waste materials being removed from the construction site the required environmental resource surveys will need to be obtained and filed by the Contractor. Excess waste products removed from the construction site shall be disposed of as required in Section 202.03 of the Standard Specifications.

Any protruding metal bars shall be removed prior to the disposal of broken concrete at approved disposal sites.

The required environmental resource documentation shall include the following:

- BDE Form 2289 (Environmental Survey Request)
- A location map showing the size limits and location of the use area
- Signed property owner agreement form
- Color photographs depicting the use area

Please note that a minimum of two weeks shall be allowed for the District to obtain the required environmental clearances.

AGGREGATE SHOULDERS, TYPE B

Aggregate Shoulders, Type B shall be required for all granular construction of side roads, entrances, and mailbox turnouts, whether or not a portion of the surfaces thus constructed are to be covered with a bituminous surface, except where noted differently on the plans.

REVISIONS	
NAME	DATE

ILLINOIS DEPARTMENT OF TRANSPORTATION

GENERAL NOTES
US 150 (FAS 2466)

DATE _____ DRAWN BY _____
CHECKED BY _____

F.A.S. RTE.	SECTION	COUNTY	TOTAL SHEETS	SHEET NO.
2466	(1)RS-3	WOODFORD	23	3
FED. ROAD DIST. NO.		ILLINOIS	FED. AID PROJECT	

GENERAL NOTES (CONTINUED)

PAVEMENT STATION NUMBERS AND PLACEMENTS

The Contractor shall provide labor and materials required to imprint pavement station numbers in the finished surface of the pavement and/or overlay. The numbers shall be approximately 3/4 inch (20mm) wide, 5 inches (125mm) high and 5/8 inch (15mm) deep.

The pavement station numbers shall be installed as specified herein:

Interval - 200 feet (English stationing) or 100 meters (metric stationing)

Bottom of Numbers - 6 inches (150 mm) from the inside edge of the pavement marking

Location:

- 2, 3, & 5 Lane Pavements - right edge of pavement in direction of increasing stations
- Multi-lane Divided Roadways - outside edge of pavement in both directions
- Ramps - along baseline edge of pavement

Position - stations shall be placed so they can be read from the adjacent shoulder

Format - English (Metric) pavement stations shall use this format "XX+X00 (XXX)", where X represents the pavement station

This work will not be paid for separately, but will be included in the cost of the associated pavement and/or overlay pay items.

BUTT JOINTS CUTTING TIME RESTRICTION

Butt Joints shall not be milled more than three (3) days prior to placement of the hot-mix asphalt surface course

PAVING SURFACE COURSE

Continuous paving operations on the main roadway shall be maintained at all times during the construction of the hot-mix asphalt surface. No interruptions for side roads, entrances, turn lanes, etc. will be allowed

HOT-MIX ASPHALT MIXTURE REQUIREMENT

Mixture Uses(s):	Leveling Binder	Surface Course	Class D Patches	Incidental Surface Course
AC / PG	SBS PG70-22	PG 64-22	PG 64-22	PG 64-22
RAP %: (Max) **	0%	15%	25%	15%
Design Air Voids:	4.0% @ N=50	4.2% @ N=50	4.2% @ N=50	4.2% @ N=50
Mixture Compistion: (GRADATION MIXTURE)	IL 4.75	IL 9.5 or IL 12.5	IL 9.0	IL 9.5 or IL 12.5
Friction Aggregate:	N.A.	MIXTURE D (Dolomite Only)	N.A.	MIXTURE D (Dolomite Only)

** IF THE RAP OPTION IS SELECTED, THE ASPHALT CEMENT GRADE MAY NEED TO BE ADJUSTED; THIS WILL BE DETERMINED BY THE MATERIALS ENGINEER.

STRIP REFLECTIVE CRACK CONTROL PLACEMENT

Strip reflective crack control treatment shall be placed on the cold milled surface.

ENGINEERS FIELD OFFICE

Add the following sentence to the end of paragraph 670.02(i) and 670.04(e):

All of the telephone lines provided shall have unpublished numbers.

REVISIONS		ILLINOIS DEPARTMENT OF TRANSPORTATION
NAME	DATE	
		GENERAL NOTES US 150 (FAS 2466)
DATE		DRAWN BY CHECKED BY

F.A.S. RTE.	SECTION	COUNTY	TOTAL SHEETS	SHEET NO.
2466	(1)RS-3	WOODFORD	23	4
FED. ROAD DIST. NO. _		ILLINOIS	FED. AID PROJECT	

JOB SPECIFIC NOTES

PERMANENT SURVEY MARKERS

Where section or subsection monuments are encountered, the engineer shall be notified before such monuments are removed. The Contractor shall protect and carefully preserve all monuments until an authorized surveyor or agent has witnessed or otherwise referenced their location. The Contractor shall be responsible for having an authorized surveyor reestablish any section or subsection monuments destroyed by his operations.

ROADWAY ISOLATION JOINTS

The roadway isolation joints are located approximately 100 feet on either side of the bridge omission (Sta. 284+72 - 289+05). After paving, the joints are to be sawed out and cleaned. Then filled back in with hot-poured joint sealer (article 1050.02).

This work will not be paid for separately, but will be included in the cost of the associated pavement and/or overlay pay items.

ENTRANCES THAT ARE PCC

Existing PCC entrances/driveways will not be milled, unless at the discretion of the Resident Engineer. A 5 foot taper shall be placed to replace the change of elevation between the mainline and entrance as directed by the Engineer.

REVISIONS	
NAME	DATE

ILLINOIS DEPARTMENT OF TRANSPORTATION
JOB
SPECIFIC NOTES
US 150 (FAS 2466)
 DRAWN BY _____
 CHECKED BY _____
 DATE _____

F.A.S. RTE.	SECTION	COUNTY	TOTAL SHEETS	SHEET NO.
2466	(11RS-3)	WOODFORD	23	5
FED. ROAD DIST. NO. - ILLINOIS FED. AID PROJECT				

SUMMARY OF QUANTITIES					80% FED 20% STATE
					INTERSTATE ROADWAY
CODE NO.	PAY ITEM	UNIT	TOTAL QUANTITY	1000	
40600215	POLYMERIZED BITUMINOUS MATERIALS (PRIME COAT)	TON	60.4	60.4	
40600300	AGGREGATE (PRIME COAT)	TON	237	237	
X4067107	POLYMERIZED LEVELING BINDER (MACHINE METHOD), IL-4.75, N50	TON	4,650	4,650	
40600895	CONSTRUCTING TEST STRIP	EACH	1	1	
40600982	HOT-MIX ASPHALT SURFACE REMOVAL - BUTT JOINT	SQ YD	7,728	7,728	
40600990	TEMPORARY RAMP	SQ YD	484	484	
40603335	HOT-MIX ASPHALT SURFACE COURSE, MIX "D", N50	TON	9,322	9,322	
40800050	INCIDENTAL HOT-MIX ASPHALT SURFACING	TON	813	813	
44000155	HOT-MIX ASPHALT SURFACE REMOVAL, 1 1/2"	SQ YD	110,079	110,079	
48101200	AGGREGATE SHOULDERS, TYPE B	TON	1,238	1,238	
44201803	CLASS D PATCHES, TYPE II, 13 INCH	SQ YD	772	772	
44201807	CLASS D PATCHES, TYPE III, 13 INCH	SQ YD	211	211	
44201809	CLASS D PATCHES, TYPE IV, 13 INCH	SQ YD	224	224	
44300200	STRIP REFLECTIVE CRACK CONTROL TREATMENT	FOOT	44,563	44,563	
66700205	PERMANENT SURVEY MARKERS, TYPE 1	EACH	4	4	
66700605	PERMANENT SURVEY TIES	EACH	16	16	
67000400	ENGINEER'S FIELD OFFICE, TYPE A	CAL MO	3	3	
67100100	MOBILIZATION	L SUM	1	1	

SUMMARY OF
QUANTITIES

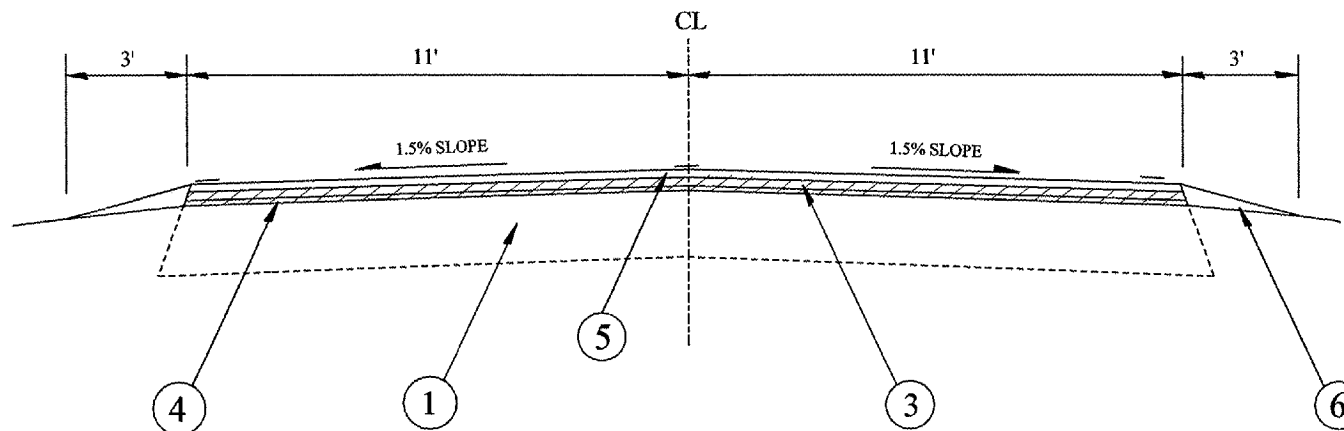
F.A.S. RTE.	SECTION	COUNTY	TOTAL SHEETS	SHEET NO.
2466	(11)RS-3	WOODFORD	23	6
FED. ROAD DIST. NO. _		ILLINOIS	FED. AID PROJECT	

SUMMARY OF QUANTITIES					80% FED 20% STATE
					INTERSTATE ROADWAY
CODE NO.	PAY ITEM	UNIT	TOTAL QUANTITY	1000	
70100460	TRAFFIC CONTROL AND PROTECTION, STANDARD 701306	L SUM	1	1	
70100600	TRAFFIC CONTROL AND PROTECTION, STANDARD 701336	L SUM	1	1	
70300100	SHORT - TERM PAVEMENT MARKING	FOOT	12,153	12,153	
70300210	TEMPORARY PAVEMENT MARKING-LETTERS AND SYMBOLS	SQ FT	122	122	
70300220	TEMPORARY PAVEMENT MARKING-LINE 4"	FOOT	134,680	134,680	
70300240	TEMPORARY PAVEMENT MARKING-LINE 6"	FOOT	88	88	
70300260	TEMPORARY PAVEMENT MARKING-LINE 12"	FOOT	140	140	
70300280	TEMPORARY PAVEMENT MARKING-LINE 24"	FOOT	66	66	
70301000	WORK ZONE PAVEMENT MARKING REMOVAL	SQ FT	1,351	1,351	
78005100	EPOXY PAVEMENT MARKING - LETTERS AND SYMBOLS	SQ FT	122	122	
* 78005110	EPOXY PAVEMENT MARKING - LINE 4"	FOOT	134,680	134,680	
* 78005130	EPOXY PAVEMENT MARKING - LINE 6"	FOOT	88	88	
* 78005150	EPOXY PAVEMENT MARKING - LINE 12"	FOOT	140	140	
* 78005180	EPOXY PAVEMENT MARKING - LINE 24"	FOOT	66	66	
78100100	RAISED REFLECTIVE PAVEMENT MARKER	EACH	557	557	
Z0048665	RAILROAD PROTECTIVE LIABILITY INSURANCE	L SUM	1	1	

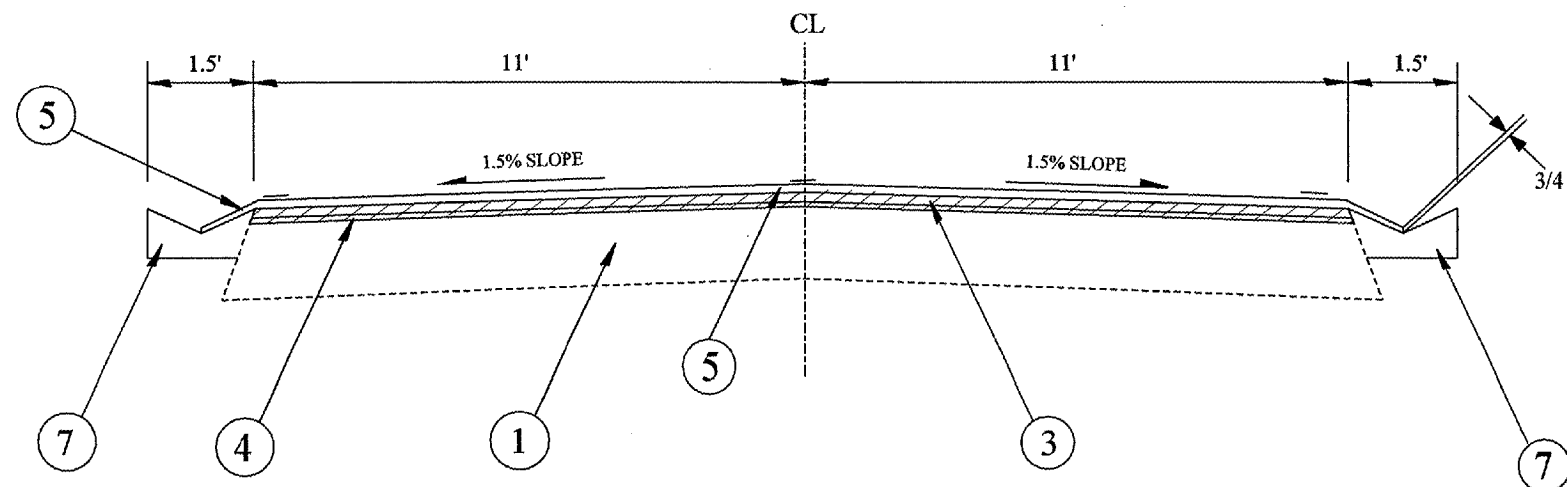
*SPECIALTY ITEM

SUMMARY OF QUANTITIES

F.A.S. RTE.	SECTION	COUNTY	TOTAL SHEETS	SHEET NO.
2466	(1)RS-3	WOODFORD	23	7
FED. ROAD DIST. NO. _		ILLINOIS	FED. AID PROJECT	



Sta. 193+74 to 209+25	Sta. 1043+44.14 to 1121+61
Sta. Eq. 209+25 (BK) = 209+30 (AH)	Sta. Eq. 1121+61 (BK) = 0+00 (AH)
Sta. 209+30 to 261+39	Sta. 0+00 to 132+41.6
Sta. 272+46.6 to 283+91.05	Sta. Eq. 132+41.6 (BK) = 137+54.9 (AH)
Sta. Eq. 283+91.05 (BK) = 283+57.65 (AH)	Sta. 137+54.9 to 171+90.3
Sta. 283+57.65 to 284+72	Sta. Eq. 171+90.3 (BK) = 171+97.7 (AH)
Sta. 289+05 to 326+00	Sta. 171+97.7 to 189+43.44
Sta. Eq. 326+00 (BK) = 1043+44.14 (AH)	Sta. 197+35.44 to 205+80.24



Sta. 261+39 to 263+99.2
 Sta. Eq. 263+99.2 (BK) = 263+98.8 (AH)
 Sta. 263+98.8 to 267+18.6

LEGEND

- 1. EXISTING PAVEMENT
- 2. EXISTING BITUMINOUS SHOULDER
- 3. PROPOSED HMA SURFACE REMOVAL, 1 1/2"
- 4. PROPOSED POLYMERIZED LEVELING BINDER, N50, 3/4"
- 5. PROPOSED HMA SURFACE CSE, MIX D, N50, 1 1/2"
- 6. PROPOSED AGGREGATE SHOULDER TY B, WEDGE
- 7. EXISTING CONCRETE GUTTER

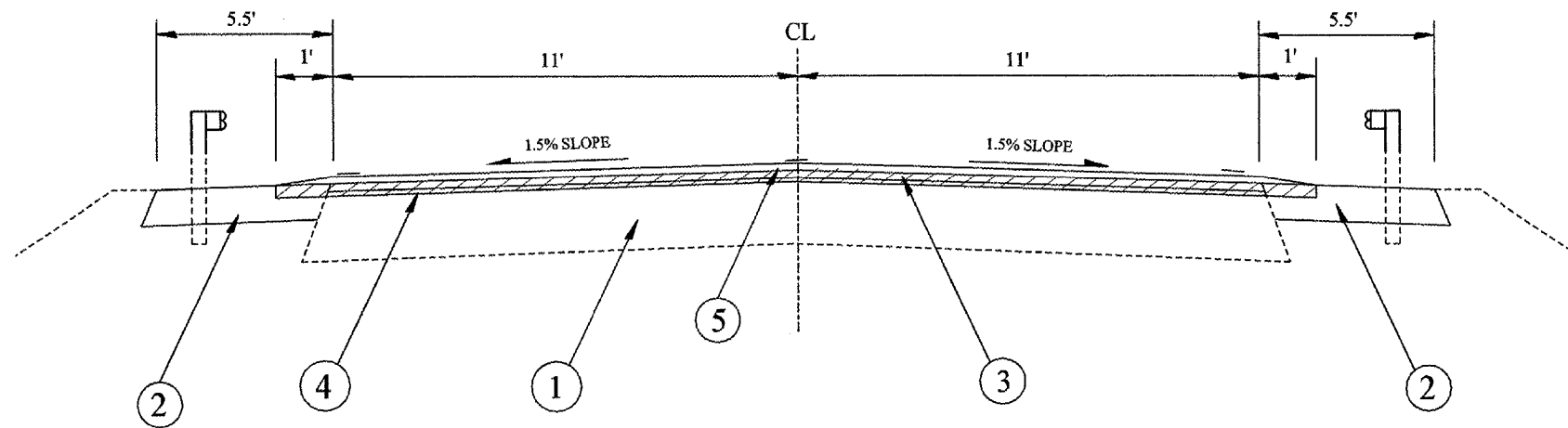
REVISIONS	
NAME	DATE

ILLINOIS DEPARTMENT OF TRANSPORTATION

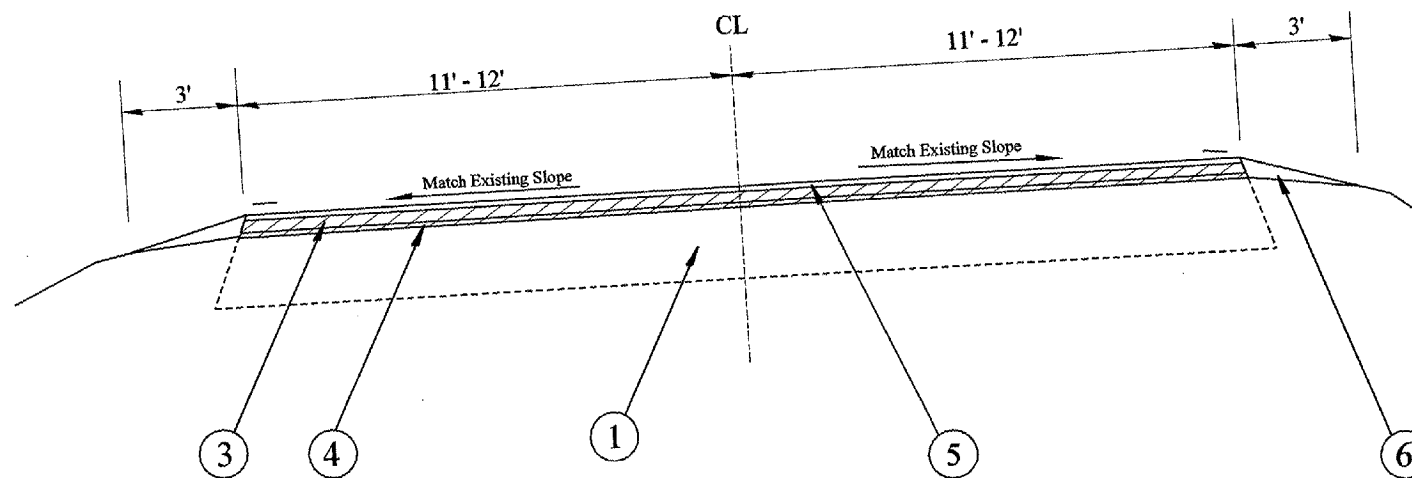
TYPICAL SECTIONS US 150 (FAS 2466)

DRAWN BY
 CHECKED BY
 DATE

F.A.S. RTE.	SECTION	COUNTY	TOTAL SHEETS	SHEET NO.
2466	(11)RS-3	WOODFORD	23	8
FED. ROAD DIST. NO. - ILLINOIS		FED. AID PROJECT		



Sta. 267+18.6 to 272+46.6



Thru Superelevated Sections
Sta. 189+43.44 to 197+35.44

LEGEND

- 1. EXISTING PAVEMENT
- 2. EXISTING BITUMINOUS SHOULDER
- 3. PROPOSED HMA SURFACE REMOVAL, 1 1/2"
- 4. PROPOSED POLYMERIZED LEVELING BINDER, N50, 3/4"
- 5. PROPOSED HMA SURFACE CSE, MIX D, N50, 1 1/2"
- 6. PROPOSED AGGREGATE SHOULDER TY B, WEDGE
- 7. EXISTING CONCRETE GUTTER

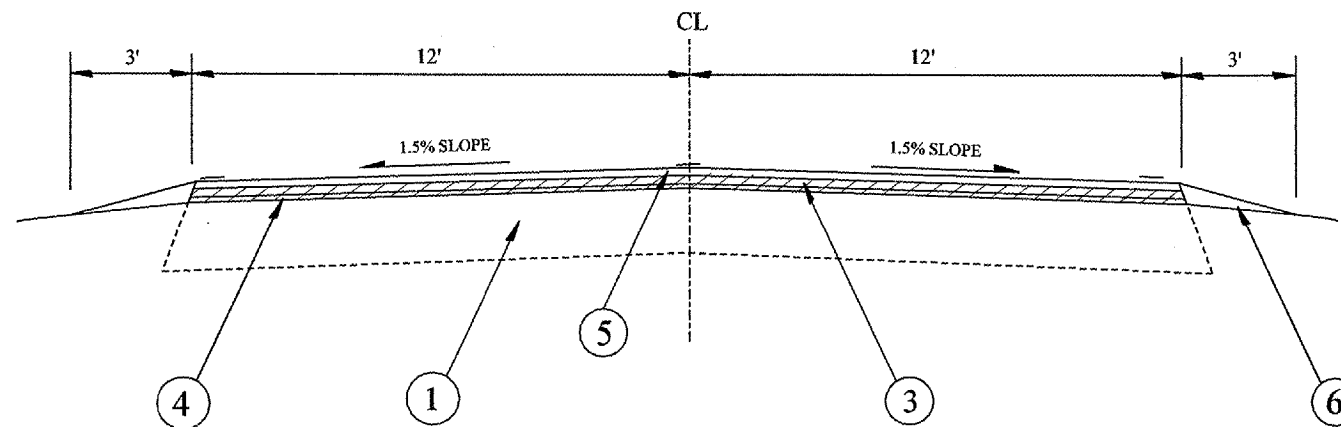
REVISIONS	
NAME	DATE

ILLINOIS DEPARTMENT OF TRANSPORTATION

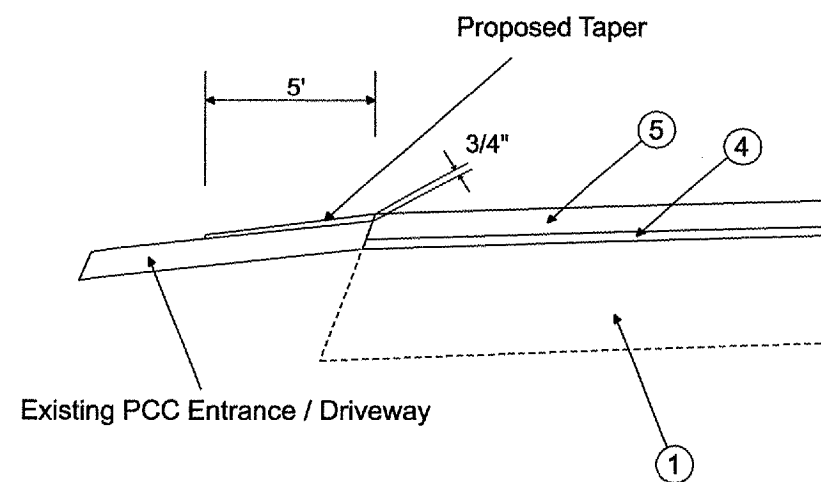
TYPICAL SECTIONS
US 150 (FAS 2466)

DRAWN BY
CHECKED BY
DATE

F.A.S. RTE.	SECTION	COUNTY	TOTAL SHEETS	SHEET NO.
2466	(11)RS-3	WOODFORD	23	9
FED. ROAD DIST. NO.		ILLINOIS	FED. AID PROJECT	



Sta. 205+80.24 to 244+62



LEGEND

1. EXISTING PAVEMENT
2. EXISTING BITUMINOUS SHOULDER
3. PROPOSED HMA SURFACE REMOVAL, 1 1/2"
4. PROPOSED POLYMERIZED LEVELING BINDER, N50, 3/4"
5. PROPOSED HMA SURFACE CSE, MIX D, N50, 1 1/2"
6. PROPOSED AGGREGATE SHOULDER TY B, WEDGE
7. EXISTING CONCRETE GUTTER

PCC ENTRANCE/DRIVEWAY DETAIL

REVISIONS	
NAME	DATE

ILLINOIS DEPARTMENT OF TRANSPORTATION

TYPICAL SECTIONS
US 150 (FAS 2466)

DATE _____ DRAWN BY _____
CHECKED BY _____

F.A.S. RYE	SECTION	COUNTY	TOTAL SHEETS	SHEET NO.
2466	(1)RS-3	WOODFORD	23	10
FED. ROAD DIST. NO.		ILLINOIS	FED. AID PROJECT	

ENGINEER'S FIELD OFFICE TYPE A	
LOCATION	CAL MO
JOBSITE	3
TOTAL	3

RAILROAD PROTECTIVE LIABILITY INSURANCE	
LOCATION	L SUM
1096+42 - 1096+70	1
TOTAL	1

MOBILIZATION	
LOCATION	L SUM
JOBSITE	1
TOTAL	1

PERMANENT SURVEY MARKERS, TYPE 1	
LOCATION	EACH
SEE PLAN SHEET	4
TOTAL	4

TRAFFIC CONTROL & PROTECTION, STANDARD 701306	
LOCATION	L SUM
JOBSITE	1
TOTAL	1

PERMANENT SURVEY TIES	
LOCATION	EACH
SEE PLAN SHEET	16
TOTAL	16

TRAFFIC CONTROL & PROTECTION, STANDARD 701336	
LOCATION	L SUM
JOBSITE	1
TOTAL	1

WORK ZONE PAVEMENT MARKING REMOVAL	
LOCATION	SQ FT
Sta. 193+74 - 244+62	1,351
TOTAL	1,351

CONSTRUCTING TEST STRIP	
LOCATION	EACH
JOBSITE	1
TOTAL	1

RAISED REFLECTIVE PAVEMENT MARKERS	
LOCATION	EACH
Sta. 193+74 - 244+62	557
TOTAL	557

STRIP REFLECTIVE CRACK CONTROL TREATMENT	
LOCATION	FOOT
As directed by the Resident Engineer	44,563
TOTAL	44,563

SCHEDULE OF QUANTITIES

F.A.S. RTE. 2466	SECTION (1)RS-3	COUNTY WOODFORD	TOTAL SHEETS 23	SHEET NO. 11
FED. ROAD DIST. NO. ILLINOIS FED. AID PROJECT				

EPOXY PAVEMENT MARKINGS						
LOCATION	4" YELLOW FEET	4" WHITE FEET	6" WHITE FEET	12" WHITE FEET	24" WHITE FEET	LETTER & SYMBOLS SQ FT
Sta. 193+74 - 209+25	441	3,102				
Sta. Eq. 209+25 = 209+30						
Sta. 209+30 - 263+99.2	8,465.40	10,938.40				
Sta. Eq. 263+99.2 - 263+98.8						
Sta. 263+98.8 - 283+91.05	2,384.50	3,984.50				
Sta. Eq. 283+91.05 = 283+57.65						
Sta. 283+57.65 - 284+72	228.7	228.7				
Bridge Omission 284+72 - 289+05						
Sta. 289+05 - 326+00	5,396.60	7,390				
Sta. Eq. 326+00 = 1043+44.14						
Sta. 1043+44.14 - 1096+42	7,218.52	10,595.72			33	61.2
R. R. Omission 1096+42 - 1096+70						
Sta. 1096+70 - 1121+64	1,437.68	4,988	44	70	33	61.2
Sta. Eq. 1121+64 = 0+00						
Sta. 0+00 - 132+41.6	7,412.15	26,483	44	70		
Sta. Eq. 132+41.6 = 137+54.9						
Sta. 137+54.9 - 171+90.3	5,234	6,870.80				
Sta. Eq. 171+90.3 - 171+97.7						
Sta. 171+97.7 - 244+62	7,351.30	14,528.60				
TOTAL	45,570	89,110	88	140	66	122.4
	134,680					

TEMPORARY PAVEMENT MARKINGS						
LOCATION	4" YELLOW FEET	4" WHITE FEET	6" WHITE FEET	12" WHITE FEET	24" WHITE FEET	LETTER & SYMBOLS SQ FT
Sta. 193+74 - 209+25	441	3,102				
Sta. Eq. 209+25 = 209+30						
Sta. 209+30 - 263+99.2	8,465.40	10,938.40				
Sta. Eq. 263+99.2 - 263+98.8						
Sta. 263+98.8 - 283+91.05	2,384.50	3,984.50				
Sta. Eq. 283+91.05 = 283+57.65						
Sta. 283+57.65 - 284+72	228.7	228.7				
Bridge Omission 284+72 - 289+05						
Sta. 289+05 - 326+00	5,396.60	7,390				
Sta. Eq. 326+00 = 1043+44.14						
Sta. 1043+44.14 - 1096+42	7,218.52	10,595.72			33	61.2
R. R. Omission 1096+42 - 1096+70						
Sta. 1096+70 - 1121+64	1,437.68	4,988	44	70	33	61.2
Sta. Eq. 1121+64 = 0+00						
Sta. 0+00 - 132+41.6	7,412.15	26,483	44	70		
Sta. Eq. 132+41.6 = 137+54.9						
Sta. 137+54.9 - 171+90.3	5,234	6,870.80				
Sta. Eq. 171+90.3 - 171+97.7						
Sta. 171+97.7 - 244+62	7,351.30	14,528.60				
TOTAL	45,570	89,110	88	140	66	122.4
	134,680					

PATCHING SCHEDULE			
LOCATION	TYPE 2 SQ YD	TYPE 3 SQ YD	TYPE 4 SQ YD
Sta. 193+74 - MABLE DRIVE	403.2	211.2	32
MABLE DR. - GRIMM RD	118.4		
GRIMM RD - IRON RD	73.6		
IRON RD - REABA RD	44.8		
REABA RD - SHARP RD	77.6		
SHARP RD - MACALLEN LAKE RD	25.6		
MACALLEN LAKE RD - TR 2000E	28.8		
TR 2000E - HUDSON RD			192
TOTAL	772	211	224

SHORT TERM PAVEMENT MARKING	
LOCATION	FEET
Sta. 193+74 to 284+72	830
Sta. 289+05 to 1096+42	818
Sta. 1096+70 to 244+62	2,403
Total	4,051
3 Application (Milled, Binder & Surface)	
3 x 4,051	12,153
TOTAL	12,153

SCHEDULE OF QUANTITIES

F.A.S. RTE.	SECTION	COUNTY	TOTAL SHEETS	SHEET NO.
2466	(11)RS-3	WOODFORD	23	12
FED. ROAD DIST. NO. ILLINOIS FED. AID PROJECT				

TABULATION OF RESURFACING QUANTITIES

LOCATION	TOTAL ROADWAY WIDTH	LENGTH	AREA	HMA SURFACE REMOVAL	TEMPORARY RAMP	HMA SURFACE REMOVAL	POLY BIT MATERIALS	AGGREGATE MATERIALS	P LEVELING BINDER (MM)	HMA SURF CSE	AGGREGATE SHOULDERS	
				BUTT JOINT		1.5 IN	PRIME COAT	PRIME COAT	,N50 0.75 IN	MIX D,N50 1.5 IN	TYPE B (WEDGE)	
				SQ YD		TON	TON	TON	TON	LEFT SIDE	RIGHT SIDE	
FT	FT	SQ YD	SQ YD	SQ YD	SQ YD	TON	TON	TON	TON	TON	TON	
STA. 193 + 74 TO 194 + 04	22.00	30.00	73.33	73.33	18.33		0.04	0.15	3.08	6.20	0.43	0.43
STA. 194 + 04 TO 209 + 25	22.00	1521.00	3718.00			3718.00	1.93	7.44	156.16	314.09	21.65	21.65
STA. EQUA. 209+25 = 209+30												
STA. 209 + 30 TO 261 + 39	22.00	5209.00	12733.11			12733.11	6.62	25.47	534.79	1067.73	74.16	74.16
STA. 261 + 39 TO 263 + 99.2	24.00	260.20	693.87			693.87	.36	1.39	29.14	58.29		
STA. EQUA. 263+99.2 = 263+98.8												
STA. 263 + 98.8 TO 272 + 47	24.00	848.2	2261.9			2260.80	1.18	4.52	95	190.00		
STA. 272 + 47 TO 283 + 91.1	22.00	1144.05	2796.57			2797.54	1.45	5.60	117.46	234.91	16.29	16.29
STA. EQUA. 283+91.05 = 283+57.65												
STA. 283 + 57.7 TO 284 + 42	22.00	84.35	206.19			206.19	0.11	0.41	8.66	17.42	1.20	1.20
STA. 284 + 42 TO 284 + 72	22.00	30.00	73.33	73.33	18.33		0.04	0.15	3.08	6.20	0.43	0.43
Bridge Omission 284+72 - 289+05												
STA. 289 + 05 TO 289 + 35	22.00	30.00	73.33	73.33	18.33		0.04	0.15	3.08	6.20	0.43	0.43
STA. 289 + 35 TO 326 + 00	22.00	3665.00	8958.89			8958.89	4.66	17.92	376.27	756.82	52.18	52.18
STA. EQUA. 326+00 = 1043+44.14												
STA. 1043 + 44.1 TO 1096 + 12	22.00	5267.86	12876.99			12876.99	6.70	25.75	540.83	1087.81	74.99	74.99
STA. 1096 + 12 TO 1096 + 42	22.00	30.00	100.22	100.22	18.33		0.05	0.20	4.21	8.45	0.43	0.43
R. R. Omission 1096+42 - 1096+70												
STA. 1096 + 70 TO 1097 + 00	22.00	30.00	100.22	100.22	18.33		0.05	0.20	4.21	8.45	0.43	0.43
STA. 1097 + 00 TO 1121 + 64	22.00	2464.00	6023.11			6023.11	3.13	12.05	252.97	508.82	35.08	35.08
STA. EQUA. 1121+64 - 0+00												
STA. 0 + 00 TO 132 + 42	22.00	13241.50	32368.11			32368.11	16.83	64.74	1363.32	2734.37	188.51	188.51
STA. EQUA. 132+41.6 - 137+54.9												
STA. 137 + 55 TO 171 + 90	22.00	3435.40	8397.64			8397.64	4.37	16.80	353.70	709.41	48.91	48.91
STA. EQUA. 171+90.3 = 171+97.7												
STA. 171 + 98 TO 183 + 08	22.00	1110.30	2714.07			2715.04	1.41	5.43	113.99	227.98	15.81	15.81
STA. 183 + 08 TO 244 + 32	24.00	6124.00	16330.67			16329.60	8.49	32.66	685.89	1371.78	87.18	87.18
STA. 244 + 32 TO 244 + 62	24.00	30.00	80.00	80.00	20.00		0.04	0.16	3.36	6.76	0.43	0.43
GRAND-TOTAL				500.43	112.65	110,078.89	57.5	221.19	4,649.2	9,321.69	618.54	618.54
											TOTAL	1237.08

SURFACE TYPE	P BIT PR COAT (GAL/SQ YD)	AGG PR COAT (LB/SQ YD)
COLD MILLED SURFACES	0.1	4
EXISTING PAVEMENT	0.05	4
NEW HOT-MIX ASPHALT COURSES	0.03	2

SURFACE TYPE	
HMA SURF. COURSES	112 LB /SQ YD/IN
ALL OTHER HMA	112 LB /SQ YD/IN
AGGREGATE SHOULDERS	2.05 TONS/CUYD

SCHEDULE OF QUANTITIES

F.A.S. RTE.	SECTION	COUNTY	TOTAL SHEETS	SHEET NO.
2466	(11)RS-3	WOODFORD	23	13
FED. ROAD DIST. NO. .		ILLINOIS FED. AID PROJECT		

Sideroads, Entrances, and Mailbox Turnouts

LOCATION	TYPE	Material	LENGTH	AREA	HMA SURF. REMOVAL (BUTT JT.)	TEMP. RAMP	POLY. BIT. MATRLS. PRIME COAT	AGG. PRIME COAT	INCID. HMA 2" SURFACE
STATION			FOOT	SQ. YD.	SQ. YD.	SQ. YD.	TON	TON	TON
199+02 RT	PE	Bit	12	32	32		0.01	0.1	3.58
200+07.6 RT	PE w/MB	Bit	10	45	45		0.02	0.1	5.04
200+07.6 LT	PE	Gravel	12	45.3	45.3		0.02	0.1	5.07
206+94 LT	PE	Gravel	11	38.5	38.5		0.02	0.1	4.31
206+94 RT	MB	Gravel	49	34.4	34.4		0.01	0.1	3.85
212+27 LT	CE	PCC/w Bit	10	73.9	73.9		0.03	0.1	8.28
213+85.4 RT	CR 1425E	Bit	15	40	40	7.22	0.02	0.1	4.48
213+85.4 LT	PE	Bit	10	28.9	28.9		0.01	0.1	3.24
214+38.2 RT	CE	Bit	17	91.6	91.6		0.04	0.2	10.26
214+91 RT	MB	Bit	72	52	52		0.02	0.1	5.82
215+50 RT	CE	Bit	9	24	24		0.01	0.0	2.69
218+60.6 LT	PE	Bit	11	31.8	31.8		0.01	0.1	3.56
219+66.2 RT	CE/MB	Bit	10	59.5	59.5		0.02	0.1	6.66
220+19 LT	PE	Bit	10	23.9	23.9		0.01	0.0	2.68
221+77.4 RT	CE	Bit	11	85.6	85.6		0.03	0.2	9.59
223+35.8 LT	MABLE DR.	Bit	22	114.9	114.9	15	0.05	0.2	12.87
225+99.8 LT	CE	PCC	8	26.2	26.2		0.01	0.1	2.93
227+58.2 RT	CE	PCC	15	101.7	101.7		0.04	0.2	11.39
229+69.4 RT	PE w/MB	Bit	72	52	52		0.02	0.1	5.82
229+69.4 LT	PE w/MB	Bit	72	52	52		0.02	0.1	5.82
231+70 RT	PE	Gravel	33	28.9	28.9		0.01	0.1	3.24
232+80 LT	PE	Bit	37	30.56	30.56		0.01	0.1	3.42
233+00 RT	MB	Bit	72	52	52		0.02	0.1	5.82
236+03 RT	PE w/MB	Bit	10	28.9	28.9		0.01	0.1	3.24
237+08.6 LT	PE	Bit	10	30.6	30.6		0.01	0.1	3.43
239+19.8 LT	PE	Bit	10	30.6	30.6		0.01	0.1	3.43
239+72.6 RT	PE w/MB	Bit	72	52	52		0.02	0.1	5.82
239+72.6 LT	PE	Bit	10	31.7	31.7		0.01	0.1	3.55
241+03 LT	PE	Bit	10	26.7	26.7		0.01	0.1	2.99
242+89.4 RT	PE	Bit	10	28.9	28.9		0.01	0.1	3.24
242+89.4 LT	PE	Bit	6	17	17		0.01	0.0	1.9
245+00.6 RT	PE	Bit	10	31.7	31.7		0.01	0.1	3.55
248+70.2 RT	MB	Bit	72	52	52		0.02	0.1	5.82
249+75.8 RT	TR w/MB	Bit	72	52	52		0.02	0.1	5.82
249+75.8 LT	PE	Bit	10	32.22	32.22		0.01	0.1	3.61
255+56.6 RT	MB	Bit	72	52	52		0.02	0.1	5.82
256+62.2 LT	PE	Bit	20	91.11	91.11		0.04	0.2	10.20
257+15 LT	PE	Bit	12	106	106		0.04	0.2	11.87
271+40.2 RT	MB	Bit	72	52	52		0.02	0.1	5.82
271+40.2 LT	PE	Bit	20	84.4	84.4		0.03	0.2	9.45
274+57 LT	FE	Bit	12	32	32		0.01	0.1	3.58
279+32.2 LT	GRIMM RD.	Bit	25	164.61	164.61	21.11	0.07	0.3	18.44
281+96.6 RT	MB	Bit	72	52	52		0.02	0.1	5.82
291+13.2 LT	PE	Bit	24	103	103		0.04	0.2	11.54
291+13.2 RT	PE w/MB	Bit	24	98	98		0.04	0.2	10.98
292+71.6 LT	CE	Bit	25	113.89	113.89		0.05	0.2	12.76
294+82.8 LT	CE	Bit	23	111.56	111.56		0.04	0.2	12.49
297+46.8 LT	FARNEYVILLE	Bit	24	102.67	102.67	10.56	0.04	0.2	11.50
311+19.6 RT	MB	Bit	72	52	52		0.02	0.1	5.82
311+19.6 LT	PE	Bit	10	26.67	26.67		0.01	0.1	2.99
325+98 RT	PE	Bit	10	25	25		0.01	0.1	2.80

SCHEDULE OF QUANTITIES

F.A.S. RTE.	SECTION	COUNTY	TOTAL SHEETS	SHEET NO.
2466	(11)RS-3	WOODFORD	23	14
FED. ROAD DIST. NO. ILLINOIS FED. AID PROJECT				

Sideroads, Entrances, and Mailbox Turnouts

LOCATION	TYPE	Material	LENGTH	AREA	HMA SURF. REMOVAL (BUTT JT.)	TEMP. RAMP	POLY. BIT. MATRLS. PRIME COAT	AGG. PRIME COAT	INCID. HMA 2" SURFACE
STATION			FOOT	SQ. YD.	SQ. YD.	SQ. YD.	TON	TON	TON
1062+95.74 RT	PE	Bit	15	43.33	43.33		0.02	0.1	4.85
1065+59.74 LT	PE	Bit	10	54.44	54.44		0.02	0.1	6.10
1069+29.34 RT	IRON RD.	Bit	25	148.61	148.61	15	0.06	0.3	16.64
1074+57.34 RT	KNAPP DR.	Bit	10	32.2	32.2	15	0.01	0.1	6.93
1074+57.34 LT	KNAPP DR.	Bit	25	191.67	191.67	21.11	0.08	0.4	21.47
1089+35.74 LT	PE	Bit	11	40.33	40.33		0.02	0.1	4.52
1091+99.74 RT	PE	Bit	10	30.56	30.56		0.01	0.1	3.42
1093+05.34 LT	CE	Bit	10	32.22	32.22		0.01	0.1	3.61
1099+91.74 LT	REABA	Bit	25	129.17	129.17	13.33	0.05	0.3	14.47
1103+08.54 LT	PE	Bit	10	28.33	28.33		0.01	0.1	3.17
1108+36.54 LT	PE	Bit	20	59.23	59.23		0.02	0.1	6.63
1108+89.34 RT	PE	Bit	21	126.61	126.61		0.05	0.3	14.18
1109+94.94 LT	LAKE PARK	Bit	25	156.94	156.94	17.22	0.06	0.3	17.58
1111+00.54 LT	PE	Bit	16	41.78	41.78		0.02	0.1	4.68
1111+00.54 RT	STEFFEN CT	Bit	25	177.78	177.78	18.89	0.07	0.4	19.91
1112+06.14 RT	MB	Bit	72	52	52		0.02	0.1	5.82
1112+06.14 LT	PE	Bit	16	35.56	35.56		0.01	0.1	3.98
1113+64.54 RT	PE/MB	Bit	10	35	35		0.01	0.1	3.92
1113+64.54 LT	PE	Bit	17	48.17	48.17		0.02	0.1	5.40
1114+17.34 RT	PERRY ST	Bit	20	113.33	113.33	11.11	0.05	0.2	12.69
1114+17.34 LT	PE	PCC	15	35.8	35.8		0.01	0.1	4.01
1114+70.14 LT	PE	Bit	17	62.33	62.33		0.02	0.1	6.98
1115+22.94 RT	PE	Bit	10	55.56	55.56		0.02	0.1	6.22
1116+81.34 RT	MAIN ST.	Bit	19	203.72	203.72	33.33	0.08	0.4	22.82
1116+81.34 LT	PE	Bit	17	82.17	82.17		0.03	0.2	9.20
1117+34.14 LT	PE	Bit	17	55.72	55.72		0.02	0.1	6.24
1117+86.94 RT	PE	Bit	10	33.89	33.89		0.01	0.1	3.80
1119+45.34	PE	Bit	10	33.89	33.89		0.01	0.1	3.80
1119+45.34 RT	MB	Bit	72	52	52		0.02	0.1	5.82
1119+98.14 LT	PE	Bit	10	16.67	16.67		0.01	0.0	1.87
0+00 RT	DETWEILER	Bit	25	168.06	168.06	17.22	0.07	0.3	18.82
0+00 LT	PE	Bit	11	27.5	27.5		0.01	0.1	3.08
1+01.14 RT	MB	Bit	72	52	52		0.02	0.1	5.82
1+01.14 LT	PE	PCC	11	22	22		0.01	0.0	2.46
2+53.94 LT	PE	PCC	11	25.67	25.67		0.01	0.1	2.88
2+53.94 RT	MB	Bit	72	52	52		0.02	0.1	5.82
3+12.34 RT	ATHERTON RD.	Bit	18	78	78	11.67	0.03	0.2	8.74
3+81.94 LT	PE	Bit	11	23.83	23.83		0.01	0.0	2.67
3+81.94 RT	PE	Bit	16	37.33	37.33		0.01	0.1	4.18
4+34.74 LT	PE	Bit	11	22	22		0.01	0.0	2.46
5+40.34 LT	PE	Bit	11	18.33	18.33		0.01	0.0	2.05
5+40.34 RT	CE	Bit	11	65.39	65.39		0.03	0.1	7.32
6+50.74 LT	CE	Bit	11	45.83	45.83		0.02	0.1	5.13
6+50.74 RT	CE	Bit	10	56.67	56.67		0.02	0.1	6.35
7+09.94 LT	CE	Bit	12	46.67	46.67		0.02	0.1	5.23
8+65.54 RT	CE	PCC	10	25	25		0.01	0.1	2.80
13+68.34 LT	CE	Bit	10	47.22	47.22		0.02	0.1	5.29
14+21.14 RT	SHARP RD.	Bit	10	47.22	47.22	19.44	0.02	0.1	5.29
14+21.14 LT	TR 1775E	Bit	30	195	195	17.22	0.08	0.4	21.84
16+32.34 LT	PE	Bit	10	23.89	23.89		0.01	0.0	2.68

SCHEDULE OF QUANTITIES

F.A.S. RTE.	SECTION	COUNTY	TOTAL SHEETS	SHEET NO.
2466	(11)RS-3	WOODFORD	23	15
FED. ROAD DIST. NO. . ILLINOIS FED. AID PROJECT				

Sideroads, Entrances, and Mailbox Turnouts

LOCATION	TYPE	Material	LENGTH	AREA	HMA SURF. REMOVAL (BUTT JT.)	TEMP. RAMP	POLY. BIT. MATRLS. PRIME COAT	AGG. PRIME COAT	INCID. HMA 2" SURFACE
STATION			FOOT	SQ. YD.	SQ. YD.	SQ. YD.	TON	TON	TON
16+85.14 RT	PE	Bit	10	24.44	24.44		0.01	0.0	2.74
38+49.94 RT	TR 1825E	Bit	25	105.56	105.56	11.11	0.04	0.2	11.82
51+17.14 LT	TR 1850E	Bit	6	24.67	24.67	17.22	0.01	0.0	2.76
62+78.74 LT	PE	Bit	10	31.11	31.11		0.01	0.1	3.48
62+78.74 RT	PE	PCC	15	35.8	35.8		0.01	0.1	4.01
79+68.34 RT	CE	PCC	15	35.8	35.8		0.01	0.1	4.01
106+08.34 LT	MACALLEN LAKE RD.	Bit	10	32.22	32.22	13.33	0.01	0.1	3.61
106+08.34 RT	MACALLEN LAKE RD.	Bit	8	36	36	14.44	0.01	0.1	4.03
118+75.54 LT	PE	Bit	11	41.56	41.56		0.02	0.1	4.65
118+75.54 RT	MB	Bit	72	52	52		0.02	0.1	5.82
122+97.94 LT	PE	Bit	10	35.56	35.56		0.01	0.1	3.98
122+97.94 RT	MB	Bit	72	52	52		0.02	0.1	5.82
124+03.54 LT	PE	Bit	10	43.89	43.89		0.02	0.1	4.92
124+03.54 RT	MB	Bit	72	52	52		0.02	0.1	5.82
127+52.02 RT	TR 2000E	Bit	7	43.56	43.56	22.78	0.02	0.1	4.88
128+04.82 LT	PE	Bit	10	23.33	23.33		0.01	0.0	2.61
162+43.24 RT	PE	Bit	10	25	25		0.01	0.1	2.80
166+65.64 LT	PE	Bit	9	23	23		0.01	0.0	2.58
168+54.64 RT	MB	Bit	72	52	52		0.02	0.1	5.82
169+29.64 LT	PE	Bit	10	33.89	33.89		0.01	0.1	3.80
194+18.64 RT	MB	Bit	72	52	52		0.02	0.1	5.82
194+18.64 LT	PE	Bit	10	52.78	52.78		0.02	0.1	5.91
196+29.84 LT	HUDSON RD.	Bit	21	121.34	121.34	16.11	0.05	0.2	13.59
203+69.04 RT	CE	Bit	10	39.44	39.44		0.02	0.1	4.42
212+13.84 RT	TR 100N	Bit	7	23.33	23.33	12.2	0.01	0.0	2.61
GRAND TOTAL				7226.79	7226.79	371.62	2.89	14.45	812.73

SCHEDULE OF QUANTITIES

F.A.S. RTE.	SECTION	COUNTY	TOTAL SHEETS	SHEET NO.
2466	(1)RS-3	WOODFORD	23	16
FED. ROAD DIST. NO.		ILLINOIS	FED. AID PROJECT	

WOODFORD



PROJECT STARTS
STA. 193+74

STA. 187+86.2 (US 150)
STA. 331+37.5 (IL 117)

117

Goodfield

150

Sta. Eq. 283+91.05 BK = 283+57.65 AH

Bridge Omission SN 102-0043
Sta. 284+72 - 289+05

R. R. Omission
Sta. 1096+42 - 1096+70

Sta. Eq. 1121+64 BK = 0+00 AH

Sta. Eq. 132+41.6 BK = 137+54.9 AH

Mable Dr.
CR 1425E

Grimm Rd.

Fameyville

Knappp Rd

Reeba Lake Park

Sharp Rd

TR 1775E

TR 1850E

MaCallen Lake Rd.

Iron Rd

Perry St.
Main St.
Detweiler
Atherion Rd.

Steffen Ct.

TR 1825E

TR 2000E

Hudson Rd.

TR 100N

County Line

Congerville

NW

MCLEAN

PROJECT ENDS
STA. 244+62
(COUNTY LINE
ROAD SIGN)

150

Sta. Eq. 209+25 BK = 209+30 AH

Sta. Eq. 326+00 BK = 1043+44.14 AH

Sta. Eq. 263+99.2 BK = 263+98.8 AH

Sta. Eq. 171+90.3 BK = 171+97.7 AH

TAZEWELL

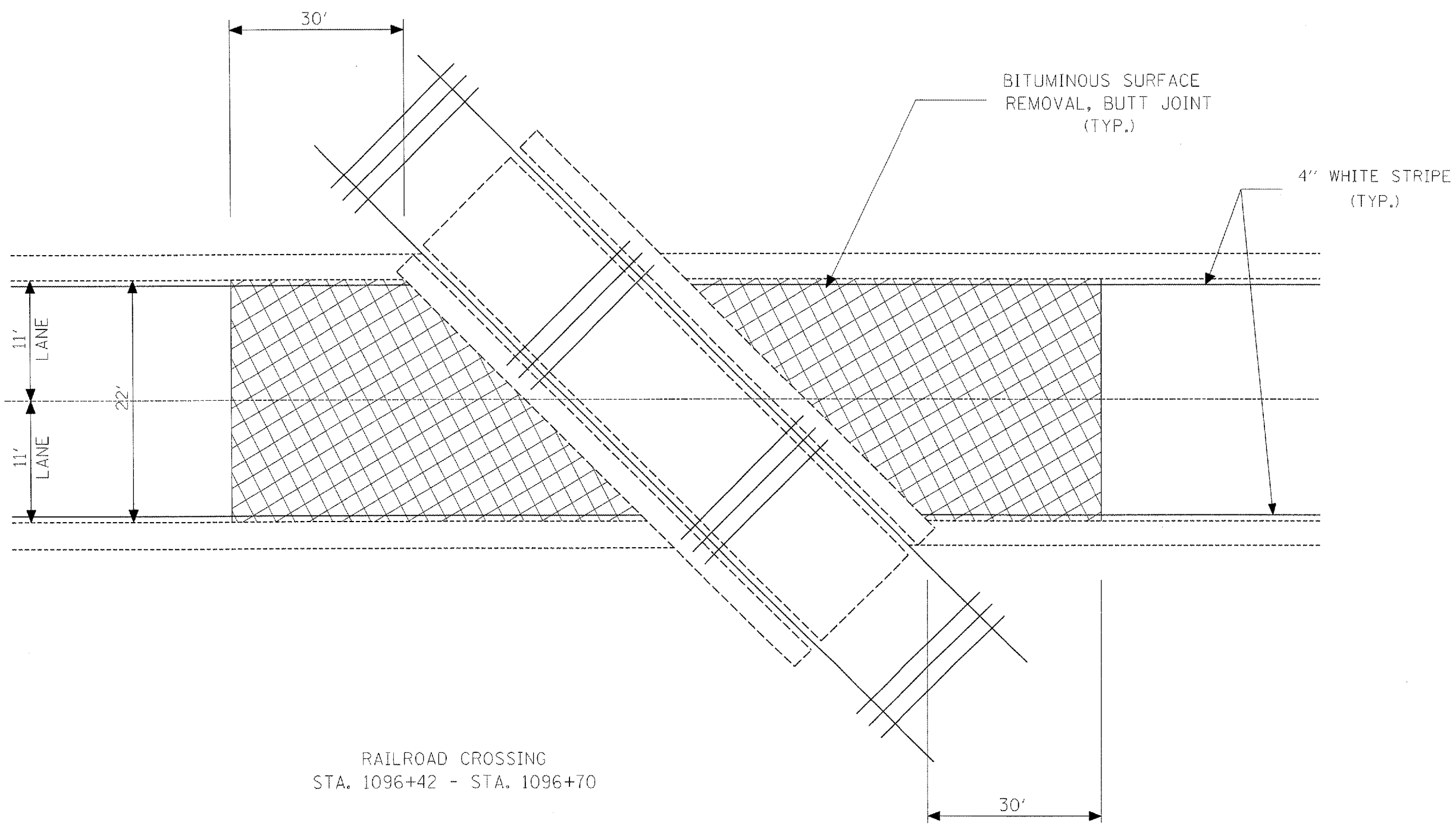
ILLINOIS DEPARTMENT OF TRANSPORTATION

LINE DIAGRAM
US 150 (FAS 2466)
WOODFORD COUNTY

DATE _____ DRAWN BY _____ CHECKED BY _____

F.A.S. RTE.	SECTION	COUNTY	TOTAL SHEETS	SHEET NO.
2466	(11)RS-3	WOODFORD	23	17

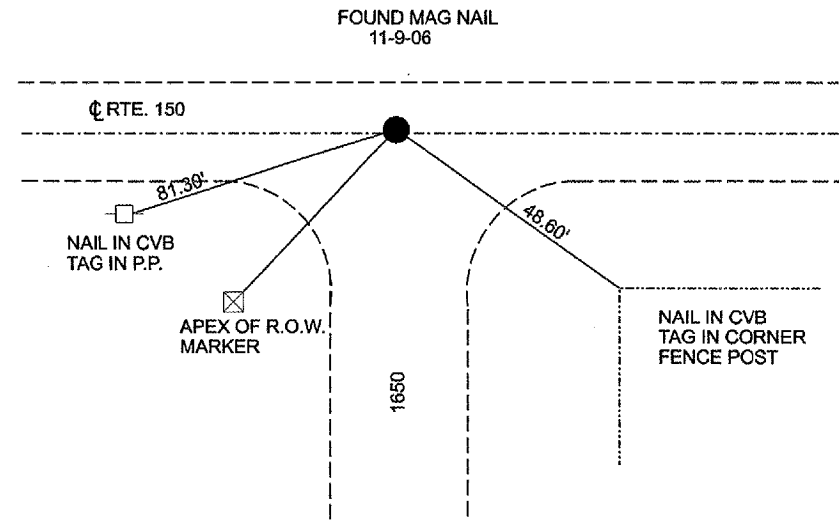
FED. ROAD DIST. NO. ILLINOIS FED. AID PROJECT



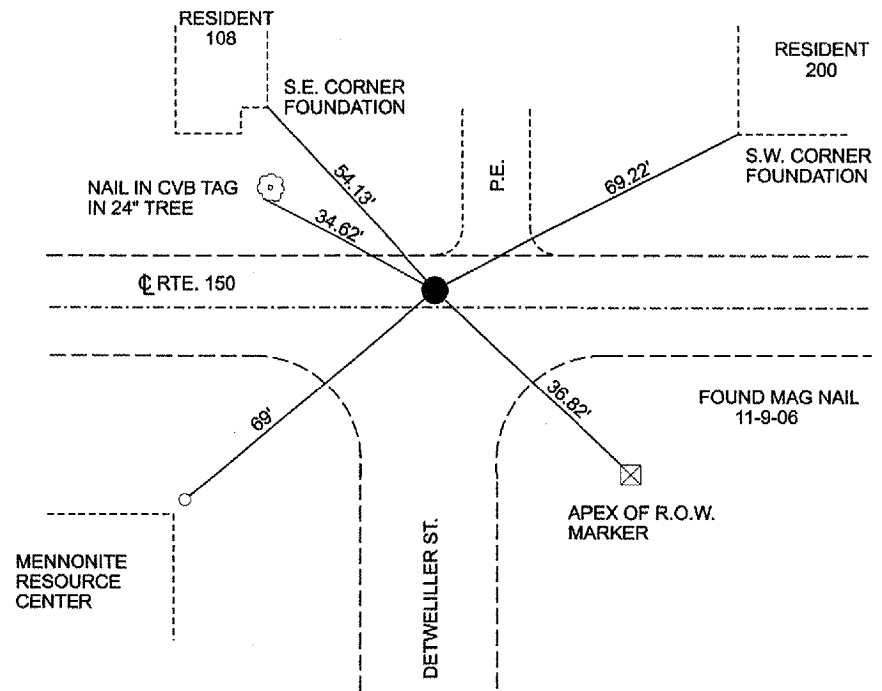
RAILROAD CROSSING
STA. 1096+42 - STA. 1096+70

BUTT JT. DETAIL
AT RR CROSSING

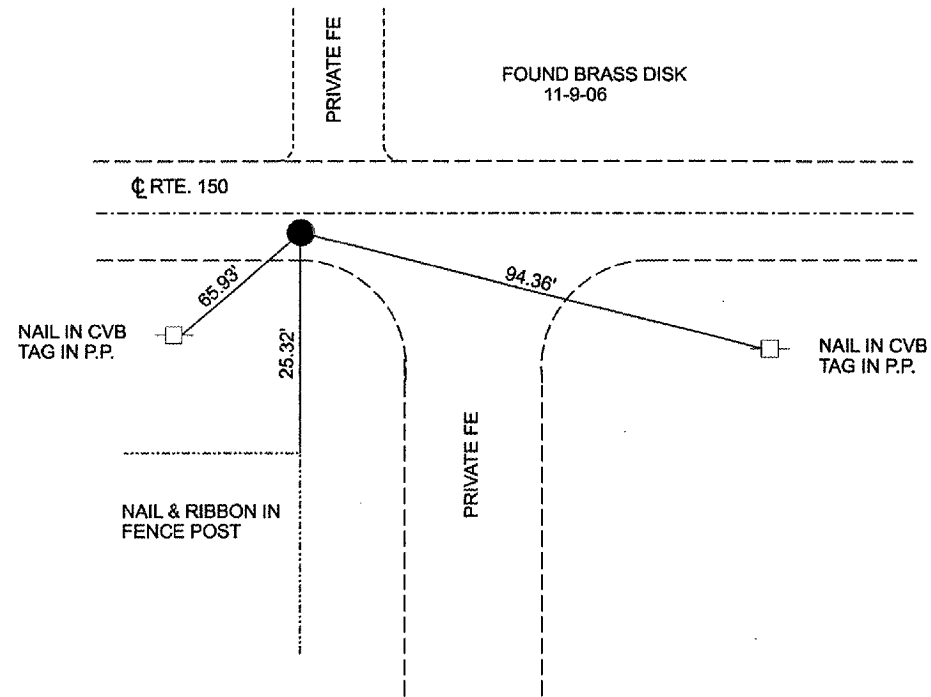
F.A.S. RTE.	SECTION	COUNTY	TOTAL SHEETS	SHEET NO.
2466	(11)RS-3	WOODFORD	23	18
FED. ROAD DIST. NO. ILLINOIS FED. AID PROJECT				



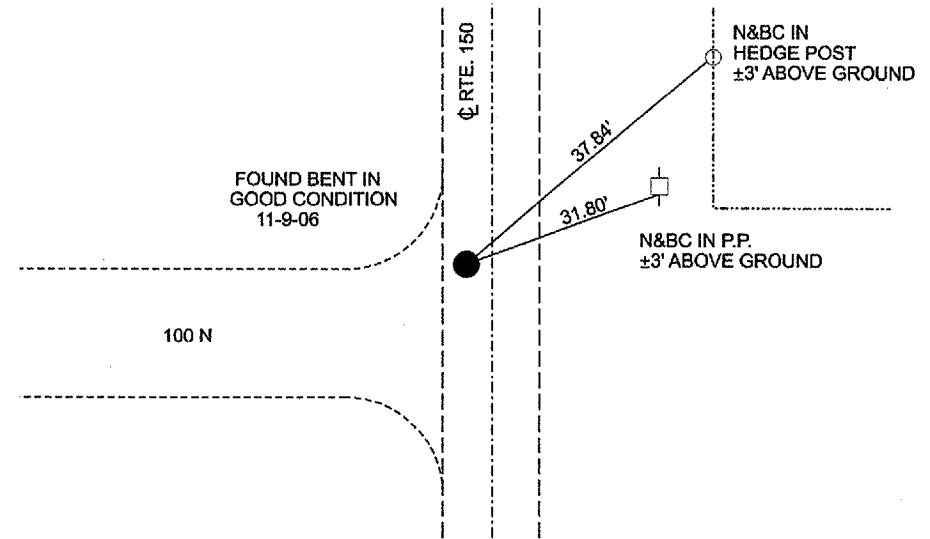
SEC. 21 T 25N R 1W 3RD PRINCIPAL
NORTH QUARTER CORNER OF SEC. 21
FOUND PK NAIL ON ϕ IL. RT. 150



SEC. 22 T 25N R 1W 3RD PRINCIPAL
NORTH QUARTER CORNER OF SEC. 22
 $\pm 3.3'$ NORTH OF ϕ IL. RT. 150



SEC. 23 T 25 R1W 3RD PRINCIPAL
NORTHEAST CORNER SEC. 23
FOUND BRASS DISK $\pm 5'$ SOUTH OF ϕ IL. RT. 150



SEC. 30 T 25N R 1E 3RD PRINCIPAL
NORTH EAST CORNER OF SEC. 30
FOUND PK NAIL $\pm 3.3'$ WEST OF ϕ IL. RT. 150



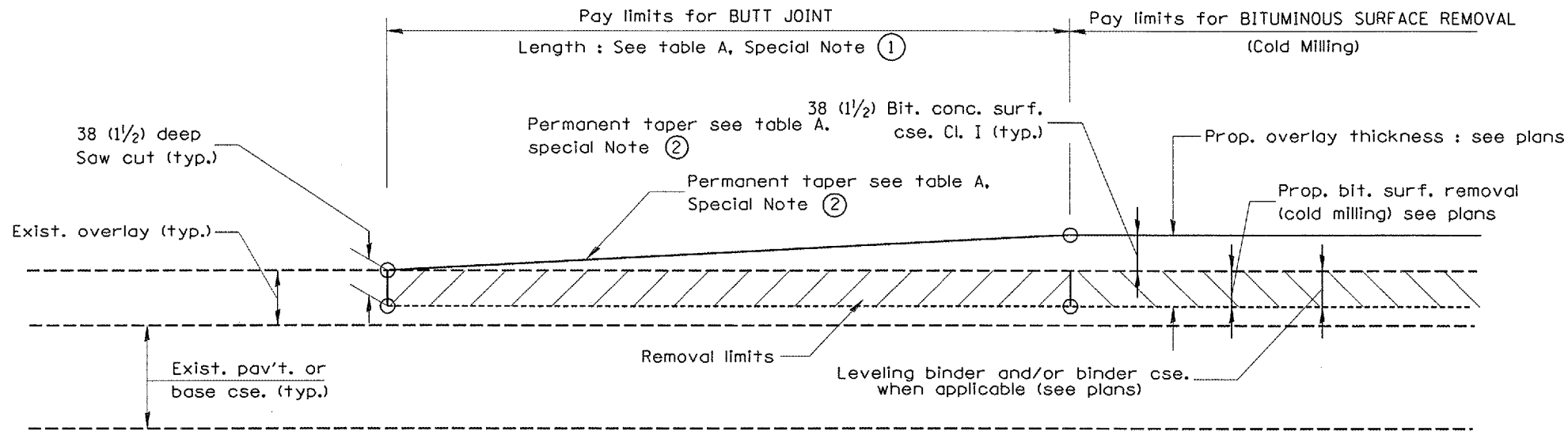
REVISIONS	
NAME	DATE

ILLINOIS DEPARTMENT OF TRANSPORTATION

TIE POINTS
US 150 (FAS 2466)

DRAWN BY
CHECKED BY
DATE

F.A.S. RTE.	SECTION	COUNTY	TOTAL SHEETS	SHEET NO.
2466	(1)RS-1	WOODFORD	23	19



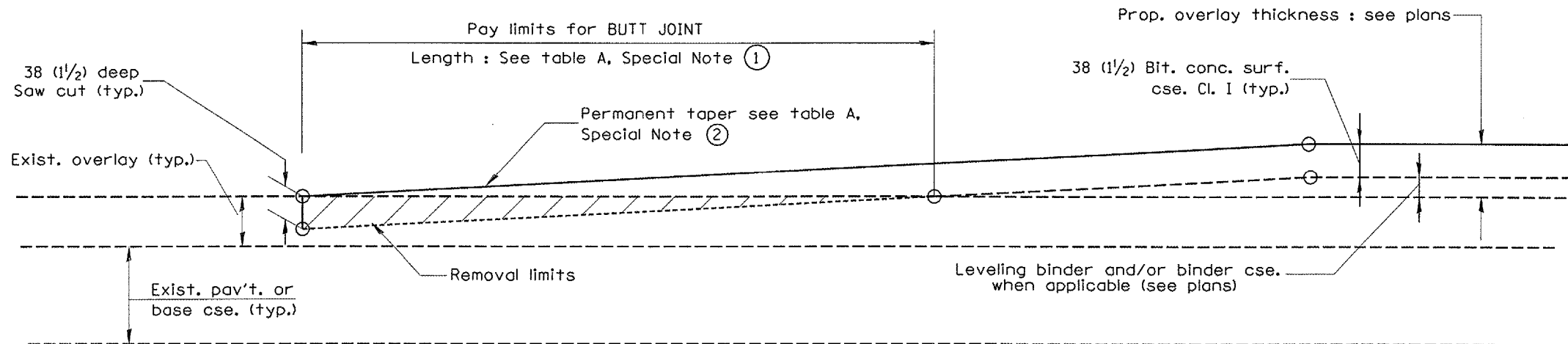
CASE 1 : WITH BITUMINOUS SURFACE REMOVAL (COLD MILLING)

TABLE A
(LENGTHS AND TAPER RATES)

SPECIAL NOTE NUMBER	ELEMENT	MAINLINE INTERSTATES & 4-LANE EXPRESSWAYS	ALL OTHERS
①	LENGTH OF BUTT JOINT	18.0 m(60')	9.0 m(30')
②	PERMANENT TAPER RATE	1:480	1:240
③	TEMPORARY RAMP TAPER RATE	1:80	1:40
④	TEMPORARY RAMP LENGTH	3.0 m(10')	1.5 m(5')
⑤	LENGTH OF BUTT JOINT	3.0 m(10')	3.0 m(10')

GENERAL NOTES

1. The work shall be done in accordance with Article 406.18 and the Special Provision for Butt Joints.
2. The pavement surface to be removed may be either bituminous or P.C. concrete. The work shall be performed in accordance with Article 440.03 and the Special Provisions for Butt Joints.
3. The saw cut joints shall be primed just prior to the placing of bituminous material. The work will be in accordance with the applicable portions of Article 406.06.



CASE 2 : NO BITUMINOUS SURFACE REMOVAL (COLD MILLING)

All dimensions are in millimeters (inches) unless otherwise noted.

ILLINOIS DEPARTMENT OF TRANSPORTATION
DISTRICT CADD STANDARD

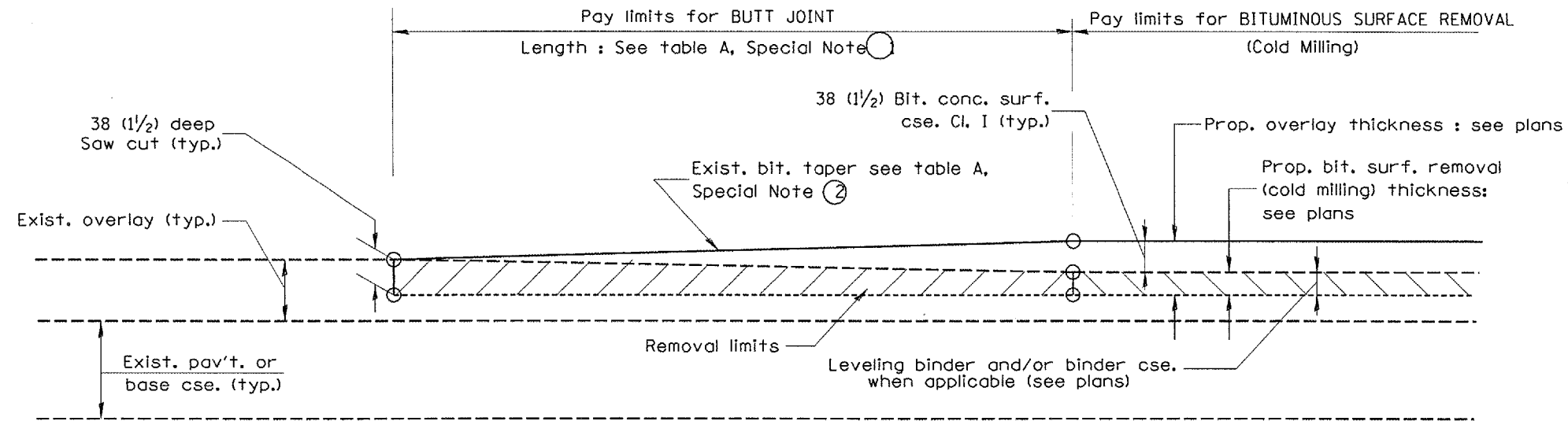
DATE	REVISIONS	BY
1-1-97	RENUM. C-23.01, NEW REVISION BOX	T.P.
4-1-97	CORRECTION TO DEPTH	J.A.
9-15-05	REVISED DESIGNER NOTE	M.M.A.

BUTT JOINTS
CADD STD NO. 406101-D4 SHEET 1 OF 3
SCALE: NOT DRAWN TO SCALE DRAWN BY CADD
DATE **DATE** CHECKED BY

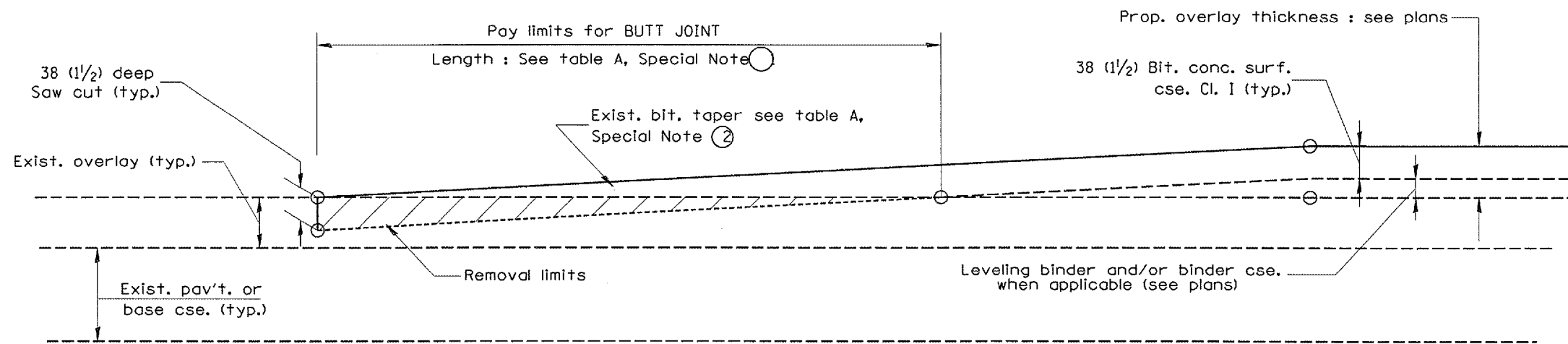
DESIGNER NOTES:
1. Include District Special Provision for Butt Joints & for Bituminous Surface Removal (Cold Milling).
2. The butt joints pay item includes the saw cut & temporary ramp. Payment for the Butt Joint applies whether or not the project features Bituminous Surface Removal (Cold Milling).

\$\$\$DATE\$\$\$

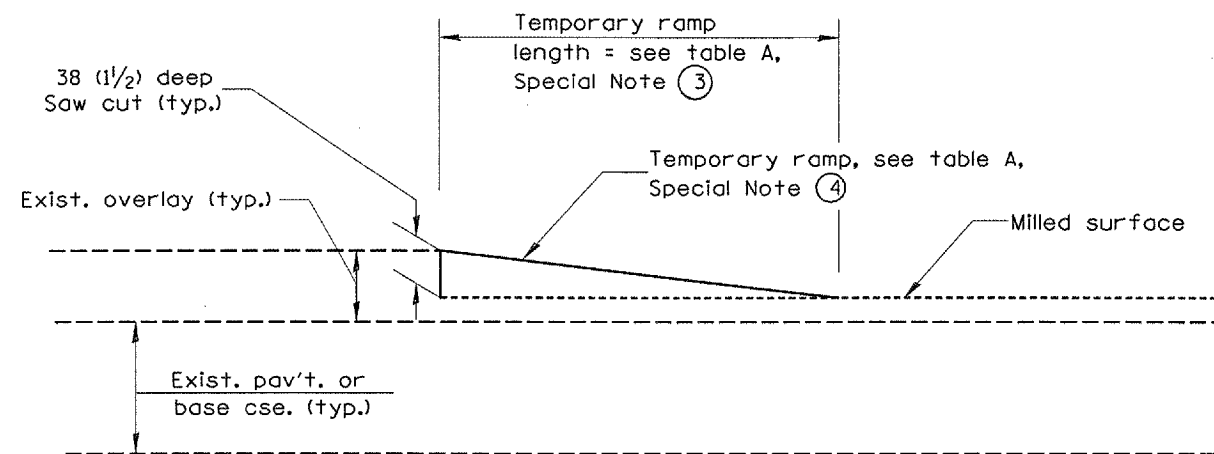
F.A.S. RTE.	SECTION	COUNTY	TOTAL SHEETS	SHEET NO.
2466	111RS-1	WOODFORD	23	20



**CASE 3 : WITH BITUMINOUS SURFACE REMOVAL (COLD MILLING)
TIE-IN TO EXISTING BITUMINOUS TAPER**



**CASE 4 : NO BITUMINOUS SURFACE REMOVAL (COLD MILLING)
TIE-IN TO EXISTING BITUMINOUS TAPER**

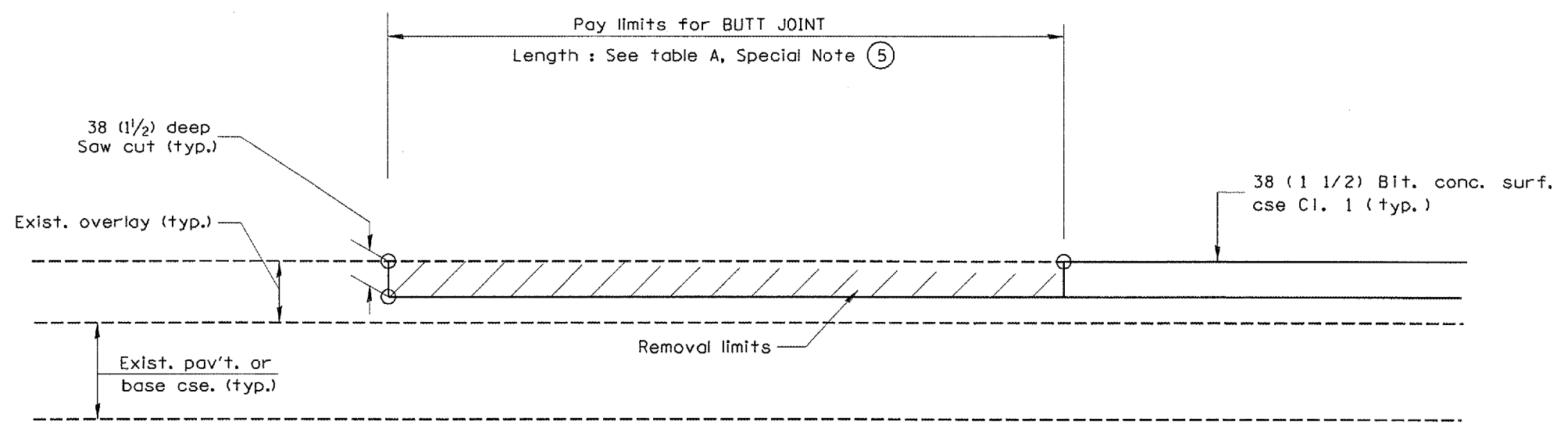


DETAIL TEMPORARY RAMP

All dimensions are in millimeters (inches) unless otherwise noted.

ILLINOIS DEPARTMENT OF TRANSPORTATION	
DISTRICT CADD STANDARD	
BUTT JOINTS	
CADD STD NO. 406101-D4	SHEET 2 OF 3
SCALE: NOT DRAWN TO SCALE	DRAWN BY CADD
	CHECKED BY

F.A.S. RTE.	SECTION	COUNTY	TOTAL SHEETS	SHEET NO.
2466	(1)RS-1	WOODFORD	23	21



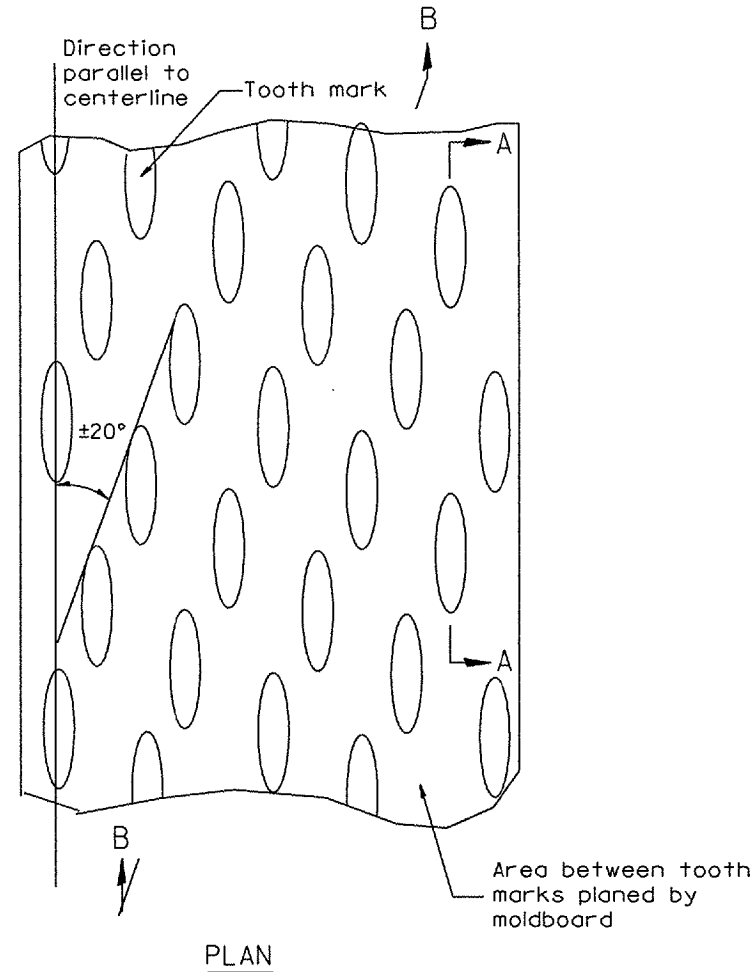
CASE 5 : WITH BITUMINOUS SURFACE REMOVAL (COLD MILLING)
TIE-IN TO EXISTING BITUMINOUS TAPER

All dimensions are in millimeters (inches) unless otherwise noted.

ILLINOIS DEPARTMENT OF TRANSPORTATION	
DISTRICT CADD STANDARD	
BUTT JOINTS	
CADD STD NO. 406101-D4	SHEET 3 OF 3
SCALE: NOT DRAWN TO SCALE	DRAWN BY CADD
	CHECKED BY

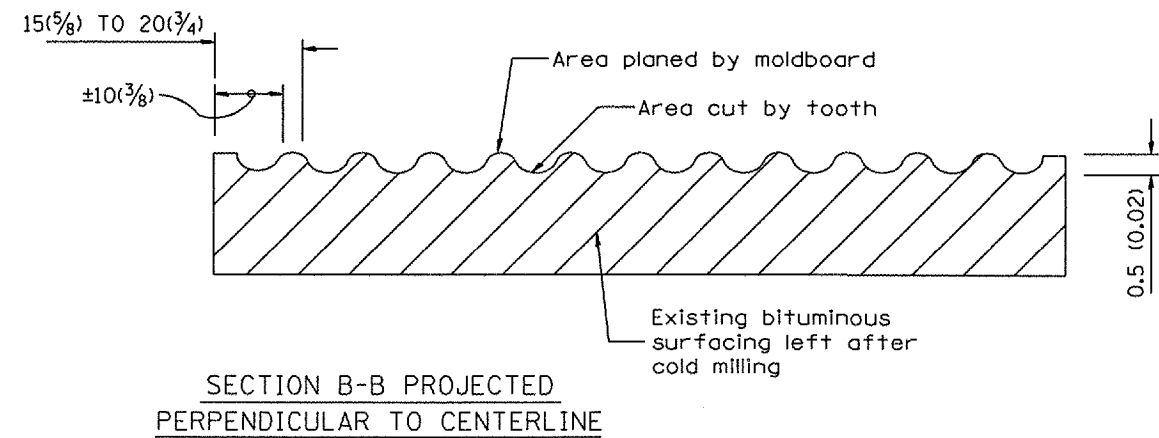
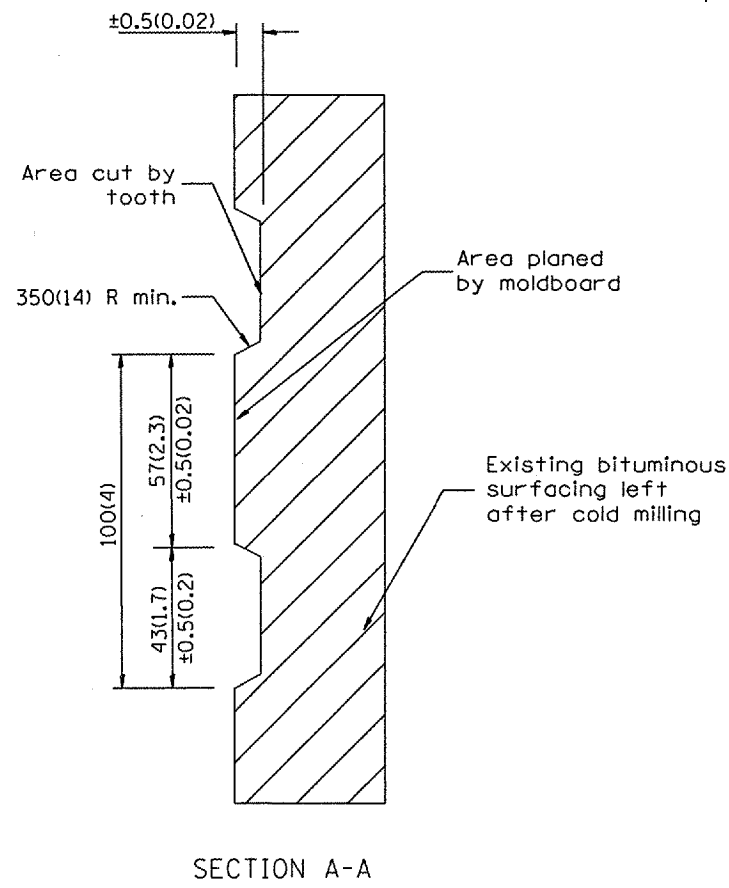
\$\$\$DATE\$\$\$

F.A.S. RTE.	SECTION	COUNTY	TOTAL SHEETS	SHEET NO.
2466	01RS-1	WOODFORD	23	22



General notes:

1. Coldmilling shall consist of two processes: Cutting with carbide teeth mounted on a rotating drum, and planing with a moldboard mounted immediately behind the cutting drum.
2. Other similar patterns will be acceptable if they consist of a smooth, flat, planed surface interspersed with a pattern of discontinuous longitudinal striations.



DESIGNER NOTE
1. INCLUDE DISTRICT SPECIAL PROVISION, IF APPLICABLE.

DATE

All dimensions are in millimeters (inches) unless otherwise noted.

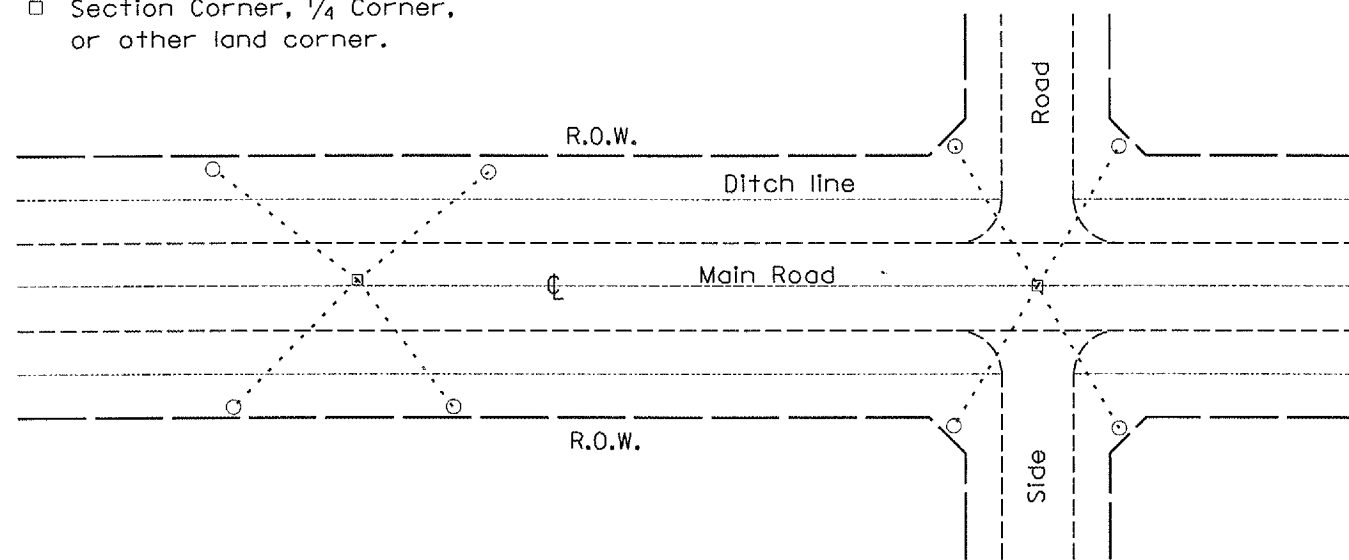
ILLINOIS DEPARTMENT OF TRANSPORTATION	
DISTRICT CADD STANDARD	
BITUMINOUS SURFACE REMOVAL (COLD MILLING)	
CADD STD NO. 440001-D4	
SCALE: NOT DRAWN TO SCALE	DRAWN BY CADD
DATE **DATE**	CHECKED BY

DATE	REVISIONS	BY
1-1-97	RENUM. C-104.01, NEW REVISION BOX	T. P.
4-20-98	REMOVED MILLING DETAIL FROM STD.	J. A.
9-08-98	CORRECT NOTE LEADER PLACEMENT	R. W.

F.A.S. RTE.	SECTION	COUNTY	TOTAL SHEETS	SHEET NO.
2466	(11) R5-3	WOODFORD	23	23

PERMANENT SURVEY TIES

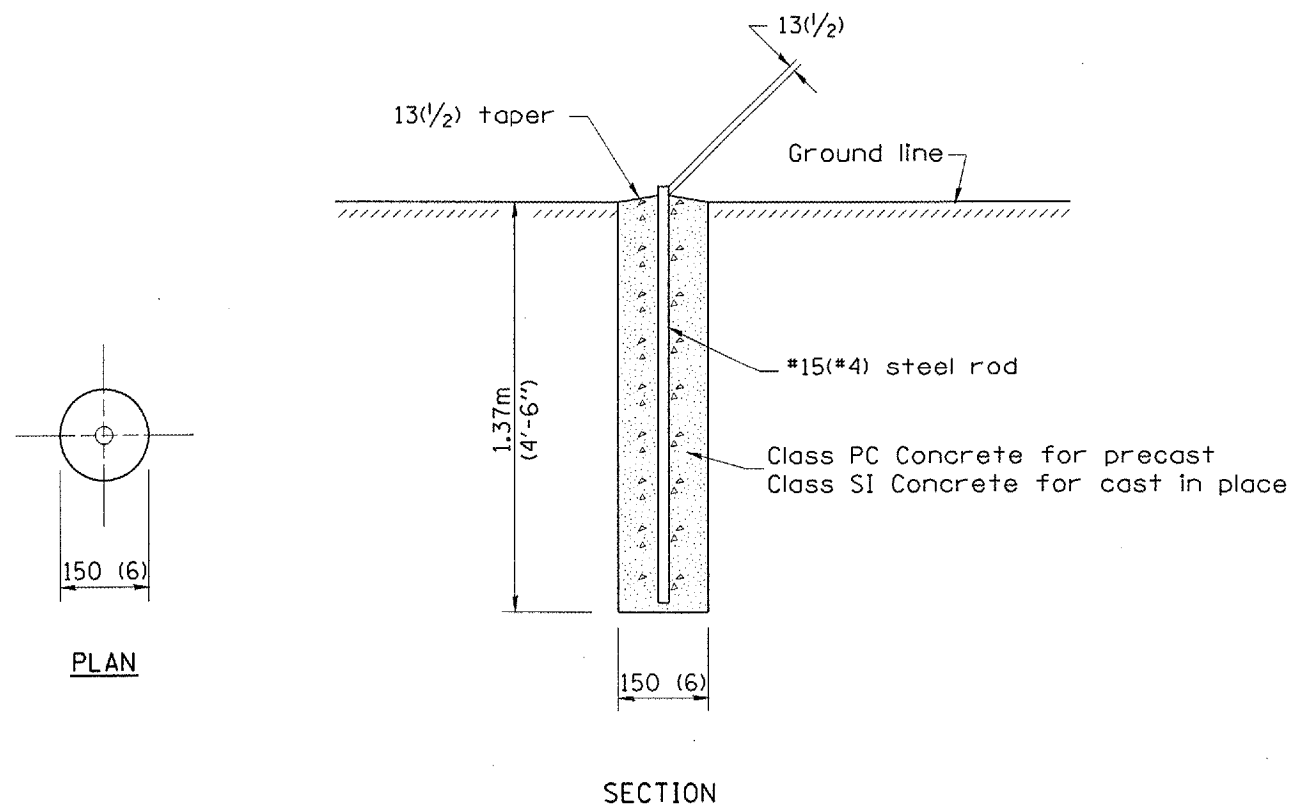
- Permanent Survey Tie
- Section Corner, 1/4 Corner, or other land corner.



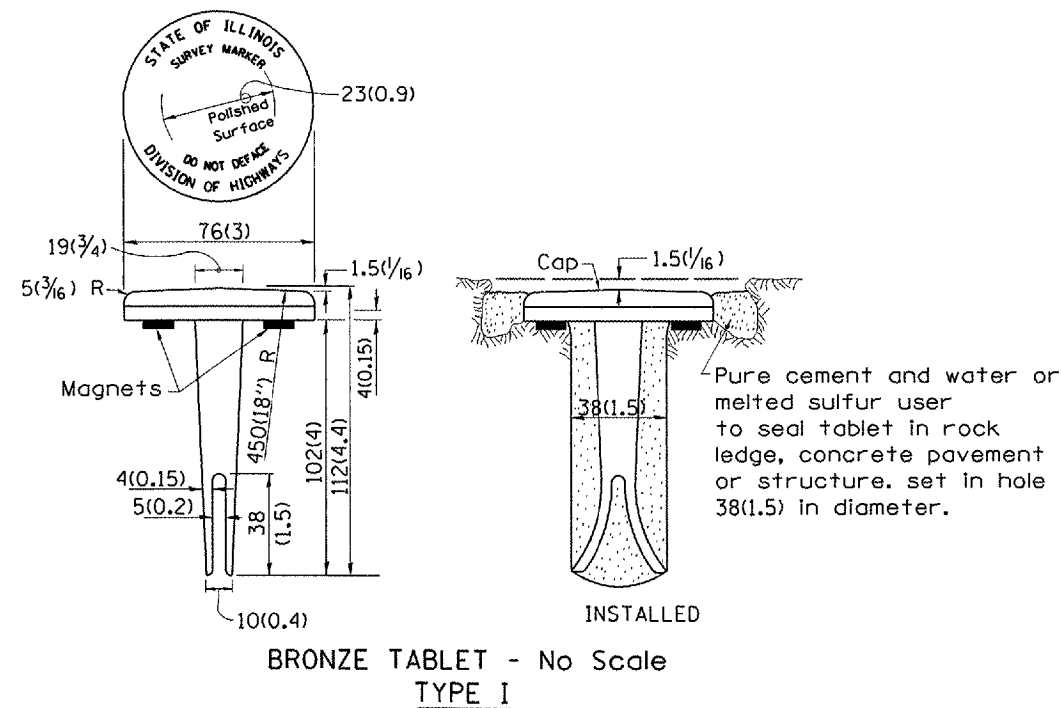
TYPICAL APPLICATION

GENERAL NOTES

1. The marker shall be cast in place of Class SI Concrete.
2. Tie marker shall be installed after the final seeding has been completed unless otherwise specified by the Engineer.
3. The tie distances to the section corner shall be measured and recorded by the IDOT Chief of Surveys.

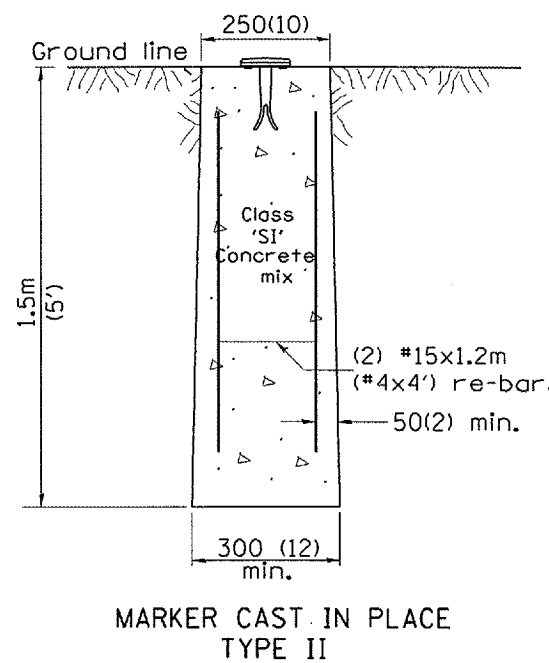


PERMANENT SURVEY MARKERS



GENERAL NOTES

1. All type II markers shall be cast in place, and precast markers will not be allowed.
2. Two permanent magnets, each having a diameter of 19 (3/4) and a thickness of 6 (1/4), or equivalent, shall be attached to the underside of the tablet with an approved epoxy bonding agent.
3. The location of the markers shall be in accordance with the plans in general, the markers will be placed at the P.T.'s and P.C.'s of horizontal curves and spaces along the tangents in a way that a minimum of two markers are always inter-visible, and not to exceed 300m(1000').
4. The markers shall be placed under the direction of the Engineer and shall be installed in a workmanlike manner in order that there will be no further settlement or horizontal shifting. The monuments shall be placed in a way that the survey point will fall within the portion of the plaque provided for that purpose.
5. The project designation, the centerline station, the survey point, and the elevation shall be permanently marked by the use of metal dies after marker has been installed.



All dimensions are in millimeters (inches) unless otherwise noted.

ILLINOIS DEPARTMENT OF TRANSPORTATION		
DISTRICT CADD STANDARD		
PERMANENT SURVEY TIE & PERMANENT SURVEY MARKERS TY.I - TY.II		
CADD STD. NO. 667101-D4		
SCALE: NOT DRAWN TO SCALE	DRAWN BY CADD	
DATE **DATE**	CHECKED BY	

DATE	REVISIONS	BY
1-1-97	RENUM. D-3.01, NEW REVISION BOX	T.P.
	ADD DESIGNER NOTE, REVISED TITLE BOX	
7-7-98	ADD DESIGNER NOTE	J.A.
5-24-06	REMOVED GEN. NOTE UNDER TIES	M.A.

DESIGNER NOTE: 1. ADD DISTRICT SPECIAL PROVISION. 2. MODIFIES STATE STD 667101 TO CALL FOR "BRONZE" TABLET.

DATE