

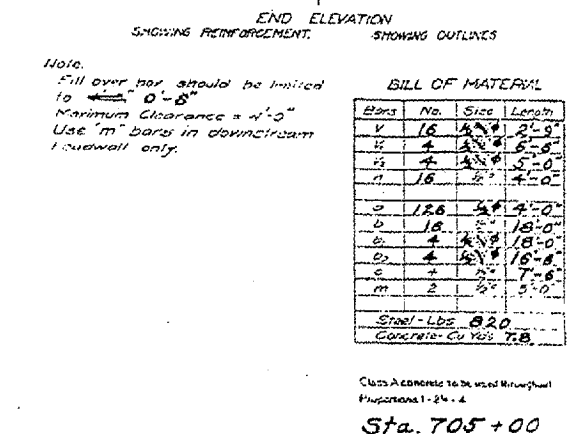
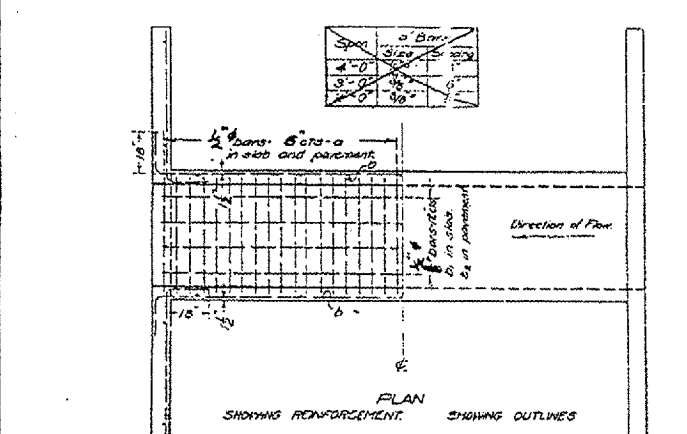
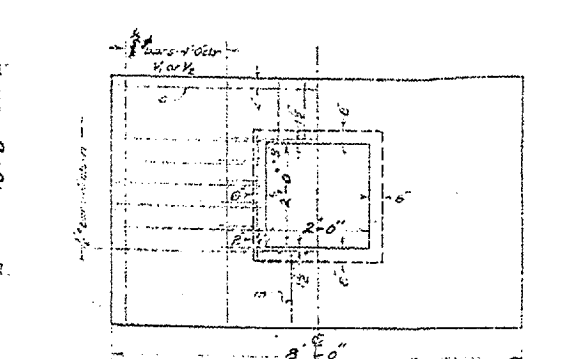
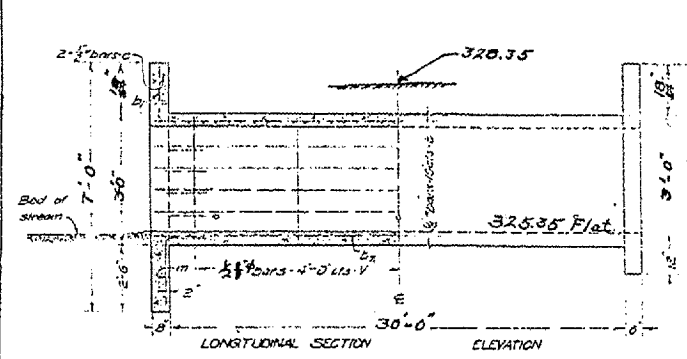
Bill of Material

Bar	No.	Size	Length
V	60	1/2"	11'-0"
W	40	1/2"	11'-0"
X	12	3/8"	23'-6"
Y	24	3/8"	23'-6"
Z	18	3/8"	18'-0"
AA	34	3/8"	27'-6"
AB	14	3/8"	21'-0"
AC	20	3/8"	15'-0"
AD	2	3/8"	5'-0"
Steel - Lbs.			2440
Concrete - Cu Yds.			38.3

Class A concrete to be used throughout
Proportions 1-24-e.

Station 686+50
State Bond Issue
Route 9
Section 36
McDonough County.

APPROVED
PASSED
ENGINEER OF DESIGN.



Bill of Material

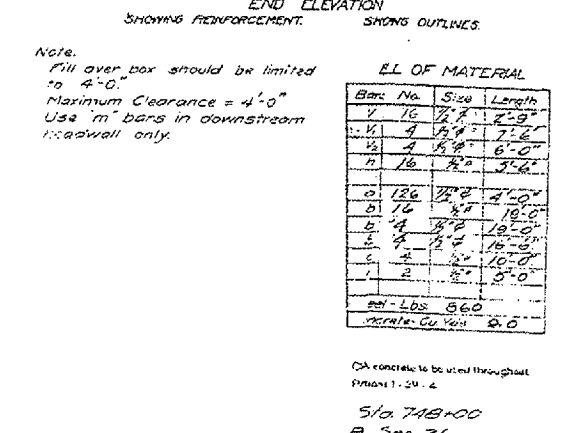
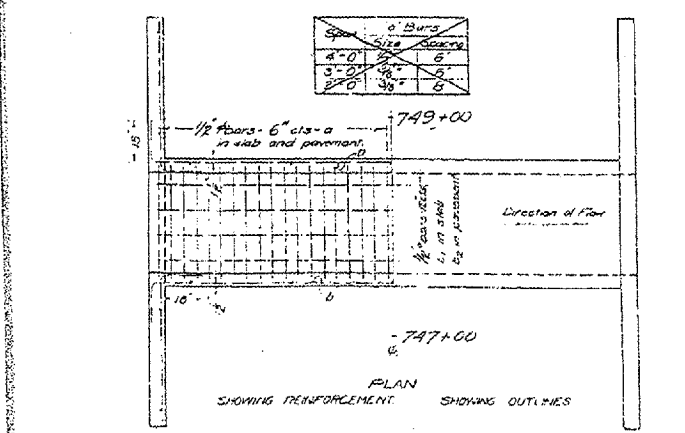
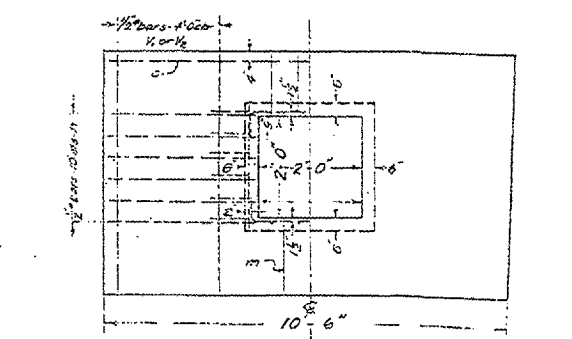
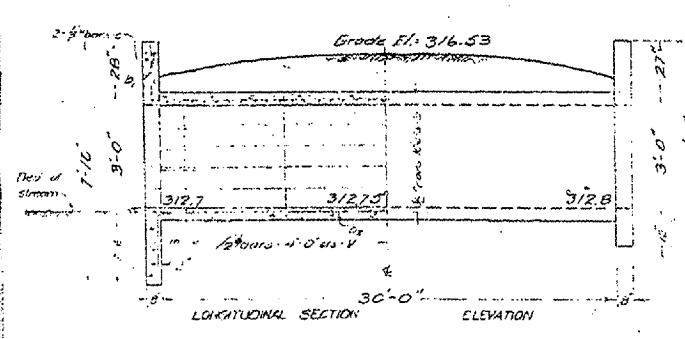
Bar	No.	Size	Length
V	16	1/2"	2'-0"
W	4	3/8"	5'-0"
X	4	3/8"	5'-0"
Y	18	3/8"	4'-0"
Z	18	3/8"	4'-0"
AA	4	3/8"	18'-0"
AB	4	3/8"	18'-0"
AC	4	3/8"	18'-0"
AD	2	3/8"	7'-0"
AE	2	3/8"	5'-0"
Steel - Lbs.			820
Concrete - Cu Yds.			7.8

Note:
All over box should be limited to 4'-0"
Maximum Clearance = 4'-0"
Use 1/2" bars in downstream roadway only.

Class A concrete to be used throughout
Proportions 1-24-e.

Sta. 705+00
State Bond Issue
Route 9
Section 36
McDonough County

APPROVED
PASSED
ENGINEER OF DESIGN.



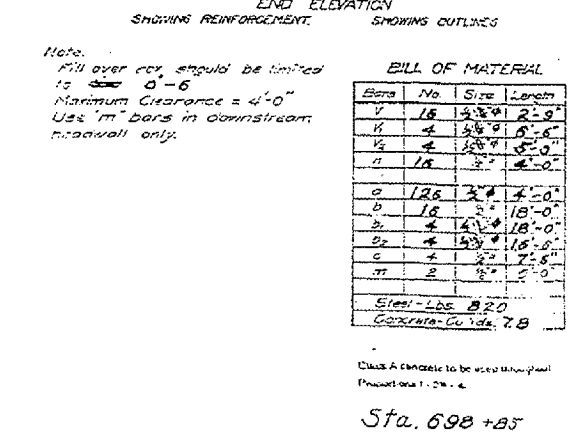
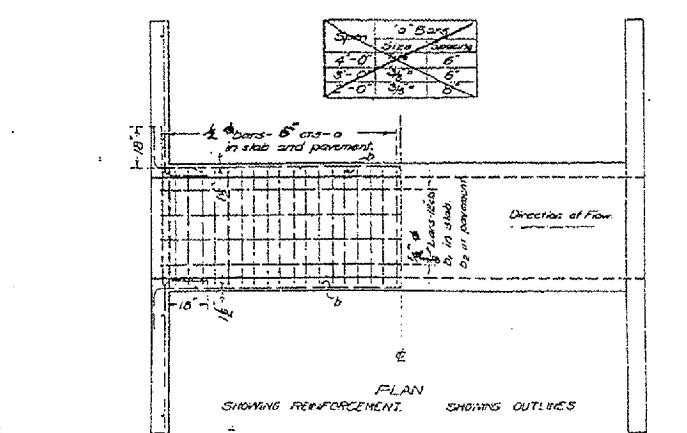
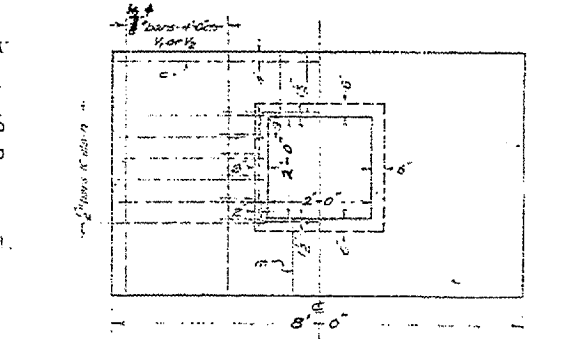
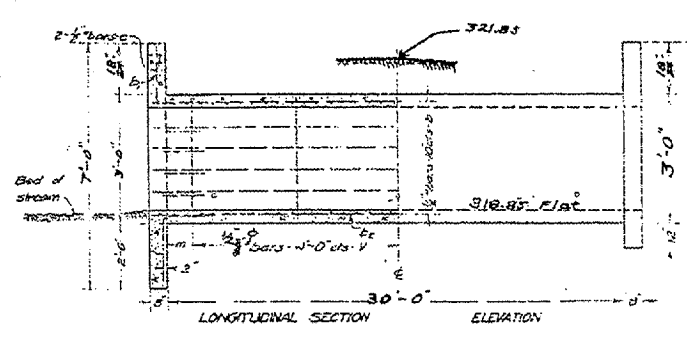
Bill of Material

Bar	No.	Size	Length
V	16	1/2"	2'-0"
W	4	3/8"	5'-0"
X	4	3/8"	5'-0"
Y	18	3/8"	4'-0"
Z	18	3/8"	4'-0"
AA	4	3/8"	18'-0"
AB	4	3/8"	18'-0"
AC	4	3/8"	18'-0"
AD	2	3/8"	7'-0"
AE	2	3/8"	5'-0"
Steel - Lbs.			860
Concrete - Cu Yds.			8.0

Class A concrete to be used throughout
Proportions 1-24-e.

Sta. 747+00
R Sec 36
Mc Bond Issue

APPROVED
PASSED
ENGINEER OF DESIGN.



Bill of Material

Bar	No.	Size	Length
V	16	1/2"	2'-0"
W	4	3/8"	5'-0"
X	4	3/8"	5'-0"
Y	18	3/8"	4'-0"
Z	18	3/8"	4'-0"
AA	4	3/8"	18'-0"
AB	4	3/8"	18'-0"
AC	4	3/8"	18'-0"
AD	2	3/8"	7'-0"
AE	2	3/8"	5'-0"
Steel - Lbs.			820
Concrete - Cu Yds.			7.8

Note:
All over box should be limited to 4'-0"
Maximum Clearance = 4'-0"
Use 1/2" bars in downstream roadway only.

Class A concrete to be used throughout
Proportions 1-24-e.

Sta. 698+85
State Bond Issue

APPROVED
PASSED
ENGINEER OF DESIGN.