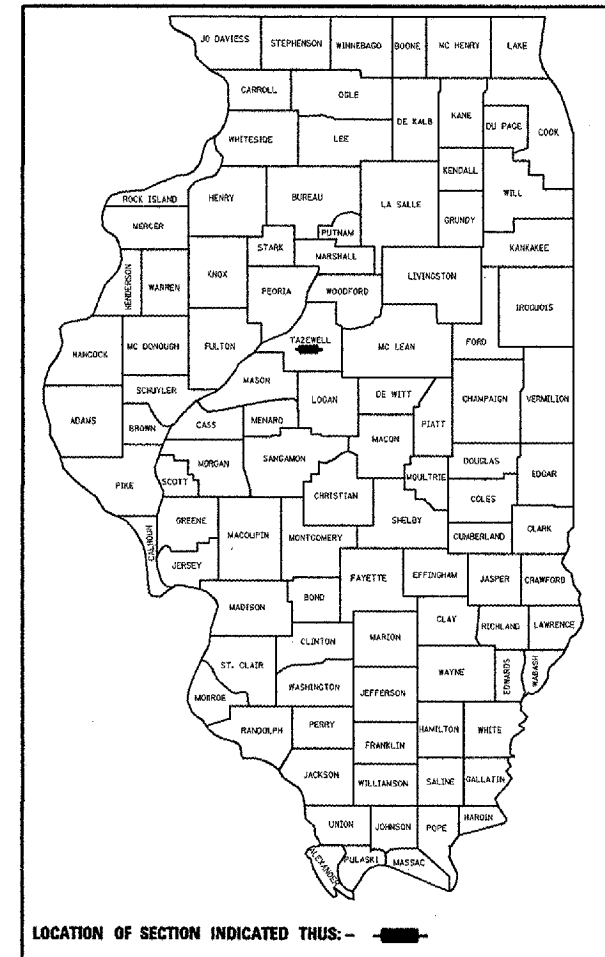


F.A.P. RTE.	SECTION	COUNTY	TOTAL SHEETS	SHEET NO.
701	D4 DRAIN IMP	TAZEWELL	25	1

26

D-94-112-06



PROPOSED IMPROVEMENT
 INCLUDES REMOVING AND REPLACING 2X2 BOX CULVERT WITH 30 INCH DIAMETER PIPE CULVERT. PLUGGING AN 2X2 BOX CULVERT AND GRADING EXISTING DITCHES TO MATCH PROPOSED FLOWLINES.

STATE OF ILLINOIS
 DEPARTMENT OF TRANSPORTATION
 DIVISION OF HIGHWAYS

SUBMITTED 4/9 2007
J.E. C...
 DEPUTY DIRECTOR OF HIGHWAYS, REGION ENGINEER

May 11, 2007
Eric E. ...
 CHIEF ENGINEER OF DESIGN AND ENVIRONMENT

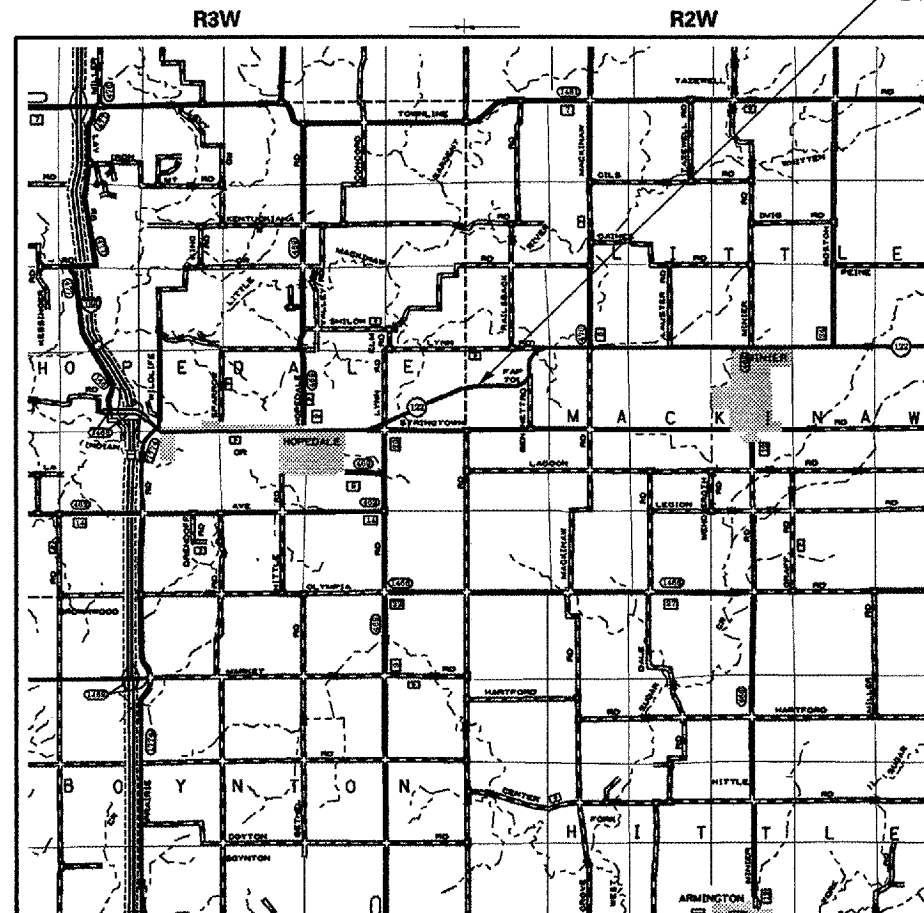
May 11, 2007
Newton R. ...
 DIRECTOR OF HIGHWAYS, CHIEF ENGINEER

**PRINTED BY THE AUTHORITY
 OF THE STATE OF ILLINOIS**

STATE OF ILLINOIS
 DEPARTMENT OF TRANSPORTATION
 DIVISION OF HIGHWAYS
**PROPOSED
 HIGHWAY PLANS**

FAP 701 (IL 122)
 D4 DRAINAGE REPAIR 2007-1
 TAZEWELL COUNTY
 C-94-176-06

IMPROVEMENT LOCATION
 STA 263+00 TO STA 282+00



INDEX OF SHEETS

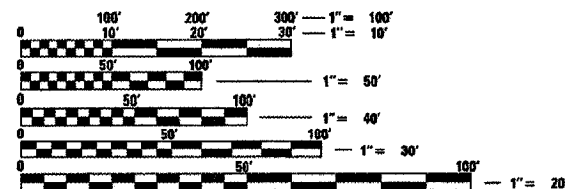
1. COVER SHEET
2. COMMITMENTS
2. GENERAL NOTES
2. JOB SPECIFIC NOTES
3. SUMMARY OF QUANTITIES
4. SCHEDULE OF QUANTITIES
- 5.-12. PLAN & PROFILE
- 13.-14. EROSION CONTROL PLANS
15. PLAN SHEET
- 16.-25. CROSS SECTIONS

LIST OF STANDARDS

- 442201-02
- 542301-01
- 701001-01
- 701006-02
- 701201-02
- 701306-01
- 702001-06

DESIGN DESIGNATION

FAP 701 (IL 122)
 ADT = 1250
 MU = 5.6%



FULL SIZE PLANS HAVE BEEN PREPARED USING STANDARD ENGINEERING SCALES. REDUCED SIZED PLANS WILL NOT CONFORM TO STANDARD SCALES. IN MAKING MEASUREMENTS ON REDUCED PLANS, THE ABOVE SCALES MAY BE USED.

J.U.L.I.E.
 JOINT UTILITY LOCATION INFORMATION FOR EXCAVATION
 1-800-892-0123

NPDES PERMIT REQUIRED

CONTRACT NO. 68643
 CATALOG NO. 033384-00D

GROSS LENGTH OF IMPROVEMENT = 0.36 Miles
NET LENGTH OF IMPROVEMENT = 0.36 Miles

PLOT DATE = 4/30/2007
 FILE NAME = S:\GEN\DRIFT\STD&PLNS\68643\CoverSht thru Schedule of Qty.dgn
 PLOT SCALE = 95.4167' / IN.
 USER NAME = brucebm

F.A.P. RTE.	SECTION	COUNTY	TOTAL SHEETS	SHEET NO.
701	D4 DRAIN IMP	TAZEWELL	27	2
STA.		TO STA.		
FED. ROAD DIST. NO. 4 ILLINOIS FED. AID PROJECT				

JOB SPECIFIC NOTES

UTILITIES - LOCATIONS/INFORMATION ON PLANS

THE LOCATIONS OF EXISTING WATER MAINS, GAS MAINS, SEWERS, ELECTRIC POWER LINES, TELEPHONE LINES AND OTHER UTILITIES AS SHOWN ON THE PLANS ARE BASED ON CAREFUL FIELD INVESTIGATION AND THE BEST INFORMATION AVAILABLE, BUT THEY ARE NOT GUARANTEED. UNLESS ELEVATIONS ARE SHOWN, ALL UTILITY LOCATIONS SHOWN ON THE CROSS SECTIONS ARE BASED ON THE APPROXIMATE DEPTH SUPPLIED BY THE UTILITY COMPANY. IT SHALL BE THE CONTRACTOR'S RESPONSIBILITY TO ASCERTAIN THEIR EXACT LOCATION FROM THE UTILITY COMPANIES AND BY FIELD INSPECTION

ORDERING LENGTH CONFIRMATION - DRAINAGE ITEMS

THE CONTRACTOR SHALL CONSULT WITH THE ENGINEER IN REGARD TO THE EXACT LENGTH OF THE BOX/PIPE CULVERTS, STORM SEWERS, AND/OR PIPE DRAINS REQUIRED PRIOR TO ORDERING THESE ITEMS.

BITUMINOUS CONCRETE MIXTURE REQUIREMENTS

The following mixture requirements are applicable for this project:

MIXTURE USE	CLASS D PATCH
AC/PG:	PG 64-22
RAP% (MAX):	25 %
DESIGN AIR VOIDS:	4.2 @ N des = 50
MIXTURE COMPOSITION	IL 19.0
FRICITION AGGREGATE:	N/A

COMMITMENTS

THE RESIDENT ENGINEER WILL CONTACT THE PROPERTY OWNER WILLIAM BENNET, AT LEAST 2 WEEKS PRIOR TO THE CONTRACTOR ENTERING HIS PROPERTY TO PERFORM ANY WORK.

THE DEPARTMENT WILL COORDINATE FIELD ACCESS FOR FARMING OPERATIONS WITH MR. BENNET.

ENVIRONMENTAL REVIEWS

PRIOR TO THE USE OF ANY PROPOSED BORROW AREAS, USE AREAS (TEMPORARY ACCESS ROADS, DETOURS, RUN-AROUNDS, ETC.) AND/OR WASTE AREAS, THE CONTRACTOR SHALL FILE THE REQUIRED ENVIRONMENTAL RESOURCE REQUEST SURVEYS ACCORDING TO SECTION 107.22 OF THE STANDARD SPECIFICATIONS. THESE SURVEYS ARE REQUIRED IN ORDER FOR THE DEPARTMENT TO CONDUCT CULTURAL AND BIOLOGICAL RESOURCE SURVEYS FOR THE PROPOSED SITE.

PRIOR TO ANY WASTE MATERIALS BEING REMOVED FROM THE CONSTRUCTION SITE THE REQUIRED ENVIRONMENTAL RESOURCE SURVEYS WILL NEED TO BE OBTAINED AND FILED BY THE CONTRACTOR. EXCESS WASTE PRODUCTS REMOVED FROM THE CONSTRUCTION SITE SHALL BE DISPOSED OF AS REQUIRED IN SECTION 202.03 OF THE STANDARD SPECIFICATIONS.

ANY PROTRUDING METAL BARS SHALL BE REMOVED PRIOR TO THE DISPOSAL OF BROKEN CONCRETE AT APPROVED DISPOSAL SITES.

THE REQUIRED ENVIRONMENTAL RESOURCE DOCUMENTATION SHALL INCLUDE THE FOLLOWING:

- BDE FORM 2289 (ENVIRONMENTAL SURVEY REQUEST)
- A LOCATION MAP SHOWING THE SIZE LIMITS AND LOCATION OF THE USE AREA
- SIGNED PROPERTY OWNER AGREEMENT FORM
- COLOR PHOTOGRAPHS DEPICTING THE USE AREA

PLEASE NOTE THAT A MINIMUM OF TWO WEEKS SHALL BE ALLOWED FOR THE DISTRICT TO OBTAIN THE REQUIRED ENVIRONMENTAL CLEARANCES.

PLOT DATE = 5/2/2007
 FILE NAME = S:\GEN\DRRAFT\STD&PLNS\Squad11A\68643\CoverSht thru Schedule of Qty.dgn
 PLOT SCALE = 42.4074' / IN.
 USER NAME = brucebm

REVISIONS		ILLINOIS DEPARTMENT OF TRANSPORTATION
NAME	DATE	
		GENERAL NOTES JOB SPECIFIC NOTES COMMITMENTS
DATE		CHECKED BY

F.A.P. RTE.	SECTION	COUNTY	TOTAL SHEETS	SHEET NO.
701	D4 DRAIN IMP	TAZEWELL	27	3
STA.	TO STA.			
FED. ROAD DIST. NO. 4 ILLINOIS FED. AID PROJECT				

SUMMARY OF QUANTITIES

100%
STATE

CODE NO.	ITEM	UNIT	TOTAL QTY.	ROADWAY MAIN
20200100	EARTH EXCAVATION	CU YD	1261.0	1261.0
20400800	FURNISHED EXCAVATION	CU YD	449	449
20800150	TRENCH BACKFILL	CU YD	21.2	21.2
21101505	TOPSOIL EXCAVATION AND PLACEMENT	CU YD	674	674
21101615	TOPSOIL FURNISH AND PLACE, 4"	SQ YD	5208	5208
25000312	SEEDING CLASS 4A	ACRE	1.08	1.08
25000350	SEEDING CLASS 7	ACRE	1.15	1.15
25000400	NITROGEN FERTILIZER NUTRIENT	POUND	200	200
25000500	PHOSPHOUS FERTILIZER NUTRIENT	POUND	200	200
25000600	POTASSIUM FERTILIZER NUTRIENT	POUND	200	200
28000400	PERIMETER EROSION BARRIER	FOOT	1854	1854
28000500	INLET AND PIPE PROTECTION	EACH	1.0	1.0
44201789	CLASS D PATCHES, TYPE II, 12 IN.	SQ YD	12.3	12.3
54200445	PIPE CULVERT TYPE 1 RCCP 30"	FOOT	44.0	44.0

100%
STATE

CODE NO.	ITEM	UNIT	TOTAL QTY.	ROADWAY MAIN
54223459	REMOVE & RELAY PIPE CULVERT 24"	FOOT	40.0	40.0
54213675	PRECAST ^{REINFORCED} CONCRETE FLARED END SECTION 30"	EACH	2.0	2.0
60102105	PIPE DRAINS 15" (SPECIAL)	FOOT	200	200
67100100	MOBILIZATION	L. SUM	1.0	1.0
70100460	TRAFFIC CONTROL & PROTECTION 701201	L. SUM	1.0	1.0
70100480	TRAFFIC CONTROL & PROTECTION 701306	L. SUM	1.0	1.0
X0323865	FILL EXISTING DRAINAGE STRUCTURE, NO. 1	EACH	1.0	1.0

PLOT DATE = 5/2/2007
 FILE NAME = S:\GEN\DRAWING\STD&PLNS\Squad11A\68643\CoverSht thru Schedule of Qty.dgn
 PLOT SCALE = 42.4074' / IN.
 USER NAME = brucebm

REVISIONS	
NAME	DATE

ILLINOIS DEPARTMENT OF TRANSPORTATION
SUMMARY OF QUANTITIES

DATE _____ CHECKED BY _____

F.A.P. RTE.	SECTION	COUNTY	TOTAL SHEETS	SHEET NO.
701	D4 DRAIN IMP	TAZEWELL	27	4
STA.		TO STA.		
FED. ROAD DIST. NO. 4		ILLINOIS	FED. AID PROJECT	

SCHEDULE OF QUANTITIES

TRENCH BACKFILL	
LOCATION	CU YD
16' Sta. 279+48	21.20
TOTAL = 21.20	

SEEDING CLASS 4A	
LOCATION	ACRE
Lt. Sta. 263+75 to Lt. Sta. 282+00	1.08
TOTAL = 1.08	

NITROGEN FERTILIZER NUTRIENT	
LOCATION	CU YD
Sta. 263+75 to Sta. 282+00	200
TOTAL = 200	

PHOSPHORUS FERTILIZER NUTRIENT	
LOCATION	CU YD
Sta. 263+75 to Sta. 282+00	200
TOTAL = 200	

POTASSIUM FERTILIZER NUTRIENT	
LOCATION	POUND
Sta. 263+75 to Sta. 282+00	200
TOTAL = 200	

PERIMETER EROSION BARRIER	
LOCATION	FOOT
Lt. Sta. 264+15 to Lt. Sta. 279+62	3733.0
TOTAL = 3733.0	

INLET & PIPE PROTECTION	
LOCATION	EACH
30' Lt. Sta. 264+15	1.0
TOTAL = 1.0	

SEEDING CL 7	
LOCATION	ACRE
Rt. Sta. 263+85 - Rt Sta. 279+80	1.15
TOTAL = 1.15	

CLASS D PATCH, TYPE II, 12"	
LOCATION	SQ YD
16' Sta. 279+62	12.3
TOTAL = 12.3	

PIPE CULVERT TY 1 RCCP 30"	
LOCATION	FOOT
22' Sta. 279+48	44.0
TOTAL = 44.0	

REMOVE & RELAY PIPE CULVERT 24"	
LOCATION	FOOT
30' Lt. Sta. 266+95 to Sta. 267+35	40.0
TOTAL = 40.0	

PRECAST REIN. CONCRETE FLARED END SECTION 30"	
LOCATION	EACH
22' Lt. Sta. 279+62	1.0
22' Rt. Sta. 279+62	1.0
TOTAL = 2.0	

FILL EXISTING CULVERTS	
LOCATION	EACH
Lt. Sta. 279+48	1.0
TOTAL = 1.0	

MOBILIZATION	
LOCATION	L. SUM
ENTIRE JOBSITE	1.0
TOTAL = 1.0	

STATION	TOPSOIL FURNISH AND PLACE 4"	TOPSOIL EXCAVATION AND PLACEMENT	EARTH EXCAVATION	EARTH EXCAVATION ADJUSTED FOR 25% SHRINKAGE	EMBANKMENT	FURNISH EXCAVATION
	SQ YD	CU YD	CU YD	CU YD	CU YD	CU YD
Lt Sta. 264-15 - Sta. 282+00	5208				+1864	
Rt Sta. 263+85 - Sta. 279+70		674	1415	-1061		449
TOTAL	5208	674	1415			449

REVISIONS	
NAME	DATE

ILLINOIS DEPARTMENT OF TRANSPORTATION
SCHEDULE OF QUANTITIES

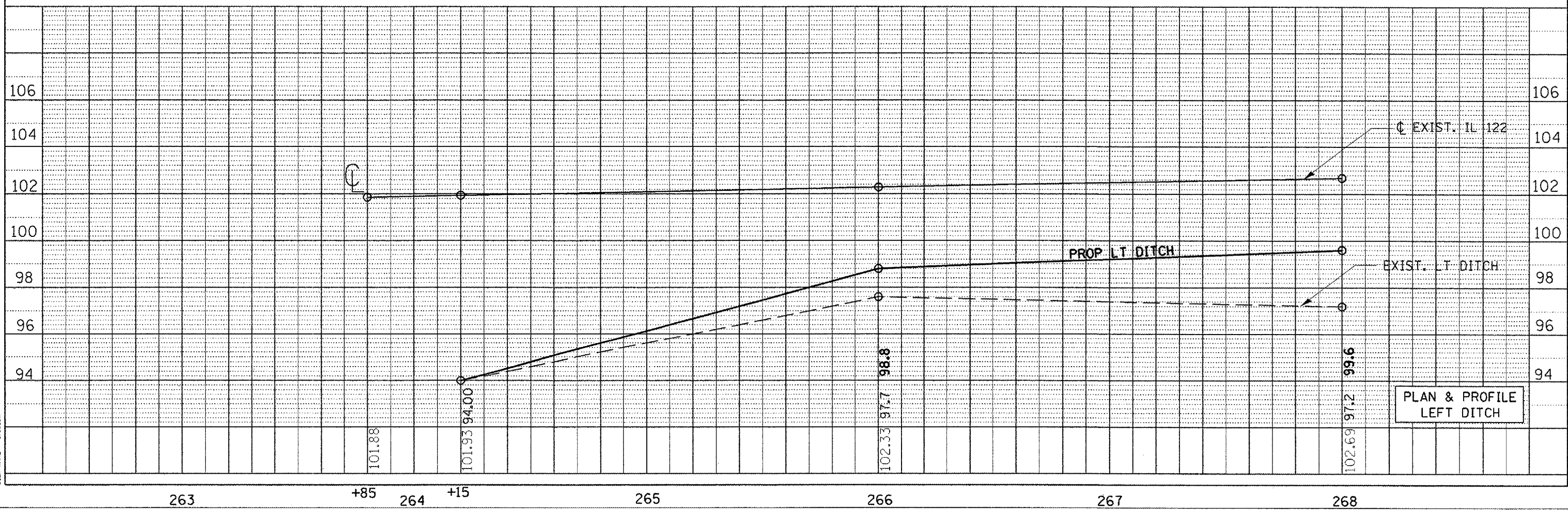
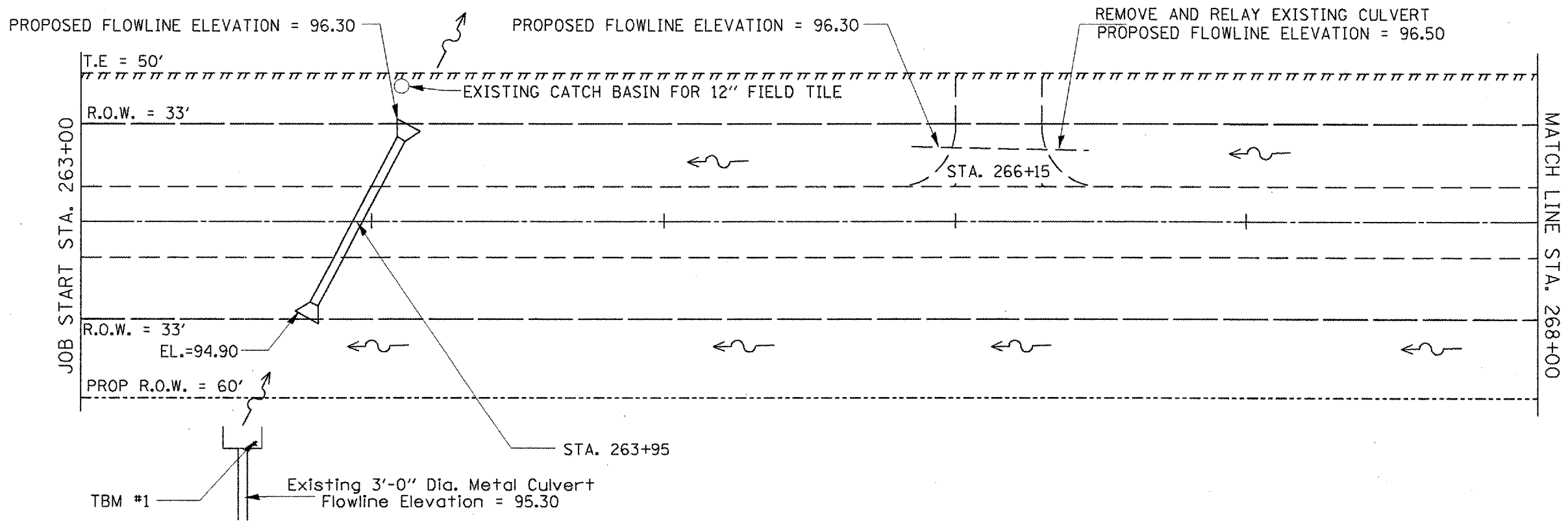
DATE

CHECKED BY

PLOT DATE = 5/2/2007
 FILE NAME = S:\GEN\DRAWING\STD&PLNS\Squad11A\68643\CoverSht thru Schedule of Qty.s.dgn
 PLOT SCALE = 42.4074' / IN.
 USER NAME = brucebm

F.A.P. RTE.	SECTION	COUNTY	TOTAL SHEETS	SHEET NO.
701	D4 DRAIN IMP	TAZEWELL	27	5
STA.		TO STA.		
FED. ROAD DIST. NO. 4 ILLINOIS FED. AID PROJECT				

TBM #1 = Chiseled "X" on top of Culvert Headwall 71Rt. Sta. 263+85 Elevation = 100.00

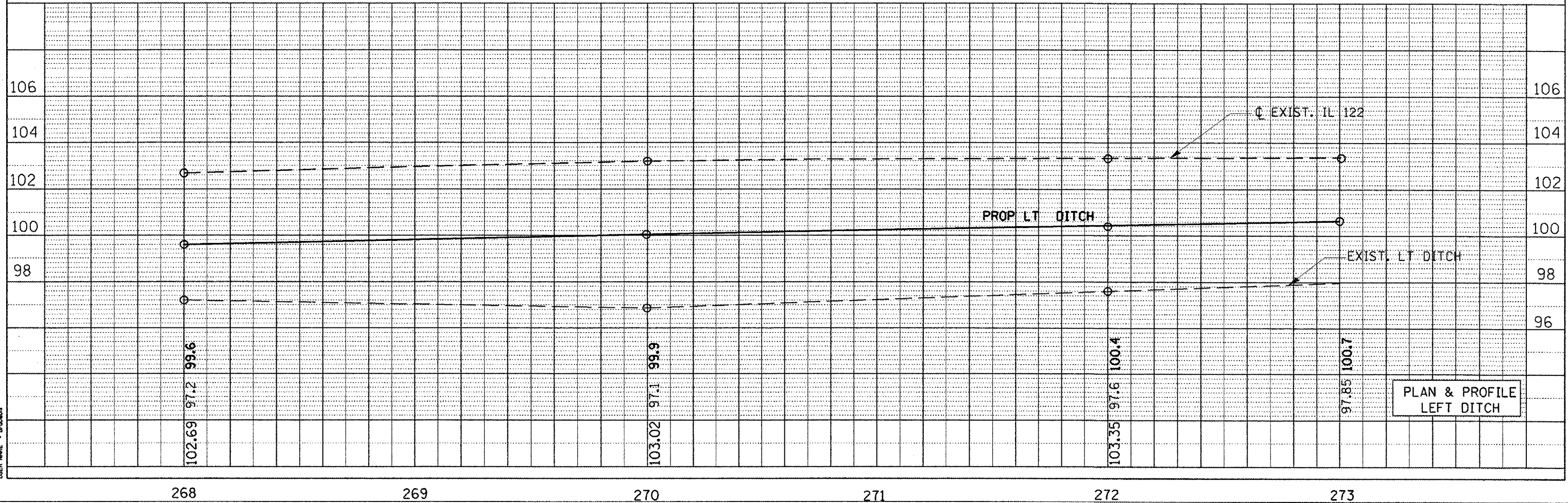
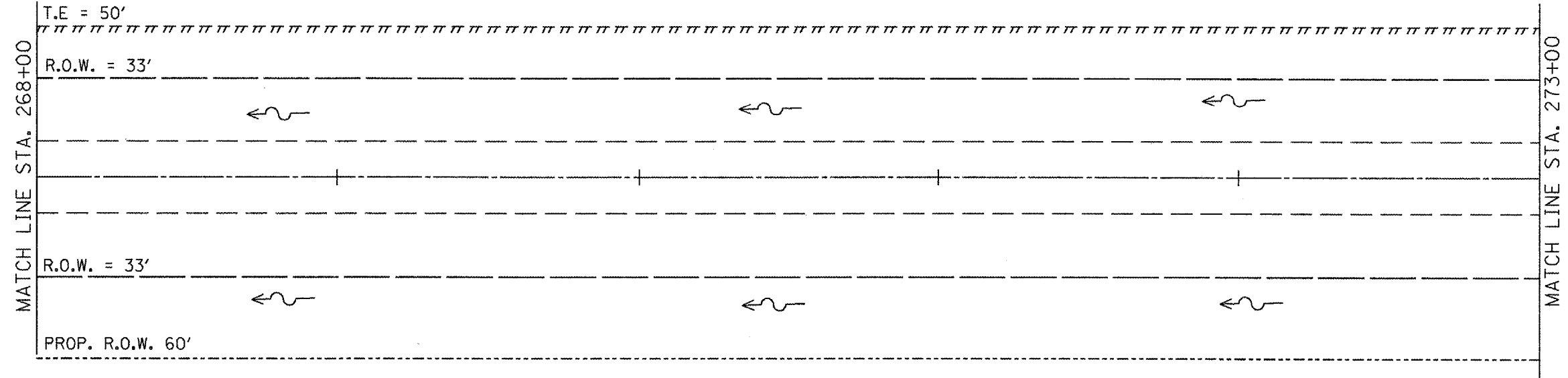


PLAN	DATE
SURVEYED	
PLOTTED	
NOTE BOOK	
NO.	

PROFILE	DATE
SURVEYED	
PLOTTED	
NOTE BOOK	
NO.	

PLOT DATE = 8/2/2007
 FILE NAME = S:\GEN\DRIP\T\ST01PLAN\68643\Plan & Profile.dwg
 PLOT SCALE = 1/2" = 10' / IN.
 USER NAME = broussin

F.A.P. RTE.	SECTION	COUNTY	TOTAL SHEETS	SHEET NO.
701	D4 DRAIN IMP	TAZEWELL	27	6
STA.		TO STA.		
FED. ROAD DIST. NO. 4		ILLINOIS FED. AID PROJECT		



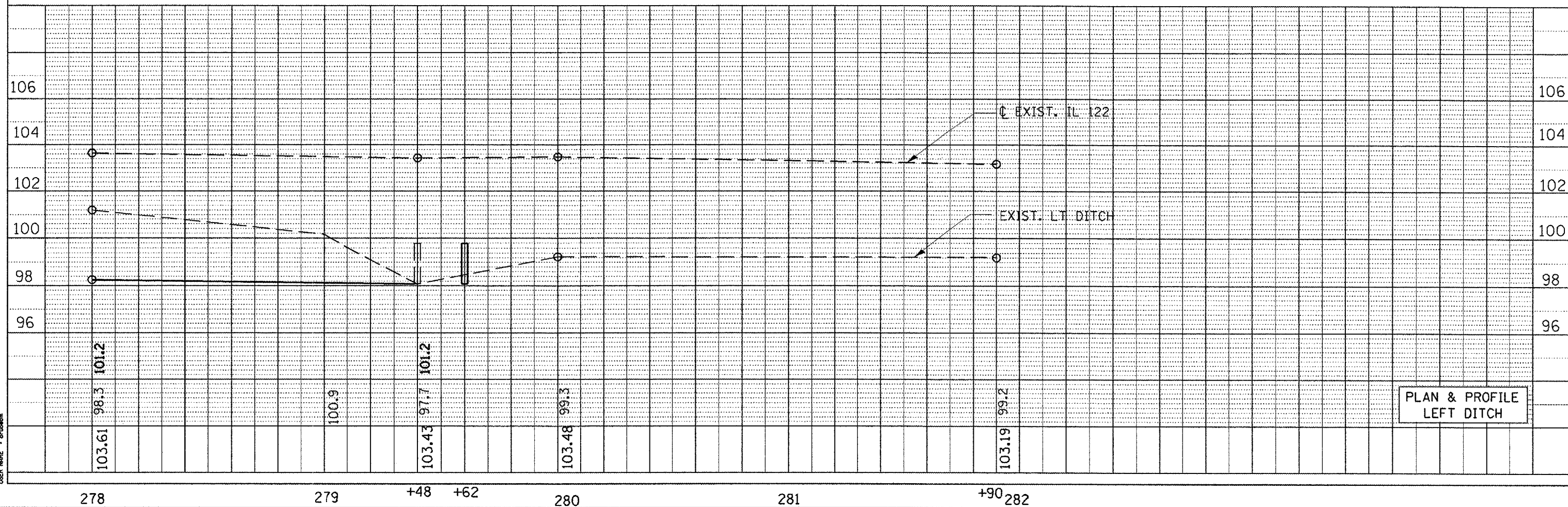
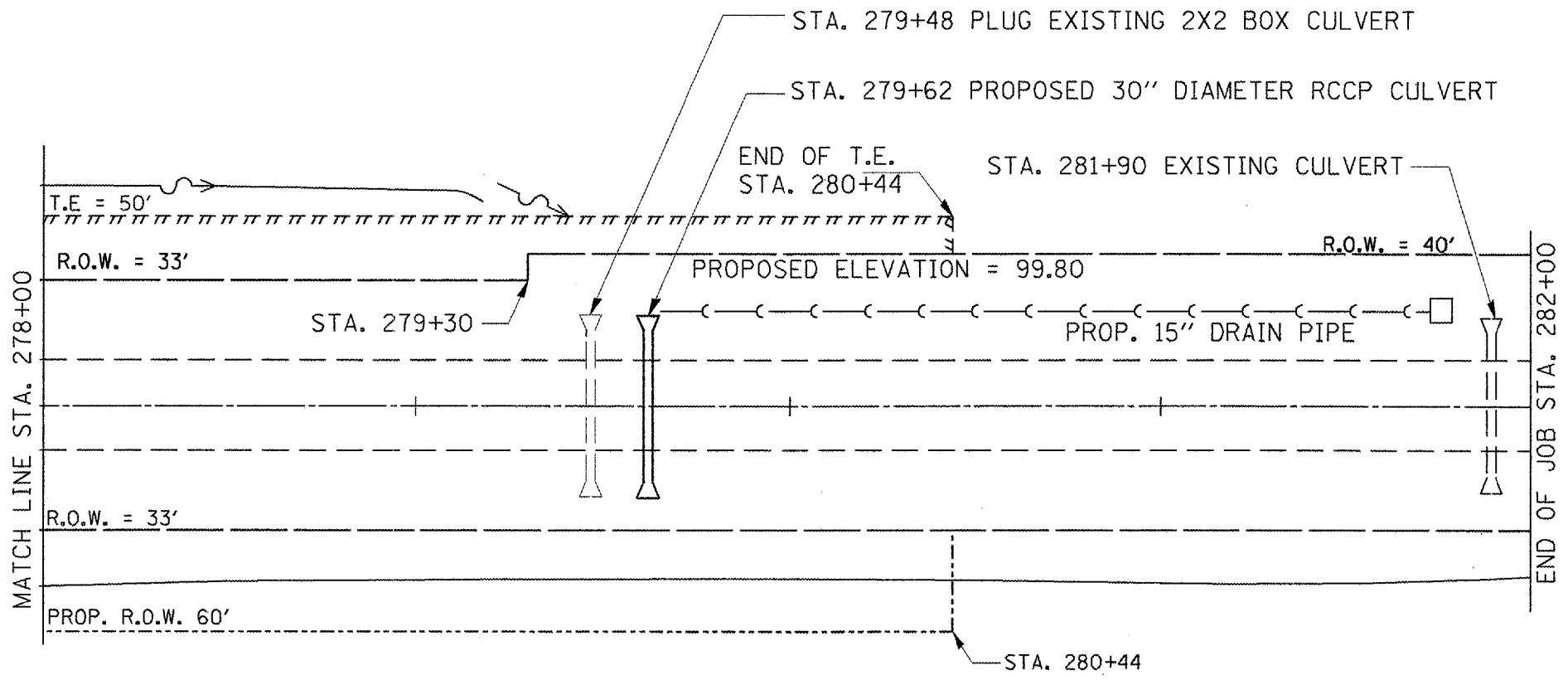
PLAN & PROFILE
LEFT DITCH

PLAN	DATE	BY
REVISIONS		
NOTED		
DATE		
BY		
NO.		

PROFILE	DATE	BY
REVISIONS		
NOTED		
DATE		
BY		
NO.		

PLOT DATE = 5/2/2007
 PLOT SCALE = 42.4874' / IN.
 USER NAME = bruceb

F.A.P. RTE.	SECTION	COUNTY	TOTAL SHEETS	SHEET NO.
701	D4 DRAIN IMP	TAZEWELL	27	8
STA.		TO STA.		
FED. ROAD DIST. NO. 4		ILLINOIS	FED. AID PROJECT	



PLAN & PROFILE
LEFT DITCH

PLAN

DATE	
BY	
DESIGNED	
CHECKED	
IN CHARGE	
NO.	

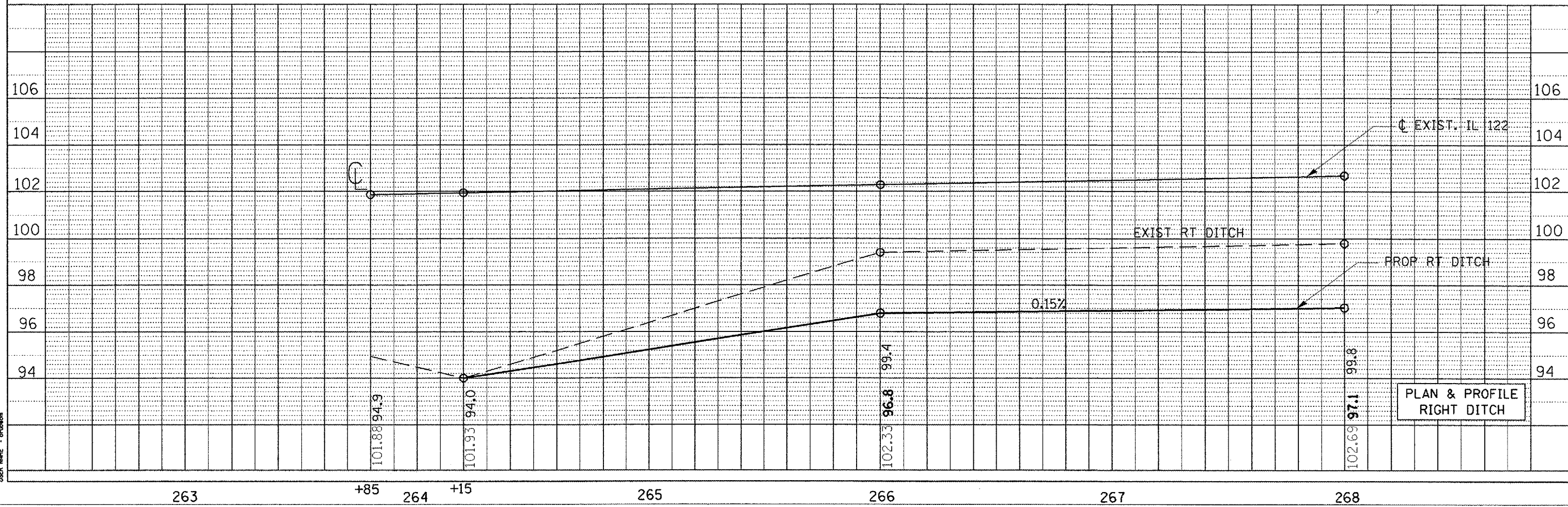
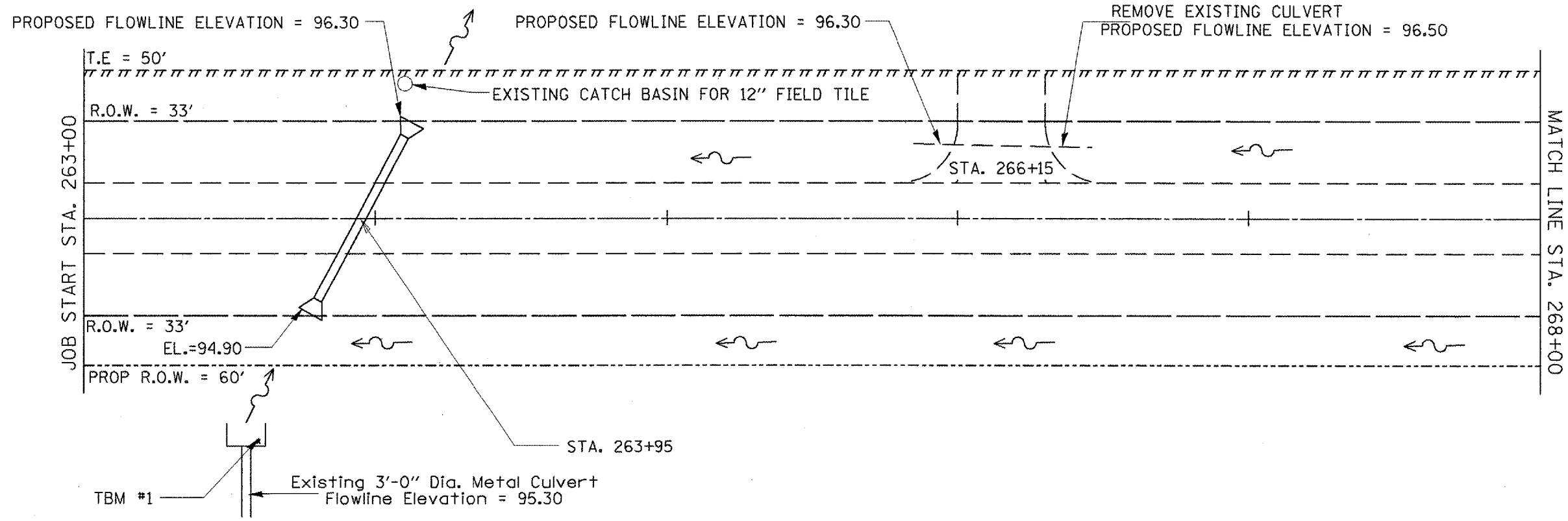
PROFILE

DATE	
BY	
DESIGNED	
CHECKED	
IN CHARGE	
NO.	

PLOT DATE = 5/2/2007
 PLOT SCALE = 4"=100'
 USER NAME = brouder

F.A.P. RTE.	SECTION	COUNTY	TOTAL SHEETS	SHEET NO.
701	D4 DRAIN IMP	TAZEWELL	27	9
STA.		TO STA.		
FED. ROAD DIST. NO. 4 ILLINOIS		FED. AID PROJECT		

TBM #1 = Chiseled "X" on top of Culvert Headwall 71Rt. Sta. 273+85 Elevation = 100.00



PLAN	DATE
REVISIONS	BY
ALIGNED	CHECKED
NOTE BOOK	NO.
DATE	

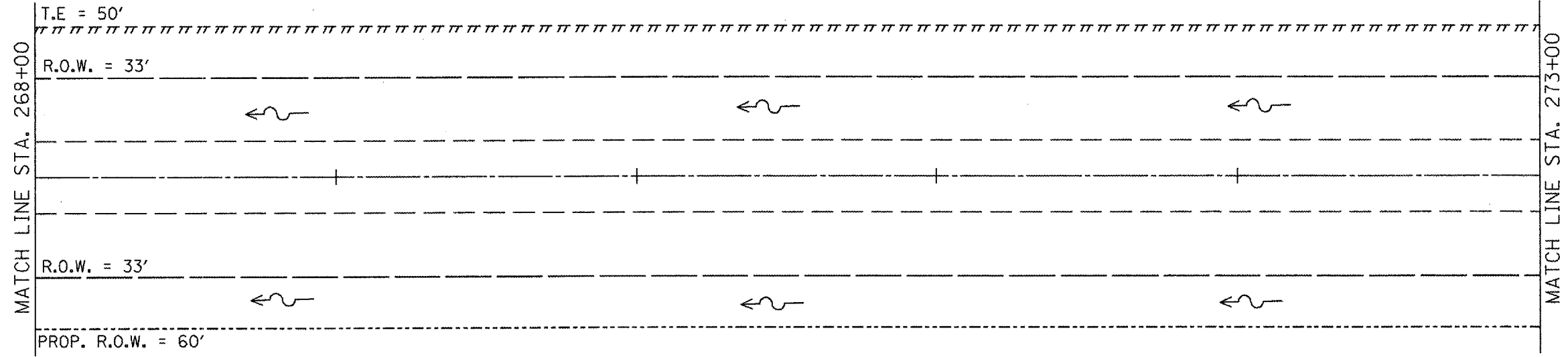
PROFILE	DATE
REVISIONS	BY
GRADES	CHECKED
NOTE BOOK	NO.
DATE	

DATE: 5/2/2007
 USER: bmc
 SCALE: 1" = 40'
 PROJECT: TAZEWELL COUNTY ILLINOIS
 CONTRACT: 68643
 SHEET: 9 OF 27

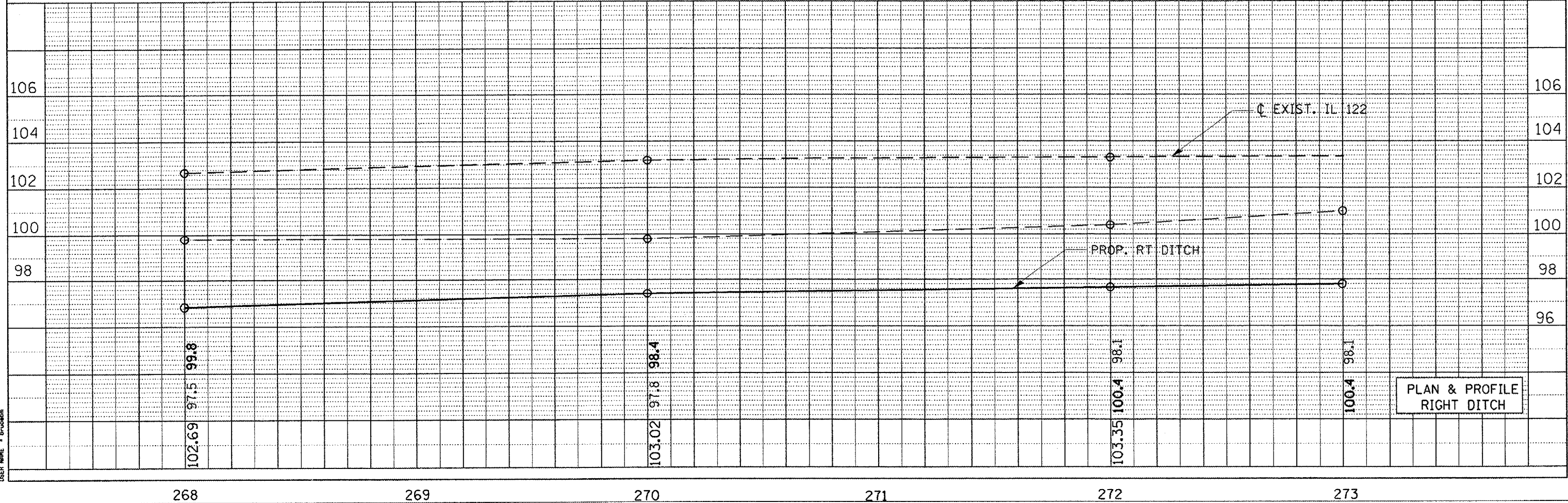
F.A.P. RTE.	SECTION	COUNTY	TOTAL SHEETS	SHEET NO.
701	D4 DRAIN IMP	TAZEWELL	27	10
STA.		TO STA.		
FED. ROAD DIST. NO. 4		ILLINOIS FED. AID PROJECT		



PLAN	REVISIONS	DATE	BY
NOTE BOOK NO.	REVISED		
	PLOTTED		
	PT. OF DAY CHECKED		
	CARD FILE NAME		



PROFILE	REVISIONS	DATE	BY
NOTE BOOK NO.	GRADES CHECKED		
	PLOTTED		
	STRUCTURE NOTATION		



PLOT DATE = 5/27/2007
 PLOT SCALE = 4" = 100'
 USER NAME = bruceb

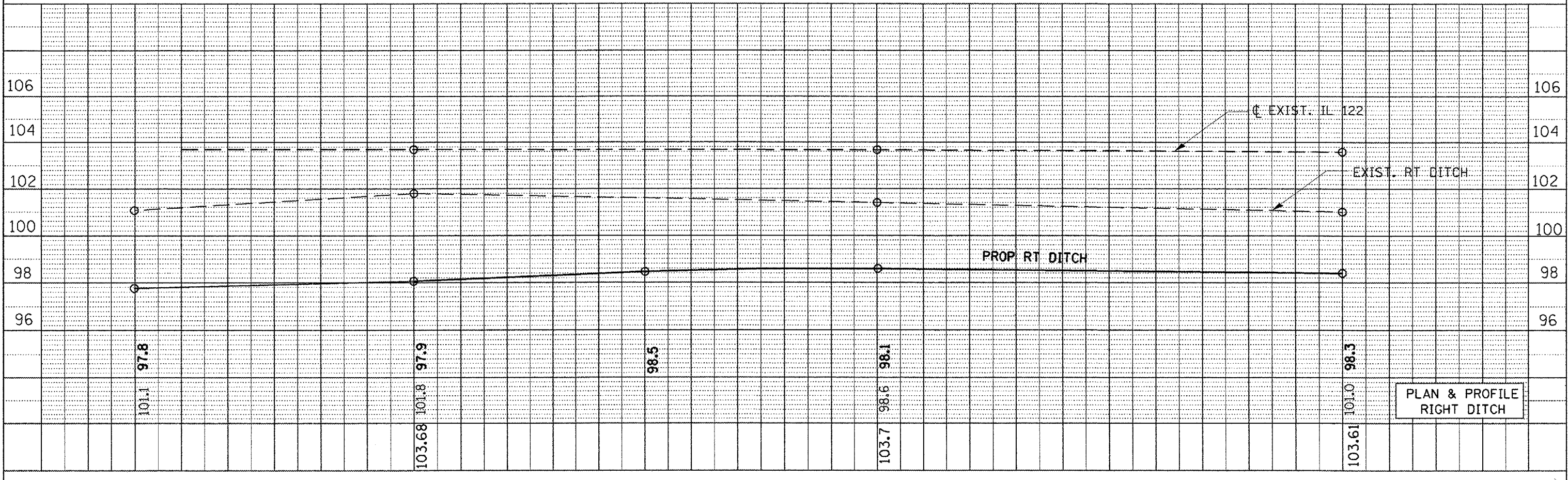
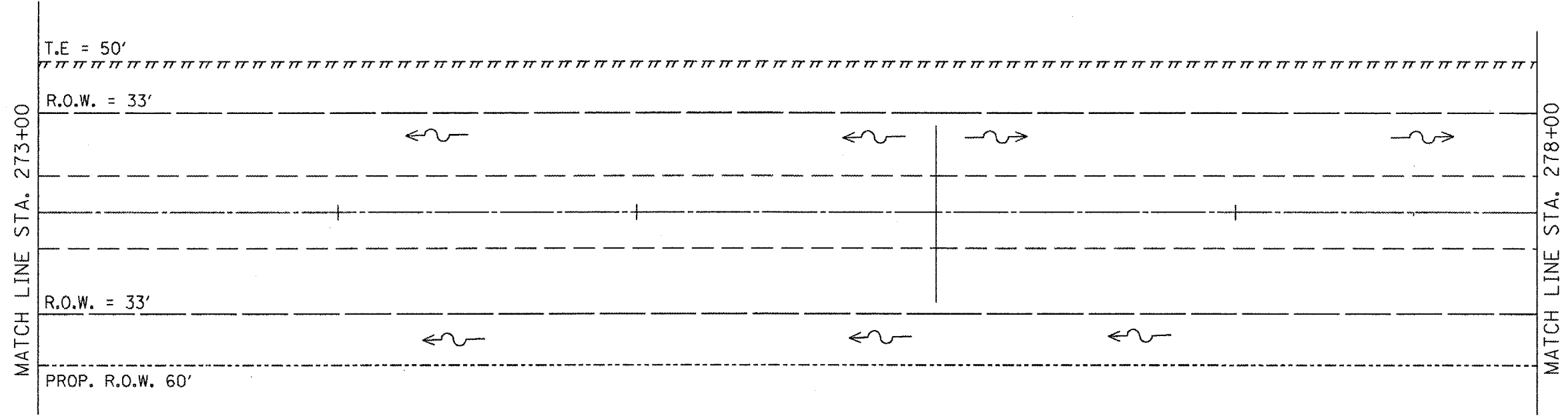
F.A.P. RTE.	SECTION	COUNTY	TOTAL SHEETS	SHEET NO.
701	D4 DRAIN IMP	TAZEWELL	27	11
STA.		TO STA.		
FED. ROAD DIST. NO. 4 ILLINOIS		FED. AID PROJECT		



PLAN	DATE
SURVEYED	
PLANNED	
DESIGNED	
CHECKED	
BY	

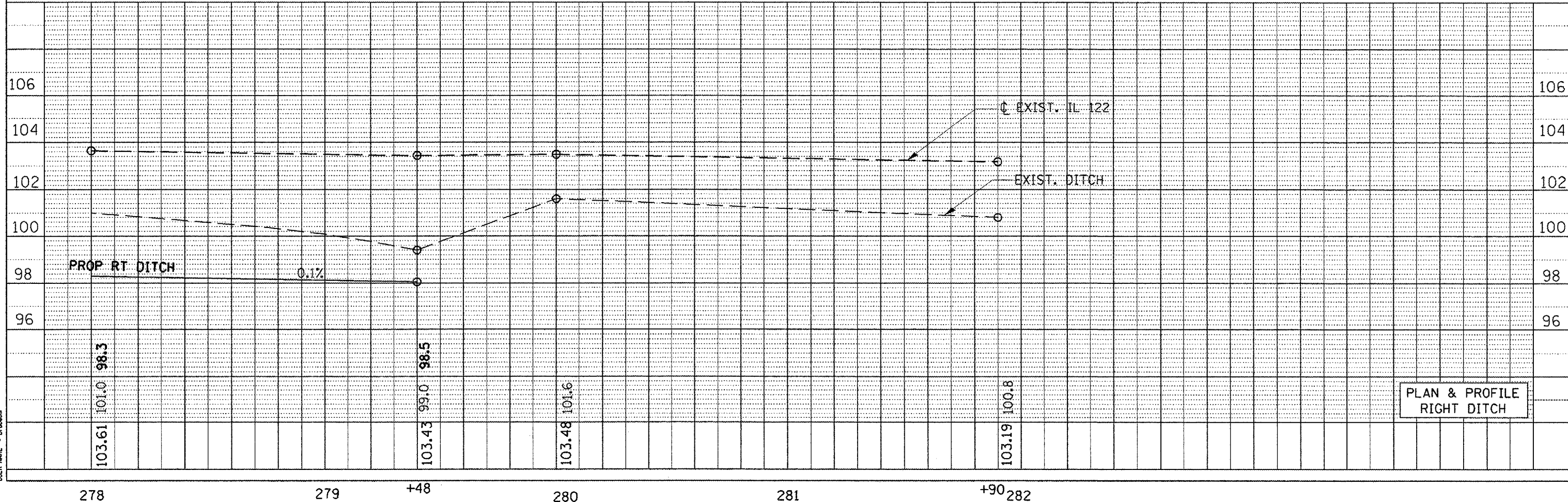
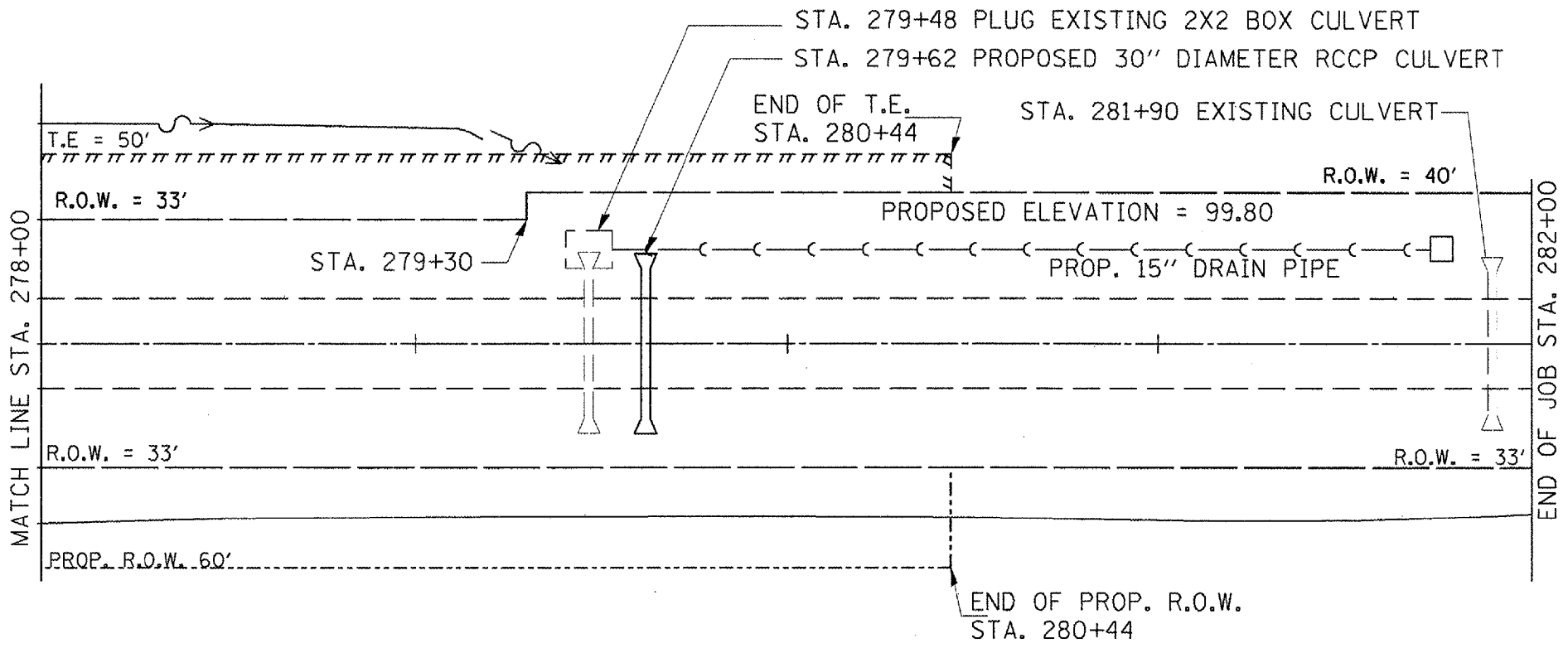
PROFILE	DATE
SURVEYED	
PLANNED	
DESIGNED	
CHECKED	
BY	

PLOT DATE = 5/2/2007
 FILE NAME = S:\GEN\UR\AF\STDR\NS\Squid\IA\68643\Plan & Prof\Landgn
 PLOT SCALE = 42.4875' / IN.
 USER NAME = BruceB



PLAN & PROFILE
RIGHT DITCH

F.A.P. RTE.	SECTION	COUNTY	TOTAL SHEETS	SHEET NO.
701	D4 DRAIN IMP	TAZEWELL	27	12
STA.		TO STA.		
FED. ROAD DIST. NO. 4		ILLINOIS	FED. AID PROJECT	



PLAN & PROFILE
RIGHT DITCH

PLAN

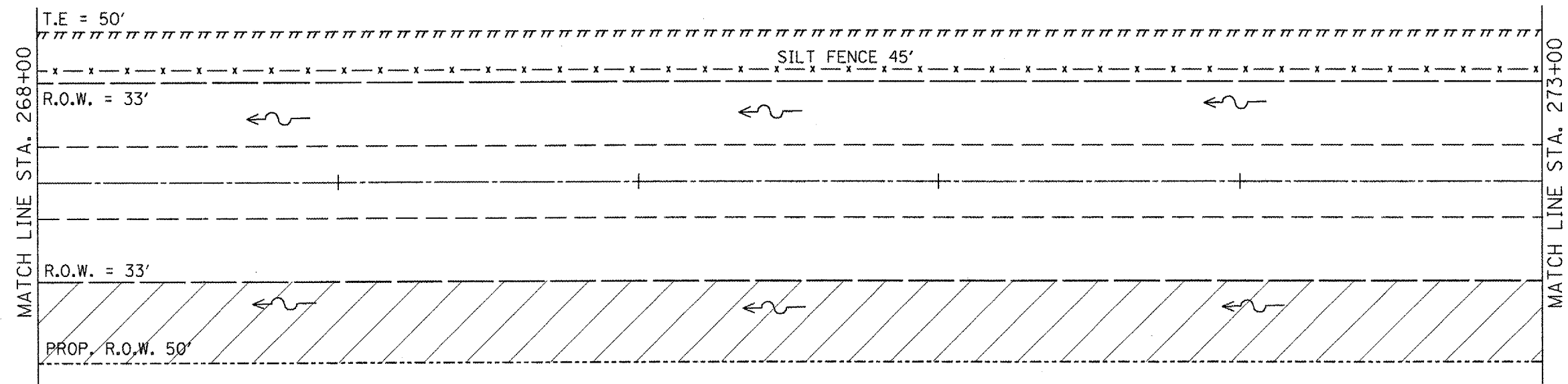
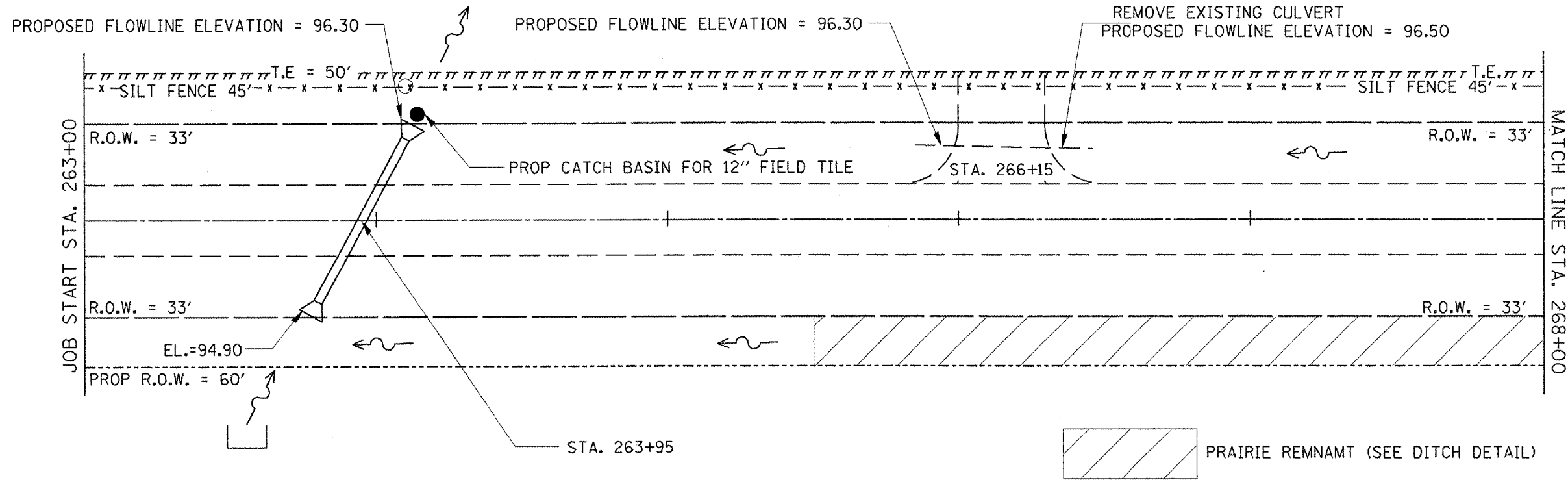
REVIEWED	DATE
PLOTTED	BY
ALIGNED	
CHECKED	
DESIGNED	
NO.	DATE FILE NAME


PROFILE

REVIEWED	DATE
PLOTTED	BY
ALIGNED	
CHECKED	
DESIGNED	
NO.	STRUCTURE NOTATION

PLOT DATE = 5/2/2007
 PLOT SCALE = 1" = 40.00' / IN.
 USER NAME = bruceb

F.A.P. RTE.	SECTION	COUNTY	TOTAL SHEETS	SHEET NO.
701	D4 DRAIN IMP	TAZEWELL	27	13
STA.		TO STA.		
FED. ROAD DIST. NO. 4		ILLINOIS FED. AID PROJECT		



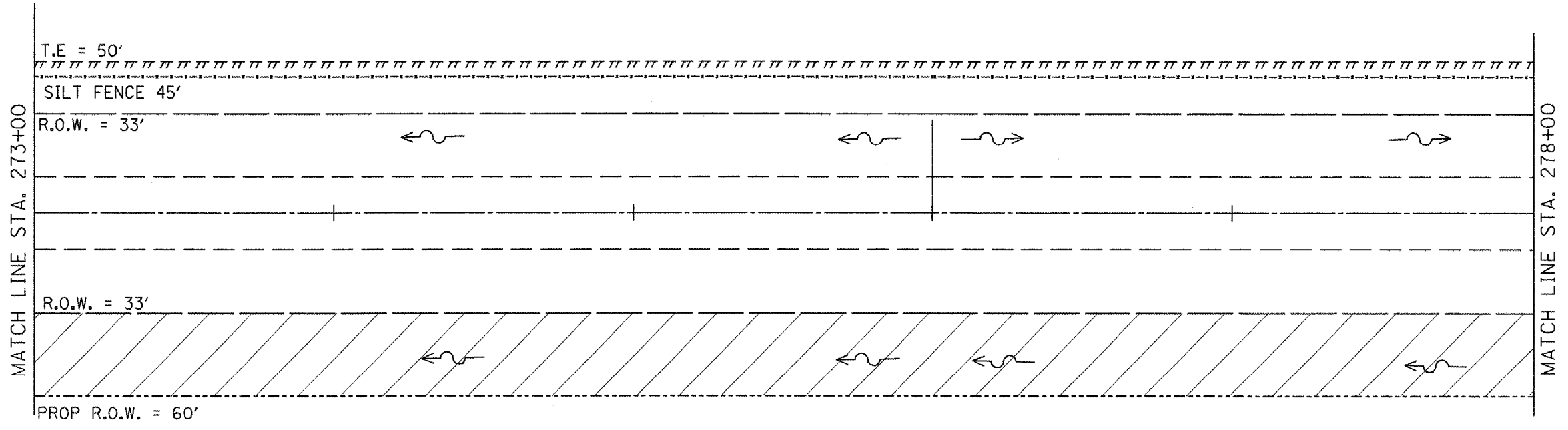
 PRAIRIE REMNAMT (SEE DITCH DETAIL)

REVISIONS	
NAME	DATE

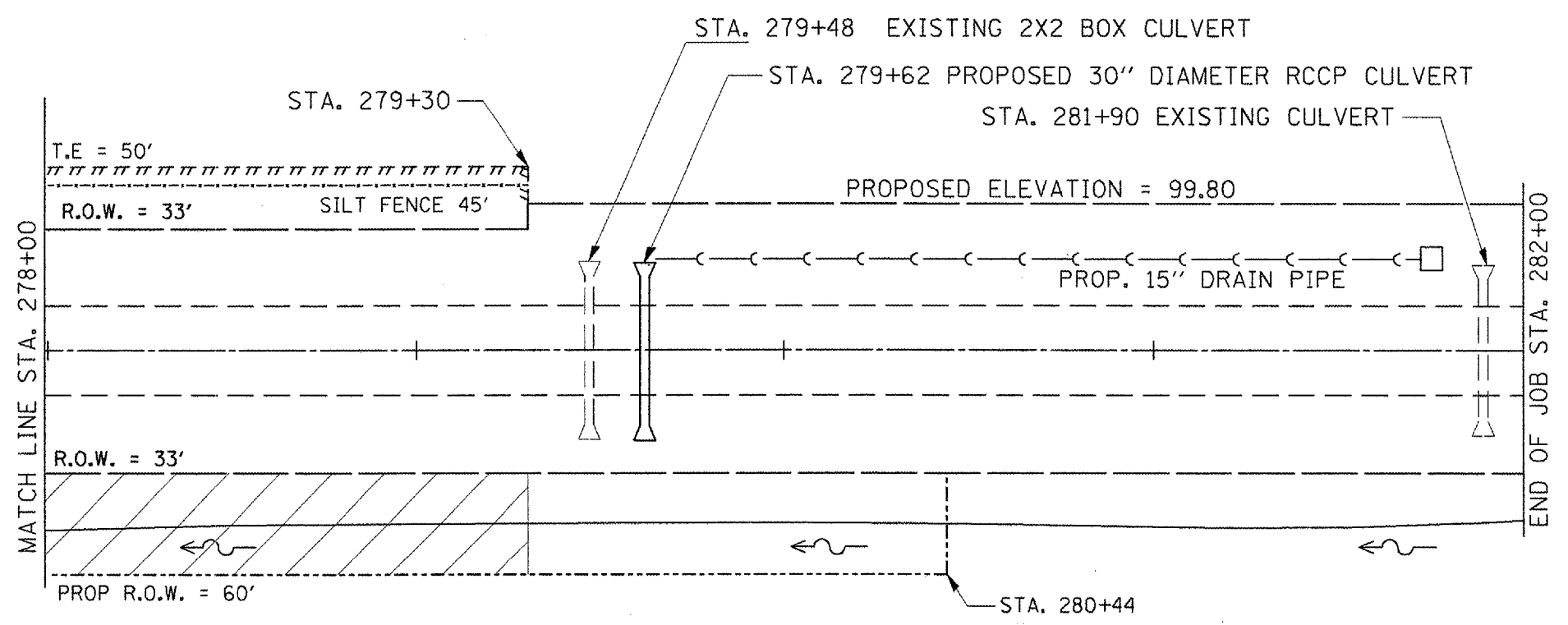
ILLINOIS DEPARTMENT OF TRANSPORTATION
PLAN DETAIL OF EROSION CONTROL
 SCALE: _____
 DATE: _____
 DRAWN BY: _____
 CHECKED BY: _____

PLOT DATE = 8/2/2007
 PLOT NAME = C:\WORKSPACE\TAS\TAS\PLAN\Squad\IAN68643\Plan & Profile.dgn
 PLOT SCALE = 42.4874' / IN.
 USER NAME = brucebbr

F.A.P. RTE.	SECTION	COUNTY	TOTAL SHEETS	SHEET NO.
701	D4 DRAIN IMP	TAZEWELL	27	14
STA.		TO STA.		
FED. ROAD DIST. NO. 4		ILLINOIS	FED. AID PROJECT	



PRAIRIE REMNANT (SEE DITCH DETAIL)



PRAIRIE REMNANT (SEE DITCH DETAIL)

REVISIONS	
NAME	DATE

ILLINOIS DEPARTMENT OF TRANSPORTATION

PLAN DETAIL OF EROSION CONTROL

SCALE: _____ DATE: _____

DRAWN BY: _____ CHECKED BY: _____

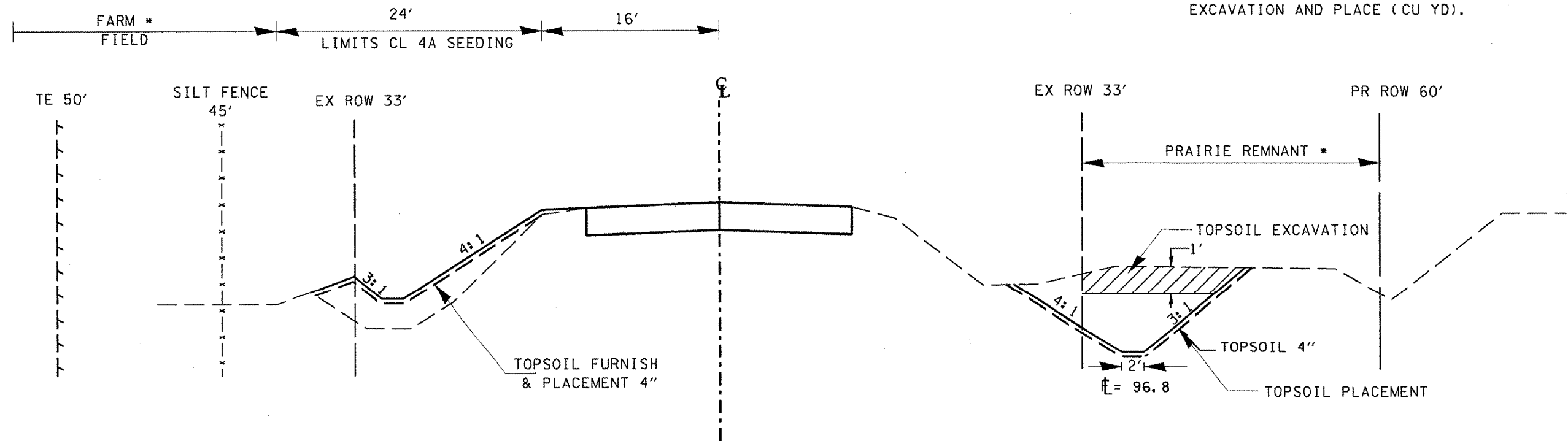
PLOT DATE = 6/27/2007
 FILE NAME = S:\GEN\DRN\TST08PUS\Submittal\68643\Plan & Profile.dgn
 USER NAME = brensh

F.A.P. RTE.	SECTION	COUNTY	TOTAL SHEETS	SHEET NO.
701	D4 DRAIN IMP	TAZEWELL	27	15
STA.		TO STA.		
FED. ROAD DIST. NO. 4		ILLINOIS FED. AID PROJECT		

* PRAIRIE REMNANT (30' - 60' LT STA. 279+40 - STA 265+50) THE AREA BETWEEN THE EXISTING R.O.W. (33' LT) AND THE OLD RR EMBANKMENT (60' LT) HAS BEEN IDENTIFIED AS A PRAIRIE REMNANT. CONSTRUCTION ACTIVITY IN THIS AREA SHALL BE MINIMIZED. PARKING OF VEHICLES AND EQUIPMENT AND STOCK PILING OF MATERIAL SHALL NOT BE ALLOWED ON THE REMNANT.

THE TOP 12" OF EARTH FROM THE RIGHT DITCH EXCAVATION SHALL BE EXCAVATED AND STOCKPILED. THE TOPSOIL SHALL BE PLACED ON THE PROPOSED LEFT DITCH.

THIS WORK WILL BE INCLUDED IN THE PAY ITEM TOPSOIL EXCAVATION AND PLACE (CU YD).



PLOT DATE = 8/22/2007
 FILE NAME = S:\GEN\DRF\T\STORPL\AS\Squid\11068643\11068643.dgn
 PLOT SCALE = 1/8" = 1'-0"
 USER NAME = bmcgovern

REVISIONS	
NAME	DATE

ILLINOIS DEPARTMENT OF TRANSPORTATION

DITCH DETAIL

SCALE: _____ DATE _____

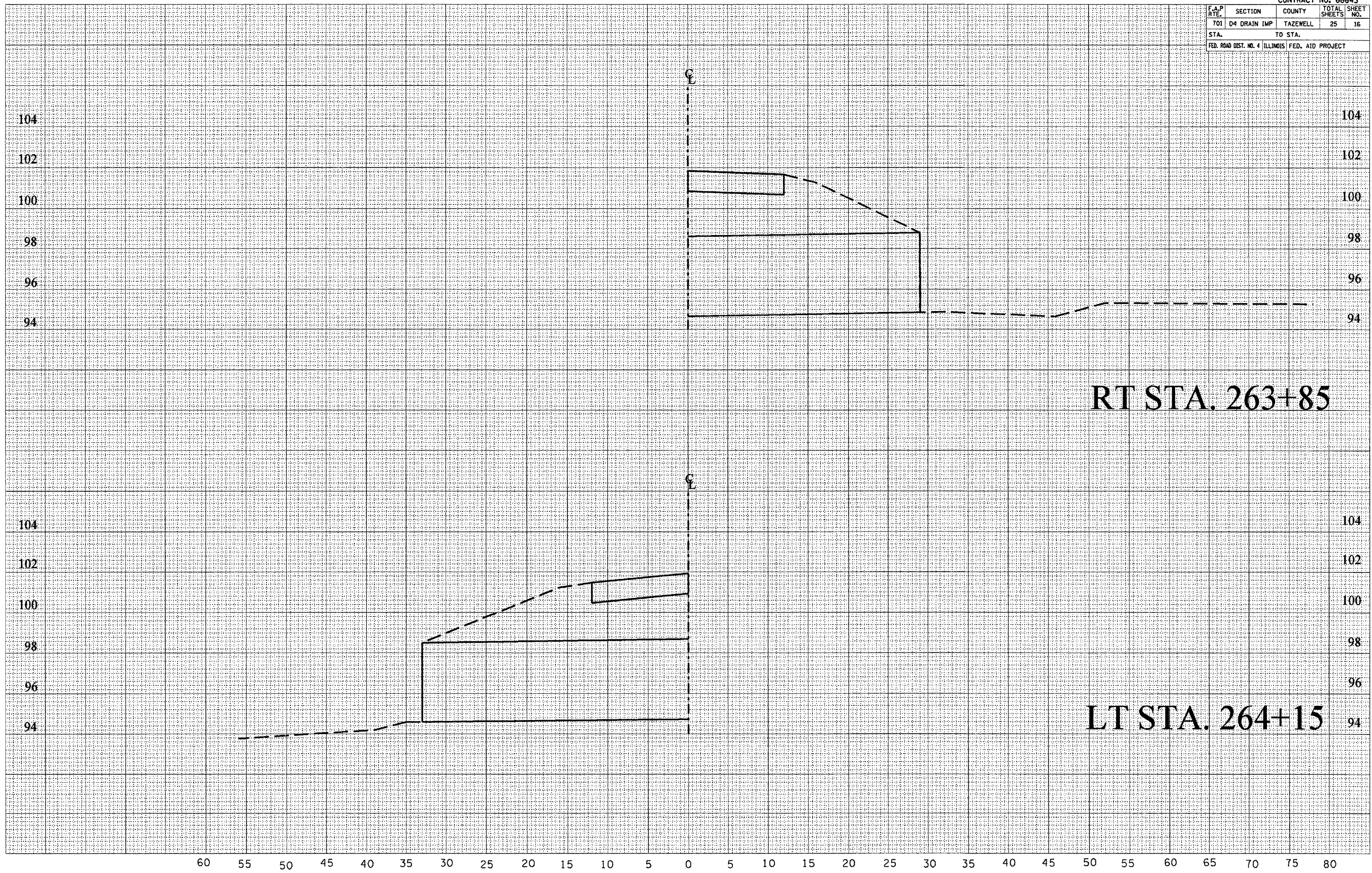
DRAWN BY _____
 CHECKED BY _____

F.A.P. RTE.	SECTION	COUNTY	TOTAL SHEETS	SHEET NO.
701	D4 DRAIN IMP	TAZEWELL	25	16
STA.		TO STA.		
FED. ROAD DIST. NO. 4 ILLINOIS FED. AID PROJECT				

FINAL SURVEY	SUPERVISOR	DATE
NOTE BOOK	PLOTTED	
NO.	TEMPLATE	
	AREAS CHECKED	

ORIGINAL SURVEY	SUPERVISOR	DATE
FILE NAME	PLOTTED	
USER NAME	TEMPLATE	
	AREAS CHECKED	

PLOT DATE = 6/2/2007
 FILE NAME = S:\GEN\UNFIN\1\STAD\PLANS\Asm\111866\111866.dwg
 USER NAME = RUSBY, J. III
 USER NO. = 111866



RT STA. 263+85

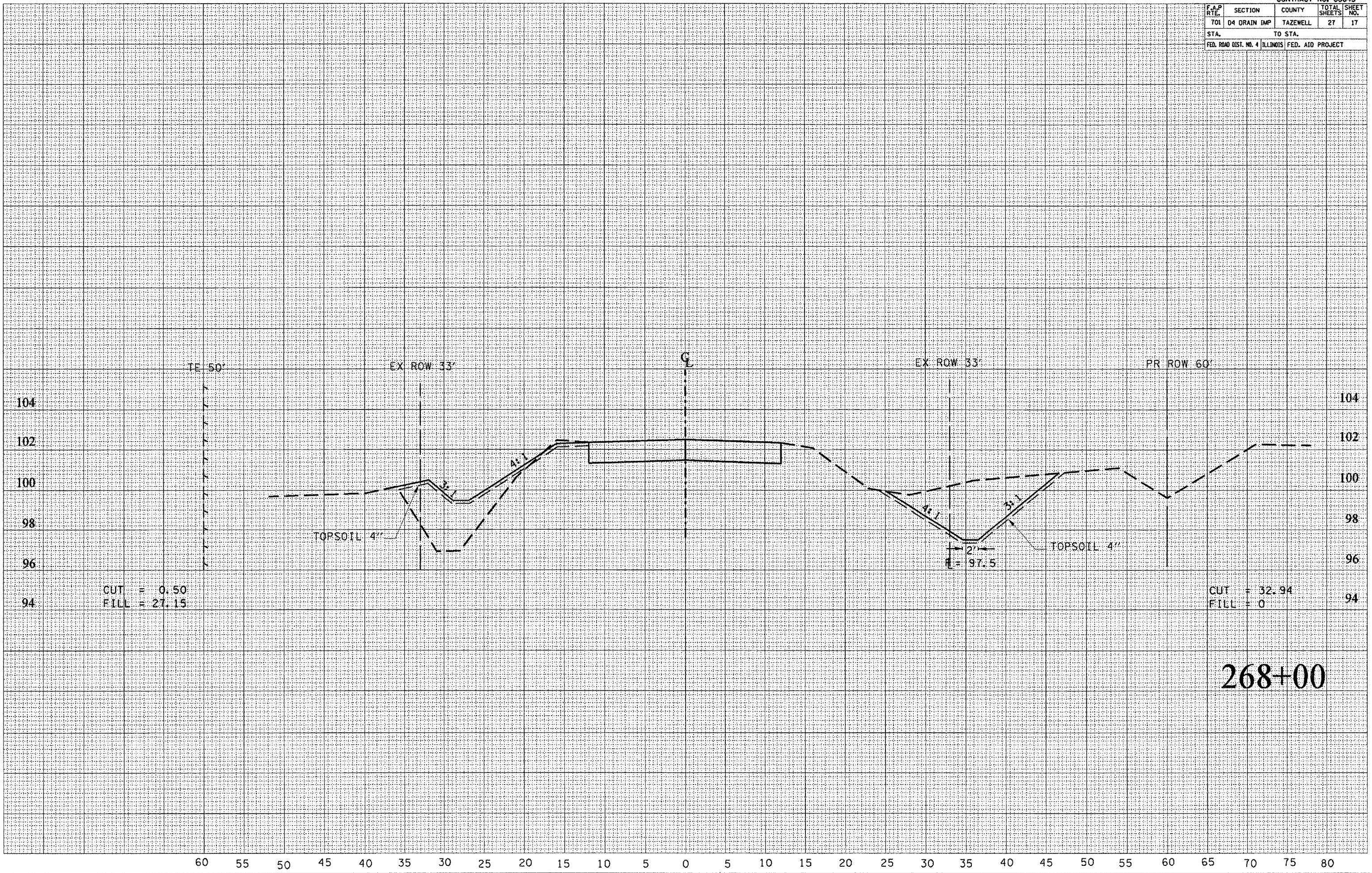
LT STA. 264+15

F.A.P. RITE	SECTION	COUNTY	TOTAL SHEETS	SHEET NO.
701	04 DRAIN IMP	TAZEWELL	27	17
STA. TO STA.		FED. ROAD DIST. NO. 4 ILLINOIS FED. AIG PROJECT		

DATE	
BY	
FINAL SURVEY	
NOTED	
AREAS CHECKED	
NO.	

DATE	
BY	
ORIGINAL SURVEY	
NOTED	
AREAS CHECKED	
NO.	

PLOT DATE = 6/2/2007
 PLOT SCALE = 1/8" = 10' / IN.
 USER NAME = brw@am



CUT = 0.50
 FILL = 27.15

CUT = 32.94
 FILL = 0

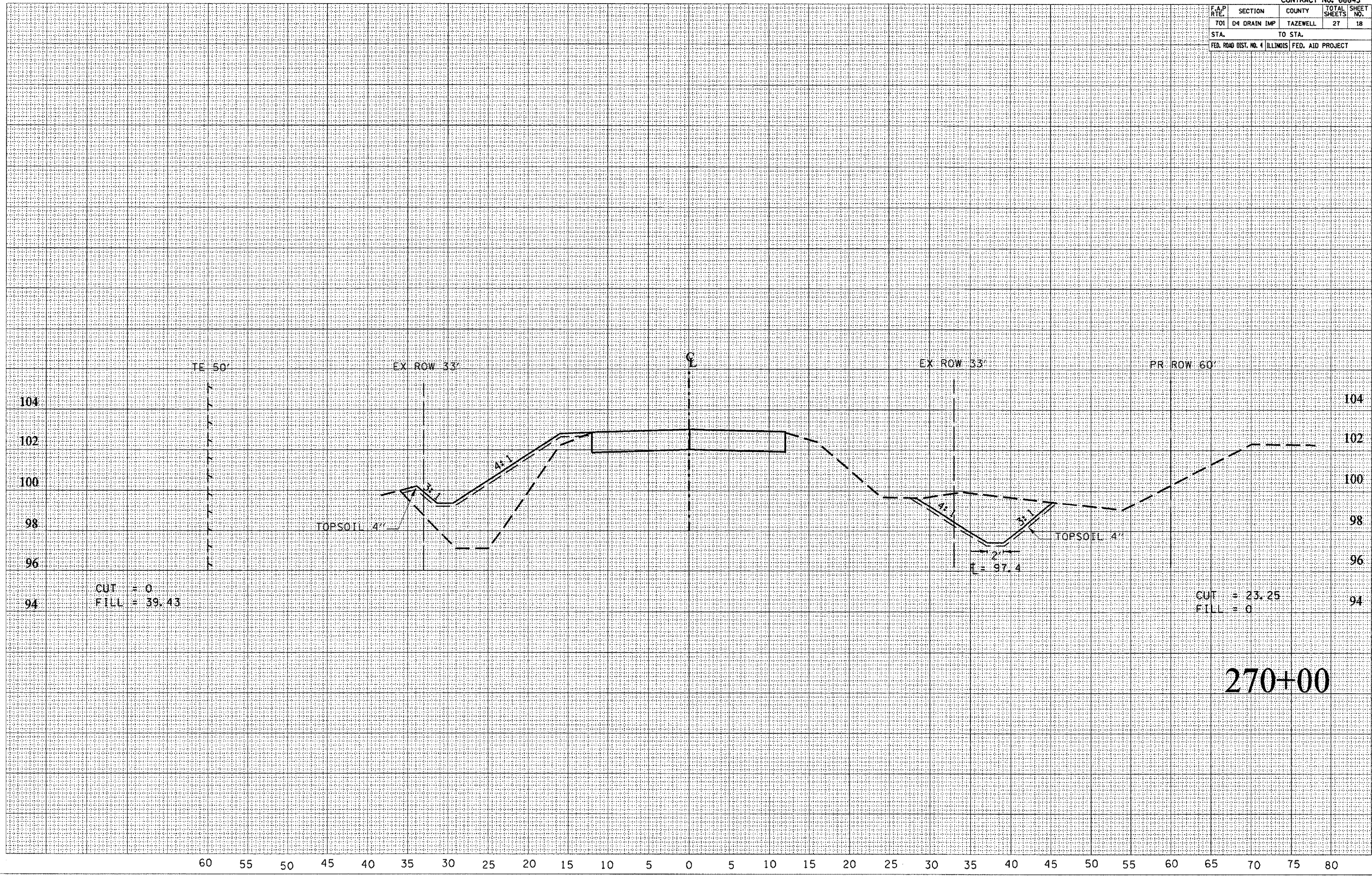
268+00

F.A.P. RTE.	SECTION	COUNTY	TOTAL SHEETS	SHEET NO.
T01	D4 DRAIN IMP	TAZEWELL	27	18
STA.		TO STA.		
FED. ROAD DIST. NO. 4 ILLINOIS FED. AID PROJECT				

FINAL SURVEY	DATE
NOTE BOOK	BY
NO.	
COMPILED	DATE
PLOTTED	BY
AMEND	
AREAS CHECKED	

ORIGINAL SURVEY	DATE
NOTE BOOK	BY
NO.	
COMPILED	DATE
PLOTTED	BY
AMEND	
AREAS CHECKED	

PLOT DATE = 6/2/2007
 FILE NAME = S:\GEN\DMPT\ST01P\PLN5\50media1\68643\2718.dwg
 USER NAME = JERRY / JN
 USER NAME = JERRY



CUT = 0
 FILL = 39.43

CUT = 23.25
 FILL = 0

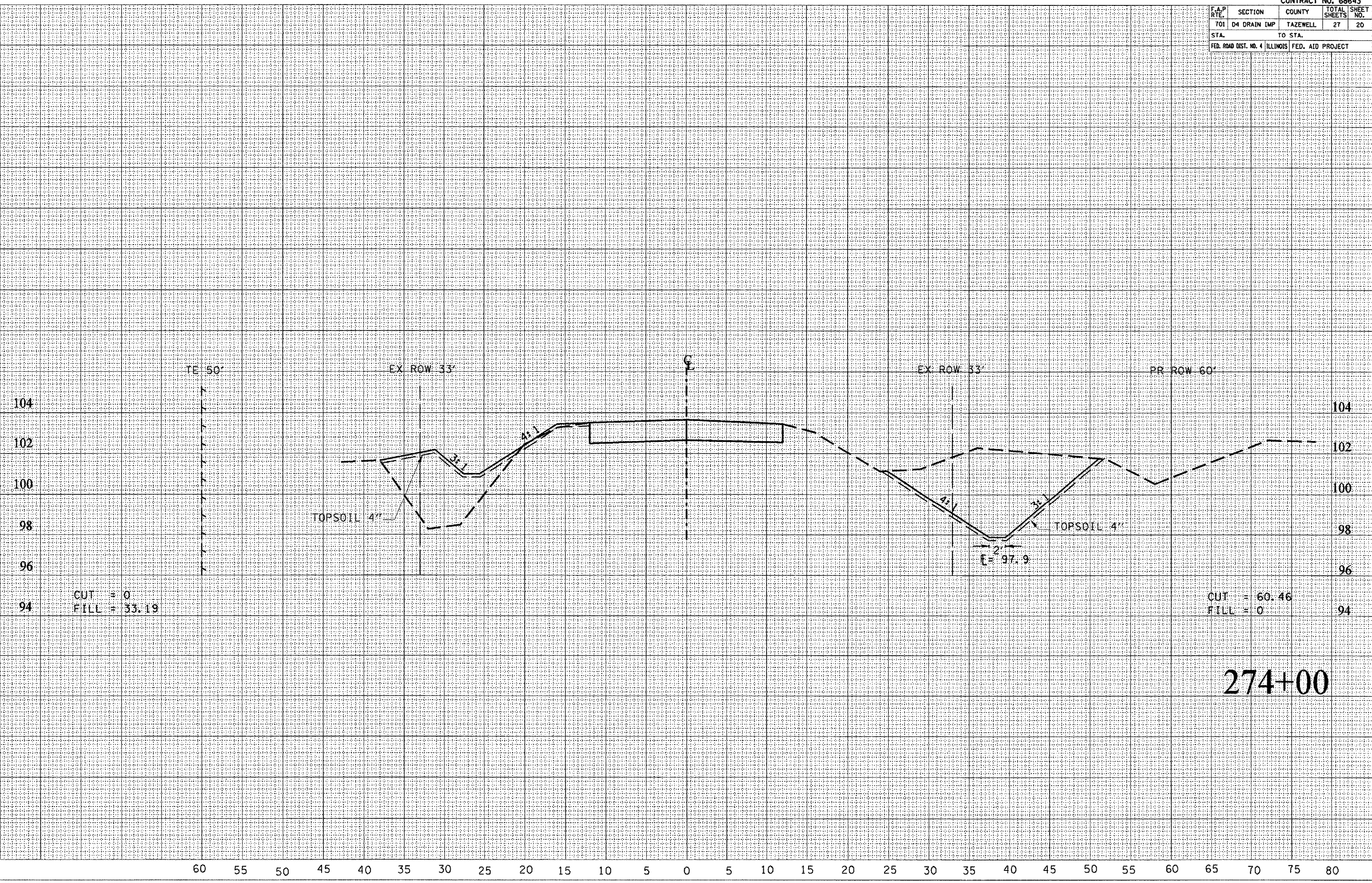
270+00

F.A.P. RTE.	SECTION	COUNTY	TOTAL SHEETS	SHEET NO.
TOI	D4 DRAIN IMP	TAZEWELL	27	20
STA.		TO STA.		
FED. ROAD DIST. NO. 4		ILLINOIS FED. AID PROJECT		

BY	
NO.	
AREAS CHECKED	
AREAS	
TEMPLATE	
SURVEY	
FINAL SURVEY	

DATE	
BY	
NO.	
AREAS CHECKED	
AREAS	
TEMPLATE	
SURVEY	
ORIGINAL SURVEY	

PLOT DATE = 8/22/2007
 FILE NAME = S:\GEN\DRIFT\ST04.PLS
 PLOT SCALE = 1/8" = 1' / IN.
 USER NAME = bruce@bentley.com

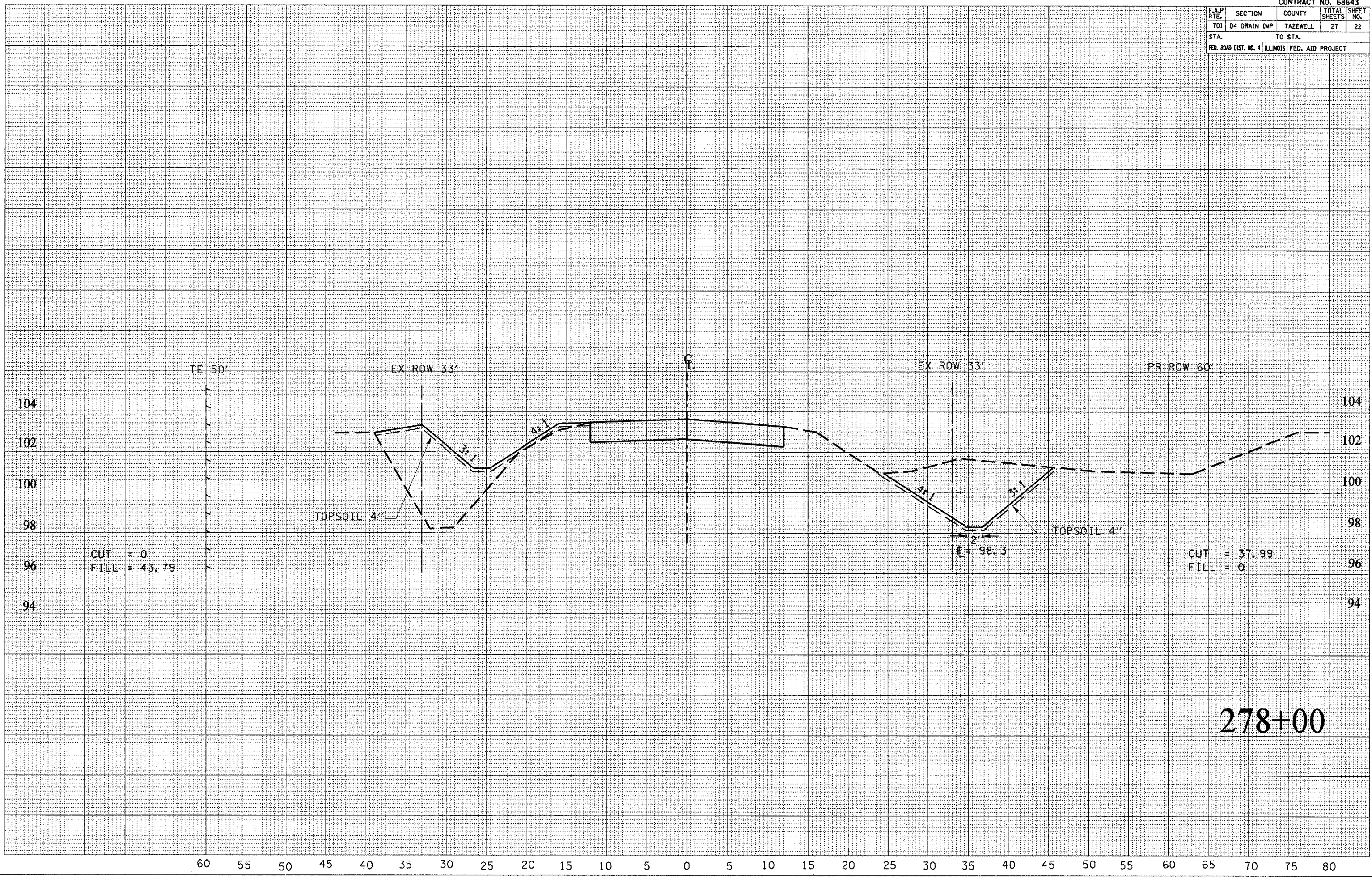


F.A.P. RTE.	SECTION	COUNTY	TOTAL SHEETS	SHEET NO.
701	D4 DRAIN IMP	TAZEWELL	27	22
STA. TO STA.				
FED. ROAD DIST. NO. 4 ILLINOIS FED. AID PROJECT				

FINAL SURVEY	SURVEYED	BY	DATE
NOTE BOOK NO.	PLOTTED TEMPLATE		
	AREAS CHECKED		

ORIGINAL SURVEY	SURVEYED	BY	DATE
PLANNING	PLOTTED		
	AREAS CHECKED		

PLOT DATE = 6/2/2007
 PLOT SCALE = 1" = 40'
 USER NAME = bruceabn



CUT = 0
 FILL = 43.79

CUT = 37.99
 FILL = 0

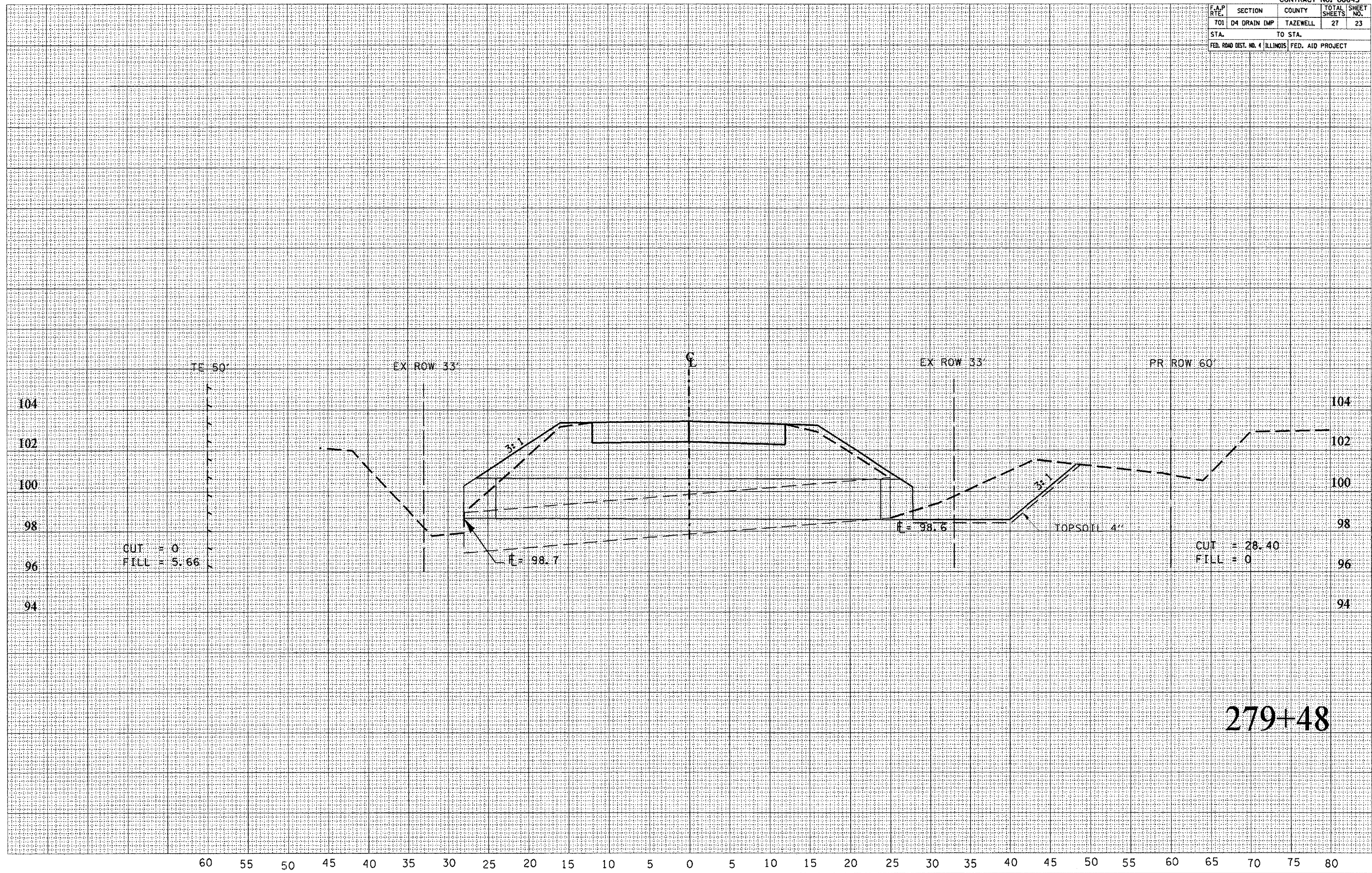
278+00

F.A.P. RTE.	SECTION	COUNTY	TOTAL SHEETS	SHEET NO.
T01	D4 DRAIN IMP	TAZEWELL	27	23
STA.		TO STA.		
FED. ROAD DIST. NO. 4 ILLINOIS		FED. AID PROJECT		

FINAL SURVEY	DATE
NO. _____	BY _____
NO. _____	DATE _____
NO. _____	BY _____
NO. _____	DATE _____
NO. _____	BY _____
NO. _____	DATE _____

ORIGINAL SURVEY	DATE
NO. _____	BY _____
NO. _____	DATE _____
NO. _____	BY _____
NO. _____	DATE _____
NO. _____	BY _____
NO. _____	DATE _____

PLOT DATE = 8/22/2007
 FILE NAME = S:\GEN\DRIFT\ST04PLUS\Squadria\88643\304\304.DWG
 PLOT SCALE = 1/8" = 1' / IN.
 USER NAME = brc643m



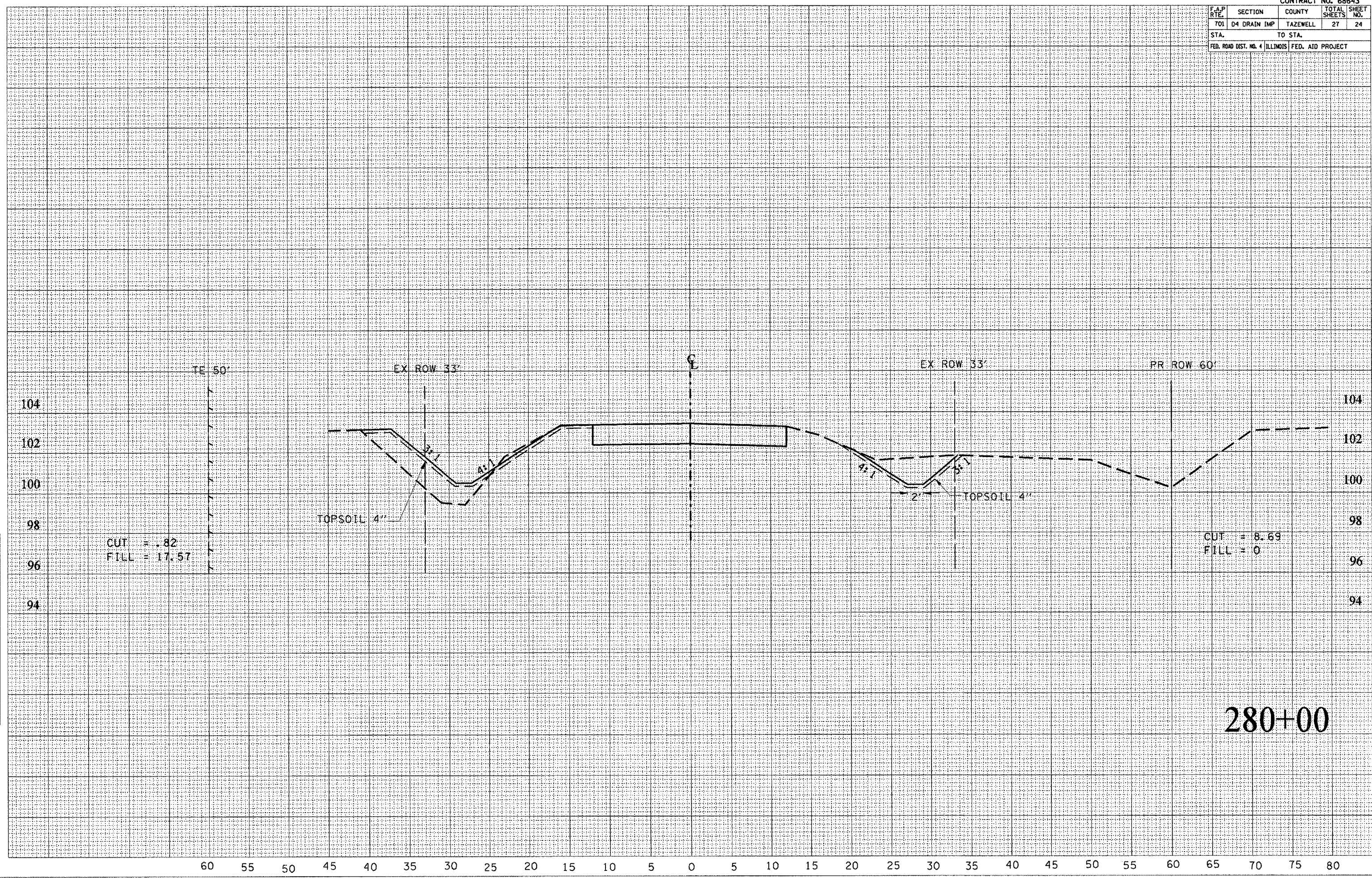
279+48

F.A.P. RTE.	SECTION	COUNTY	TOTAL SHEETS	SHEET NO.
701	D4 DRAIN IMP	TAZEWELL	27	24
STA.		TO STA.		
FED. ROAD DIST. NO. 4 ILLINOIS FED. AID PROJECT				

BY	
DATE	
REVISION	
NO.	
DATE	
REVISION	
NO.	
DATE	
REVISION	
NO.	

BY	
DATE	
REVISION	
NO.	
DATE	
REVISION	
NO.	
DATE	
REVISION	
NO.	

PLOT DATE = 8/27/2007
 FILE NAME = S:\GEA\DRIFT\ST04\PLN5\9400\PLAN5\9400.DWG
 PLOT SCALE = 1/8" = 1' / IN.
 USER NAME = BruceB



280+00

