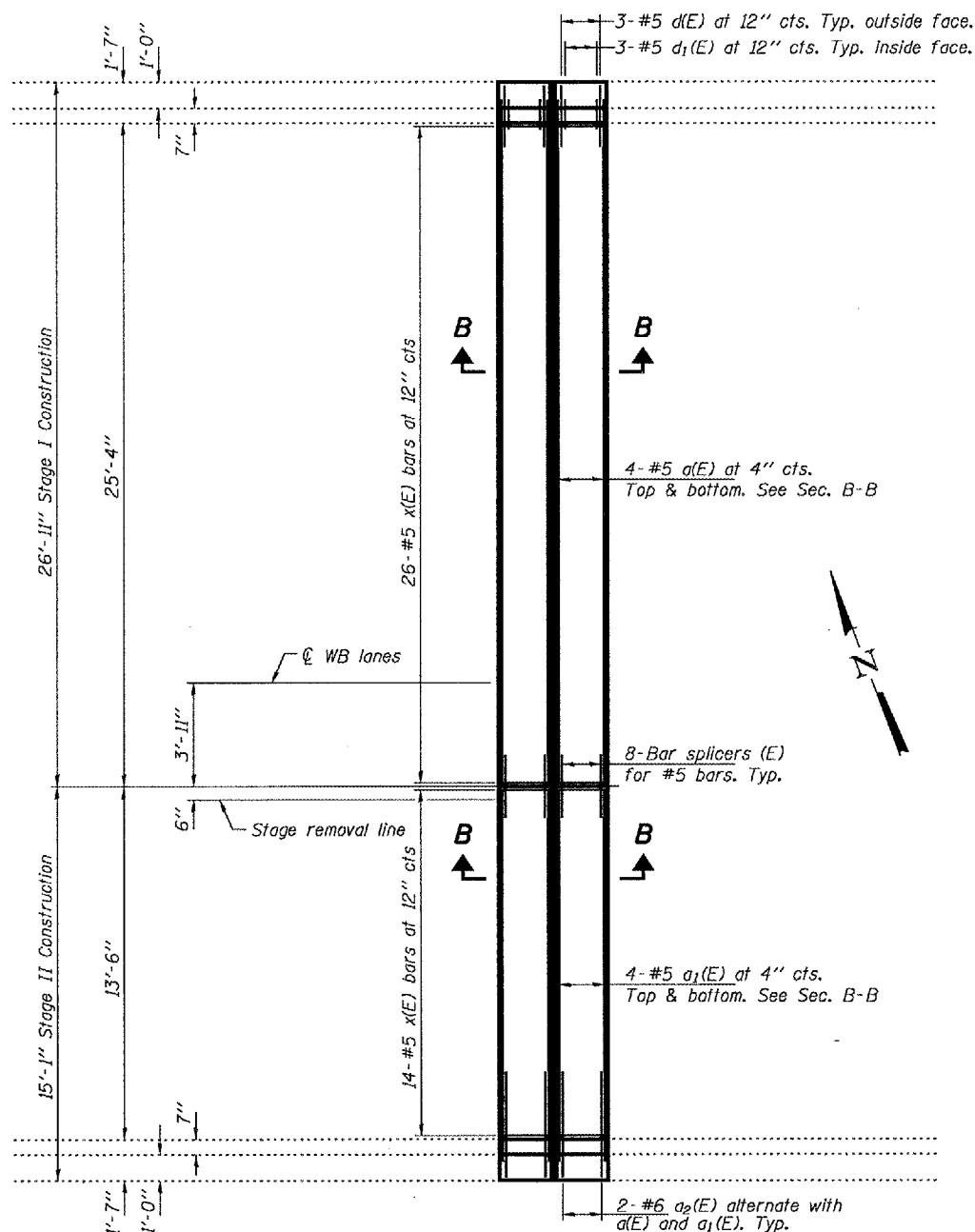


STATE OF ILLINOIS
DEPARTMENT OF TRANSPORTATION

ROUTE NO.	SECTION	COUNTY	TOTAL SHEETS	SHEET NO.
US 150/24		PEORIA TAZEWELL	22	18
FED. ROAD DIST. NO. 7	ILLINOIS	FED. AID PROJECT		

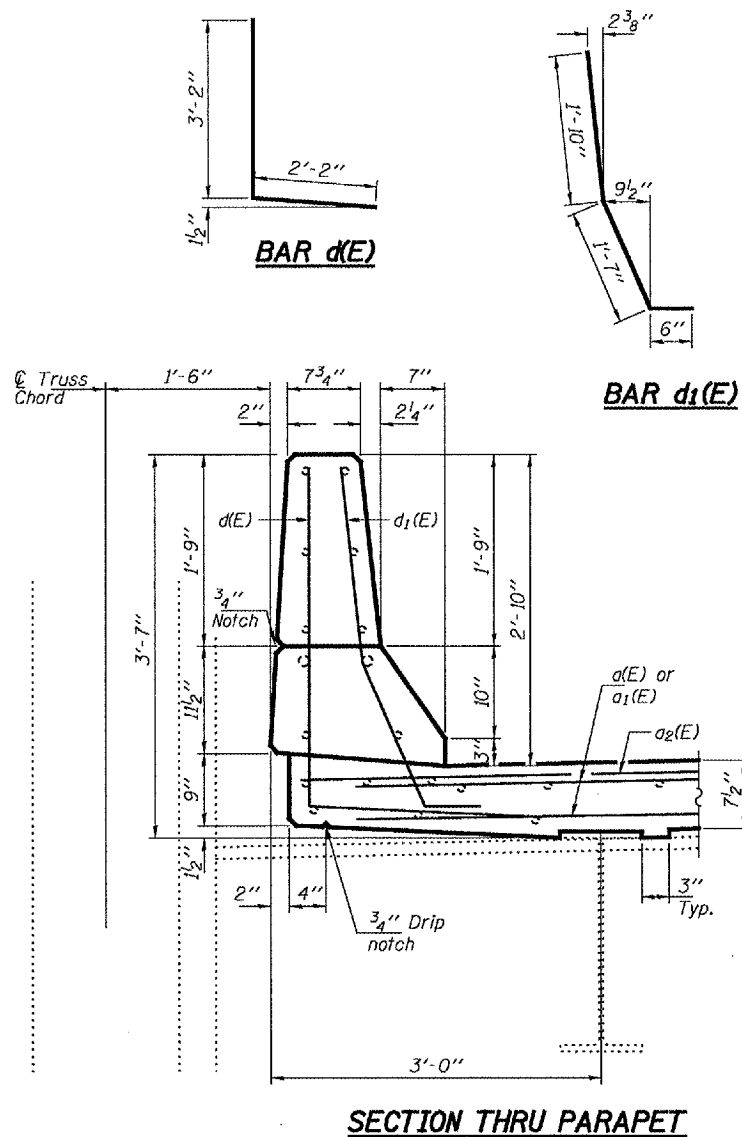
SHEET NO. 3
7 SHEETS

Contract Number: 68695

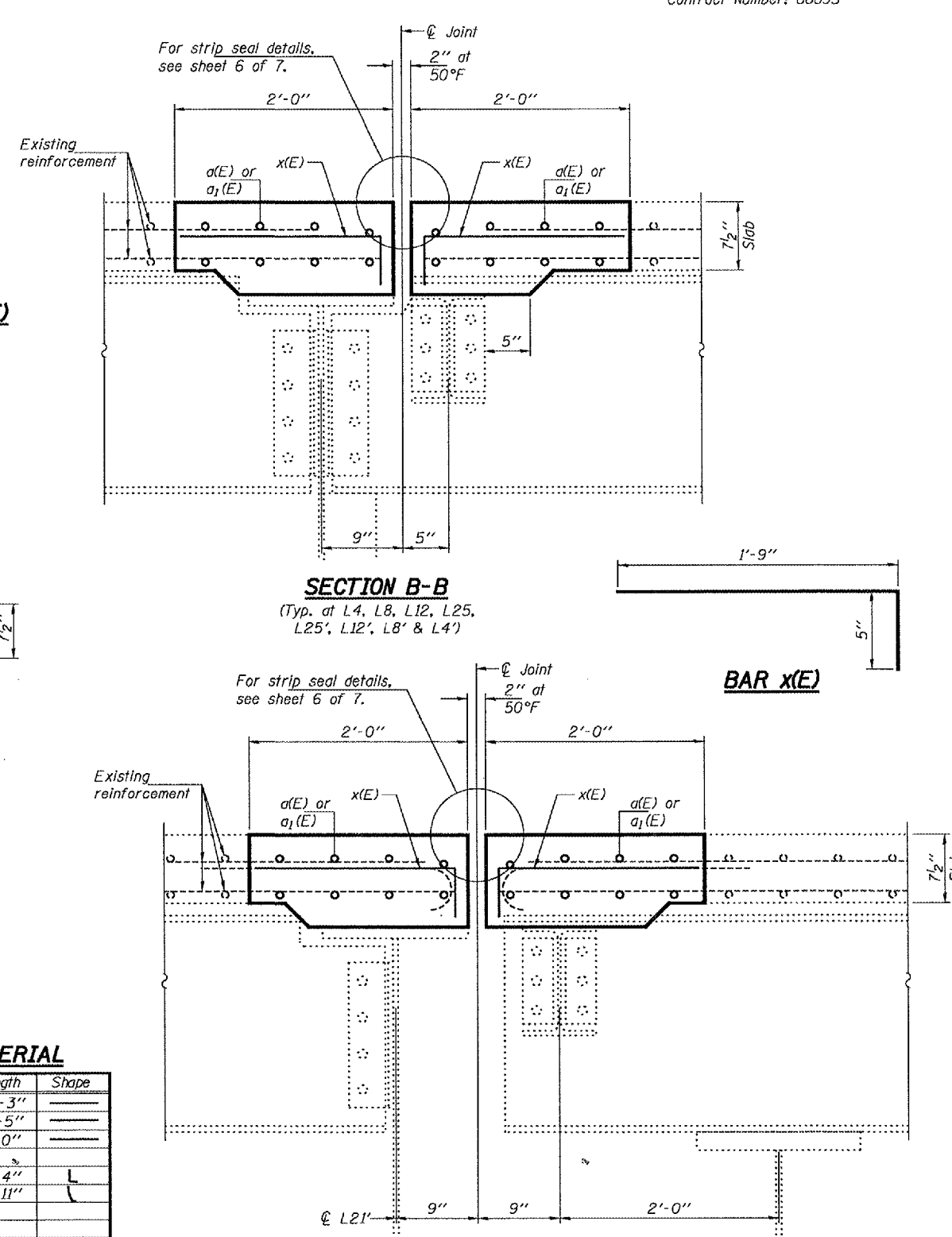


PLAN

(Typ. at L4, L8, L12, L25,
L25', L21', L12', L8' & L4')



SECTION THRU PARAPET



SECTION B-B

(Typ. at L4, L8, L12, L25,
L25', L12', L8' & L4')

SECTION B-B

(Typ. at L21')

BILL OF MATERIAL

Bar	No.	Size	Length	Shape
a(E)	144	#5	26'-3"	—
a1(E)	144	#5	14'-5"	—
a2(E)	72	#6	6'-0"	—
d(E)	108	#5	5'-4"	L
d1(E)	108	#5	3'-11"	L
x(E)	720	#6	2'-2"	—
Reinforcement Bars, Epoxy Coated		Pound	10140	
Concrete Superstructure		Cu. Yd.	51.2	
Bar Splicers		Each	144	
Protective Coat		Sq. Yd.	184.7	

DESIGNED	AJB
CHECKED	SJB
DRAWN	baliva
CHECKED	AJB SJB

APRIL 24, 2007
 EXAMINED *Carl Prosser*
 REPAIR PLANS UNIT CHIEF
 PASSED *Ralph E. Anderson*
 ENGINEER OF BRIDGES AND STRUCTURES

Reinforcement bars shall conform to the requirements of ASTM A 706 Gr 60 (IL Modified). See Special Provisions.
 Reinforcement bars designated (E) shall be epoxy coated.
 Existing reinforcement bars extending into the removal area shall be cleaned, straightened and incorporated into the new construction.
 Any reinforcement bars that are damaged during concrete removal shall be replaced with an approved bar splicer or anchorage system.
 Cost included with Concrete Removal.

TRUSS
JOINT REPLACEMENT DETAILS
FAP 317
PEORIA/TAZEWELL COUNTIES
SN 090-0115