



# Illinois Department of Transportation

2300 South Dirksen Parkway / Springfield, Illinois / 62764

May 30, 2007

SUBJECT: FAU Route 6845 (US 150)  
Section D4 MISC SIGNAL WORK 2008-1  
Knox County  
Contract No. 68739  
Item No. 201, June 15, 2007 Letting  
Addendum A

## NOTICE TO PROSPECTIVE BIDDERS:

Attached is an addendum to the plans or proposal. This addendum involves revised and/or added material.

1. Revised page 1 of the Schedule of Prices.
2. Revised page i of the Table of Contents to the Special Provisions.
3. Added page 13 to the Special Provisions.
4. Revised sheets 3, 4, 7 & 8 of the Fold-Up Plans.

Prime contractors must utilize the enclosed material when preparing their bid and must include any Schedule of Prices changes in their bidding proposal.

Bidders using computer-generated bids are cautioned to reflect any and all Schedule of Prices changes, if involved, into their computer programs.

Very truly yours,

Eric E. Harm  
Interim Bureau Chief  
Bureau of Design and Environment

A handwritten signature in black ink, appearing to read 'Ted B. Walschleger P.E.'.

By: Ted B. Walschleger, P. E.  
Engineer of Project Management

cc: J. E. Crowe, Region 3, District 4; Roger Driskell; Estimates; Design & Environment File

TBW:RS:jc



**TABLE OF CONTENTS**

LOCATION OF PROJECT ..... 1  
DESCRIPTION OF PROJECT..... 1  
TRAFFIC CONTROL PLAN ..... 1  
LOCATION OF UNDERGROUND STATE MAINTAINED FACILITIES..... 2  
CONTRACT GUARANTEE ..... 2  
FULL ACTUATED CONTROLLER AND TYPE IV CABINET, SPECIAL..... 3  
INDUCTIVE LOOP DETECTOR ..... 4  
STEEL MAST ARM ASSEMBLY AND POLE, 26' SPECIAL ..... 4  
PEDESTRIAN PUSHBUTTON ..... 5  
GROUNDING OF TRAFFIC SIGNAL STRUCTURES ..... 6  
TRAFFIC SIGNAL POST, GALVANIZED STEEL, 15'..... 6  
REBUILD EXISTING SIGNAL HEAD ..... 7  
ERRATA FOR THE 2007 STANDARD SPECIFICATIONS (BDE)..... 7  
PAYMENTS TO SUBCONTRACTORS (BDE) ..... 9  
REFLECTIVE SHEETING ON CHANNELIZING DEVICES (BDE) ..... 10  
SUBCONTRACTOR MOBILIZATION PAYMENTS (BDE) ..... 11  
TRAFFIC SIGNAL GROUNDING (BDE) ..... 11  
WORKING DAYS (BDE) ..... 12  
STEEL MAST ARM ASSEMBLY AND POLE, 26' SPECIAL ..... 13

Revised 05/30/2007

## **STEEL MAST ARM ASSEMBLY AND POLE, 26' SPECIAL**

This work shall be in accordance with the applicable Articles of Sections 877 and 1077 of the Standard Specifications with the following modification:

This work shall consist of installing a steel mast arm assembly and pole on an existing concrete foundation. The mast arm assembly and pole will be furnished by the Department and the Contractor shall pick up the mast arm assembly from the IDOT Warehouse located at 5500 W. Rt. 150, Edwards, IL and deliver it to the job site.

The Contractor shall be responsible for removing any existing grout, cleaning the existing anchor bolt threads, and performing all other work required to prepare the existing foundation and install the mast arm.

The existing mast arm assembly and pole shall be removed and disposed of off of the job site. The cost of removing, transporting, and disposing of the mast arm shall be included in the bid price for the proposed mast arm. The Contractor shall reflect the salvage value of the mast arm in the bid price for the proposed mast arm assembly.

The Contractor shall remove all signal heads and backplates, pedestrian signal heads, and signs from the existing mast arm located in the southeast quadrant at the intersection of US 150 (Main St.) & Academy and install them on the proposed mast arm assembly. The Contractor shall provide new bracketing and all hardware required for installation. There are a total of two 3-section mast arm mounted heads, one 4-section bracket mounted head, and two bracket mounted pedestrian heads.

Basis of Payment: This work will be paid for at the contract unit price each for STEEL MAST ARM ASSEMBLY AND POLE, 26 FT. SPECIAL which shall be payment for all labor, equipment, and materials required install the mast arm assembly as described above, complete. No additional compensation will be allowed.

Added 05/30/2007

ROUTE		SECTION		COUNTY		SHEET	
MKD.	DESIG.	D4 MISC SIGNAL		KNOX		TOTAL	NO.
FAU 6845	US 150	WORK 2008-1				8	3

### SUMMARY OF QUANTITIES

CODE NUMBER	ITEM DESCRIPTION	UNIT	TOTAL QTY	KNOX COUNTY	
				CONST.	TYPE CODE
67100100	MOBILIZATION	L SUM	1.0		1.0
70102635	TRAFFIC CONTROL PROTECTION, STANDARD 701701	L SUM	1.0		1.0
85700205	FULL-ACTUATED CONTROLLER AND TYPE IV CABINET, SPECIAL	EACH	3.0		3.0
87502490	TRAFFIC SIGNAL POST, GALVANIZED STEEL 15 FT.	EACH	1.0		1.0
87701170	STEEL MAST ARM ASSEMBLY AND POLE, 26 FT. (SPECIAL)	EACH	1.0		1.0
88500100	INDUCTIVE LOOP DETECTOR	EACH	22.0		22.0
88800100	PEDESTRIAN PUSHBUTTON	EACH	24.0		24.0
89502100	REBUILD EXISTING SIGNAL HEAD	EACH	2.0		2.0
X8730027	ELECTRIC CABLE IN CONDUIT, GROUNDING, NO. 6 1C	FOOT	1475.5		1475.5

REVISED 5/29/07

SUMMARY OF QUANTITIES

ROUTE		SECTION	COUNTY	SHEET
MKD.	DESIG.	D4 MISC SIGNAL WORK 2008-1	KNOX	TOTAL
FAU 6845	US 150			8

### SCHEDULE OF QUANTITIES

ITEM DESCRIPTION	UNIT	TOTAL QTY	US 150 (MAIN ST.) & ACADEMY	US 150 (MAIN ST.) & GRAND/BLAINE	US 150 (GRAND AVE.) & FARNHAM
MOBILIZATION	L SUM	1.0	0.4	0.3	0.3
TRAFFIC CONTROL & PROTECTION STANDARD 701701	L SUM	1.0	0.4	0.3	0.3
FULL-ACTUATED CONTROLLER AND TYPE IV CABINET, SPECIAL	EACH	3.0	1.0	1.0	1.0
STEEL MAST ARM ASSEMBLY AND POLE, 26 FT. (SPECIAL)	EACH	1.0	1.0		
TRAFFIC SIGNAL POST, GALVANIZED STEEL 15 FT.	EACH	1.0		1.0	
INDUCTIVE LOOP DETECTOR	EACH	22.0	9.0	7.0	6.0
PEDESTRIAN PUSHBUTTON	EACH	24.0	8.0	8.0	8.0
REBUILD EXISTING SIGNAL HEAD	EACH	2.0		2.0	
ELECTRIC CABLE IN CONDUIT, GROUNDING, NO. 6 1C	FOOT	1475.5	275.5	379.5	820.5

△ REVISED 5/29/07

SCHEDULE OF QUANTITIES

ROUTE		SECTION	COUNTY	SHEET
MKD.	DESIG.	D4 MISC SIGNAL WORK 2008-1	KNOX	TOTAL NO.
FAU 6845	US 150			8   7

DETECTOR ASSIGNMENT SCHEDULE	
LOOP	PHASE NO. CHANNELS REQUIRED
D-1	1 1
D-2A, D-2B	2 2
D-3	3 1
D-4A, D-4B	4 2
D-6A, D-6B	6 2
D-8	8 1
	TOTAL 9

**CONSTRUCTION NOTES**

1. THE CONTRACTOR WILL BE ALLOWED TO PLACE THE INTERSECTION INTO ALL-RED FLASH MODE TO FACILITATE THE INSTALLATION OF THE PROPOSED TRAFFIC SIGNAL CONTROLLER AND CABINET.
2. THE CONTRACTOR SHALL FURNISH AND INSTALL A MINIMUM OF TWO STOP SIGNS PER APPROACH WHEN THE INTERSECTION IS OPERATING IN ALL-RED FLASH MODE. THE TRAFFIC SIGNALS MAY BE PLACED INTO ALL-RED FLASH MODE BETWEEN THE HOURS OF 8:30AM AND 3:30PM ONLY.
3. THE CONTRACTOR SHALL RESTORE THE TRAFFIC SIGNAL TO NORMAL OPERATION AT ALL OTHER TIMES, UNLESS SPECIFICALLY DIRECTED OTHERWISE BY THE ENGINEER.
4. THE EXISTING CONTROLLER CABINET SHALL BE REMOVED AND DELIVERED TO THE IDOT TRAFFIC BUILDING LOCATED AT 5826 N. KNOXVILLE AVE., PEORIA, IL. THE CONTRACTOR SHALL NOTIFY PAUL GRANT AT 671-4464 FORTY-EIGHT HOURS PRIOR TO DELIVERY.
5. ALL COSTS (LABOR, MATERIALS, AND EQUIPMENT) ASSOCIATED WITH THESE REQUIREMENTS SHALL BE INCLUDED IN THE CONTRACT BID PRICE FOR FAC CONTROLLER AND TYPE IV CABINET, SPECIAL. THERE WILL BE NO ADDITIONAL COMPENSATION FOR THIS WORK.

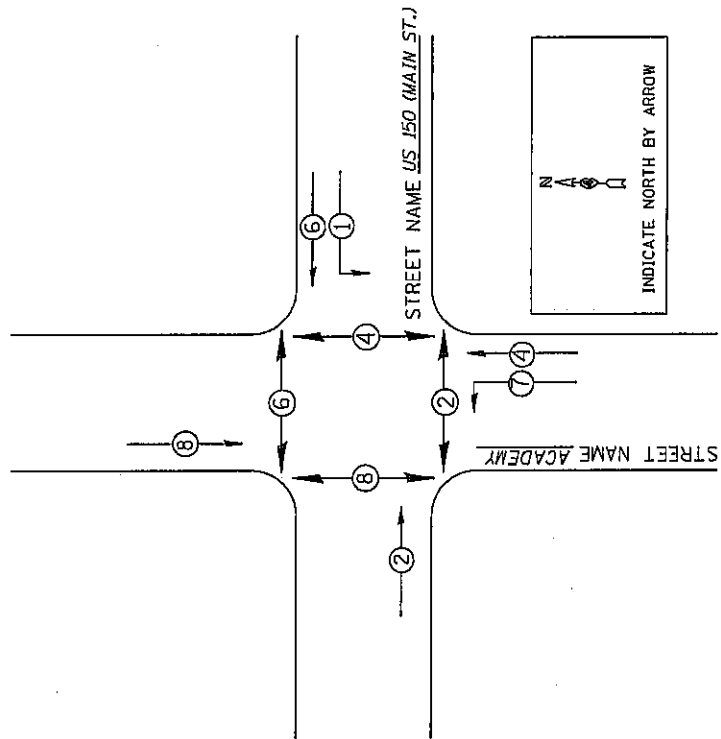
SCHEDULE OF QUANTITIES		
ITEM DESCRIPTION	UNIT	QUANTITY
FULL-ACTUATED CONTROLLER AND TYPE IV CABINET, SPECIAL	EACH	1.0
INDUCTIVE LOOP DETECTOR	EACH	9.0
PEDESTRIAN PUSHBUTTON	EACH	8.0
ELECTRIC CABLE IN CONDUIT, 1/C NO. 6, GROUND	FOOT	275.5
STEEL MAST ARM ASSEMBLY AND POLE, 26 FT. (SPECIAL)	EACH	1.0

PROPOSED TRAFFIC SIGNALS  
US 150 (MAIN ST.) & ACADEMY  
GALESBURG

REVISER  
SHEET 5/29/07

**PROPOSED PHASE DIAGRAM**

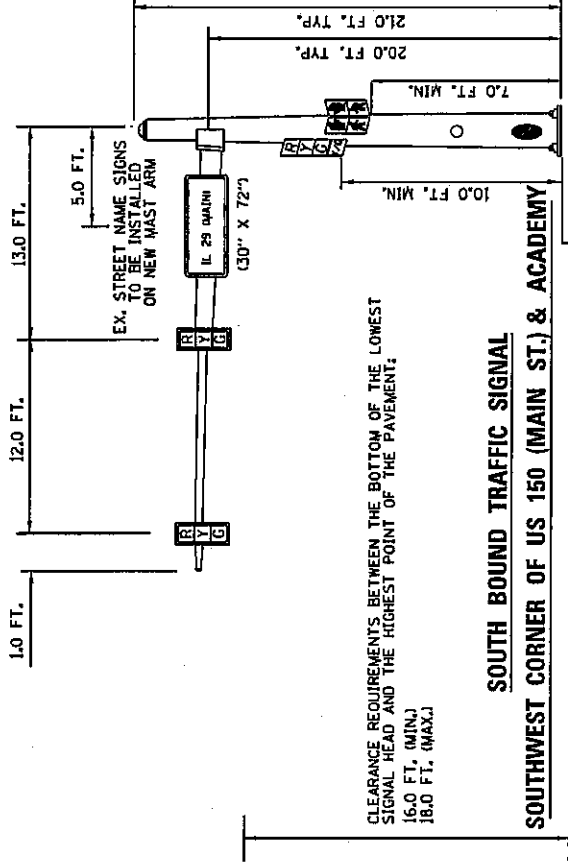
NAME OF INTERSECTION US 150 (MAIN ST.) & ACADEMY ST.  
CONTROLLER SPECIFIED 16 POSITION TS-1 LOAD BAY IN TYPE IV CABINET, ECONOLITE ASC/2S-2100 CONTROLLER



**LEGEND**  
 (1) VEHICULAR MOVEMENT  
 (2) PEDESTRIAN MOVEMENT  
 \* NUMBER REFERS TO ASSOCIATED PHASE

N  
A  
INDICATE NORTH BY ARROW

ROUTE		SECTION	COUNTY	SHEET
MKD.	DESIG.	D4 MISC. SIGNAL WORK 2008-1	KNOX	TOTAL
FAU 6845	US 150			8
				NO.
				8



CLEARANCE REQUIREMENTS BETWEEN THE BOTTOM OF THE LOWEST SIGNAL HEAD AND THE HIGHEST POINT OF THE PAVEMENT:  
16.0 FT. (MIN.)  
18.0 FT. (MAX.)

**CONSTRUCTION NOTES:**

1. THE MAST ARM ASSEMBLY AND POLE WILL BE SUPPLIED BY THE DEPARTMENT. THE CONTRACTOR SHALL PICK UP THE MAST ARM ASSEMBLY AND POLE FROM THE IDOT WAREHOUSE LOCATED AT 5500 W. RT. 150, EDWARDS IL AND TRANSPORT IT TO THE JOB SITE.
2. THE PROPOSED MAST ARM SHALL BE INSTALLED ON THE EXISTING CONCRETE FOUNDATION.
3. ALL STREET NAME SIGNS, SIGNAL HEADS, PEDESTRIAN HEADS, AND APPURTENANCES SHALL BE REMOVED FROM THE EXISTING MAST ARM AND INSTALLED ON THE PROPOSED MAST ARM. THE CONTRACTOR SHALL PROVIDE NEW BRACKETING AND ALL HARDWARE REQUIRED FOR INSTALLATION.
4. THE CONTRACTOR SHALL INSTALL STAINLESS STEEL OR ALUMINUM SCREENING AROUND THE ANCHOR BOLTS.
5. TRAFFIC SIGNAL HEADS SHALL BE CENTERED OVER THE THROUGH LANES AND MAINTAIN A 16 FT. MINIMUM CLEARANCE FROM THE HIGHEST POINT OF THE ROADWAY.
6. ALL COSTS (LABOR, MATERIALS, AND EQUIPMENT) ASSOCIATED WITH THESE REQUIREMENTS SHALL BE INCLUDED IN THE CONTRACT UNIT PRICE FOR STEEL MAST ARM ASSEMBLY AND POLE, 26 FT. (SPECIAL). THERE WILL BE NO ADDITIONAL COMPENSATION FOR THIS WORK.

**REVISION**  
SHEET 5/29/07

PROPOSED  
MAST ARM DETAIL  
US 150 & ACADEMY  
GALESBURG