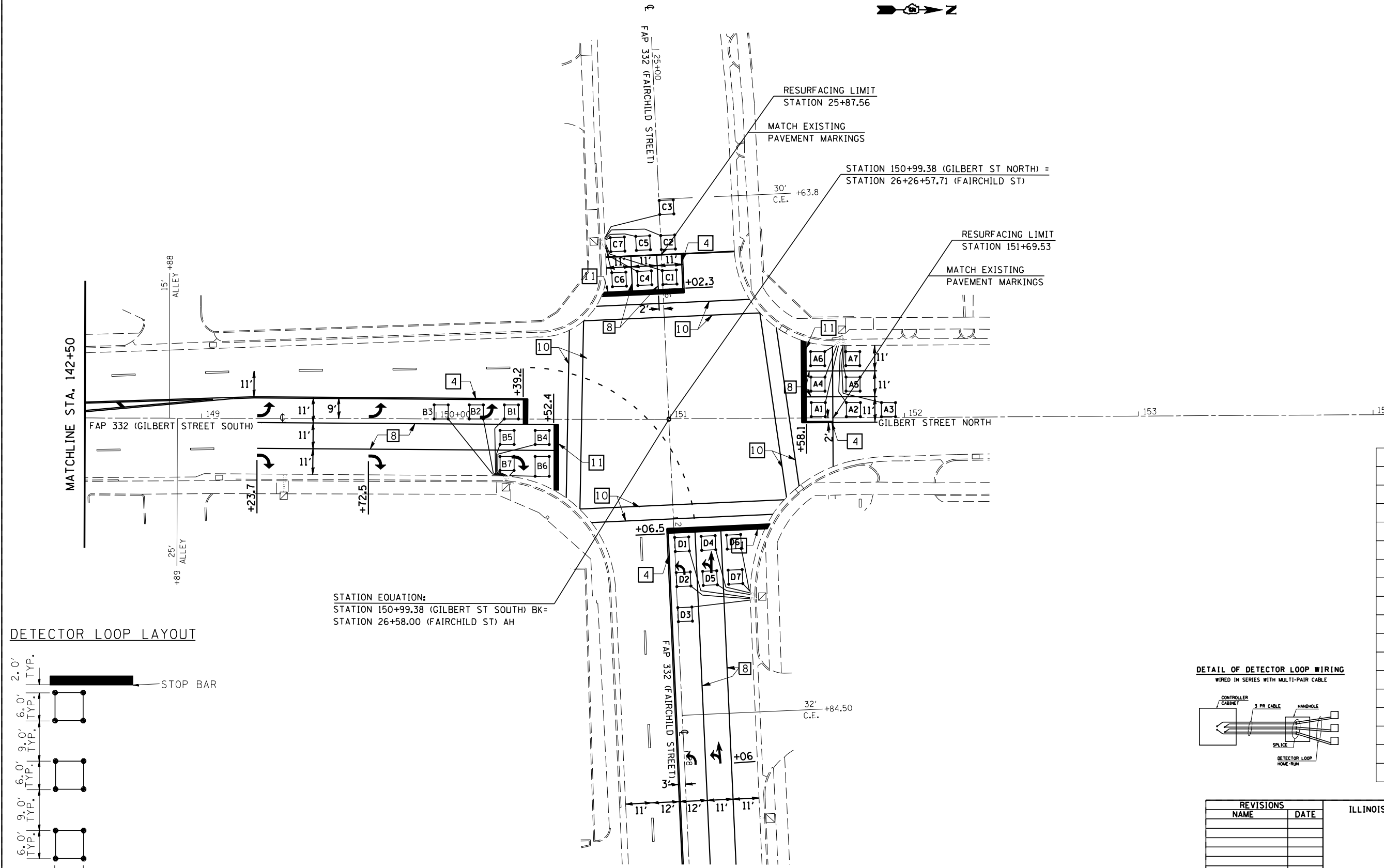


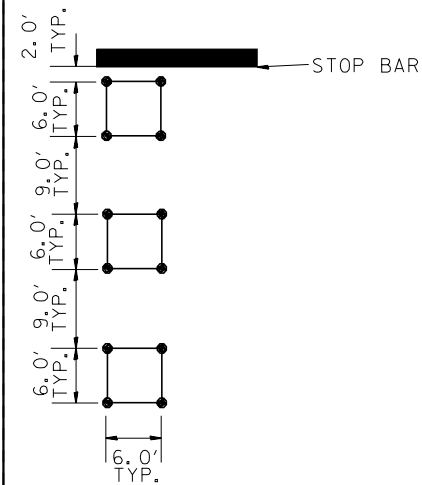
T 19 N, R 11 W, SEC. 5, 2ND P.M.

CONTRACT NO. 70185				
F.A.P. RTE.	SECTION	COUNTY	TOTAL SHEETS	SHEET NO.
332	.	VERMILION	62	38
STA. 142+50		TO STA. 28+00		
FED. ROAD DIST. NO.		ILLINOIS FED. AID PROJECT		
+147Z-3)RS-1 & (52CS,48Z-1)RS-3				



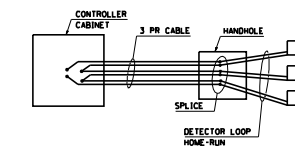
STATION EQUATION:  
 STATION 150+99.38 (GILBERT ST SOUTH) BK=  
 STATION 26+58.00 (FAIRCHILD ST) AH

DETECTOR LOOP LAYOUT



DETECTOR LOOP DATA		
GILBERT ST. & FAIRCHILD ST.		
LOOP	SIZE	TURNS
A1-3	6' X 6'	4
A4-5	6' X 6'	3
A6-7	6' X 6'	3
B1-3	6' X 6'	4
B4-5	6' X 6'	4
B6	6' X 8.5'	3
B7	6' X 6'	3
B8-9	6' X 6'	5
C1-3	6' X 6'	4
C4-5	6' X 6'	4
C6-7	6' X 6'	4
D1-3	6' X 6'	3
D4-5	6' X 6'	3
D6-7	6' X 6'	3
D8-9	6' X 6'	5

DETAIL OF DETECTOR LOOP WIRING  
 WIRED IN SERIES WITH MULTI-PAIR CABLE



REVISIONS	
NAME	DATE

ILLINOIS DEPARTMENT OF TRANSPORTATION

ROADWAY PLANS

SCALE: VERT.  
 HORIZ.  
 DATE

DRAWN BY  
 CHECKED BY

PLOT DATE = 3/27/2007  
 FILE NAME = c:\projects\4593881\c81\atv\riping.dgn  
 PLOT SCALE = 42,352% / IN.  
 USER NAME = cecollrt