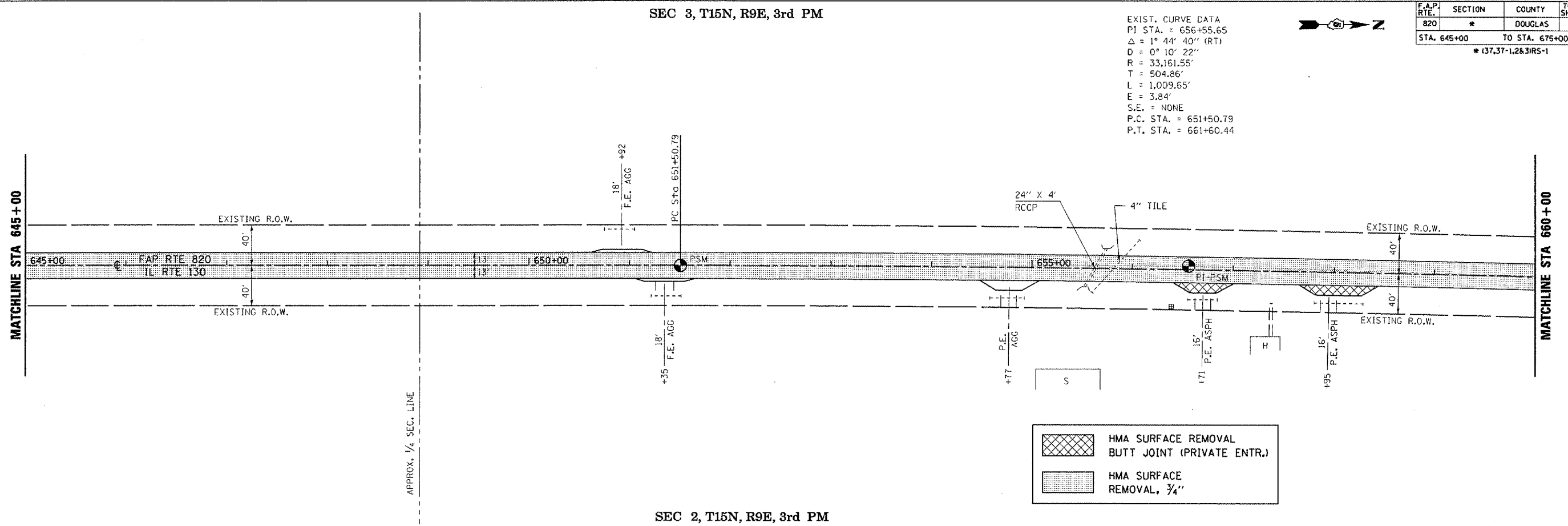


F.A.P. RTE.	SECTION	COUNTY	TOTAL SHEETS	SHEET NO.
820	*	DOUGLAS	57	42
STA. 645+00		TO STA. 675+00		
* 137,37-1,2&3RS-1				

EXIST. CURVE DATA
 PI STA. = 656+55.65
 $\Delta = 1^\circ 44' 40''$ (RT)
 $D = 0^\circ 10' 22''$
 $R = 33,161.55'$
 $T = 504.86'$
 $L = 1,009.65'$
 $E = 3.84'$
 $S.E. = \text{NONE}$
 $P.C. STA. = 651+50.79$
 $P.T. STA. = 661+60.44$

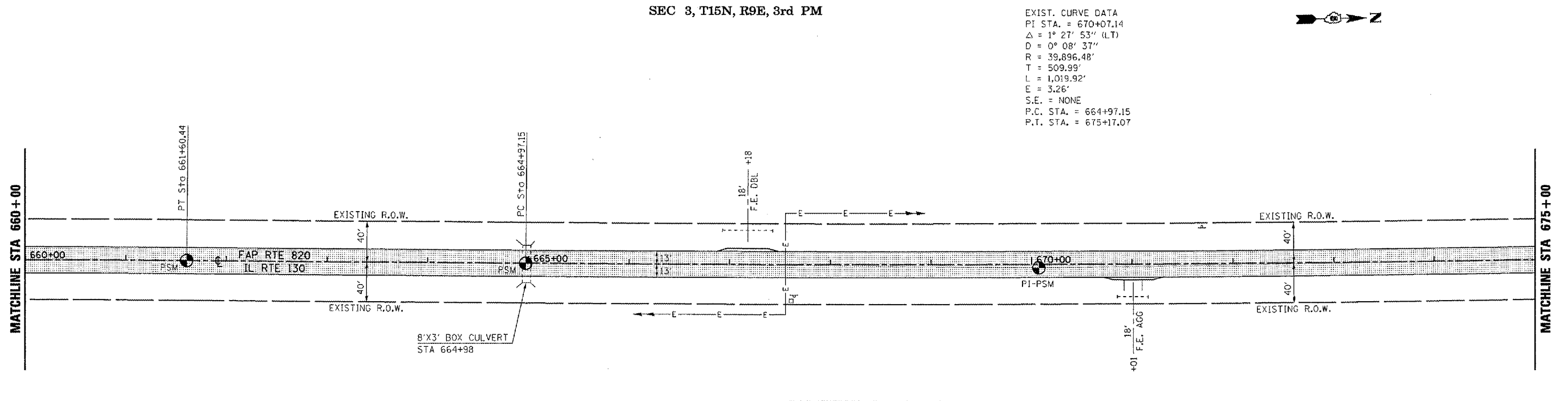


	HMA SURFACE REMOVAL BUTT JOINT (PRIVATE ENTR.)
	HMA SURFACE REMOVAL, 3/4\"

SEC 2, T15N, R9E, 3rd PM

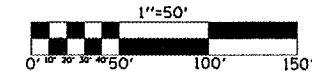
SEC 3, T15N, R9E, 3rd PM

EXIST. CURVE DATA
 PI STA. = 670+07.14
 $\Delta = 1^\circ 27' 53''$ (LT)
 $D = 0^\circ 08' 37''$
 $R = 39,896.48'$
 $T = 509.99'$
 $L = 1,019.92'$
 $E = 3.26'$
 $S.E. = \text{NONE}$
 $P.C. STA. = 664+97.15$
 $P.T. STA. = 675+17.07$



	HMA SURFACE REMOVAL, 3/4\"
--	----------------------------

SEC 2, T15N, R9E, 3rd PM



ILLINOIS DEPARTMENT OF TRANSPORTATION
PLAN VIEW
F.A.P. ROUTE 820 (IL 130)
SECTION (37,37-1,2&3)RS-1
DOUGLAS COUNTY
 SCALE: 1" = 50'
 DATE: 12/28/06
 DRAWN BY: JRP
 CHECKED BY:

STA 645+00 TO STA 675+00

PLOT DATE = 3/26/2007
 FILE NAME = c:\p\projects\0507002\081\7002-reference.dgn
 PLOT SCALE = 105,8824 "/>