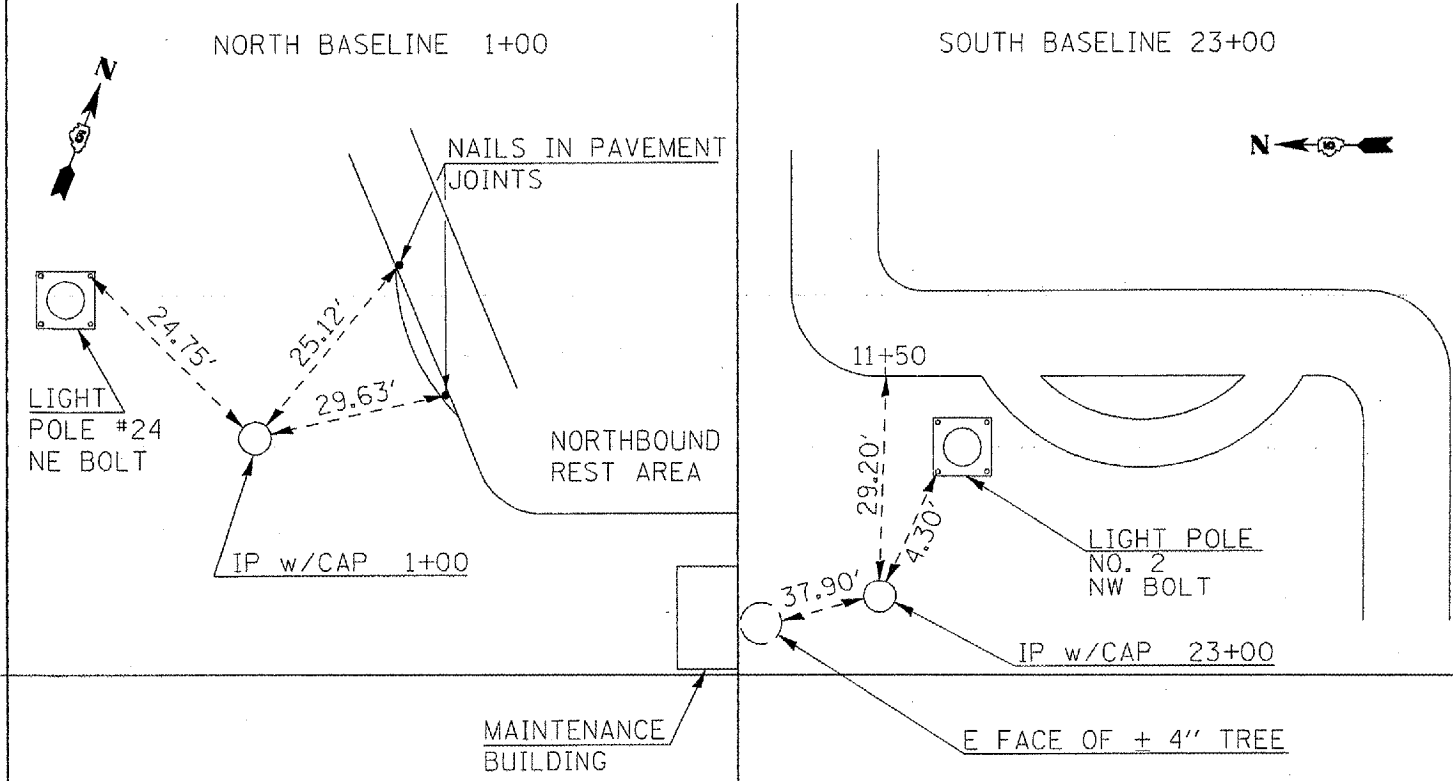


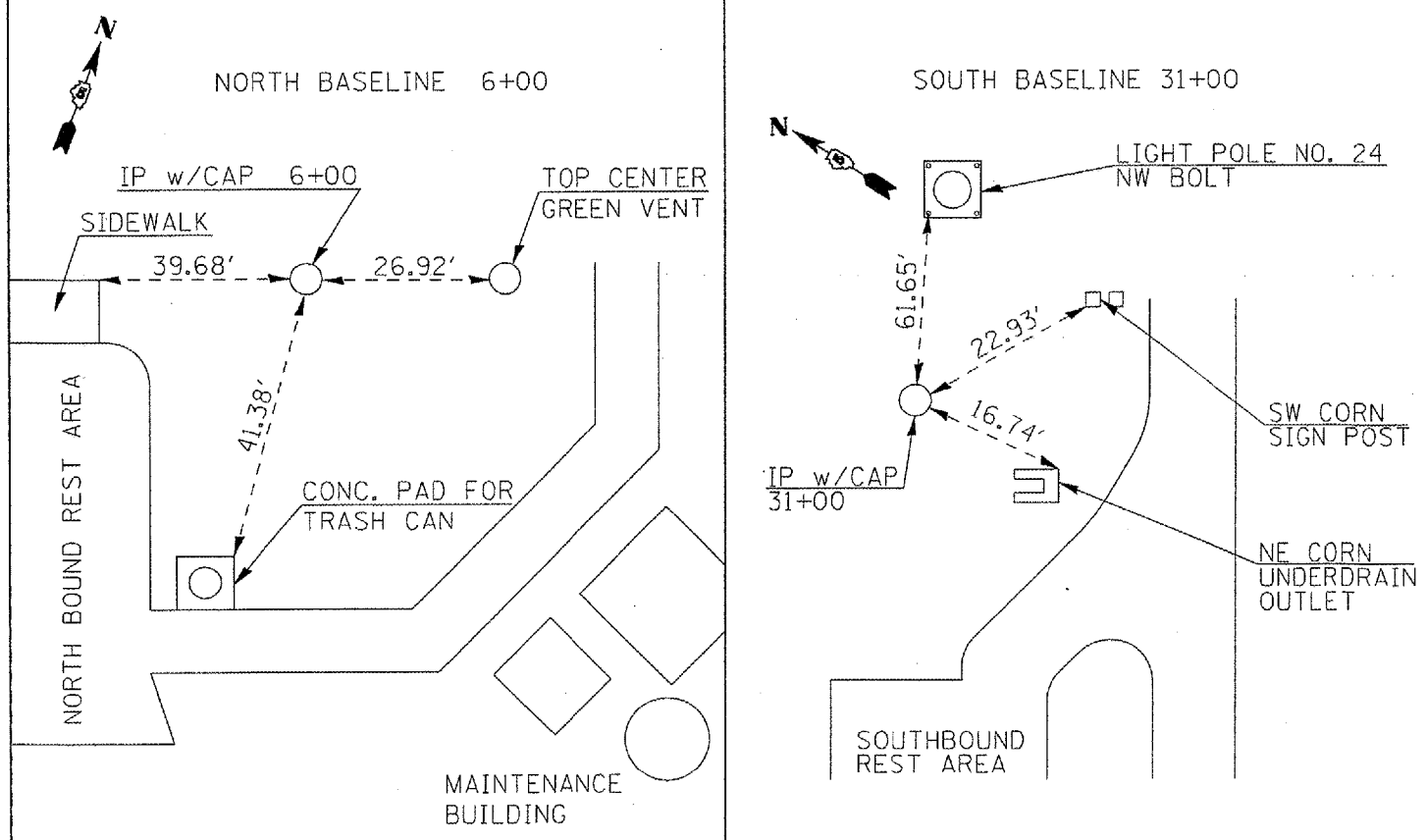
CONTRACT NO. T0626				
F.A.J. RTE.	SECTION	COUNTY	TOTAL SHEET NO.	
55	571RA-LJ	MCLEAN	12	6
STA.		TO STA.		
FED. ROAD DIST. NO.	ILLINOIS	FED. AID PROJECT		

**TIE POINTS**



**BILL OF MATERIALS**  
**FUNKS GROVE REST AREA LIGHTING**

ITEM	UNIT	QUANTITY
CONDUIT PUSHED, 3" DIA., GALVANIZED STEEL	FOOT	137
UNIT DUCT, 600V, 2-1C NO.2, 1/C NO.4 GROUND, (XLP-TYPE USE), 1 1/4" DIA. POLYETHYLENE	FOOT	1990
TRENCH AND BACKFILL FOR ELECTRICAL WORK	FOOT	1833
LUMINAIRE, SODIUM VAPOR, MULTI-MOUNT, 250 WATT	EACH	1
LUMINAIRE, SODIUM VAPOR, HIGH MAST, MULTI-MOUNT, 400 WATT	EACH	16
LIGHT POLE, WEATHERING STEEL, 45 FT. M.H., TENON MOUNT	EACH	1
LIGHT TOWER, 90 FT. MOUNTING HEIGHT, LUMINAIRE MT. - 8	EACH	2
LIGHT POLE FOUNDATION METAL, 15" BOLT CIRCLE, 8" X 6'	EACH	1
LIGHT TOWER FOUNDATION, 48" DIAMETER	FOOT	35
REMOVAL OF EXISTING LIGHTING UNIT, NO SALVAGE	EACH	2
LIGHTING FOUNDATION REMOVAL	EACH	2



**PLAN NOTES**

1. LOCKNUTS WITH NYLON OR METAL INSERTS SHALL BE USED ON TOWERS TO DETER THE REMOVAL OF NUTS BY VANDALISM. THE ANCHOR RODS SHALL NOT BE PEENED UNLESS SPECIFICALLY APPROVED BY THE ENGINEER. LOCKNUTS SHALL NOT BE REQUIRED FOR FLAIR TYPE BASES.
2. PROVIDE NEW CONDUCTORS TO EXISTING CONTROLLER AND CONNECT TO EXISTING FEEDER BREAKER. THE INSTALLATION OF CONDUCTORS INSIDE THE BUILDING AND CONNECTION TO FEEDER BREAKERS SHALL BE CONSIDERED AS INCLUDED IN THE CONTRACT UNIT COST FOR THE UNIT DUCT SPECIFIED.
3. RECONNECT EXISTING LIGHTING CIRCUIT AT POLE #2 AND POLE #38.
4. IN LIEU OF INSTALLING NEW UNIT DUCT AND/OR PUSHING NEW STEEL CONDUIT, THE CONTRACTOR MAY PULL NEW CONDUCTORS INTO THE EXISTING UNIT DUCT WITH THE APPROVAL OF THE ENGINEER.
5. PROVIDE AND INSTALL POLE IDENTIFICATION AS DIRECTED BY THE ENGINEER

REVISIONS	
NAME	DATE

ILLINOIS DEPARTMENT OF TRANSPORTATION

SCALE: VERT. \_\_\_\_\_  
 HORIZ. \_\_\_\_\_

DATE \_\_\_\_\_ DRAWN BY \_\_\_\_\_  
 CHECKED BY \_\_\_\_\_

PLOT DATE = 3/21/2007  
 FILE NAME = c:\projects\10626\10626.dwg  
 USER NAME = [redacted]