

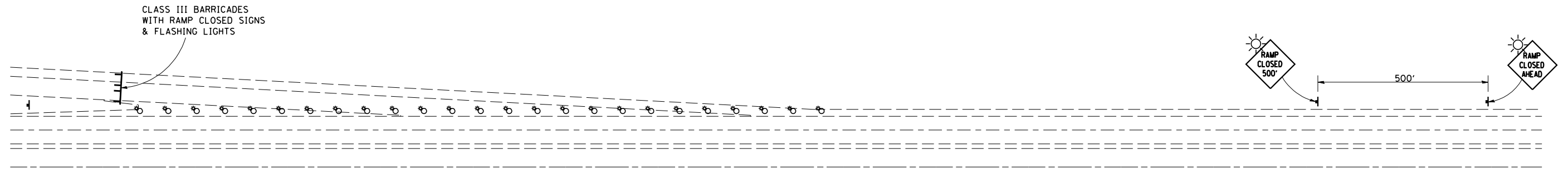
F.A.I. RTE.	SECTION	COUNTY	TOTAL SHEETS	SHEET NO.
55	57(RA-L)	MCLEAN	12	11

SYMBOLS

- ⊙ TYPE I OR II BARRICADES OR DRUMS @ 25' (7.5 m) CTS. W/STEADY BURNING LIGHTS
- ⊣ SIGN ON PORTABLE OR PERMANENT SUPPORT

Traffic Control for all ramps shall be in accordance with the appropriate application of plan detail TRAFFIC CONTROL FOR RAMPS and shall be paid for at the contract lump sum price for Traffic Control for Ramps.

**RAMP CLOSURE**



GENERAL NOTES

STEADY BURN LIGHTS ARE NOT REQUIRED FOR DAYTIME OPERATIONS.  
 CONTACT THE DISTRICT TRAFFIC OPERATIONS ENGINEER  
 AT 217-465-4181, TWO WEEKS PRIOR TO CLOSING THE RAMP.

Note: All dimensions are in INCHES (millimeters) unless otherwise shown.

DATE	REVISIONS	NAME	ILLINOIS DEPARTMENT OF TRANSPORTATION
			<b>TRAFFIC CONTROL FOR RAMPS</b>