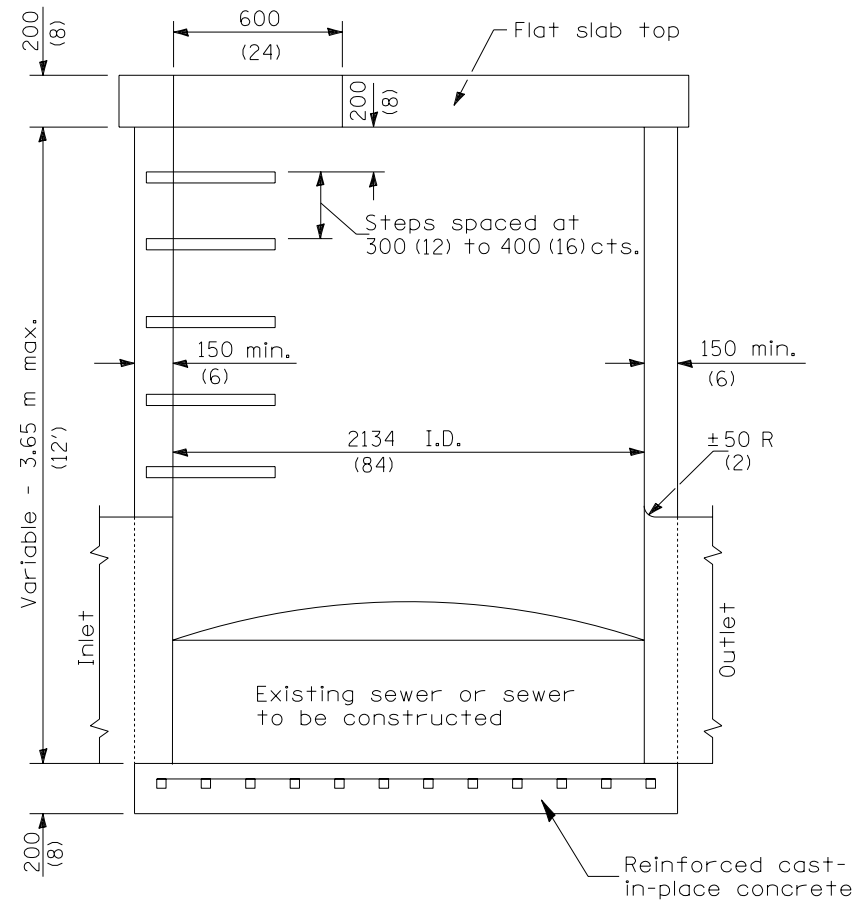
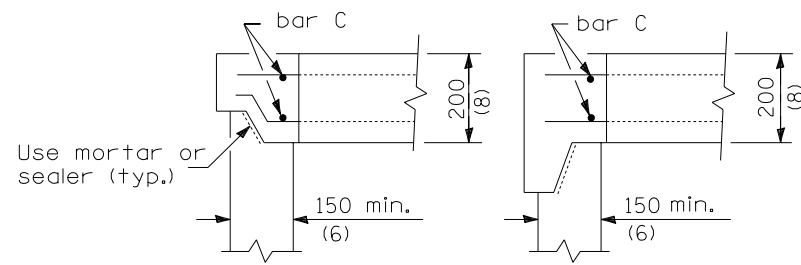


F.A.I. RTE.	SECTION	COUNTY	TOTAL SHEETS	SHEET NO.
57	•	••	153	55
STA.		TO STA.		
FED. ROAD DIST. NO.	ILLINOIS	FED. AID PROJECT		
• D5 SAFETY IMPROVEMENT 2007-2				
•• CHAMPAIGN, COLES, & DOUGLAS				

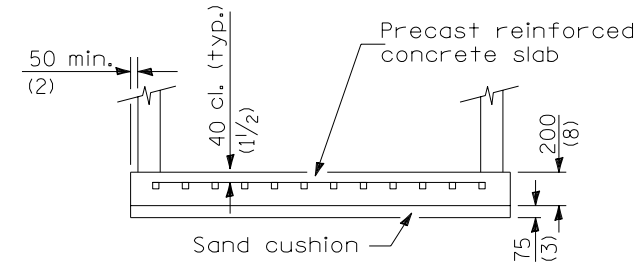
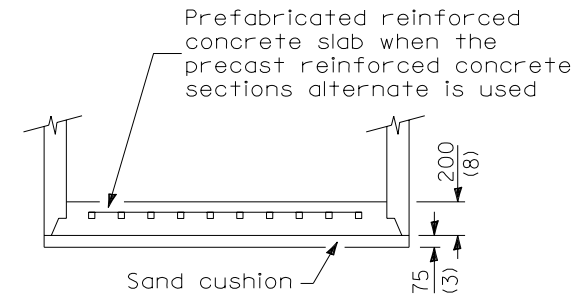
DETAIL OF RESTRICTED DEPTH MANHOLE 7' DIAMETER, TYPE 1 FRAME, CLOSED LID



ELEVATION



ALTERNATE JOINT CONFIGURATIONS



ALTERNATE BOTTOM SLAB

ALTERNATE MATERIALS FOR WALLS	T (min)
Concrete Masonry Units	125 (5)
Precast Reinforced Concrete Sections	100 (4)
Cast-in-Place Concrete	150 (6)

GENERAL NOTES

Depth of manhole shall be verified in the field by the Engineer.

Joint configuration and dimensions of flat slab top shall match and fit the riser joint detail.

Lifting devices shall be approved by the Engineer.

See Standard 602701 for details of cast iron steps.

All dimensions are in millimeters (inches) unless otherwise shown.

PLOT DATE = 3/30/2007
 FILE NAME = c:\projects\70628\70628derails.dgn
 PLOT SCALE = 42.3523 / IN.
 USER NAME = pier-sonbr

ILLINOIS DEPARTMENT OF TRANSPORTATION
**DETAIL OF RESTRICTED DEPTH
 MANHOLE CLOSED LID**
 F.A.I. ROUTE 57 (I-57)
 SECTION 07SAFETY
 DOUGLAS AND CHAMPAIGN COUNTIES
 SCALE: NOT TO SCALE DRAWN BY: B.B.P.
 DATE: 03/21/07 CHECKED BY: M.L.B.