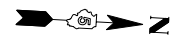
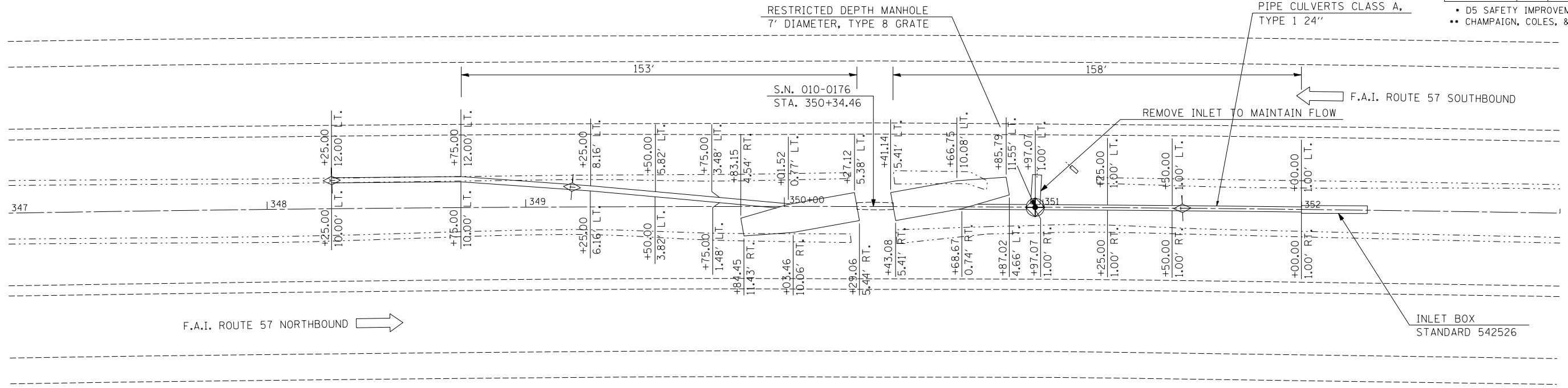


F.A.I. RTE.	SECTION	COUNTY	TOTAL SHEETS	SHEET NO.
57	.	..	153	74
STA. 347+00.00		TO STA. 353+00.00		
FED. ROAD DIST. NO.		ILLINOIS FED. AID PROJECT		
<ul style="list-style-type: none"> • D5 SAFETY IMPROVEMENT 2007-2 • CHAMPAIGN, COLES, & DOUGLAS 				

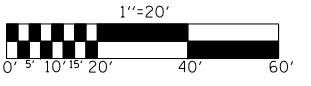


PLAN	SURVEYED	BY	DATE
NOTE BOOK NO.	PLOTTED		
	RT. OF WAY CHECKED		
	CADD FILE NAME		



EXIST. CURVE 51
 PI STA. = 350+44.91
 Δ = 5° 06' 27" (RT)
 D = 0° 19' 52"
 R = 17,300.03'
 T = 771.58'
 L = 1,542.14'
 E = 17.20'
 e = ----
 T.R. = ----
 S.E. RUN = ----
 P.C. STA. = 342+73.33
 P.T. STA. = 358+15.47

NOTE
 PIPE UNDERDRAINS 4" SHALL BE EXTENDED TO FLOW LINE OR NEAREST INLET. THE PIPE UNDERDRAIN HEADWALLS SHALL BE INCIDENTAL TO PIPE UNDERDRAINS 4".



PROFILE	SURVEYED	BY	DATE
NOTE BOOK NO.	PLOTTED		
	STRUCTURE NOTATIONS CHKD		

PLOT DATE = 3/30/2007
 FILE NAME = c:\projects\4514406 (v8)\010_0176\0176_impot1...
 PLOT SCALE = 42.3529' / IN.
 USER NAME = plersomb

