

72798

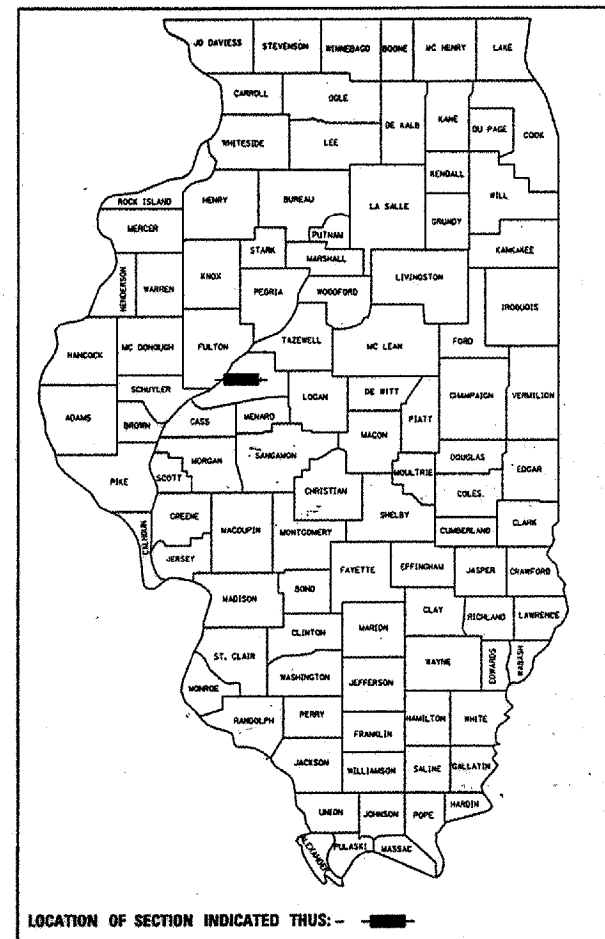
F.A.P. RTE.	SECTION	COUNTY	TOTAL SHEETS	SHEET NO.
315	(1,2)RS-4	MASON	44	1

STATE OF ILLINOIS
DEPARTMENT OF TRANSPORTATION
DIVISION OF HIGHWAYS

**PROPOSED
HIGHWAY PLANS**

F.A.P. ROUTE 315 (US 136) PROJECT: NHF-0315 (049)
SECTION (1,2)RS-4
MASON COUNTY
C-96-564-07

D-96-530-03

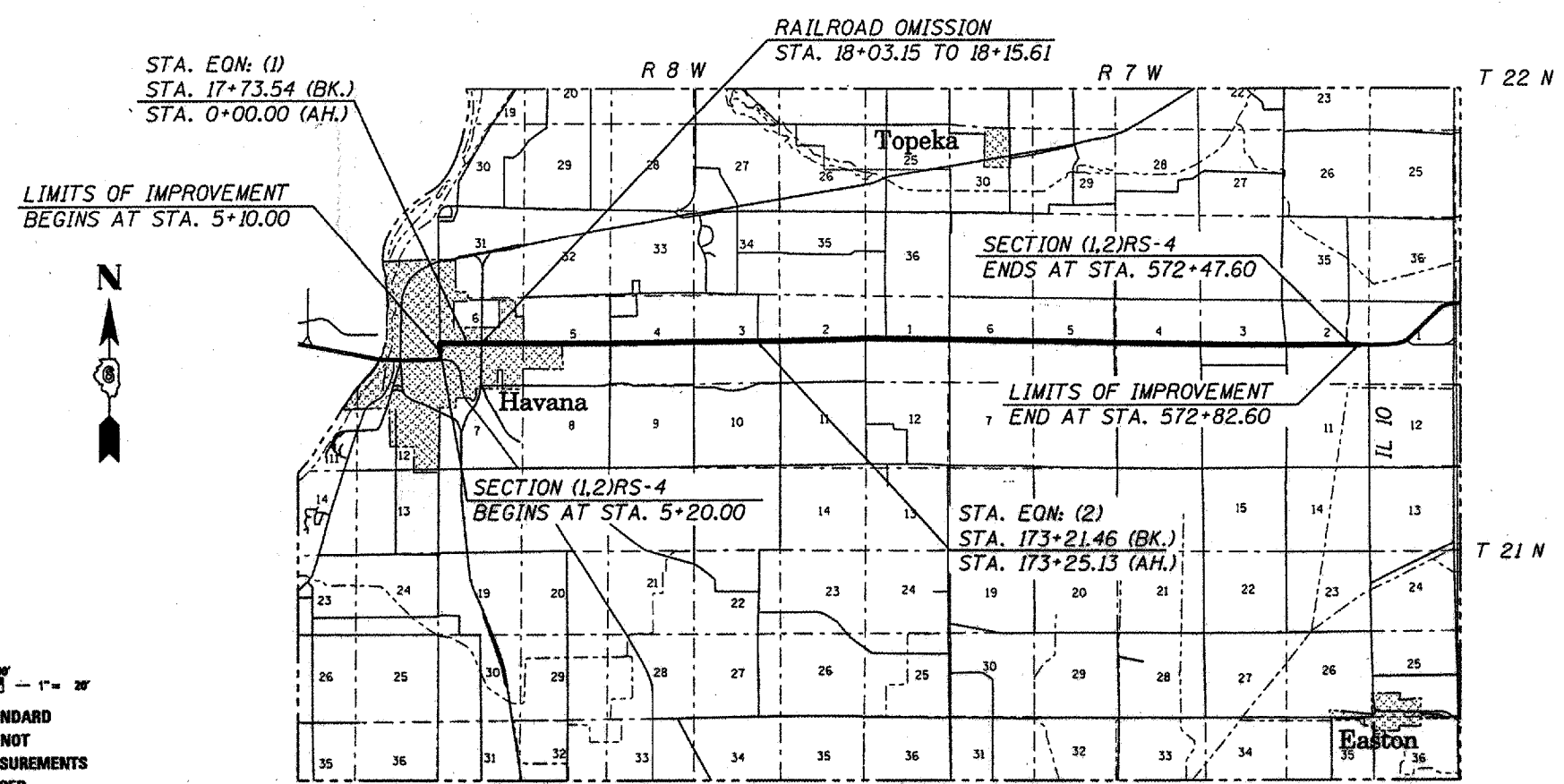


FOR INDEX OF SHEETS, SEE SHEET NO. 2

HIGHWAY CLASSIFICATION

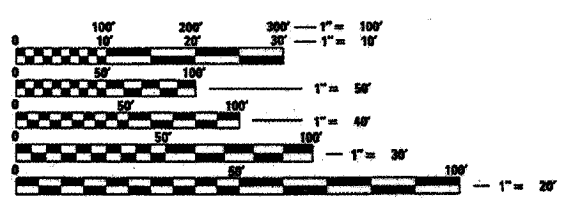
F.A.P. Route 315 (US 136)
OTHER PRINCIPLE ARTERIAL

A.D.T. - 2,600 (2005) PV = 68.0%
A.D.T. - 3,200 (2025) SU = 8.0%
DESIGN SPEED - 55 mph MU = 24.0%
POSTED SPEED - 55 mph



LOCATION MAP

GROSS LENGTH = 58,465.46 ft. = 11.07 mi.
NET LENGTH = 58,530.46 ft. = 11.09 mi.



FULL SIZE PLANS HAVE BEEN PREPARED USING STANDARD ENGINEERING SCALES. REDUCED SIZED PLANS WILL NOT CONFORM TO STANDARD SCALES. IN MAKING MEASUREMENTS ON REDUCED PLANS, THE ABOVE SCALES MAY BE USED.

J.U.L.I.E.
JOINT UTILITY LOCATION INFORMATION FOR EXCAVATION
1-800-892-0123

CONTRACT NO. 72798

STATE OF ILLINOIS
DEPARTMENT OF TRANSPORTATION
DIVISION OF HIGHWAYS

SUBMITTED **3/22/07**
Quint H. Zed
DISTRICT ENGINEER

May 11, 2007
Paul E. Harp
ENGINEER OF DESIGN AND ENVIRONMENT

May 11, 2007
Milton R. See
DIRECTOR, DIVISION OF HIGHWAYS

PRINTED BY THE AUTHORITY
OF THE STATE OF ILLINOIS

PROJECT ENGINEER: SAL MADONIA (217) 782-4761
 SQUAD LEADER: RENE CABRERA (217) 557-9062
 JONATHAN COX