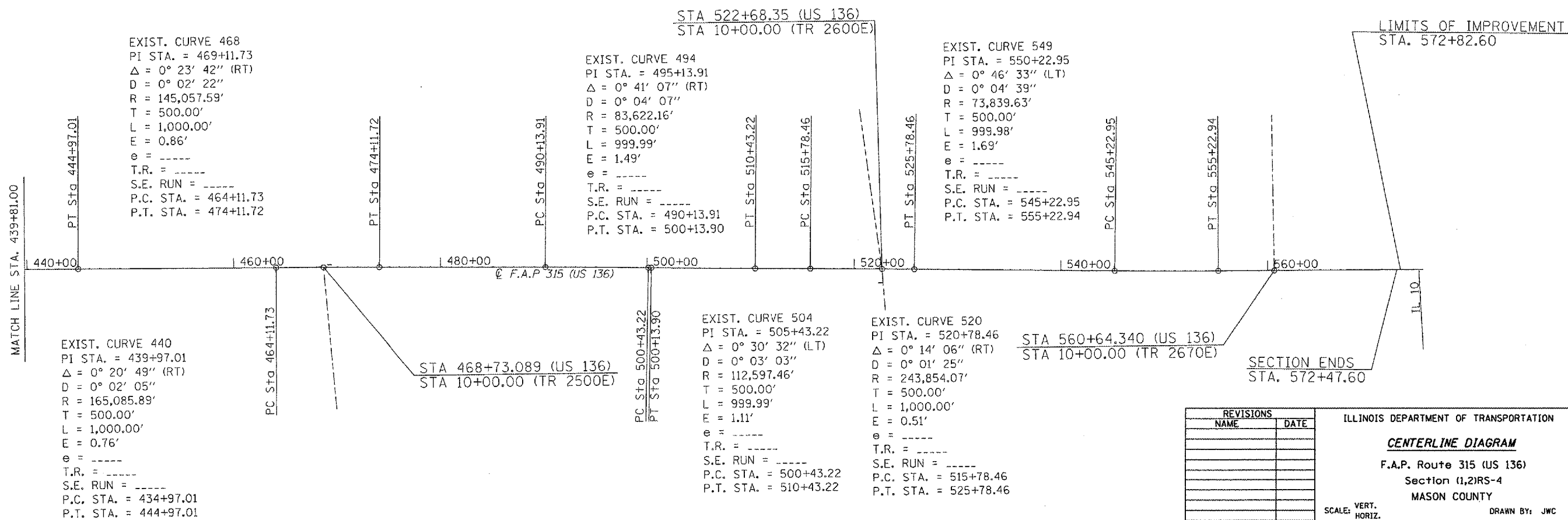
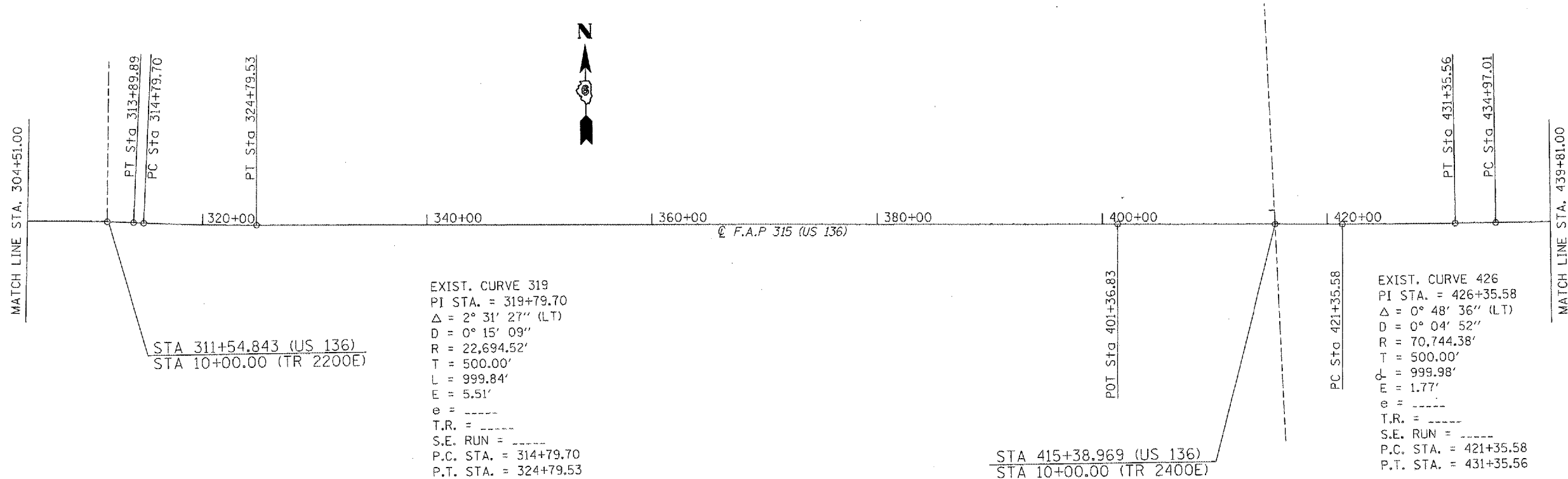


CONTRACT NO. 72798

F.A.P. RTE.	SECTION	COUNTY	TOTAL SHEETS	SHEET NO.
315	(1,2)RS-4	MASON	44	19
STA. 304+51.00		TO STA. 572+82.60		
FED. ROAD DIST. NO.		ILLINOIS FED. AID PROJECT		



PLOT DATE = 3/22/2007  
 PLOT SCALE = 1/8" = 100' / IN.  
 USER NAME = csh

REVISIONS	
NAME	DATE

ILLINOIS DEPARTMENT OF TRANSPORTATION  
**CENTERLINE DIAGRAM**  
 F.A.P. Route 315 (US 136)  
 Section (1,2)RS-4  
 MASON COUNTY  
 VERT. SCALE: HORIZ. SCALE: HORIZ. DATE: FEBRUARY 27, 2007  
 DRAWN BY: JWC  
 CHECKED BY: RSC