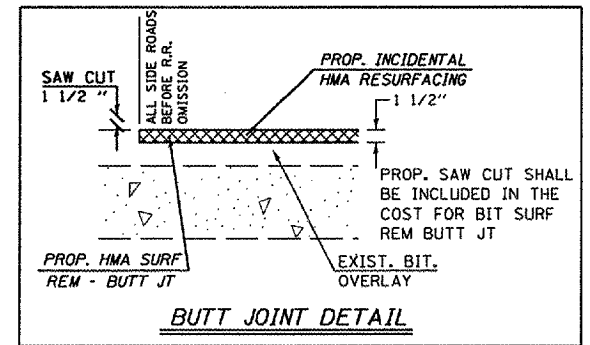
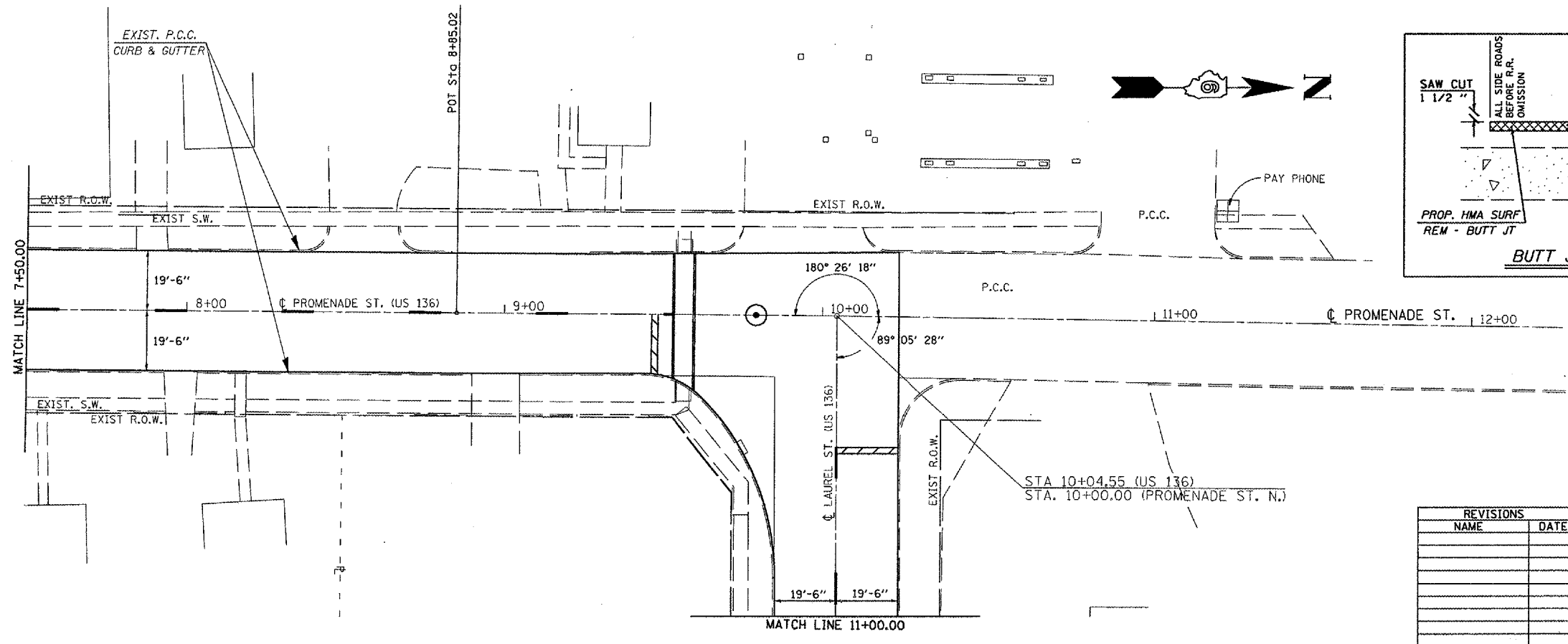
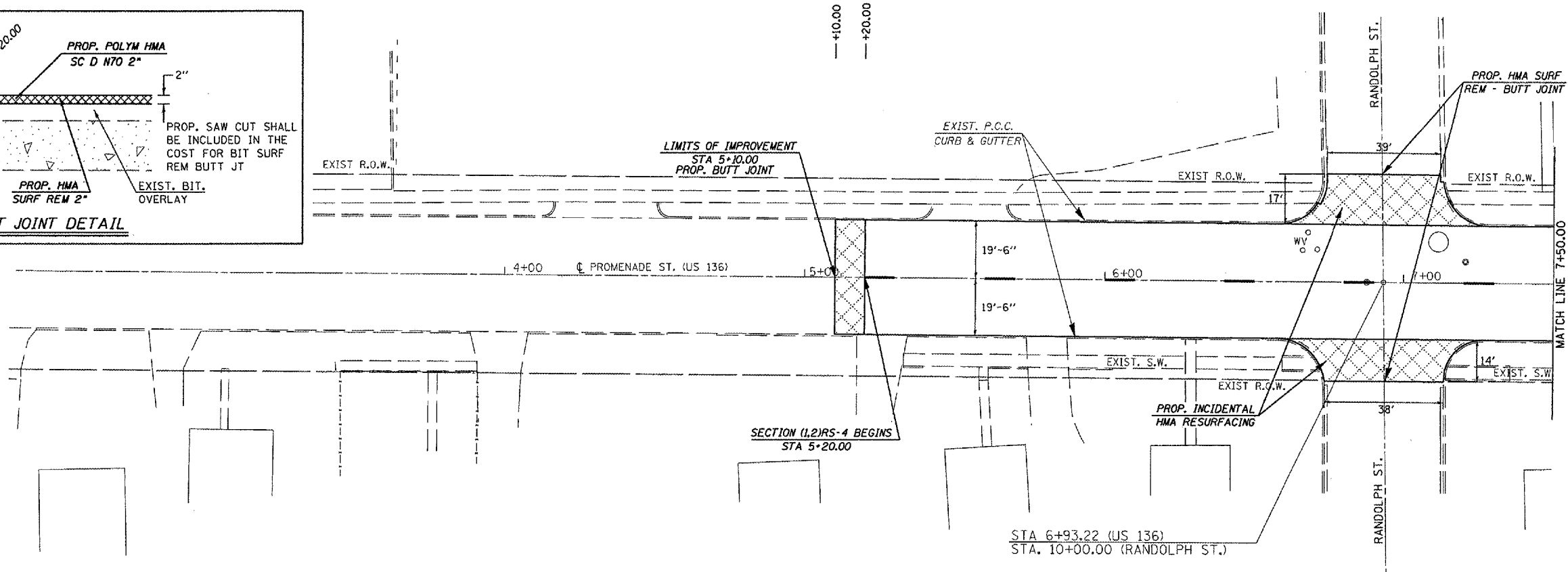
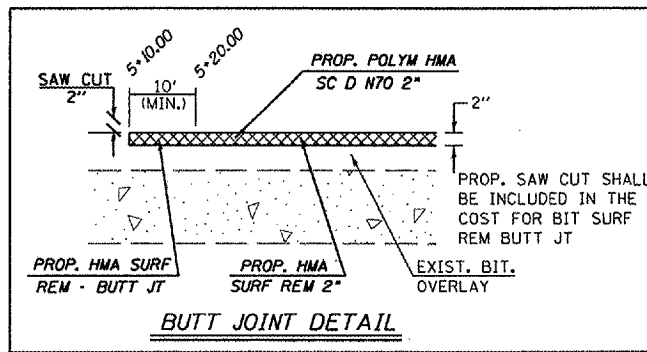


F.A.P. RTE.	SECTION	COUNTY	TOTAL SHEETS	SHEET NO.
315	(1,2)RS-4	MASON	44	20
STA. 5+10.00		TO STA. 11+00.00		
FED. ROAD DIST. NO.		ILLINOIS	FED. AID PROJECT	



REVISIONS	
NAME	DATE

ILLINOIS DEPARTMENT OF TRANSPORTATION

PLAN VIEW

F.A.P. Route 315 (US 136)
Section (1,2)RS-4
MASON COUNTY

SCALE: VERT. HORIZ. DATE: MARCH 19, 2007

DRAWN BY: JWC
CHECKED BY: RSC

PLOT DATE = 3/22/2007
PLOT FILE = I:\PROJECTS\72798\72798.plt
PLOT SCALE = 40,000:1
USER NAME = jwc