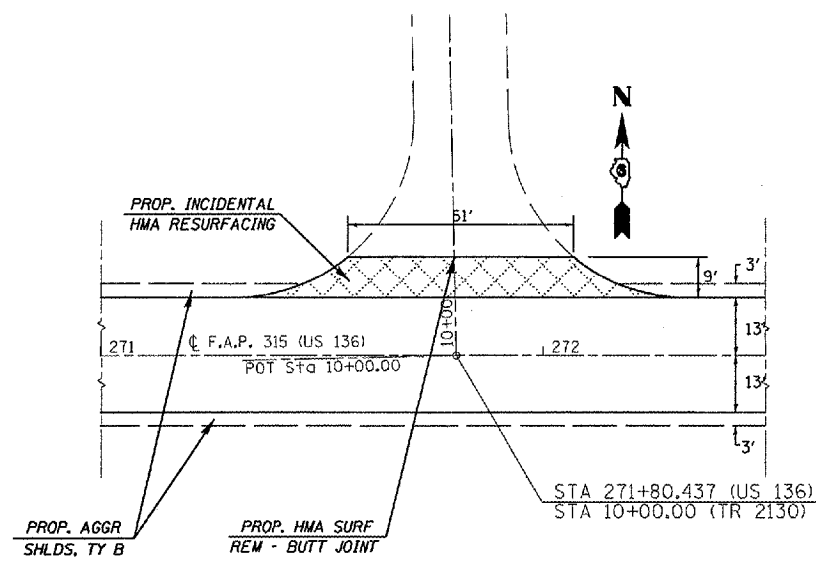


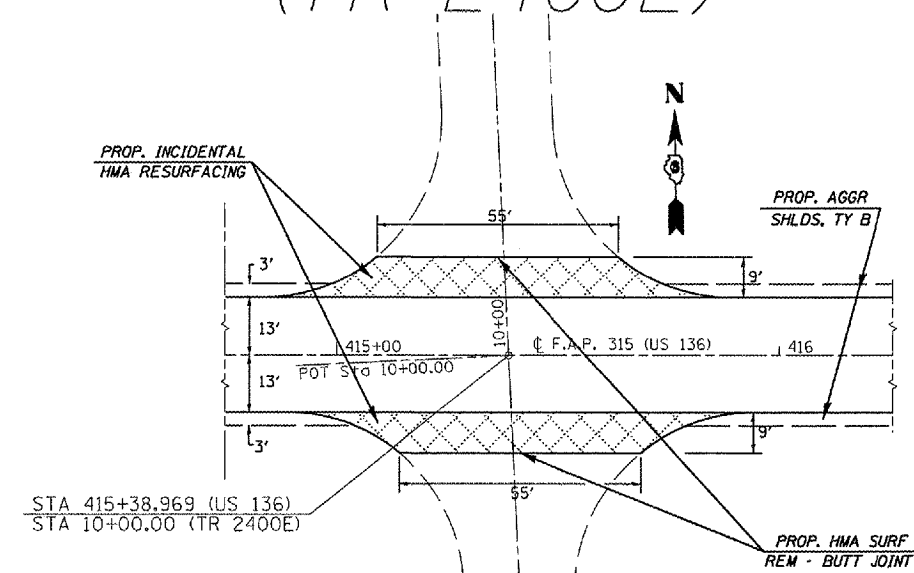
CONTRACT NO. 72798

F.A.P. RTE.	SECTION	COUNTY	TOTAL SHEETS	SHEET NO.
315	(1,2)RS-4	MASON	44	30
STA. 271+00.00		TO STA. 470+00.00		
FED. ROAD DIST. NO.		ILLINOIS FED. AID PROJECT		

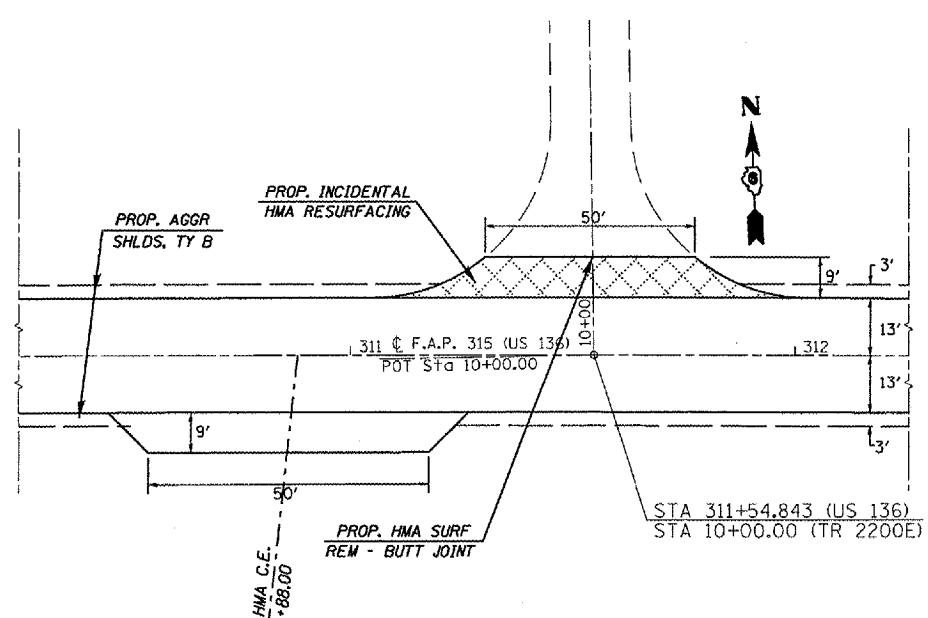
(TR 2130E)



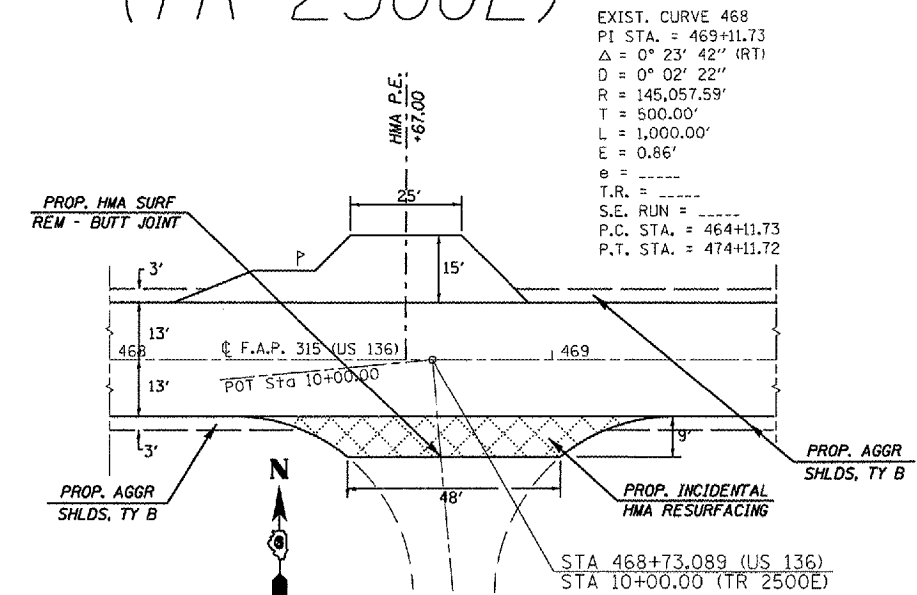
(TR 2400E)



(TR 2200E)



(TR 2500E)



EXIST. CURVE 468
 PI STA. = 469+11.73
 $\Delta = 0^\circ 23' 42''$ (RT)
 $D = 0^\circ 02' 22''$
 $R = 145,057.59'$
 $T = 500.00'$
 $L = 1,000.00'$
 $E = 0.86'$
 $e = \text{---}$
 $T.R. = \text{---}$
 $S.E. \text{ RUN} = \text{---}$
 P.C. STA. = 464+11.73
 P.T. STA. = 474+11.72

REVISIONS	
NAME	DATE

ILLINOIS DEPARTMENT OF TRANSPORTATION
PLAN VIEW
 F.A.P. Route 315 (US 136)
 Section (1,2)RS-4
 MASON COUNTY
 SCALE: VERT. _____
 HORIZ. _____
 DATE: MARCH 1, 2007
 DRAWN BY: JWC
 CHECKED BY: RSC

PLOT DATE = 3/22/2007
 PLOT SCALE = 1/8" = 1' IN.
 USER NAME = csnj