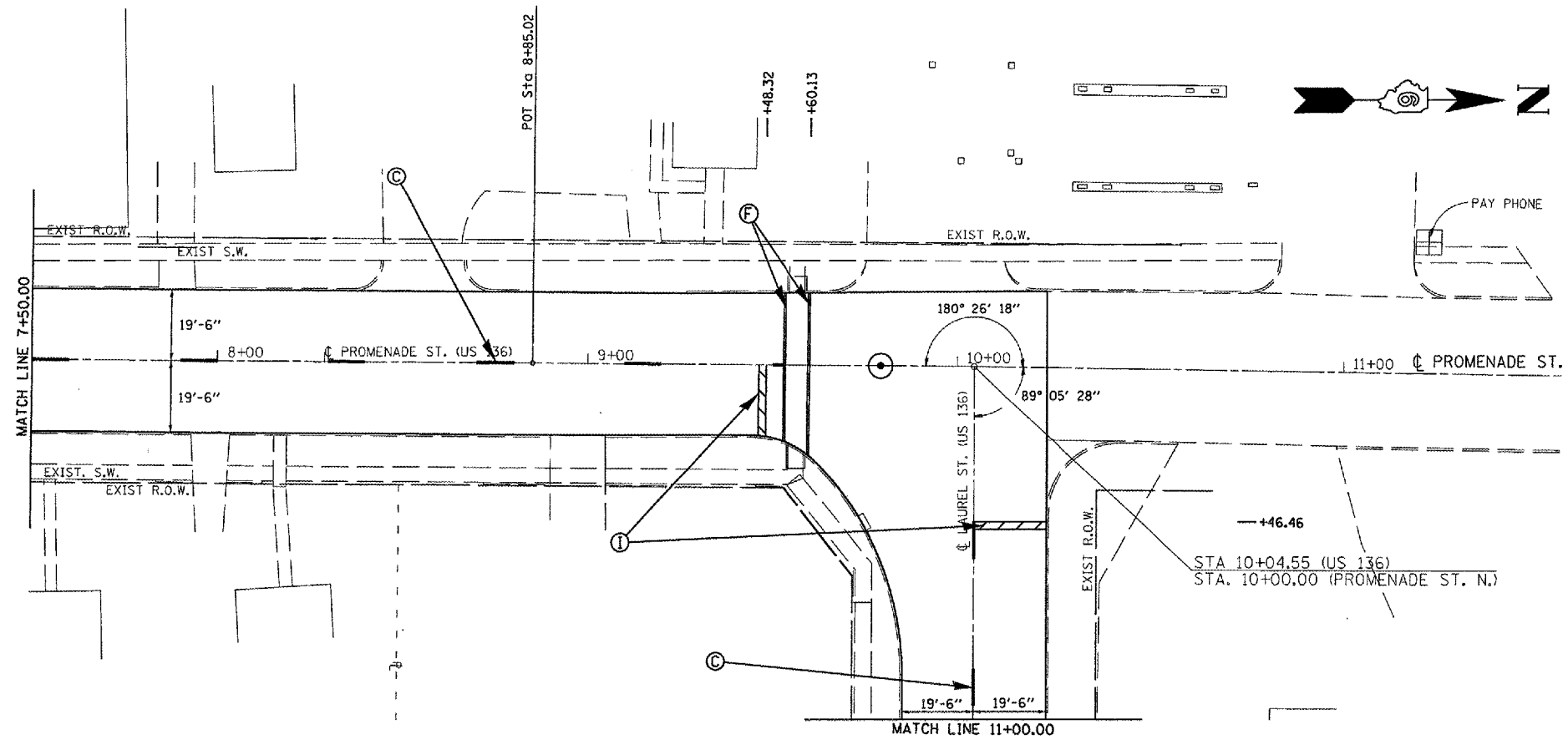
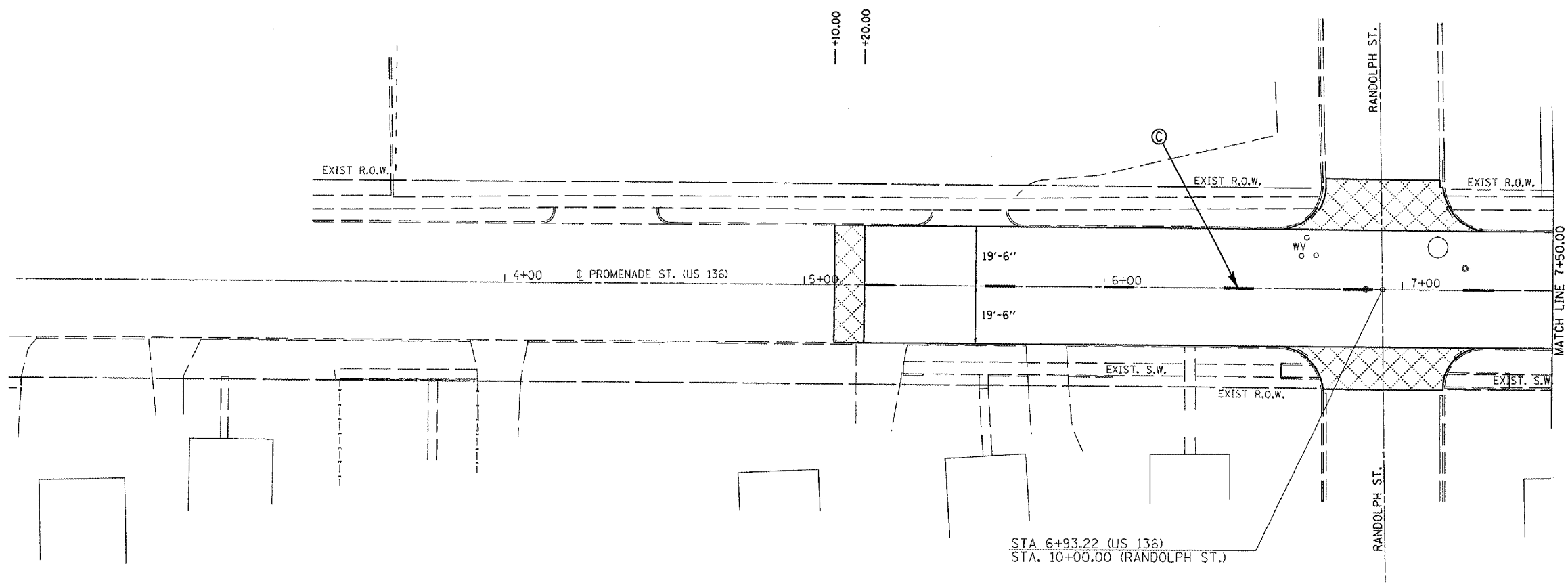


CONTRACT NO. 72798

F.A.P. RTE.	SECTION	COUNTY	TOTAL SHEETS	SHEET NO.
315	(1,2)RS-4	MASON	44	33
STA. 5+10.00		TO STA. 11+00.00		
FED. ROAD DIST. NO.		ILLINOIS	FED. AID PROJECT	



PAVEMENT MARKING LEGEND	
<i>(THERMOPLASTIC)</i>	
(A)	PAVEMENT MARKING - LINE - 5" WHITE (SOLID)
(B)	PAVEMENT MARKING - LINE - 5" YELLOW (SOLID)
(C)	PAVEMENT MARKING - LINE - 5" YELLOW (SKIP-DASH)
(D)	PAVEMENT MARKING - LINE - 5" DOUBLE YELLOW (SOLID)
(E)	PAVEMENT MARKING - LINE - 6" WHITE (SKIP - DASH)
(F)	PAVEMENT MARKING - LINE - 6" WHITE (SOLID)
(G)	PAVEMENT MARKING - LINE - 12" YELLOW (SOLID)
<i>(PERFORMED PLASTIC, TYPE B)</i>	
(H)	PAVEMENT MARKING - LINE - 6" WHITE (SOLID)
(I)	PAVEMENT MARKING - LINE - 24" WHITE (SOLID)
(J)	PAVEMENT MARKING - LETTERS & SYMBOLS WHITE (SOLID)
<i>(PAINT)</i>	
(K)	PAVEMENT MARKING - LINE - 5" WHITE (SOLID)
(L)	PAVEMENT MARKING - LINE - 5" YELLOW (SKIP - DASH)
(E)	(2" DASH - 6' SKIP)
(L)	(4" DASH - 40' SKIP)

REVISIONS	
NAME	DATE

ILLINOIS DEPARTMENT OF TRANSPORTATION

PAVEMENT MARKING DETAILS

F.A.P. Route 315 (US 136)
Section (1,2)RS-4
MASON COUNTY

SCALE: VERT. DRAWN BY: JWC
 HORIZ. CHECKED BY: RSC
DATE: MARCH 15, 2007

PLOT DATE = 3/22/2007
PLOT SCALE = 43.3735' / IN.
USER NAME = conjm