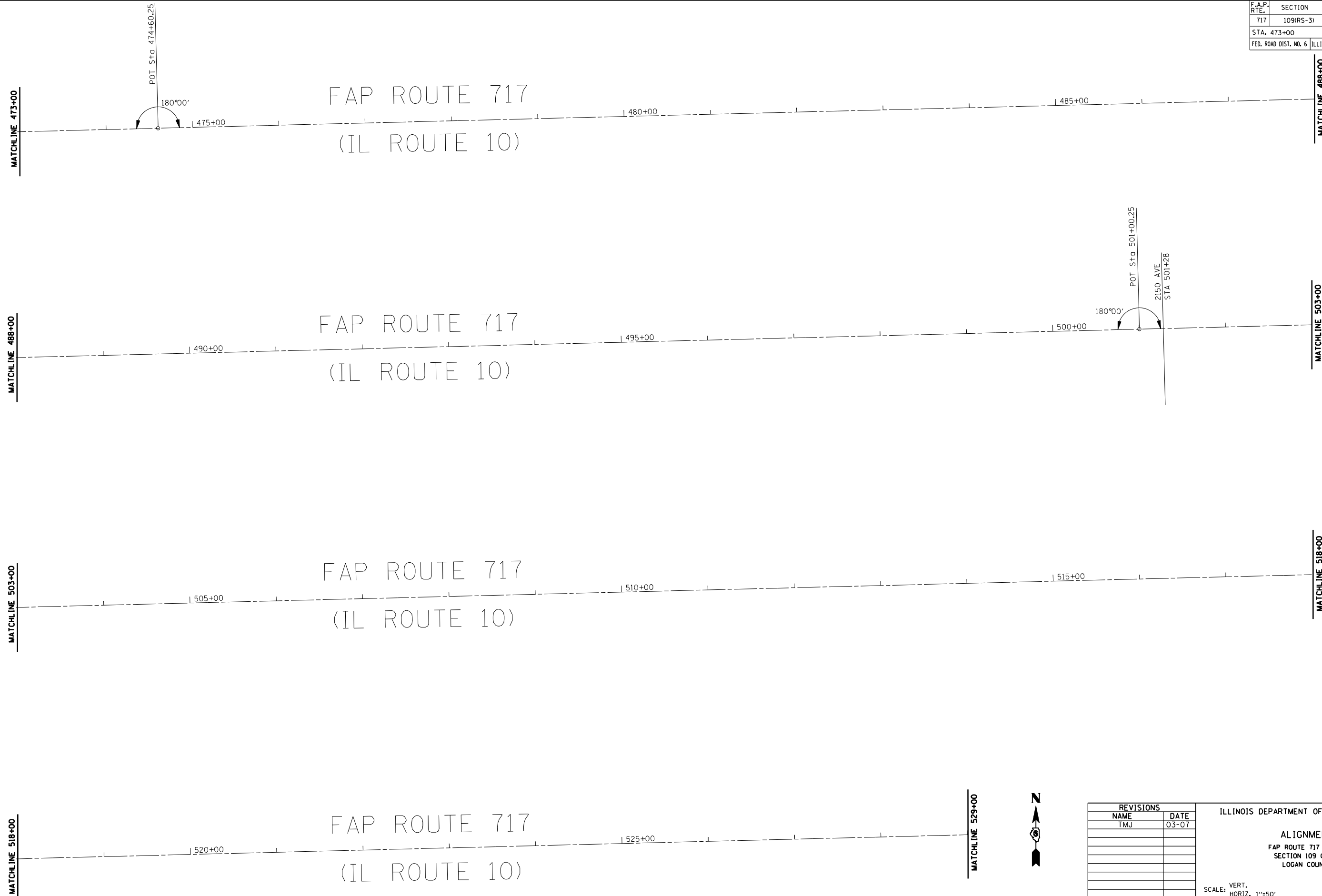


F.A.P. RTE.	SECTION	COUNTY	TOTAL SHEETS	SHEET NO.
717	109(RS-3)	LOGAN	31	24
STA. 473+00		TO STA. 529+00		
FED. ROAD DIST. NO. 6		ILLINOIS FED. AID PROJECT		

CONTRACT NO. 72825



G:\PROJ\CIVIL\G13303.74\DNV\ALIGNMENT

REVISIONS	
NAME	DATE
TMJ	03-07

ILLINOIS DEPARTMENT OF TRANSPORTATION

ALIGNMENT  
 FAP ROUTE 717 (IL 10)  
 SECTION 109 (RS-3)  
 LOGAN COUNTY

SCALE: VERT. 1"=50'  
 HORIZ. 1"=50'  
 DATE: AUG 2004

DRAWN BY: LJR  
 CHECKED BY: LDB



MATCHLINE 529+00