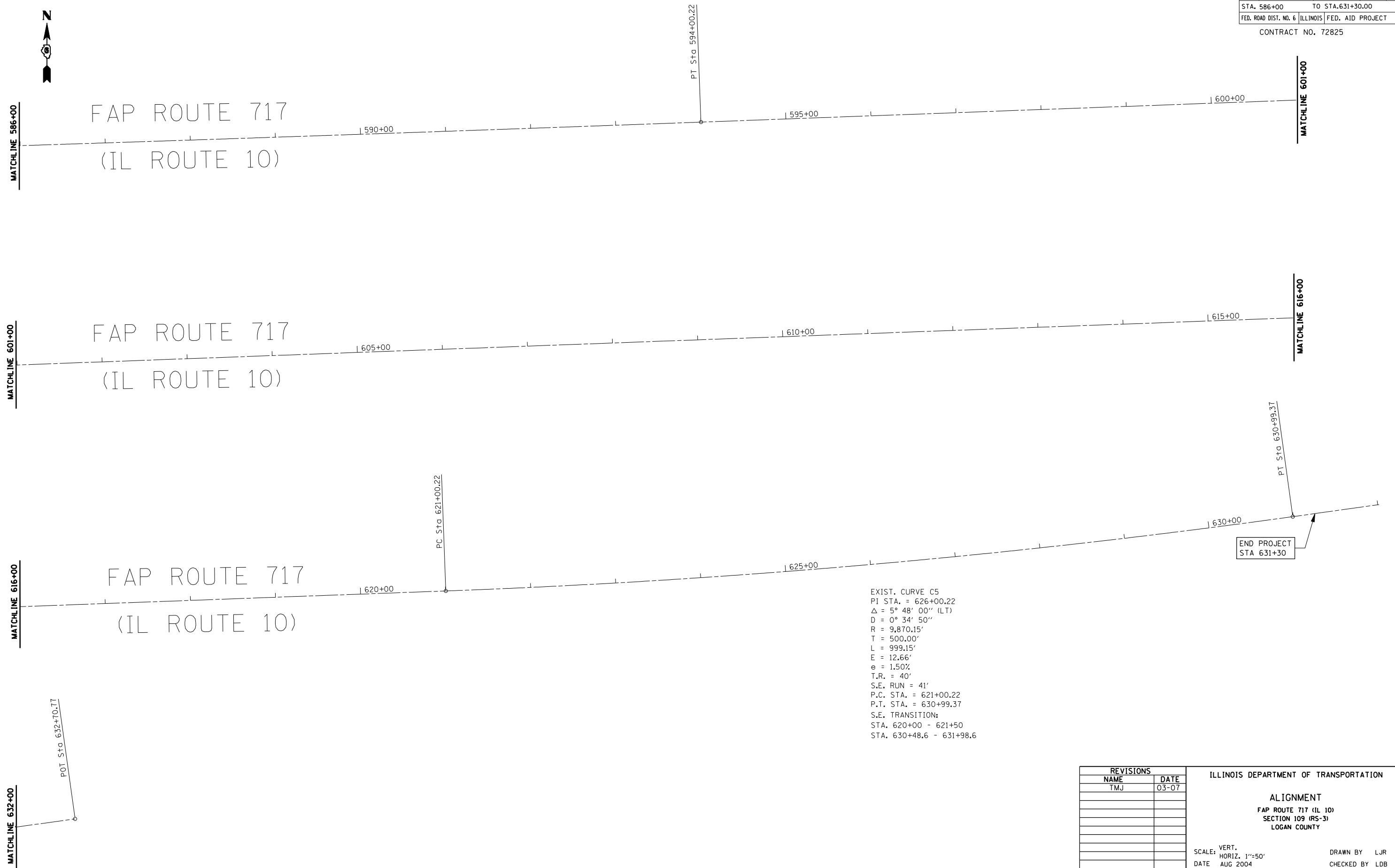


F.A.P. RTE.	SECTION	COUNTY	TOTAL SHEETS	SHEET NO.
717	109(RS-3)	LOGAN	31	26
STA. 586+00		TO STA. 631+30.00		
FED. ROAD DIST. NO. 6		ILLINOIS	FED. AID PROJECT	
CONTRACT NO. 72825				



EXIST. CURVE C5  
 PI STA. = 626+00.22  
 $\Delta = 5^\circ 48' 00''$  (LT)  
 $D = 0^\circ 34' 50''$   
 $R = 9,870.15'$   
 $T = 500.00'$   
 $L = 999.15'$   
 $e = 12.66'$   
 $e = 1.50\%$   
 $T.R. = 40'$   
 $S.E. RUN = 41'$   
 $P.C. STA. = 621+00.22$   
 $P.T. STA. = 630+99.37$   
 $S.E. TRANSITION:$   
 $STA. 620+00 - 621+50$   
 $STA. 630+48.6 - 631+98.6$

G:\PROJ\CIVIL\G13303.74\DNV\ALIGNMENT

REVISIONS	
NAME	DATE
TMJ	03-07

ILLINOIS DEPARTMENT OF TRANSPORTATION

ALIGNMENT  
 FAP ROUTE 717 (IL 10)  
 SECTION 109 (RS-3)  
 LOGAN COUNTY

SCALE: VERT. 1"=50'  
 HORIZ. 1"=50'  
 DATE: AUG 2004

DRAWN BY: LJR  
 CHECKED BY: LDB