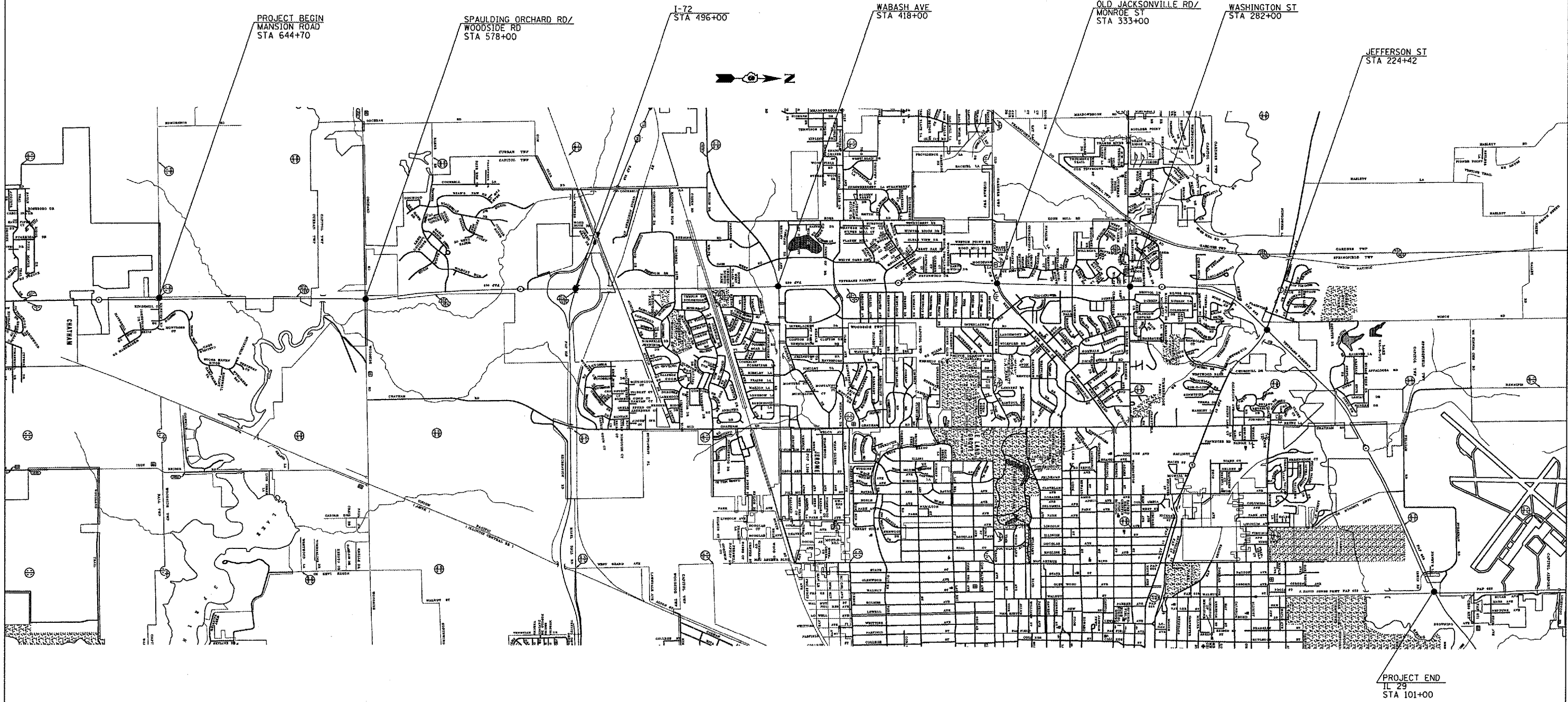


F.A.P. RTE.	SECTION	COUNTY	TOTAL SHEETS	SHEET NO.
662		SANGAMON	14	14
STA.		TO STA.		
FED. ROAD DIST. NO.	ILLINOIS	FED. AID PROJECT		

• D-6 PAVEMENT PATCHING 2007



PLOT DATE = 3/23/2007
 PLOT SCALE = 1/8" = 100'
 USER NAME = bobj

REVISIONS	
NAME	DATE

ILLINOIS DEPARTMENT OF TRANSPORTATION

LOCATION MAP

FAP 662 (IL 4)
 SECTION D-6 PAVEMENT
 PATCHING 2007
 SANGAMON COUNTY

SCALE: VERT.
 HORIZ.
 DATE

DRAWN BY
 CHECKED BY