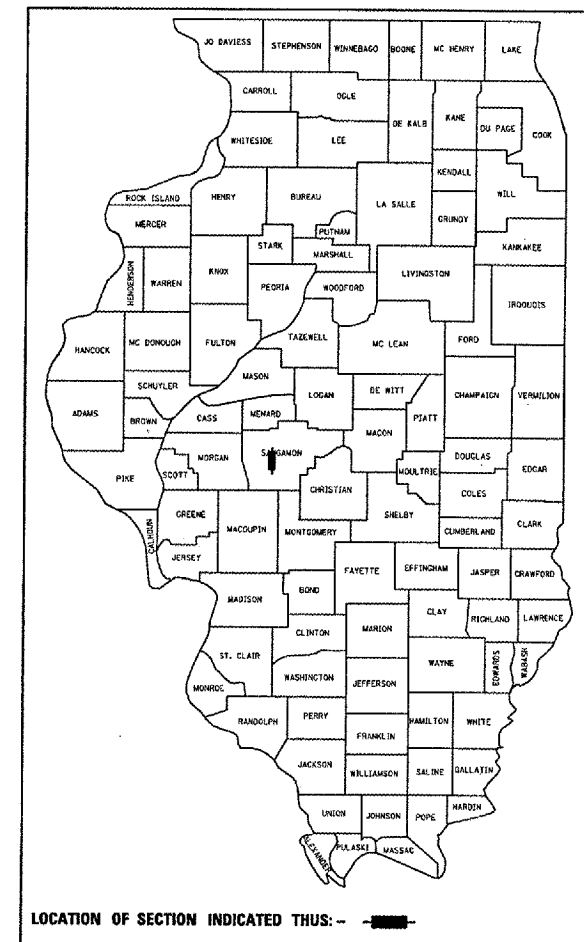


F.A.P. RTE.	SECTION	COUNTY	TOTAL SHEETS	SHEET NO.
662	*	SANGAMON	14	1

D-6 PAVEMENT PATCHING 2007

D-95-534-07



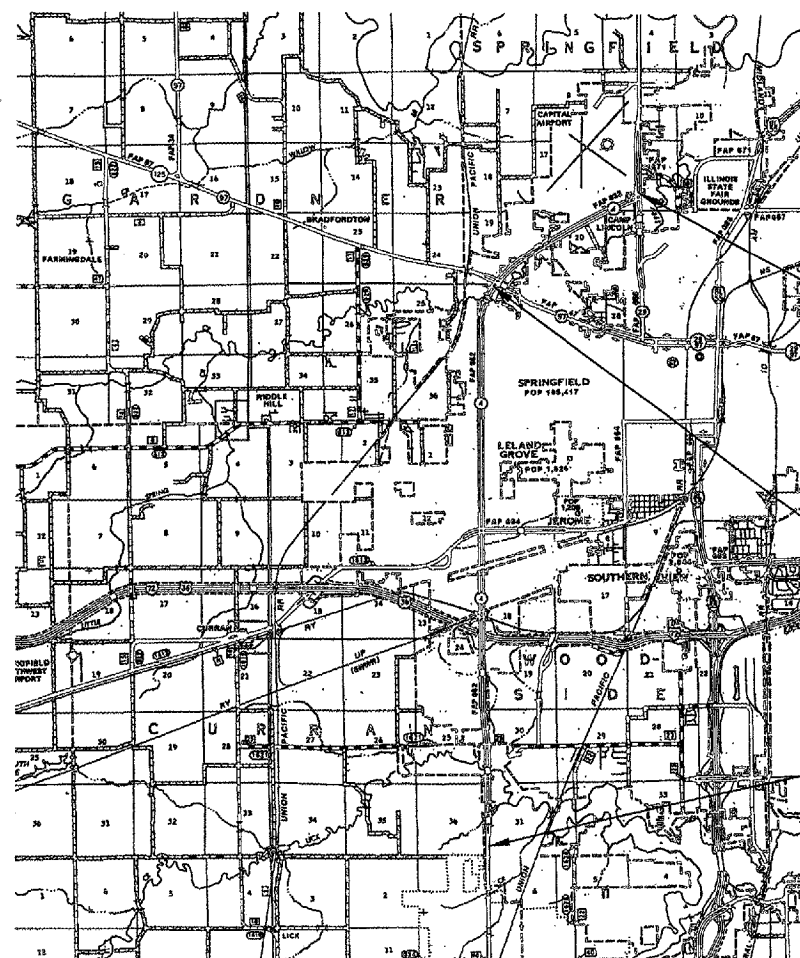
LOCATION OF SECTION INDICATED THUS: - [black box] -

STATE OF ILLINOIS  
 DEPARTMENT OF TRANSPORTATION  
 DIVISION OF HIGHWAYS

**PROPOSED  
 HIGHWAY PLANS**

FAP ROUTE 662 (IL 4 /VETERANS PKWY)  
 SECTION D-6 PAVEMENT PATCHING 2007  
 PROJECT: NHF-0662 (059)  
 SANGAMON COUNTY  
 C-96-554-07

FOR INDEX OF SHEETS, SEE SHEET NO. 2

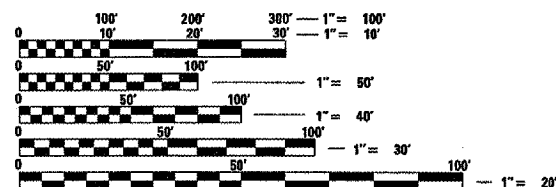


PROJECT BEGINS  
STA. 101 + 00

PATCHING OMISSION  
STA 224 + 10 TO 224 + 70

PROJECT ENDS  
STA. 644 + 70

LOCATION MAP



FULL SIZE PLANS HAVE BEEN PREPARED USING STANDARD ENGINEERING SCALES. REDUCED SIZED PLANS WILL NOT CONFORM TO STANDARD SCALES. IN MAKING MEASUREMENTS ON REDUCED PLANS, THE ABOVE SCALES MAY BE USED.

J.U.L.I.E.  
 JOINT UTILITY LOCATION INFORMATION FOR EXCAVATION  
 1-800-892-0123

CONTRACT NO. 72B07

PROJECT ENGINEER JOHN NEGANGARD 217-782-6990  
 SQUAD LEADER VINCE MADONIA 217-785-9046

STATE OF ILLINOIS  
 DEPARTMENT OF TRANSPORTATION  
 DIVISION OF HIGHWAYS

SUBMITTED MARCH 23, 2007  
Chris M Reed  
 DEPUTY DIRECTOR OF HIGHWAYS, REGION ENGINEER

May 11, 2007  
Chris E. Harms  
 ENGINEER OF DESIGN AND ENVIRONMENT

May 11, 2007  
Milton R. Sees, P.E.  
 DIRECTOR OF HIGHWAYS, CHIEF ENGINEER

**PRINTED BY THE AUTHORITY  
 OF THE STATE OF ILLINOIS**

NET LENGTH OF SECTION  
 = 54,370 FT = 10.297 MILES  
 AVG ADT = 24485 (2005)  
 % MU + SU = 6%



F.A.P. RTE.	SECTION	COUNTY	TOTAL SHEETS	SHEET NO.
662	*	SANGAMON	14	3
STA.		TO STA.		
FED. ROAD DIST. NO.	ILLINOIS	FED. AID PROJECT		
* D-6 PAVEMENT PATCHING 2007				

SUMMARY OF QUANTITIES				URBAN 80% FEDERAL 20% STATE	
CODE NO	ITEM	UNIT	TOTAL	ROADWAY	
				1000	
44200525	CLASS A PATCHES, TYPE I, 8 INCH	SQYD	184	184	
44200529	CLASS A PATCHES, TYPE II, 8 INCH	SQYD	2,525	2,525	
44200533	CLASS A PATCHES, TYPE III, 8 INCH	SQYD	769	769	
44200535	CLASS A PATCHES, TYPE IV, 8 INCH	SQYD	1,410	1,410	
44213000	PATCHING REINFORCEMENT	SQYD	4,878	4,878	
44213200	SAW CUTS	FOOT	29,342	29,342	
67000400	ENGINEER'S FIELD OFFICE, TYPE A	CAL MO	5	5	
67100100	MOBILIZATION	L SUM	1	1	
70100310	TRAFFIC CONTROL AND PROTECTION, STANDARD 701421	L SUM	1	1	
70100320	TRAFFIC CONTROL AND PROTECTION, STANDARD 701422	L SUM	1	1	
70100420	TRAFFIC CONTROL AND PROTECTION, STANDARD 701411	EACH	1	1	
70102635	TRAFFIC CONTROL AND PROTECTION, STANDARD 701701	L SUM	1	1	
70103815	TRAFFIC CONTROL SURVEILLANCE	CAL DA	24	24	
70106800	CHANGEABLE MESSAGE SIGN	CAL MO	6	6	
Z0075300	TIE BARS	EACH	941	941	

PLOT DATE = 3/23/2007  
 FILE NAME = c:\p\projects\6853487\shs\shs.dgn  
 PLOT SCALE = 1:1  
 USER NAME = mrs001av

REVISIONS	
NAME	DATE

ILLINOIS DEPARTMENT OF TRANSPORTATION  
 SUMMARY OF QUANTITIES  
 FAP 662 (IL 4)  
 D-6 PAVEMENT  
 PATCHING 2007  
 SANGAMON COUNTY  
 SCALE: VERT. \_\_\_\_\_  
 HORIZ. \_\_\_\_\_  
 DATE \_\_\_\_\_  
 DRAWN BY \_\_\_\_\_  
 CHECKED BY \_\_\_\_\_

F.A.P. RTE.	SECTION	COUNTY	TOTAL SHEETS	SHEET NO.
662	*	SANGAMON	14	4
STA.		TO STA.		
FED. ROAD DIST. NO.	ILLINOIS	FED. AID PROJECT		
* D-6 PAVEMENT PATCHING 2007				

PATCHING SCHEDULE												
*	STATION	NOTES	LENGTH	WIDTH	AREA	PATCHING CL A, TY1, 8"	PATCHING CL A, TY2, 8"	PATCHING CL A, TY3, 8"	PATCHING CL A, TY4, 8"	SAW CUTS	PATCH REINFORCEMENT	TIE BARS
			FT	FT	SOYD	SOYD	SOYD	SOYD	SOYD	FT	SOYD	EACH
SOUTHBOUND VETERANS PKWY (IL 4) DRIVING LANE												
1	282+50		6	12	8	0	8	0	0	60	8	0
2	282+97	EOP	40	6	27	0	0	0	27	144	27	19
3	283+51		6	12	8	0	8	0	0	60	8	0
4	285+60		6	12	8	0	8	0	0	60	8	0
5	286+25		6	12	8	0	8	0	0	60	8	0
6	288+35		6	12	8	0	8	0	0	60	8	0
7	288+70		6	12	8	0	8	0	0	60	8	0
8	289+56		6	12	8	0	8	0	0	60	8	0
9	289+69		6	12	8	0	8	0	0	60	8	0
10	289+97		7	12	9	0	9	0	0	62	9	0
11	290+65		6	12	8	0	8	0	0	60	8	0
12	291+07		6	12	8	0	8	0	0	60	8	0
13	299+54		6	12	8	0	8	0	0	60	8	0
14	302+94		10	12	13	0	13	0	0	68	13	0
15	303+63		6	12	8	0	8	0	0	60	8	0
16	303+96		16	6	11	0	11	0	0	72	11	0
17	304+47		12	12	16	0	0	16	0	72	16	0
18	304+98		28	12	37	0	0	0	37	104	37	13
19	306+95	EOP	15	6	10	0	10	0	0	69	10	0
20	307+44	EOP	15	6	10	0	10	0	0	69	10	0
21	307+60		6	12	8	0	8	0	0	60	8	0
22	308+00		6	12	8	0	8	0	0	60	8	0
23	309+00		8	12	11	0	11	0	0	64	11	0
24	309+70		6	12	8	0	8	0	0	60	8	0
25	309+97		6	12	8	0	8	0	0	60	8	0
26	313+86		6	12	8	0	8	0	0	60	8	0
27	314+50		6	12	8	0	8	0	0	60	8	0
28	321+05		6	12	8	0	8	0	0	60	8	0
29	321+30		6	12	8	0	8	0	0	60	8	0
30	330+72		15	12	20	0	0	20	0	78	20	0
31	331+94	EOP	15	6	10	0	10	0	0	69	10	0
32	332+21		6	12	8	0	8	0	0	60	8	0
33	332+71		15	6	10	0	10	0	0	69	10	0
34	333+00		15	8	13	0	13	0	0	77	13	0
35	333+46		6	12	8	0	8	0	0	60	8	0
36	333+67		6	12	8	0	8	0	0	60	8	0
37	333+98		6	12	8	0	8	0	0	60	8	0
38	334+55		12	12	16	0	0	16	0	72	16	0
39	334+84		18	12	24	0	0	24	0	84	24	0
40	335+36		20	12	27	0	0	0	27	88	27	0
41	336+08		12	12	16	0	0	16	0	72	16	0
42	336+56		10	12	13	0	13	0	0	68	13	0
43	336+70		6	12	8	0	8	0	0	60	8	0
44	336+87		6	12	8	0	8	0	0	60	8	0
45	349+00		6	12	8	0	8	0	0	60	8	0
46	373+00	EOP	6	12	8	0	8	0	0	60	8	0
47	373+17	RT TURN LN	6	12	8	0	8	0	0	60	8	0
48	374+70	RT TURN LN	12	12	16	0	0	16	0	72	16	0
49	377+85		6	12	8	0	8	0	0	60	8	0
50	384+20		6	12	8	0	8	0	0	60	8	0

PLOT DATE = 3/23/2007  
 FILE NAME = c:\projects\6553487\hatch.dgn  
 USER = mabonard

REVISIONS	
NAME	DATE

ILLINOIS DEPARTMENT OF TRANSPORTATION  
**SCHEDULE**  
 FAP 662 (IL 4)  
 SECTION D-6 PAVEMENT  
 PATCHING 2007  
 SANGAMON COUNTY  
 SCALE: VERT.      DRAWN BY  
 HORIZ.              CHECKED BY  
 DATE



F.A.P. RTE.	SECTION	COUNTY	TOTAL SHEETS	SHEET NO.
662	*	SANGAMON	14	6
STA.		TO STA.		
FED. ROAD DIST. NO.		ILLINOIS FED. AID PROJECT		

PATCHING SCHEDULE												
#	STATION	NOTES	LENGTH	WIDTH	AREA	PATCHING CL A, TY1, 8"	PATCHING CL A, TY2, 8"	PATCHING CL A, TY3, 8"	PATCHING CL A, TY4, 8"	SAW CUTS	PATCH REINFORCEMENT	TIE BARS
			FT	FT	SOYD	SOYD	SOYD	SOYD	FT	SOYD	EACH	
101	450+37	EOP	6	12	8	0	8	0	0	60	8	0
102	450+65		6	12	8	0	8	0	0	60	8	0
103	450+97		6	12	8	0	8	0	0	60	8	0
104	451+45		6	12	8	0	8	0	0	60	8	0
105	452+00		6	12	8	0	8	0	0	60	8	0
106	452+15		6	12	8	0	8	0	0	60	8	0
107	452+38		8	12	11	0	11	0	0	64	11	0
108	452+62		20	6	13	0	13	0	0	84	13	0
109	452+80		20	7	16	0	0	16	0	88	16	0
110	453+16		6	12	8	0	8	0	0	60	8	0
111	453+25		6	12	8	0	8	0	0	60	8	0
112	453+82		6	12	8	0	8	0	0	60	8	0
113	454+55		6	12	8	0	8	0	0	60	8	0
114	455+20		6	12	8	0	8	0	0	60	8	0
115	455+30		8	12	11	0	11	0	0	64	11	0
116	455+45		6	12	8	0	8	0	0	60	8	0
117	455+80		10	12	13	0	13	0	0	68	13	0
118	456+83		6	12	8	0	8	0	0	60	8	0
119	457+00	EOP	10	6	7	0	7	0	0	54	7	0
120	457+10		6	12	8	0	8	0	0	60	8	0
121	457+23		6	12	8	0	8	0	0	60	8	0
122	457+50		6	12	8	0	8	0	0	60	8	0
123	457+70		6	12	8	0	8	0	0	60	8	0
124	458+00		6	12	8	0	8	0	0	60	8	0
125	458+40		6	12	8	0	8	0	0	60	8	0
126	458+52		6	12	8	0	8	0	0	60	8	0
127	458+85		6	12	8	0	8	0	0	60	8	0
128	460+00		6	12	8	0	8	0	0	60	8	0
129	460+23		8	12	11	0	11	0	0	64	11	0
130	460+38		6	12	8	0	8	0	0	60	8	0
131	464+84		6	12	8	0	8	0	0	60	8	0
132	468+46		6	12	8	0	8	0	0	60	8	0
133	469+00		6	12	8	0	8	0	0	60	8	0
134	471+90		6	12	8	0	8	0	0	60	8	0
135	475+15		6	12	8	0	8	0	0	60	8	0
136	477+25		6	12	8	0	8	0	0	60	8	0
137	485+90		25	6	17	0	0	17	0	99	17	12
138	487+16		6	12	8	0	8	0	0	60	8	0
139	487+50		6	12	8	0	8	0	0	60	8	0
140	488+40		6	12	8	0	8	0	0	60	8	0
141	488+70		6	12	8	0	8	0	0	60	8	0
142	489+40		6	12	8	0	8	0	0	60	8	0
143	489+58		6	12	8	0	8	0	0	60	8	0
144	498+97		6	12	8	0	8	0	0	60	8	0
145	500+12		6	12	8	0	8	0	0	60	8	0
146	501+33	EOP	150	6	100	0	0	0	100	474	100	74
147	504+15		6	12	8	0	8	0	0	60	8	0
148	507+97	EOP	6	12	8	0	8	0	0	60	8	0
149	508+20		6	12	8	0	8	0	0	60	8	0
150	508+28		6	12	8	0	8	0	0	60	8	0

PLOT DATE = 3/23/2007  
 PLOT SCALE = 1/8" = 100' / IN.  
 USER NAME = masonstav

REVISIONS	
NAME	DATE

ILLINOIS DEPARTMENT OF TRANSPORTATION

**SCHEDULE**

FAP 662 (IL 4)  
 SECTION D-S PAVEMENT  
 PATCHING 2007  
 SANGAMON COUNTY

SCALE: VERT.  
 HORIZ.  
 DATE

DRAWN BY  
 CHECKED BY









F.A.P. RTE.	SECTION	COUNTY	TOTAL SHEETS	SHEET NO.
662		SANGAMON	14	10
STA.		TO STA.		
FED. ROAD DIST. NO.		ILLINOIS FED. AID PROJECT		

PATCHING SCHEDULE												
*	STATION	NOTES	LENGTH	WIDTH	AREA	PATCHING CL A, TY1, 8"	PATCHING CL A, TY2, 8"	PATCHING CL A, TY3, 8"	PATCHING CL A, TY4, 8"	SAW CUTS	PATCH REINFORCEMENT	TIE BARS
			FT	FT	SOYD	SOYD	SOYD	SOYD	SOYD	SOYD	FT	SOYD
301	534+94		10	6	7	0	7	0	0	54	7	0
302	531+40		20	6	13	0	13	0	0	84	13	0
303	530+17		6	6	4	4	0	0	0	42	4	0
304	530+00		30	6	20	0	0	20	0	114	20	14
305	529+32		20	6	13	0	13	0	0	84	13	0
306	529+00		30	6	20	0	0	20	0	114	20	14
307	528+45		6	6	4	4	0	0	0	42	4	0
308	515+64		6	6	4	4	0	0	0	42	4	0
309	515+50		6	6	4	4	0	0	0	42	4	0
310	515+20		6	6	4	4	0	0	0	42	4	0
311	510+00		6	6	4	4	0	0	0	42	4	0
312	509+50	RT TURN LN	100	6	67	0	0	0	67	324	67	49
313	506+84		12	12	16	0	0	16	0	72	16	0
314	505+10		25	6	17	0	0	17	0	99	17	12
315	505+00		6	6	4	4	0	0	0	42	4	0
316	504+40		6	12	8	0	8	0	0	60	8	0
317	492+10		10	12	13	0	13	0	0	68	13	0
318	491+30		6	6	4	4	0	0	0	42	4	0
319	486+60		6	6	4	4	0	0	0	42	4	0
320	485+45		50	12	67	0	0	0	67	148	67	24
321	453+60		6	6	4	4	0	0	0	42	4	0
322	453+00		6	6	4	4	0	0	0	42	4	0
323	452+40		6	12	8	0	8	0	0	60	8	0
324	452+00		6	6	4	4	0	0	0	42	4	0
325	451+85		6	6	4	4	0	0	0	42	4	0
326	451+60		6	12	8	0	8	0	0	60	8	0
327	450+80		6	6	4	4	0	0	0	42	4	0
328	450+30		6	12	8	0	8	0	0	60	8	0
329	449+90		6	6	4	4	0	0	0	42	4	0
330	449+75		6	12	8	0	8	0	0	60	8	0
331	448+00		10	6	7	0	7	0	0	54	7	0
332	447+60		8	6	5	0	5	0	0	48	5	0
333	427+30		6	6	4	4	0	0	0	42	4	0
334	427+10		6	6	4	4	0	0	0	42	4	0
335	421+10		6	6	4	4	0	0	0	42	4	0
336	420+70	RT TURN LN	15	6	10	0	10	0	0	69	10	0
337	419+00	EOP	8	6	5	0	5	0	0	48	5	0
338	418+80	EOP	6	12	8	0	8	0	0	60	8	0
339	418+40	EOP	15	6	10	0	10	0	0	69	10	0
340	329+00		15	6	10	0	10	0	0	69	10	0
341	327+70		20	6	13	0	13	0	0	84	13	0
342	327+20		6	12	8	0	8	0	0	60	8	0
343	327+00		6	6	4	4	0	0	0	42	4	0
344	304+70	LOOP	6	12	8	0	8	0	0	60	8	0
345	304+50	CL	15	6	10	0	10	0	0	69	10	0
346	303+50		6	12	8	0	8	0	0	60	8	0
347	303+30		6	12	8	0	8	0	0	60	8	0
348	303+00		6	12	8	0	8	0	0	60	8	0
349	290+20		6	6	4	4	0	0	0	42	4	0
350	246+05		20	6	13	0	13	0	0	84	13	0

PLOT DATE = 3/23/2007  
 FILE NAME = c:\projects\6833487\atschdgn  
 PLOT DEVICE = plott01 / Pn  
 USER NAME = mcdonovj

REVISIONS	
NAME	DATE

ILLINOIS DEPARTMENT OF TRANSPORTATION

**SCHEDULE**

FAP 662 (IL 4)  
 SECTION D-6 PAVEMENT  
 PATCHING 2007  
 SANGAMON COUNTY

SCALE: VERT. \_\_\_\_\_  
 HORIZ. \_\_\_\_\_

DATE \_\_\_\_\_ DRAWN BY \_\_\_\_\_  
 CHECKED BY \_\_\_\_\_

F.A.P. RTE.	SECTION	COUNTY	TOTAL SHEETS	SHEET NO.
662		SANGAMON	14	11
STA.		TO STA.		
FED. ROAD DIST. NO.	ILLINOIS	FED. AID PROJECT		

PATCHING SCHEDULE												
*	STATION	NOTES	LENGTH	WIDTH	AREA	PATCHING CL A. TY1, 8"	PATCHING CL A. TY2, 8"	PATCHING CL A. TY3, 8"	PATCHING CL A. TY4, 8"	SAW CUTS	PATCH REINFORCEMENT	TIE BARS
			FT	FT	SOYD	SOYD	SOYD	SOYD	SOYD	SOYD	FT	SOYD
351	245+75		6	6	4	4	0	0	0	42	4	0
352	245+62		6	6	4	4	0	0	0	42	4	0
353	102+00	LOOP	8	12	11	0	11	0	0	64	11	0
NORTHBOUND VETERANS PKWY ( IL 4 ) PASSING LANE												
354	643+90		6	12	8	0	8	0	0	60	8	0
355	641+41		12	12	16	0	0	16	0	72	16	0
356	641+23		12	12	16	0	0	16	0	72	16	0
357	641+00		12	12	16	0	0	16	0	72	16	0
358	640+75		6	12	8	0	8	0	0	60	8	0
359	639+00		60	6	40	0	0	0	40	204	40	29
360	638+20		60	12	80	0	0	0	80	168	80	29
361	637+92		100	6	67	0	0	0	67	324	67	49
362	637+50		6	12	8	0	8	0	0	60	8	0
363	635+35		60	6	40	0	0	0	40	204	40	29
364	631+78		6	6	4	4	0	0	0	42	4	0
365	630+75		60	6	40	0	0	0	40	204	40	29
366	629+47		6	6	4	4	0	0	0	42	4	0
367	628+34		6	6	4	4	0	0	0	42	4	0
368	627+94		9	12	12	0	12	0	0	66	12	0
369	625+45		6	6	4	4	0	0	0	42	4	0
370	624+40		6	6	4	4	0	0	0	42	4	0
371	620+09		18	6	12	0	12	0	0	78	12	0
372	618+45		20	12	27	0	0	0	27	88	27	0
373	618+12	LT TURN LN	6	12	8	0	8	0	0	60	8	0
374	618+12		6	6	4	4	0	0	0	42	4	0
375	617+81		6	12	8	0	8	0	0	60	8	0
376	617+20		25	6	17	0	0	17	0	99	17	12
377	615+30		14	12	19	0	0	19	0	76	19	0
378	614+20		6	12	8	0	8	0	0	60	8	0
379	613+90		60	6	40	0	0	0	40	204	40	29
380	610+85		6	12	8	0	8	0	0	60	8	0
381	609+20		15	6	10	0	10	0	0	69	10	0
382	584+25		15	12	20	0	0	20	0	78	20	0
383	580+80	LT TURN LN	6	12	8	0	8	0	0	60	8	0
384	579+80	LT TURN LN	6	12	8	0	8	0	0	60	8	0
385	578+80	LT TURN LN	6	12	8	0	8	0	0	60	8	0
386	578+50	LT TURN LN	12	12	16	0	0	16	0	72	16	0
387	576+60		6	6	4	4	0	0	0	42	4	0
388	572+70		12	12	16	0	0	16	0	72	16	0
389	572+50		6	12	8	0	8	0	0	60	8	0
390	537+12		6	12	8	0	8	0	0	60	8	0
391	530+60		6	6	4	4	0	0	0	42	4	0
392	530+17		6	6	4	4	0	0	0	42	4	0
393	529+93		6	12	8	0	8	0	0	60	8	0
394	529+30		6	6	4	4	0	0	0	42	4	0
395	505+00		6	6	4	4	0	0	0	42	4	0
396	488+80	LT TURN LN	6	6	4	4	0	0	0	42	4	0
397	488+65	LT TURN LN	14	14	22	0	0	22	0	84	22	0
398	488+50	LT TURN LN	6	14	9	0	9	0	0	68	9	0
399	488+20	LT TURN LN	15	14	23	0	0	23	0	86	23	0
400	488+00	LT TURN LN	14	14	22	0	0	22	0	84	22	0

PLOT DATE = 3/23/2007  
 PLOT SCALE = 1/8" = 1'-0"  
 USER NAME = medonovj

REVISIONS	
NAME	DATE

ILLINOIS DEPARTMENT OF TRANSPORTATION

**SCHEDULE**

FAP 662 (IL 4)  
 SECTION D-6 PAVEMENT  
 PATCHING 2007  
 SANGAMON COUNTY

SCALE: VERT.      DRAWN BY  
 HORIZ.              CHECKED BY  
 DATE

F.A.P. RTE.	SECTION	COUNTY	TOTAL SHEETS	SHEET NO.
662	*	SANGAMON	14	12
STA.		TO STA.		
FED. ROAD DIST. NO.	ILLINOIS	FED. AID PROJECT		

PATCHING SCHEDULE															
*	STATION	NOTES	LENGTH		WIDTH		AREA		PATCHING CL A.	PATCHING CL A.	PATCHING CL A.	PATCHING CL A.	SAW CUTS	PATCH REINFORCEMENT	TIE BARS
			FT	FT	FT	FT	SOYD	SOYD	SOYD	SOYD	SOYD	SOYD		SOYD	SOYD
401	487+80	LT TURN LN	6	14	9	0	0	9	0	0	0	68	9	0	
402	487+70	LT TURN LN	6	14	9	0	0	9	0	0	68	9	0		
403	487+50	LT TURN LN	6	6	4	4	0	0	0	0	42	4	0		
404	451+60		6	12	8	0	0	8	0	0	60	8	0		
405	448+60		6	6	4	4	0	0	0	0	42	4	0		
406	424+50		6	6	4	4	0	0	0	0	42	4	0		
407	424+00		6	6	4	4	0	0	0	0	42	4	0		
408	423+50		6	6	4	4	0	0	0	0	42	4	0		
409	423+00		6	6	4	4	0	0	0	0	42	4	0		
410	305+60	LT TURN LN	6	12	8	0	0	8	0	0	60	8	0		
411	305+00	LT TURN LN	6	12	8	0	0	8	0	0	60	8	0		
412	304+70	LOOP	6	12	8	0	0	8	0	0	60	8	0		
413	243+50	LT TURN LN	6	6	4	4	0	0	0	0	42	4	0		
TOTALS							4878	184	2525	769	1401	29342	4878	941	

PLOT DATE = 3/23/2007  
 PLOT SCALE = 1/8" = 100'  
 USER NAME = emd@statev

REVISIONS	
NAME	DATE

ILLINOIS DEPARTMENT OF TRANSPORTATION

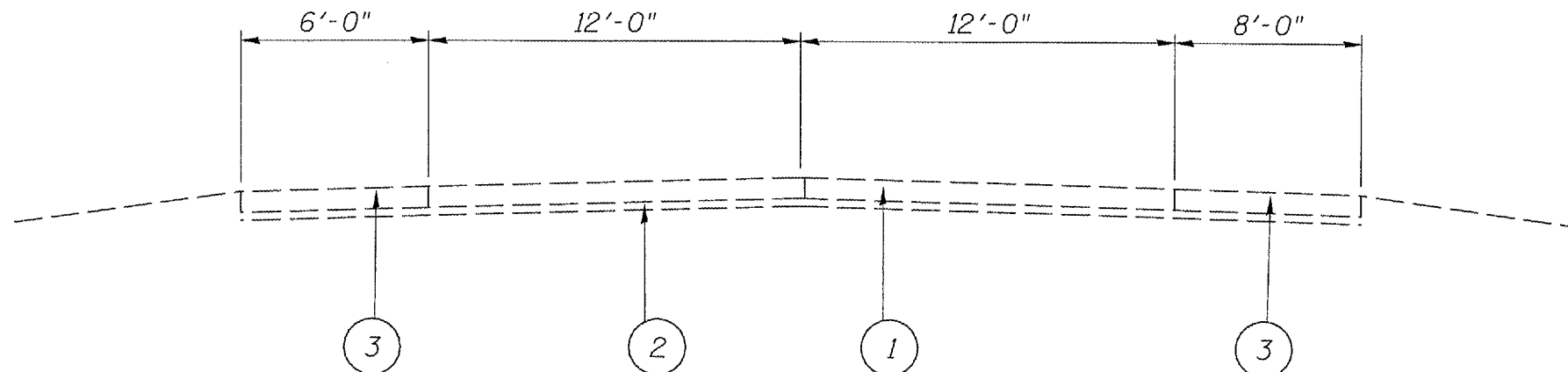
**SCHEDULE**

FAP 662 (IL 4)  
 SECTION 0-5 PAVEMENT  
 PATCHING 2007  
 SANGAMON COUNTY

SCALE: VERT. \_\_\_\_\_  
 HORIZ. \_\_\_\_\_

DRAWN BY \_\_\_\_\_  
 CHECKED BY \_\_\_\_\_

F.A.P. RTE.	SECTION	COUNTY	TOTAL SHEETS	SHEET NO.
662	*	SANGAMON	14	13
STA.		TO STA.		
FED. ROAD DIST. NO.	ILLINOIS FED. AID PROJECT			
* D-6 PAVEMENT PATCHING 2007				



FAP 662 (IL 4/VETERANS PKWY)  
 NORTHBOUND AND SOUTHBOUND LANES\*  
 STA. 101+00 TO 644+70  
 PATCHING OMISSION (IL 97 / JEFFERSON ST)  
 STA 224+10 TO 224+70

LEGEND

- 1 EXISTING CONTINUOUSLY REINFORCED PCC PAVEMENT, 8"
- 2 EXISTING STABILIZED SUB-BASE 4"
- 3 EXISTING BITUMINOUS SHOULDER 8"

\*NORTHBOUND LANES TYPICAL, SOUTHBOUND LANES SIMILAR

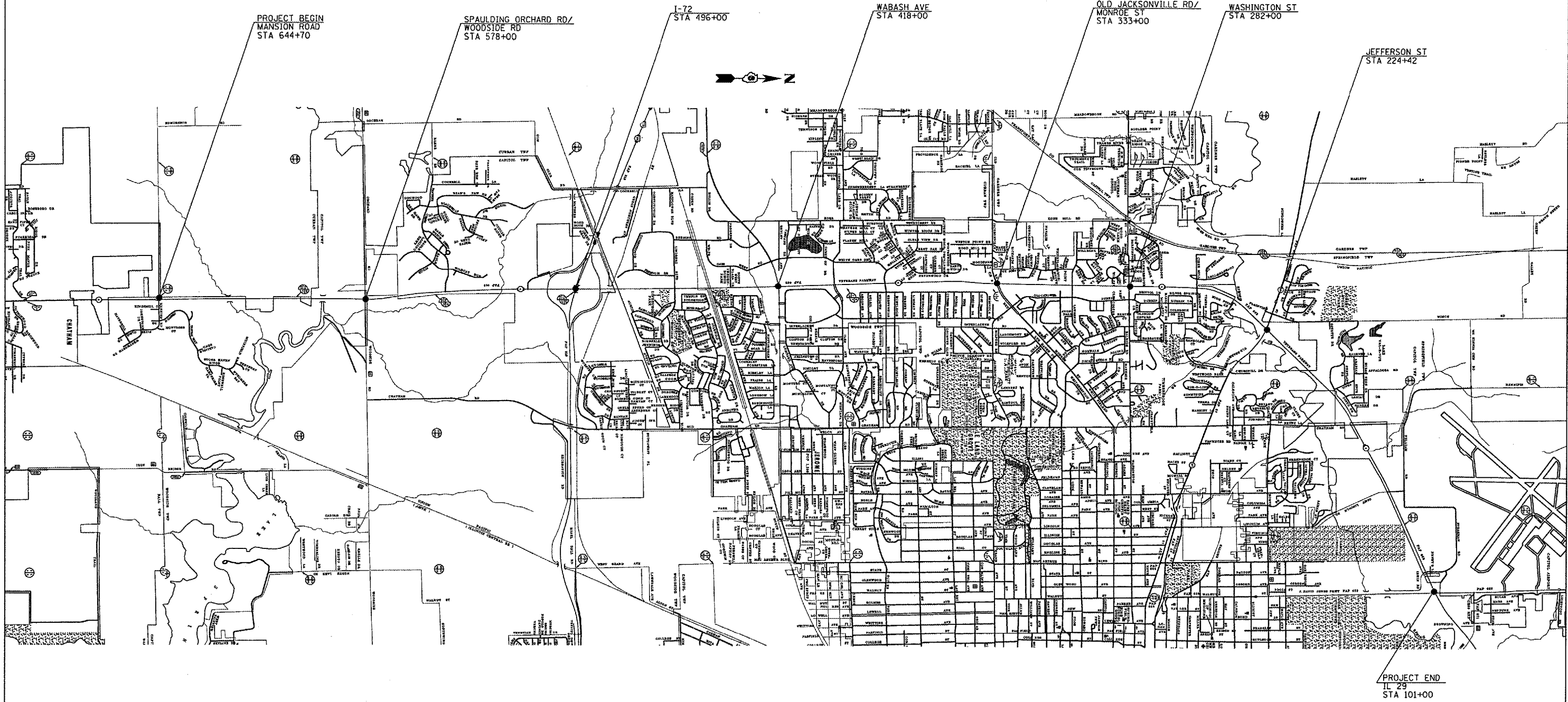
PLOT DATE = 3/23/2007  
 PLOT SCALE = 1/8" = 1'-0"  
 USER NAME = medonev.j

REVISIONS	
NAME	DATE

ILLINOIS DEPARTMENT OF TRANSPORTATION  
 TYPICAL SECTIONS  
 FAI 72/FAP 662 (I 72/IL 4/VETERANS PKWY)  
 SECTION D-6 PAVEMENT PATCHING  
 SANGAMON COUNTY  
 SCALE: VERT. \_\_\_\_\_  
 HORIZ. \_\_\_\_\_  
 DATE \_\_\_\_\_ DRAWN BY \_\_\_\_\_  
 CHECKED BY \_\_\_\_\_

F.A.P. RTE.	SECTION	COUNTY	TOTAL SHEETS	SHEET NO.
662		SANGAMON	14	14
STA.		TO STA.		
FED. ROAD DIST. NO.	ILLINOIS	FED. AID PROJECT		

• D-6 PAVEMENT PATCHING 2007



PLOT DATE = 3/23/2007  
 PLOT SCALE = 1/8" = 100'  
 USER NAME = bobj

REVISIONS	
NAME	DATE

ILLINOIS DEPARTMENT OF TRANSPORTATION

**LOCATION MAP**

FAP 662 (IL 4)  
 SECTION D-6 PAVEMENT  
 PATCHING 2007  
 SANGAMON COUNTY

SCALE: VERT.  
 HORIZ.  
 DATE

DRAWN BY  
 CHECKED BY