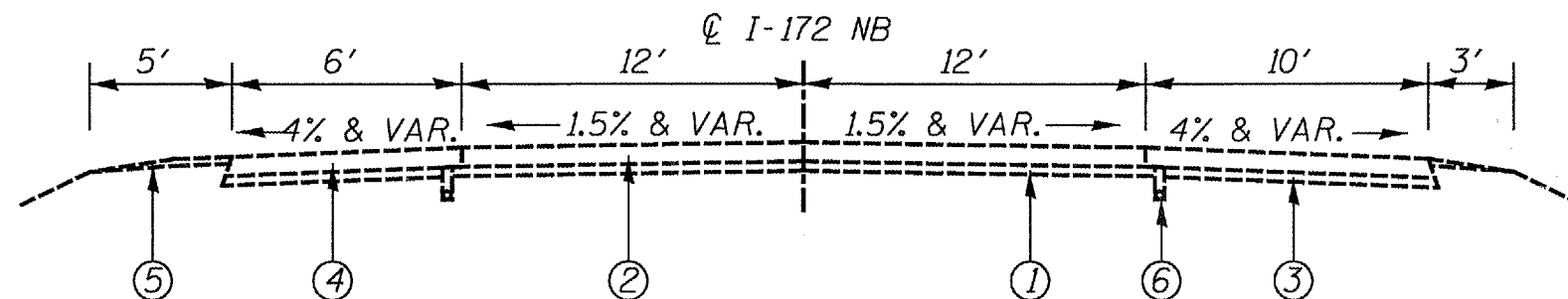


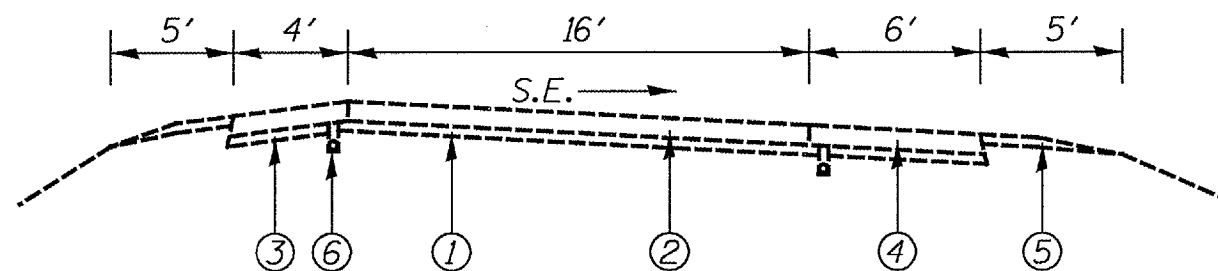
SB TYPICAL SECTION (TANGENT)

224+78 TO 288+81.55
STA EQ 288+81.55 BK = 0+00 AH
0+00 TO 241+90



NB TYPICAL SECTION (TANGENT)

224+78 TO 288+81.55
STA EQ 288+81.55 BK = 0+00 AH
0+00 TO 241+90



TYPICAL RAMP SECTION

ALL LOCATIONS

- ① EXISTING STABILIZED SUB-BASE, 4"
- ② EXISTING CONTINUOUSLY REINFORCED CONCRETE PAVEMENT, 8"
- ③ EXISTING SUB-BASE GRANULAR MATERIAL, TYPE C, 4"
- ④ EXISTING HOT-MIX ASPHALT SHOULDER, 8"
- ⑤ EXISTING AGGREGATE SHOULDER
- ⑥ EXISTING PIPE UNDERDRAINS

NOT TO SCALE

TYPICAL SECTIONS
FAI 172 (I-172)
SECTION 1-5(I); 1-6(I-2)
ADAMS COUNTY