

F.A.P. RTE.	SECTION	COUNTY	TOTAL SHEETS	SHEET NO.
*	**	***	68	1
* FAP 332 (IL 1); FAP 328 (US 45)				
** 101B-1; (8BR-1)B-1				
*** WABASH / WAYNE				

D-97-037-03

STATE OF ILLINOIS
DEPARTMENT OF TRANSPORTATION
DIVISION OF HIGHWAYS

PROPOSED HIGHWAY PLANS

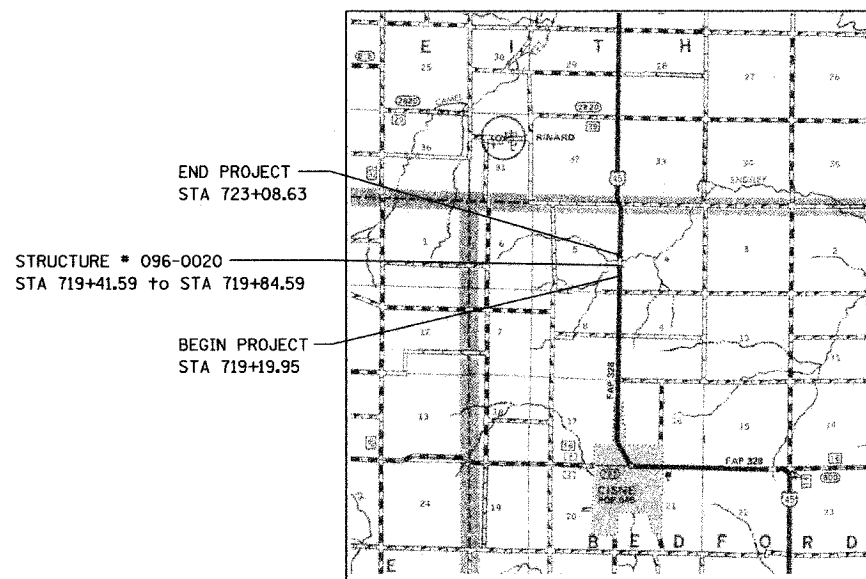
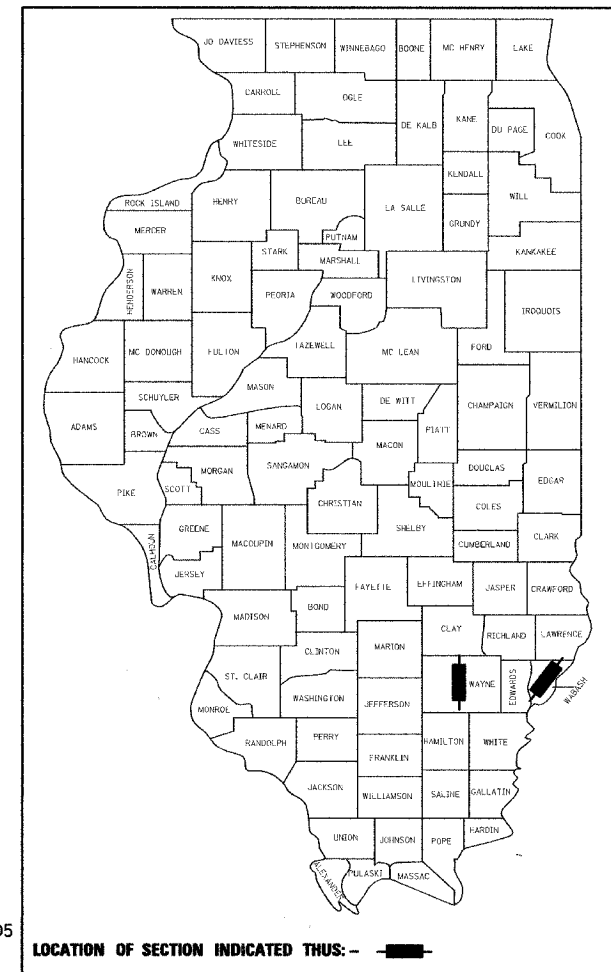
FAP ROUTE 332 (IL 1); FAP ROUTE 328 (US 45)
SECTION 101B-1; (8BR-1)B-1
PROJECT: BHF-000S(544)
WAYNE & WABASH COUNTIES
C-97-050-03

INDEX OF SHEETS

- 1 COVER
- 2 GENERAL NOTES
- 3-5 SUMMARY OF QUANTITIES
- 6-8 SCHEDULE OF QUANTITIES
- 9 ALIGNMENT TIES & BENCHMARKS
- 10 TYPICAL SECTIONS US 45
- 11-12 PLAN & PROFILE - US 45
- 13-16 STAGE CONSTRUCTION PLAN - US 45
- 17-18 EROSION CONTROL PLAN - US 45
- 19-31 STRUCTURE PLANS SN 096-0020
- 32-41 CROSS SECTIONS - US 45
- 42 TYPICAL SECTIONS IL 1
- 43-45 PLAN & PROFILE - IL 1
- 46-48 STAGE CONSTRUCTION PLAN - IL 1
- 49-51 EROSION CONTROL PLAN - IL 1
- 52-62 STRUCTURE PLANS SN 093-0005
- 63-68 CROSS SECTIONS - IL 1

INDEX OF IDOT HIGHWAY STANDARDS

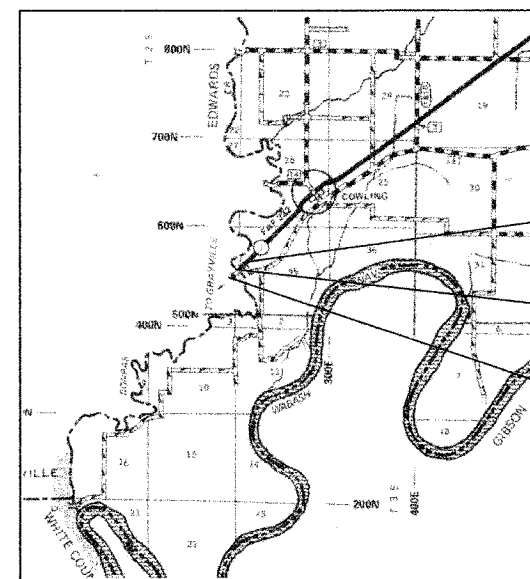
- | | |
|------------|-----------|
| 000001-04 | 635011-01 |
| 001 001-01 | 642001 |
| 001006 | 701201-02 |
| 280001-03 | 701306-01 |
| 515001-02 | 701321-08 |
| 542401 | 701326-02 |
| 630001-07 | 702001-06 |
| 630201-04 | 704001-03 |
| 630301-04 | 780001-01 |
| 631032-03 | 781001-02 |
| 635006-02 | |



LOCATION MAP

WAYNE COUNTY
US 45

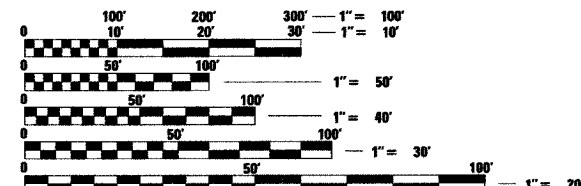
GROSS LENGTH OF PROJECT = 588.68 FEET (0.11 MILES)
NET LENGTH OF PROJECT = 588.68 FEET (0.11 MILES)



LOCATION MAP

WABASH COUNTY
IL 1

GROSS LENGTH OF PROJECT = 584.29 FEET (0.11 MILES)
NET LENGTH OF PROJECT = 584.29 FEET (0.11 MILES)



FULL SIZE PLANS HAVE BEEN PREPARED USING STANDARD ENGINEERING SCALES. REDUCED SIZED PLANS WILL NOT CONFORM TO STANDARD SCALES. IN MAKING MEASUREMENTS ON REDUCED PLANS, THE ABOVE SCALES MAY BE USED.

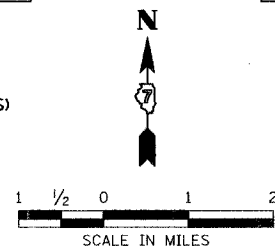
J.U.L.I.E.
JOINT UTILITY LOCATION INFORMATION FOR EXCAVATION
1-800-892-0123



Mary Coombe Bloxdorf 3/16/07
MARY COOMBE BLOXDORF, P.E. Date
License Expires 11/30/2007

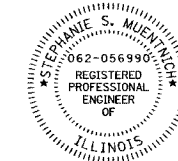
THIS SEAL IS VALID FOR THE FOLLOWING SHEETS IN THESE PLANS WHICH WERE PREPARED UNDER MY DIRECT SUPERVISION:

SHEETS 43 TO 51
SHEETS 63 TO 68



PLANS PREPARED BY
HORNER & SHIFRIN, INC.
ENGINEERS

640 PIERCE BOULEVARD SUITE 200 • O'FALLON, ILLINOIS 62269
5200 OAKLAND AVENUE • ST. LOUIS, MISSOURI 63110
www.hornershifrin.com



Stephanie S. Muentnich 3/15/07
STEPHANIE S. MUENTNICH, P.E. Date
License Expires 11/30/2007

THIS SEAL IS VALID FOR THE FOLLOWING SHEETS IN THESE PLANS WHICH WERE PREPARED UNDER MY DIRECT SUPERVISION:

SHEETS 1 TO 18
SHEETS 32 TO 42

STATE OF ILLINOIS
DEPARTMENT OF TRANSPORTATION
DIVISION OF HIGHWAYS

SUBMITTED *March 22nd* 2007

Christine M. Rado
DEPUTY DIRECTOR OF HIGHWAYS, REGION ENGINEER

Eric E. Haral
INTERIM ENGINEER OF DESIGN AND ENVIRONMENT

Milton R. Seay
DIRECTOR OF HIGHWAYS, CHIEF ENGINEER

PRINTED BY THE AUTHORITY
OF THE STATE OF ILLINOIS