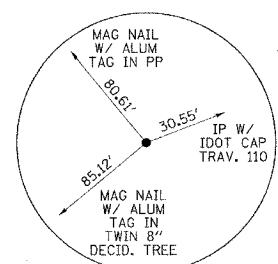


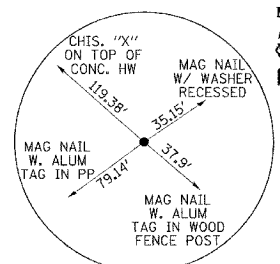
F.A.P. R.T.E.	SECTION	COUNTY	TOTAL SHEETS	SHEET NO.
*	**	***	68	9
STA.	TO STA.			
FED. ROAD DIST. NO.	ILLINOIS	FED. AID PROJECT		
* FAP 332 (IL 1); FAP 328 (US 45)				
** 101B-1; (8BR-1)B-1				
*** WABASH / WAYNE				

ALIGNMENT TIES:

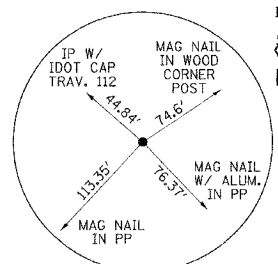
US 45



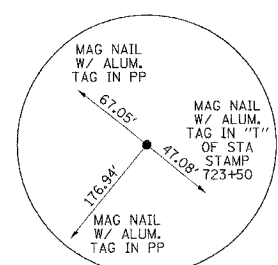
FAP 328 (US 45)
ALIGNMENT TIE
P.O.T. STA 708+15.31



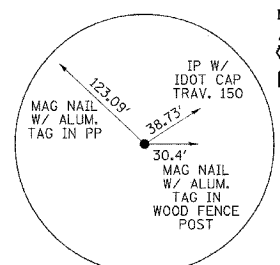
FAP 328 (US 45)
ALIGNMENT TIE
P.C. STA 723+04.45



FAP 328 (US 45)
ALIGNMENT TIE
P.I. STA 728+04.45



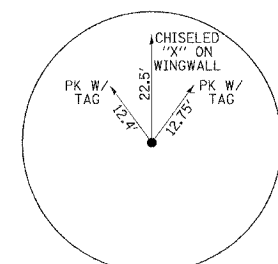
FAP 328 (US 45)
ALIGNMENT TIE
P.T. STA 733+04.45



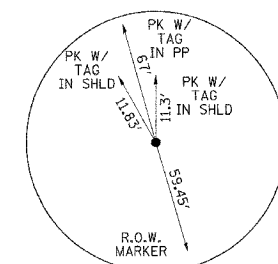
FAP 328 (US 45)
ALIGNMENT TIE
P.O.T. STA 739+69.87

ALIGNMENT TIES:

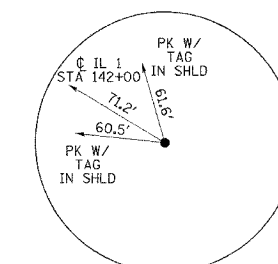
IL 1



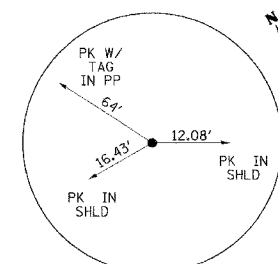
FAP 332 (IL 1)
ALIGNMENT TIE
P.O.T. STA 130+31.19



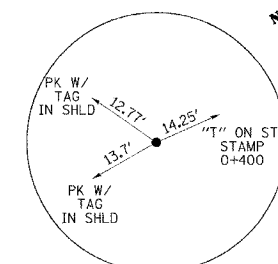
FAP 332 (IL 1)
ALIGNMENT TIE
P.C. STA 136+58.55



FAP 332 (IL 1)
ALIGNMENT TIE
P.I. (BOLT FOUND)



FAP 332 (IL 1)
ALIGNMENT TIE
P.T. STA 147+24.37



FAP 332 (IL 1)
ALIGNMENT TIE
P.O.T. STA 162+32.80

BENCHMARKS:

FAP 328 (US 45)

- BM 217 - RR SPIKE IN POWER POLE WEST OF US 45. STA 729+00, 29.9' LT. ELEVATION - 455.286
- BM 218 - CHISELED SQUARE ON NW CORNER OF BRIDGE SN 093-096-0020. STA 719+90, 16.1' LT. ELEVATION - 439.18
- BM 219 - RR SPIKE IN POWER POLE WEST OF US 45. STA 719+90, 29.6' LT. ELEVATION - 438.448
- BM 220 - RR SPIKE IN POWER POLE WEST OF US 45. STA 689+92, 30.7' LT. ELEVATION - 457.68

BENCHMARKS:

FAP 332 (IL 1)

- BM 516 - RR SPIKE IN POWER POLE EAST SIDE. STA ± 153+59. ELEVATION - 395.978
- BM 517 - CHISELED SQUARE ON SW WINGWALL OF BRIDGE SN 093-0005. ELEVATION - 390.496
- BM 518 - RR SPIKE IN 30" DIAMETER TREE ON SOUTH SIDE OF IL 1. STA ± 139+98, 43' RT. ELEVATION - 403.720

REVISIONS	
NAME	DATE

ILLINOIS DEPARTMENT OF TRANSPORTATION

ALIGNMENT TIES & BENCHMARKS

SCALE: VERT. N/A
HORIZ. N/A
DATE 03/15/07

DRAWN BY KMO
CHECKED BY SSM

Plot Date: 3/15/07
 Plot Time: 2:43:30 PM
 Plotted By: amunition
 Pen Table: ddt.tbl
 Filename: I:\06055\Cad\Downscope\Construction\Plots\06_Control.dgn