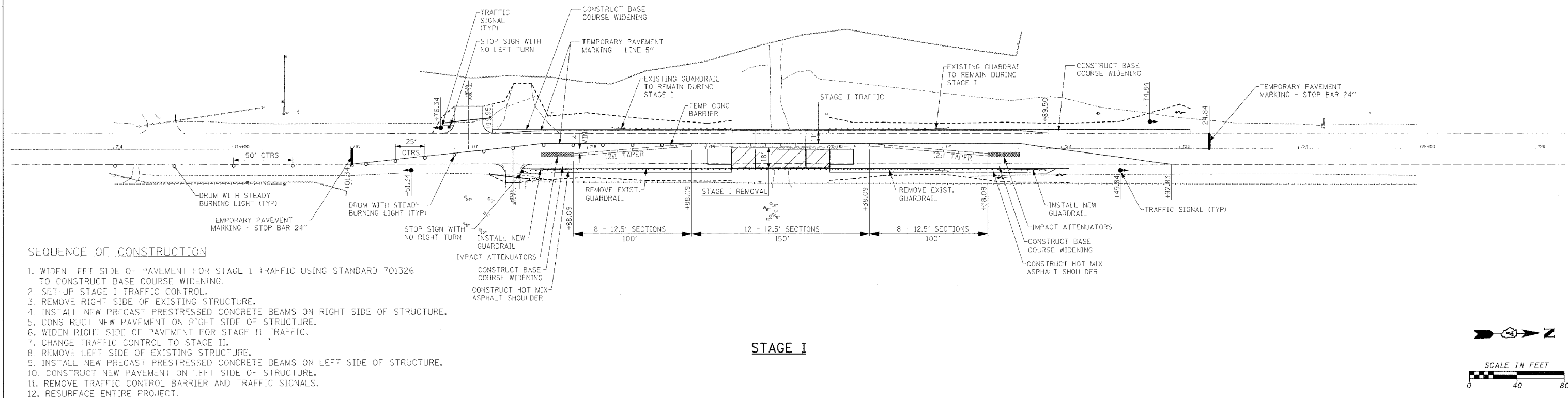


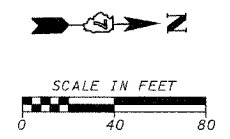
F.A.P. RTE.	SECTION	COUNTY	TOTAL SHEETS	SHEET NO.
•	••	•••	68	14
STA. 716+01.34 TO STA. 723+24.84				
FED. ROAD DIST. NO.	ILLINOIS	FED. AID PROJECT		

- FAP 332 (IL 1); FAP 328 (US 45)
- 101B-1; (8BR-1)B-1
- WABASH / WAYNE



**SEQUENCE OF CONSTRUCTION**

1. WIDEN LEFT SIDE OF PAVEMENT FOR STAGE 1 TRAFFIC USING STANDARD 701326 TO CONSTRUCT BASE COURSE WIDENING.
2. SET UP STAGE I TRAFFIC CONTROL.
3. REMOVE RIGHT SIDE OF EXISTING STRUCTURE.
4. INSTALL NEW PRECAST PRESTRESSED CONCRETE BEAMS ON RIGHT SIDE OF STRUCTURE.
5. CONSTRUCT NEW PAVEMENT ON RIGHT SIDE OF STRUCTURE.
6. WIDEN RIGHT SIDE OF PAVEMENT FOR STAGE II TRAFFIC.
7. CHANGE TRAFFIC CONTROL TO STAGE II.
8. REMOVE LEFT SIDE OF EXISTING STRUCTURE.
9. INSTALL NEW PRECAST PRESTRESSED CONCRETE BEAMS ON LEFT SIDE OF STRUCTURE.
10. CONSTRUCT NEW PAVEMENT ON LEFT SIDE OF STRUCTURE.
11. REMOVE TRAFFIC CONTROL BARRIER AND TRAFFIC SIGNALS.
12. RESURFACE ENTIRE PROJECT.

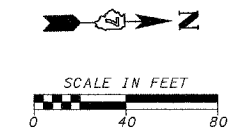
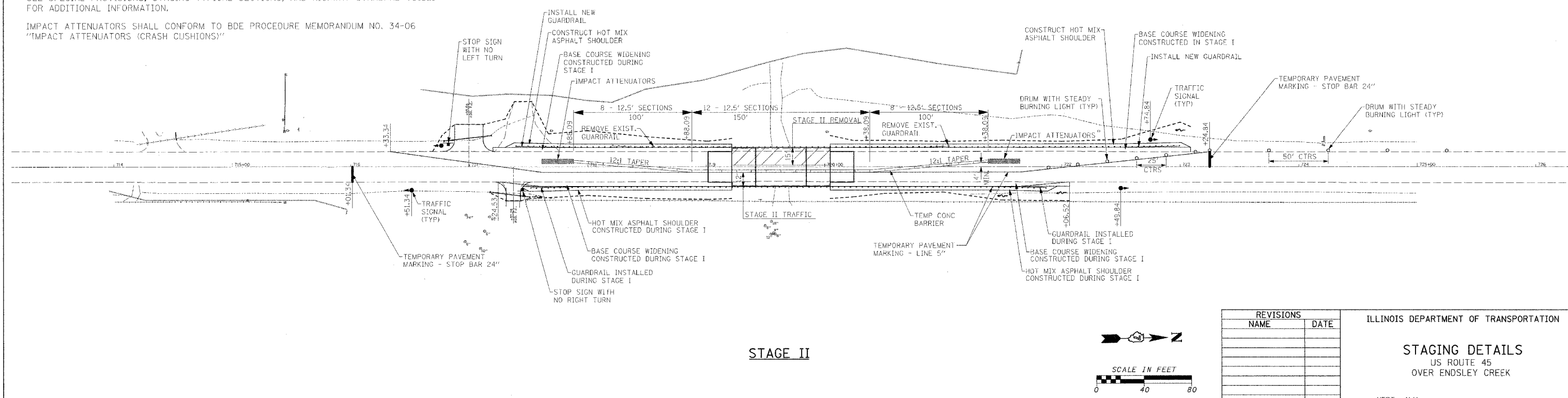


**NOTES**

ADVANCED WARNING SIGNS, TEMPORARY RUMBLE STRIPS, VERTICAL PANELS, PAVEMENT MARKERS, AND BARRICADE REFLECTORS SHALL BE LOCATED IN ACCORDANCE WITH TRAFFIC CONTROL AND PROTECTION STANDARD 701321.

SEE SPECIAL PROVISIONS, STAGING TYPICAL SECTIONS, AND HIGHWAY STANDARD 701321 FOR ADDITIONAL INFORMATION.

IMPACT ATTENUATORS SHALL CONFORM TO BDE PROCEDURE MEMORANDUM NO. 34-06 "IMPACT ATTENUATORS (CRASH CUSHIONS)"



REVISIONS	
NAME	DATE

ILLINOIS DEPARTMENT OF TRANSPORTATION

**STAGING DETAILS**  
US ROUTE 45  
OVER ENDSLEY CREEK

SCALE: VERT. N/A  
HORIZ. 1" = 40'  
DATE 3/15/2007

DRAWN BY TJQ  
CHECKED BY RPJ

PLOT DATE = 3/15/07  
FILE NAME = STAGEL028.DGN