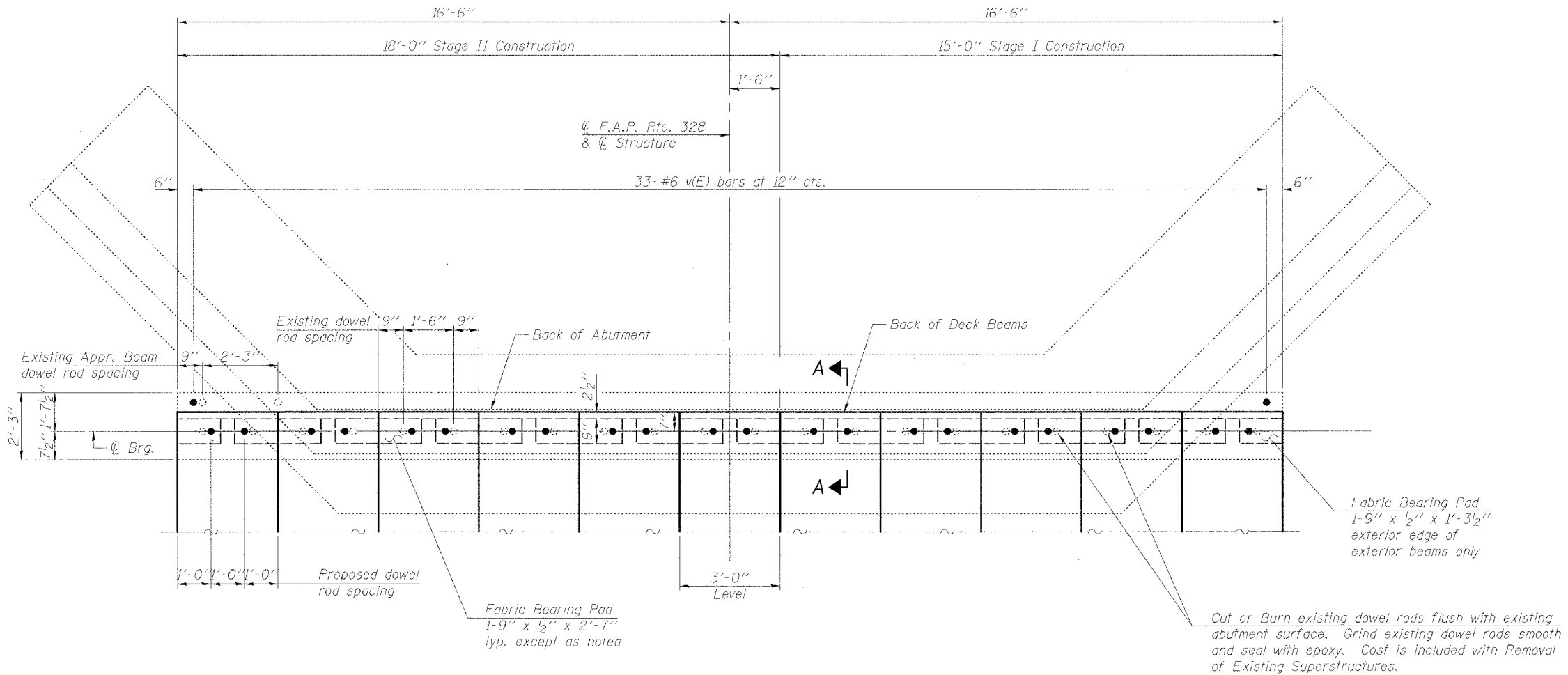


STATE OF ILLINOIS  
DEPARTMENT OF TRANSPORTATION

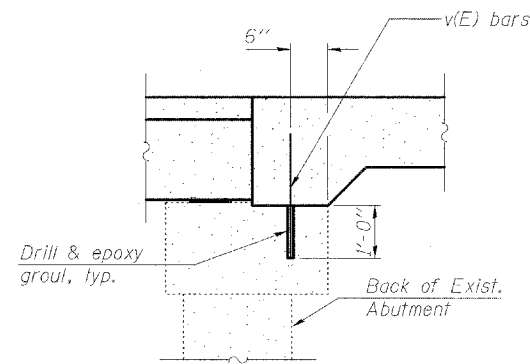
ROUTE NO.	SECTION	COUNTY	TOTAL SHEETS	SHEET NO.	SHEET NO. 9 13 SHEETS
F.A.P. 328	(8BR-1) B-1	WAYNE	68	27	
FED. ROAD DIST. NO. 7	ILLINOIS	FED. AID PROJECT-			

Contract #74003



**PLAN**

(N. Abutment Shown, S. Abutment is a mirror image)  
(Concrete wearing surface not shown)



**SECTION A-A**

**BAR LIST**

Bar	No.	Size	Length	Shape
v(E)	66	#6	2'-6"	—
Reinforcement Bars, Epoxy Coated		Pound	250	

DESIGNED	JJD
CHECKED	EML
DRAWN	JJD
CHECKED	EML

**HORNER & SHIFRIN, INC.**  
ENGINEERS

**ABUTMENT DETAILS**  
F.A.P. ROUTE 328 - SECTION (8BR-1)B-1  
WAYNE COUNTY  
STATION 719+63.09  
STRUCTURE NO. 096-0020