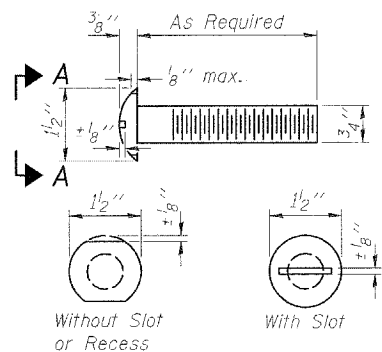


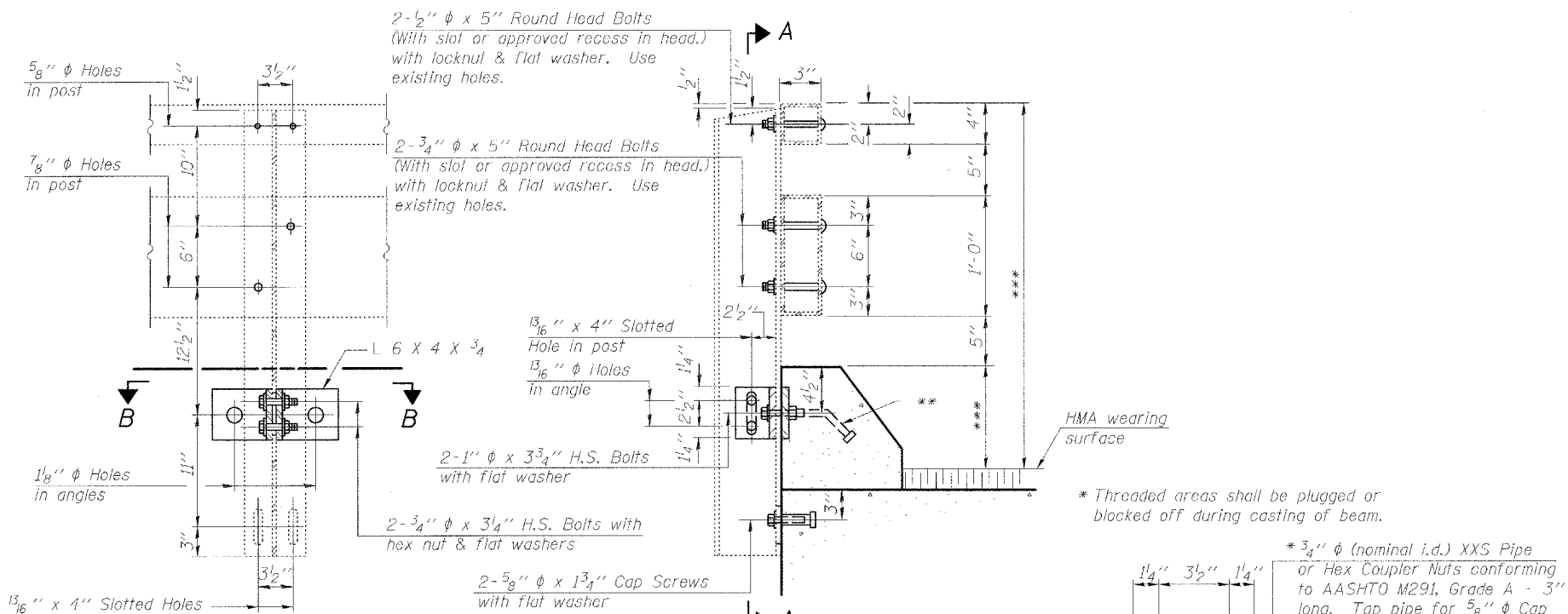
STATE OF ILLINOIS
DEPARTMENT OF TRANSPORTATION

ROUTE NO.	SECTION	COUNTY	TOTAL SHEETS	SHEET NO.
F.A.P. 328	(8BR-1) B-1	WAYNE	68	13
FED. ROAD DIST. NO. 7	ILLINOIS	FED. AID PROJECT		

Contract #74003

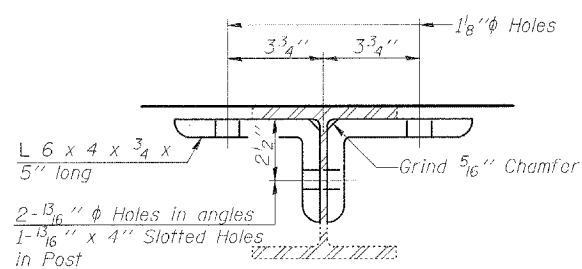


VIEW A-A
ROUND HEAD BOLT

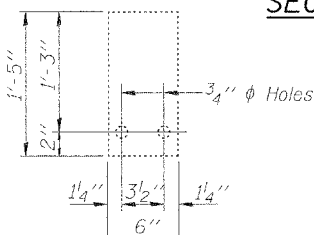


SECTION A-A

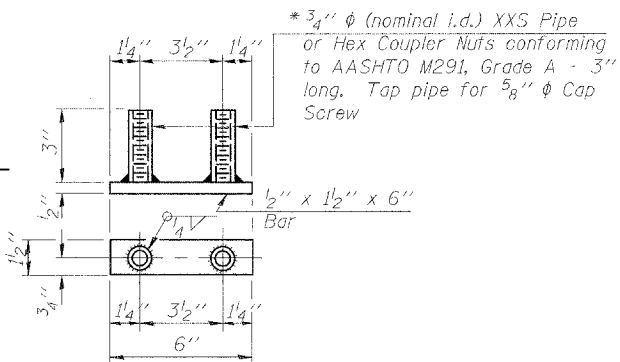
SECTION AT RAIL POST



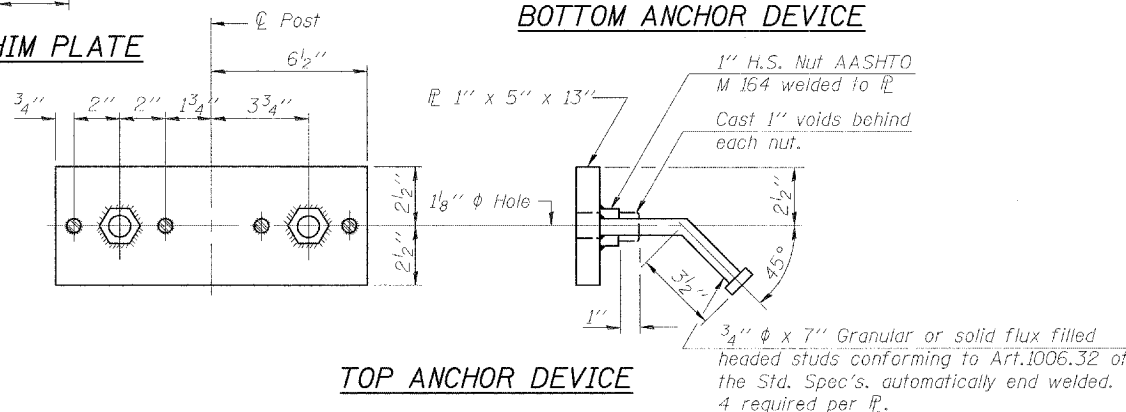
SECTION B-B



1/4" SHIM PLATE



BOTTOM ANCHOR DEVICE



TOP ANCHOR DEVICE

Notes:

- All field drilled holes shall be coated with an approved zinc rich paint before erection.
- For multi-span bridges, existing 1/4" x 6" x 1'-5" galvanized steel shims shall be re-used to align rail between adjacent spans.
- All steel rail elements shall be galvanized according to Article 509.05 of the Standard Specifications.
- ** The studs of the anchor devices shall be placed below the top reinforcement bars and the outermost longitudinal reinforcement bar shall be placed directly above the studs of the rail post anchor device.
- *** Match height of existing Bridge Railing.
- Cost of reinstalling existing posts and rails, anchor devices and all accessories shall be included with Removing and Re-Erecting Existing Railing.
- For rail post spacing, see sheet 12 of 13.

DESIGNED	JJD
CHECKED	EML
DRAWN	KLH
CHECKED	EML

HORNER & SHIFRIN, INC.
ENGINEERS

PRE-STAGE I DETAILS III
F.A.P. ROUTE 328 - SECTION (8BR-1)B-1
WAYNE COUNTY
STATION 719+63.09
STRUCTURE NO. 096-0020