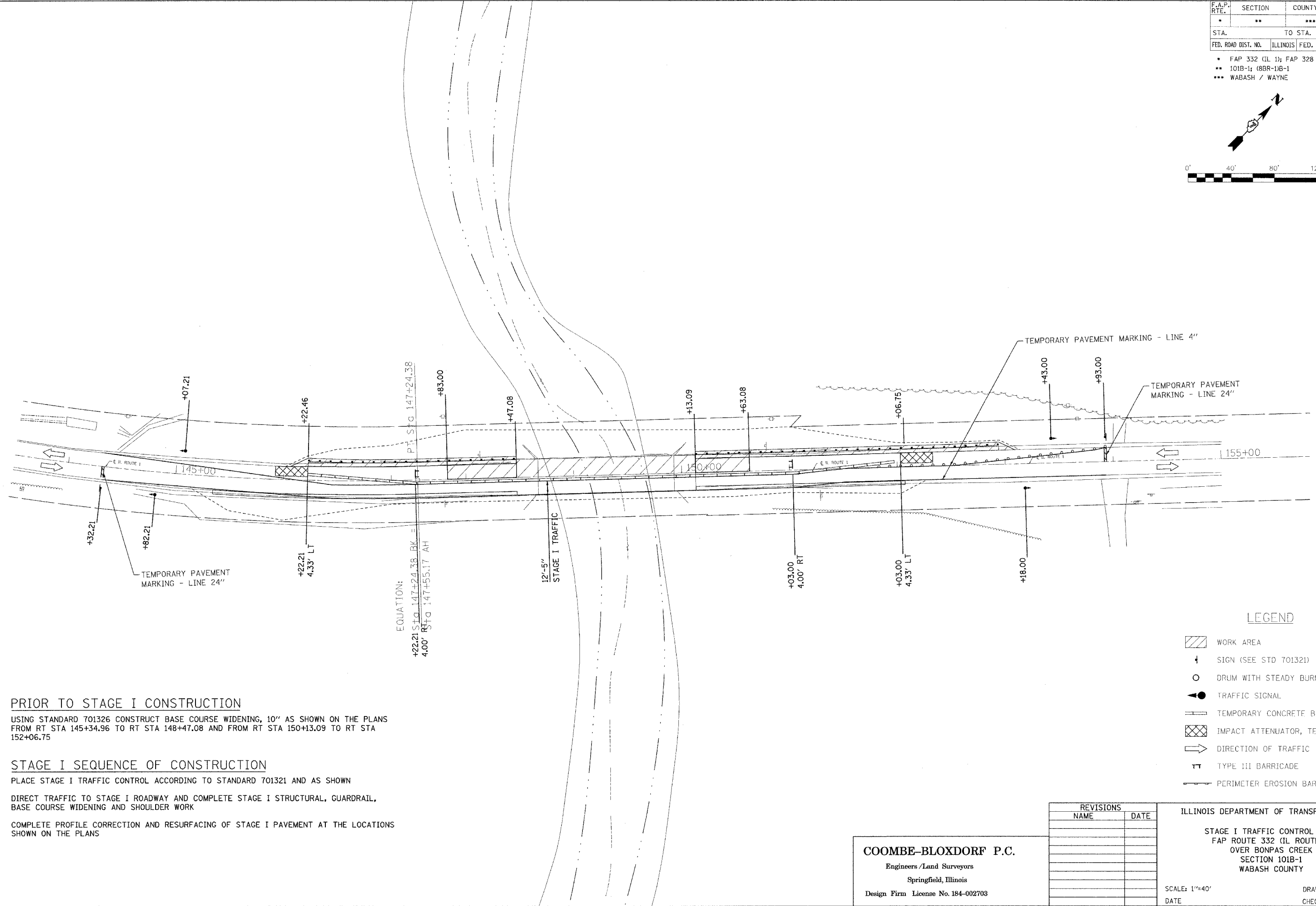
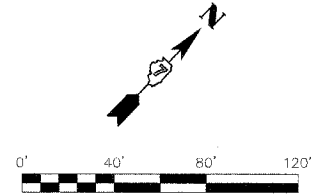


F.A.P. RTE.	SECTION	COUNTY	TOTAL SHEETS	SHEET NO.
*	**	***	68	46

STA.	TO STA.
FED. ROAD DIST. NO.	ILLINOIS

FED. AID PROJECT  
 \* FAP 332 (IL 1); FAP 328 (US 45)  
 \*\* 101B-1; (BBR-1B-1)  
 \*\*\* WABASH / WAYNE



**PRIOR TO STAGE I CONSTRUCTION**  
 USING STANDARD 701326 CONSTRUCT BASE COURSE WIDENING, 10" AS SHOWN ON THE PLANS FROM RT STA 145+34.96 TO RT STA 148+47.08 AND FROM RT STA 150+13.09 TO RT STA 152+06.75

**STAGE I SEQUENCE OF CONSTRUCTION**  
 PLACE STAGE I TRAFFIC CONTROL ACCORDING TO STANDARD 701321 AND AS SHOWN

DIRECT TRAFFIC TO STAGE I ROADWAY AND COMPLETE STAGE I STRUCTURAL, GUARDRAIL, BASE COURSE WIDENING AND SHOULDER WORK

COMPLETE PROFILE CORRECTION AND RESURFACING OF STAGE I PAVEMENT AT THE LOCATIONS SHOWN ON THE PLANS

- LEGEND**
- WORK AREA
  - SIGN (SEE STD 701321)
  - DRUM WITH STEADY BURNING LIGHT
  - TRAFFIC SIGNAL
  - TEMPORARY CONCRETE BARRIER
  - IMPACT ATTENUATOR, TEMPORARY
  - DIRECTION OF TRAFFIC
  - TYPE III BARRICADE
  - PERIMETER EROSION BARRIER

REVISIONS	
NAME	DATE

**COOMBE-BLOXDORF P.C.**  
 Engineers / Land Surveyors  
 Springfield, Illinois  
 Design Firm License No. 184-002703

ILLINOIS DEPARTMENT OF TRANSPORTATION

STAGE I TRAFFIC CONTROL PLAN  
 FAP ROUTE 332 (IL ROUTE 1)  
 OVER BONPAS CREEK  
 SECTION 101B-1  
 WABASH COUNTY

SCALE: 1"=40'  
 DATE \_\_\_\_\_ DRAWN BY \_\_\_\_\_  
 CHECKED BY \_\_\_\_\_

Plot Date: 3/17/2007  
 Plot Time: 8:58:07 AM  
 File Name: s:\projects\74003\Construction\Plans\14\_stage1.pprint.dgn  
 Plot Style: R14.ctb  
 User Name: j\j\j\j