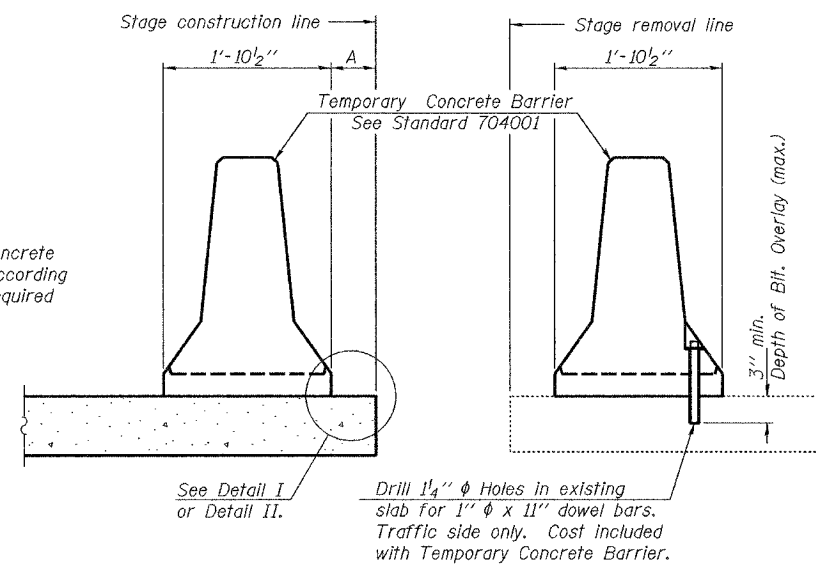


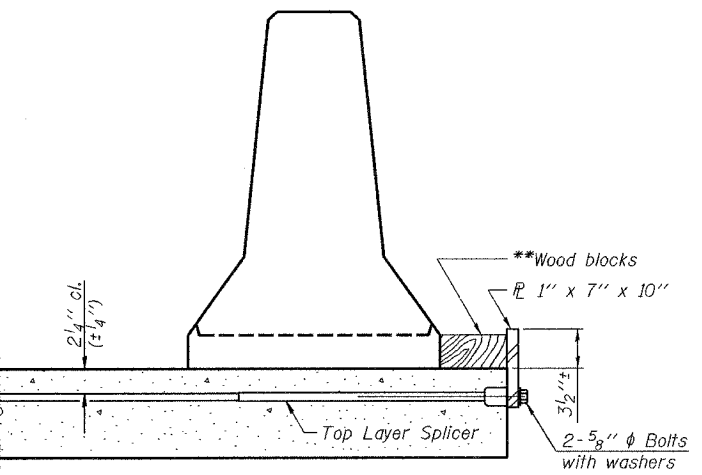
| | | | | | |
|-----------------------|---------|----------|------------------|-----------|--------------------------|
| ROUTE NO. | SECTION | COUNTY | TOTAL SHEETS | SHEET NO. | SHEET NO. 3 11 SHEETS |
| FAP 332 | 101B-1 | WABASH | 68 | 54 | |
| FED. ROAD DIST. NO. 7 | | BILLINGS | FED. AID PROJECT | | |

Contract # 74003

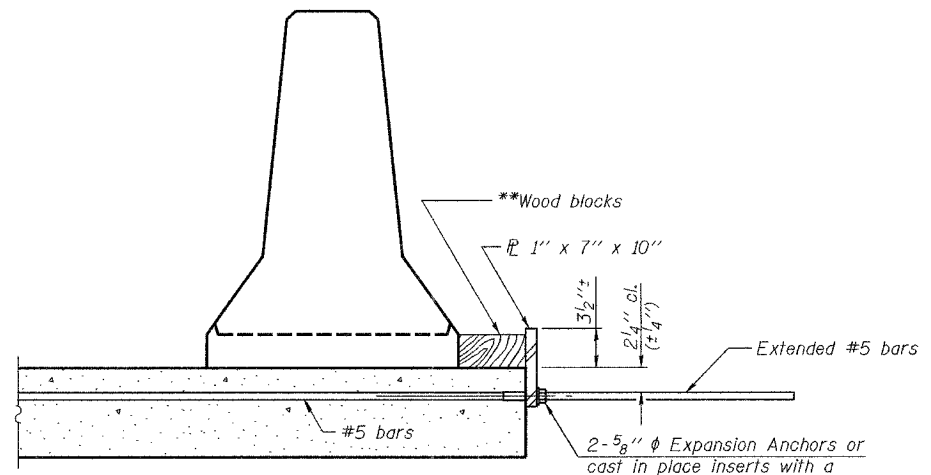


NEW SLAB EXISTING SLAB

SECTIONS THRU SLAB



DETAIL I



DETAIL II

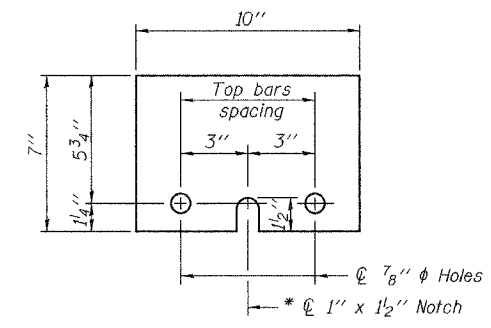
** Wood blocks may be omitted when required to provide minimum stage traffic lane width. When the wood blocks are omitted, the concrete barrier shall be in direct contact with the steel retainer plate.

NOTES

Detail I - With Bar Splicer or Couplers:
Connect one (1) 1"x7"x10" steel \bar{R} to the top layer of couplers with 2-5/8" ϕ bolts screwed to coupler at approximate \bar{C} of each barrier panel.

Detail II - With Extended Reinforcement Bars:
Connect one (1) 1"x7"x10" steel \bar{R} to the concrete slab with 2-5/8" ϕ Expansion Anchors or cast in place inserts spaced between the top layer of reinforcement at approximate \bar{C} of each barrier panel.

Cost of anchorage is included with Temporary Concrete Barrier. The 1" x 7" x 10" plate shall not be removed until stage II construction forms and all reinforcement bars are in place and the concrete is ready to be placed.



STEEL RETAINER 1" x 7" x 10"
* Required only with Detail II

PLOT DATE = 03/15/07
 FILE NAME = I:\933-0005-rpt-3-r-27-TEMP-CONC-BARRIER.dgn
 PLOT SCALE = 0:1,0000 1" / IN.
 USER NAME = TFG

R-27 11-1-06

| | |
|---|--|
| ILLINOIS DEPARTMENT OF TRANSPORTATION | |
| SHEET TITLE TEMPORARY CONCRETE BARRIER FOR STAGE CONSTRUCTION | |
| PROJECT FAP 332 OVER BONPAS CREEK FAP ROUTE 332 (IL 1) SECTION 101B-1 WABASH COUNTY STATION 149+30 SN 093-0005 | PROJECT NO. 06026 DATE 03/15/07 DRAWN BY TFG CHECKED BY GB/CME/MCB DRAWING NO. |
| COOMBE-BLOXDORF P.C. Engineers / Land Surveyors Springfield, Illinois Design Firm License No. 184-002703 | 3 OF 11 SHTS |