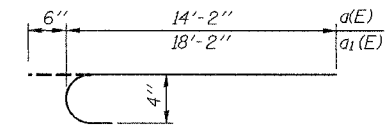


ROUTE NO.	SECTION	COUNTY	TOTAL SHEETS	SHEET NO.	SHEET NO. 4 11 SHEETS
FAP 332	101B-1	WABASH	68	55	
FED. ROAD DIST. NO. 7		ILLINOIS	FED. AID PROJECT-		

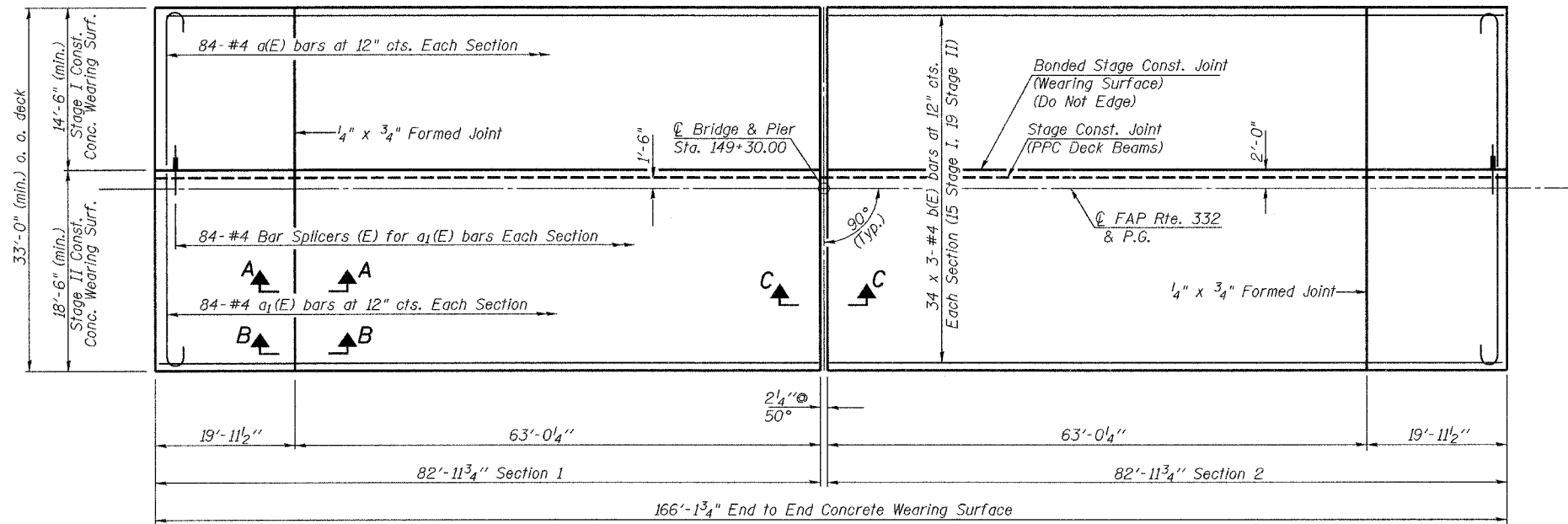
Contract # 74003



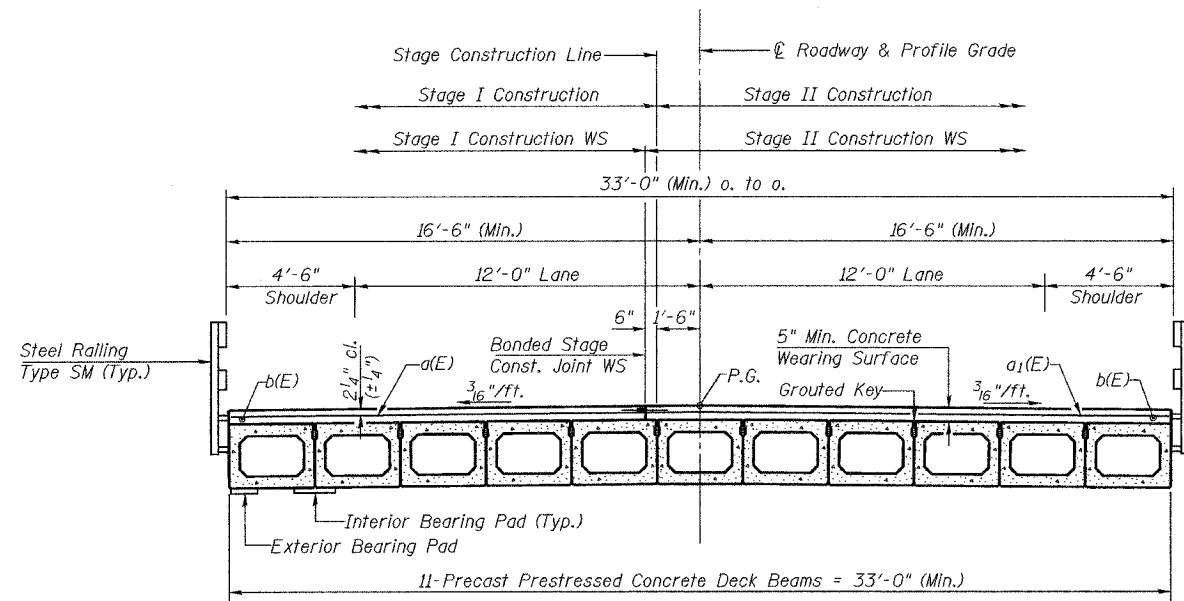
BARS a(E) and a1(E)

**SUPERSTRUCTURE
BILL OF MATERIAL**

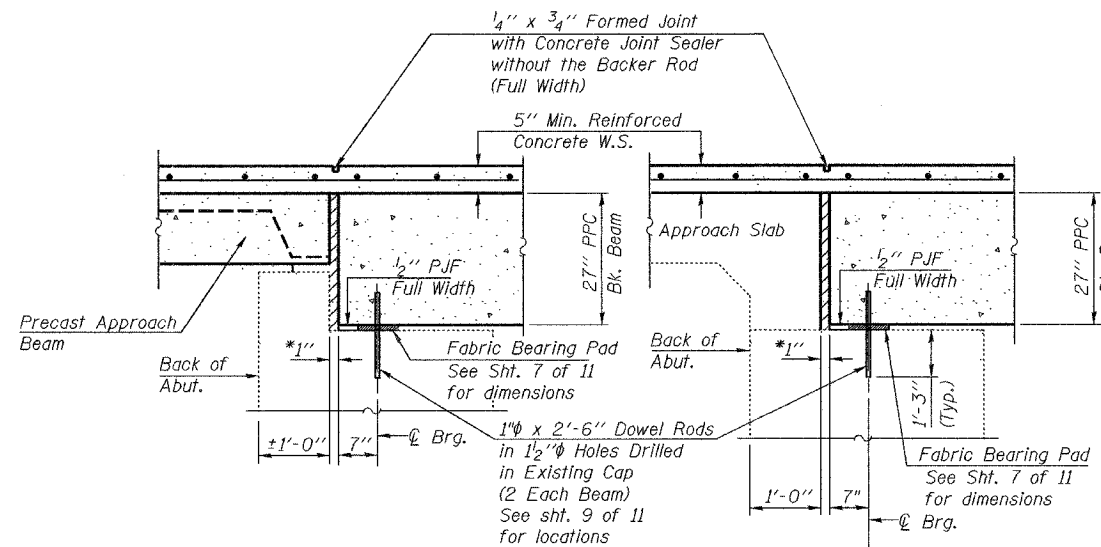
Bar	No.	Size	Length	Shape
a(E)	168	#4	14'-8"	
a1(E)	168	#4	18'-8"	
b(E)	204	#4	28'-3"	
Conc. Wearing Surface, 5"	Sq. Yd.		613	
Reinforcement Bars (Epoxy Coated)	Pound		7590	
Bar Splicers	Each		168	



PLAN
Concrete Wearing Surface

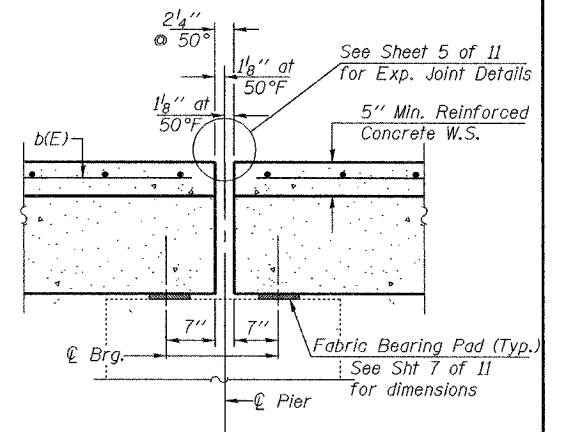


CROSS SECTION
(Looking Northeast)



SECTION B-B

SECTION A-A

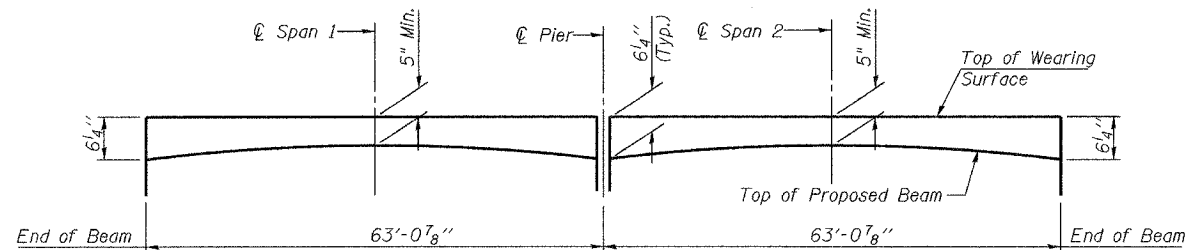


SECTION C-C

*1" Joint shall be filled with non-shrink grout.
1" dimension may vary to accommodate tolerance in beam lengths.

NOTES

Bars indicated thus 34 x 3-#4 etc. indicates 34 lines of bars with 3 lengths per line. See sheet 2 & 8 of 11 for Rail details. See sheet 11 of 11 for Bar Splicer Details. After beams have been erected, holes shall be drilled into substructure and anchor dowels placed. Dowel holes shall be filled with non-shrink grout to top of beam and allowed to cure minimum 24 hours prior to grouting the shear keys. The 5" wearing surface will be poured after the beams have been erected and the joints are grouted.



REINFORCED CONCRETE WEARING SURFACE CAMBER DIAGRAM

PLOT DATE = 04/17/2007
FILE NAME = \\s093-005-shy-4-superstructure.dgn
PLOT SCALE = 01/0000" = 1" / IN.
USER NAME = TFC

ILLINOIS DEPARTMENT OF TRANSPORTATION	
SHEET TITLE SUPERSTRUCTURE	
PROJECT FAP 332 OVER BONPAS CREEK FAP ROUTE 332 (IL 1) SECTION 101B-1 WABASH COUNTY STATION 149+30 SN 093-0005	PROJECT NO. 06026 DATE 04/17/07 DRAWN BY TFG CHECKED BY GB/CME/MCB DRAWING NO.
COOMBE-BLOXDORF P.C. Engineers / Land Surveyors Springfield, Illinois Design Firm License No. 184-002703	
4 OF 11 SHTS	