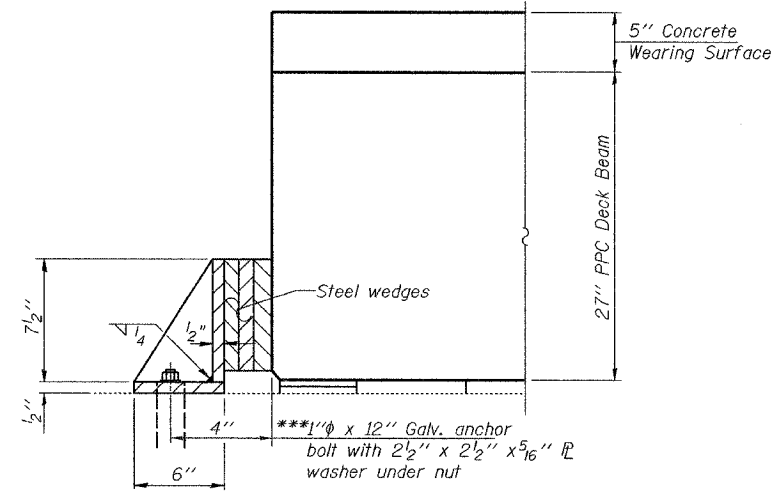


ABUTMENT PLAN
(showing dowel rod and beam locations)

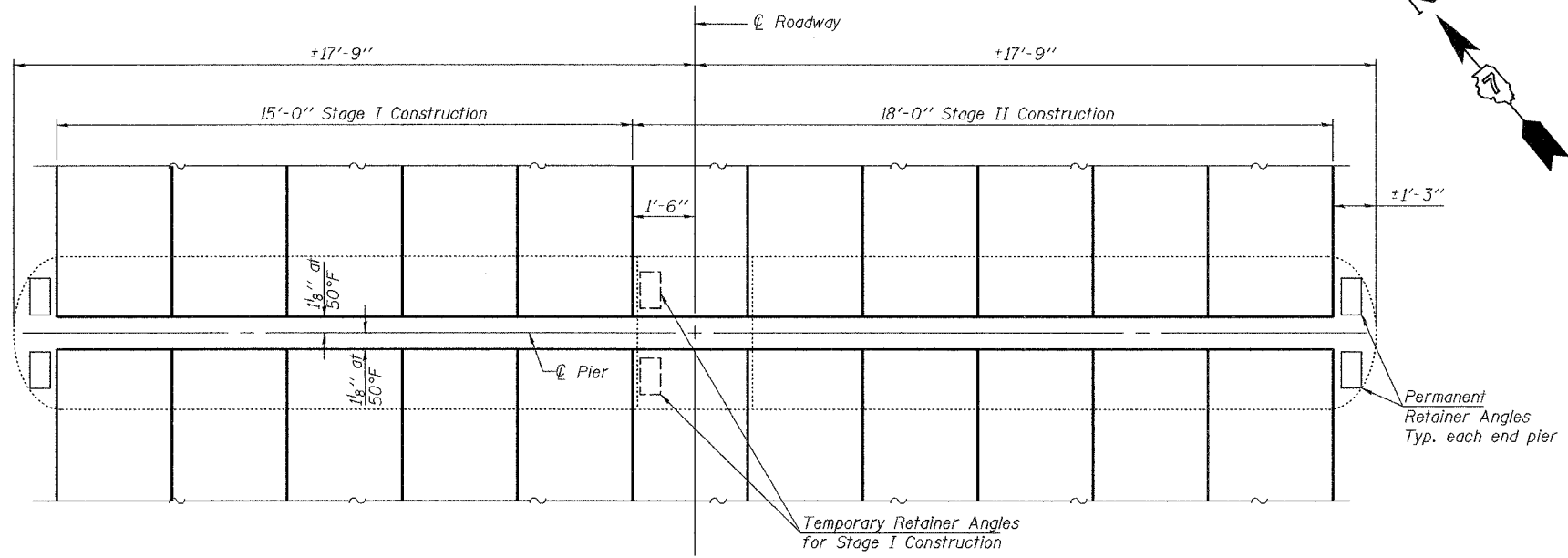
*Burn existing dowel rods flush with top of existing abutment cap. Grind existing dowel rods smooth and seal with epoxy. Cost is included with Removal of Existing Superstructures.

**Dimension may vary to accommodate tolerance in beam lengths.

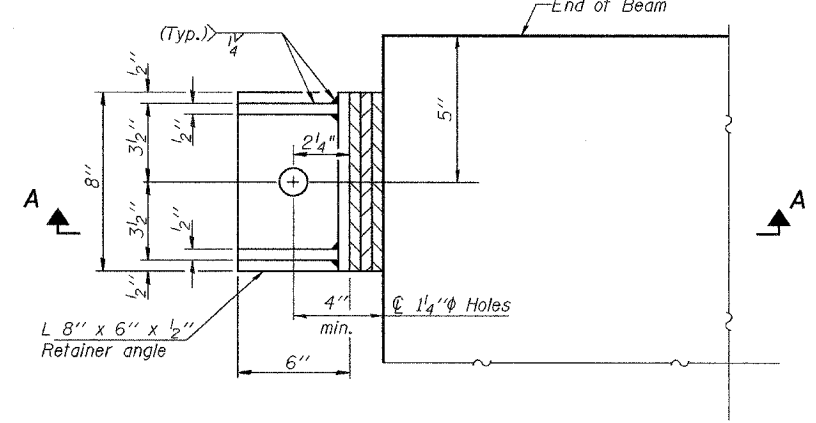


SECTION A-A

***Anchor bolts may be cast into the masonry or approved threaded rod may be placed in drilled holes and grouted in place. Cost included with Precast Prestressed Concrete Deck Beams.



PIER PLAN



PLAN RETAINER ANGLE
(Temporary and Permanent)

NOTES

Install permanent retainers at pier at west end of cap and temporary retainer at Stage Line prior to grouting Stage I shear keys. After Stage I concrete and concrete wearing surface is poured and cured the temporary retainer shall be removed. Burn existing anchor bolts flush with existing pier surface. Grind anchor bolts smooth and seal with epoxy. Install permanent retainer at east end of pier cap prior to grouting Stage II shear keys. The steel wedges shall be removed after the strip seal has been installed. Cost of retainers, accessories and removal of temporary retainer is included with Precast Prestressed Concrete Deck Beams.

The side retainers shall be galvanized after shop fabrication according to AASHTO M111 and ASTM 385.

ILLINOIS DEPARTMENT OF TRANSPORTATION			
SHEET TITLE			
ABUTMENT & PIER DETAILS			
PROJECT	FAP 332 OVER BONPAS CREEK	PROJECT NO.	06026
	FAP ROUTE 332 (IL 1) SECTION 101B-1	SCALE	
	WABASH COUNTY	DATE	03/15/07
	STATION 149+30	DRAWN BY	TFG
	SN 093-0005	CHECKED BY	CME/MCB
COOMBE-BLOXDORF P.C.			DRAWING NO.
Engineers / Land Surveyors			9
Springfield, Illinois			
Design Firm License No. 184-002703			OF 11 SHTS

PLOT DATE = 03/15/2007
FILE NAME = ..\093-0005-ent-9-abutment-ds\table.dgn
PLOT SCALE = 28.0000 1" = 1'-0"
USER NAME = TFG