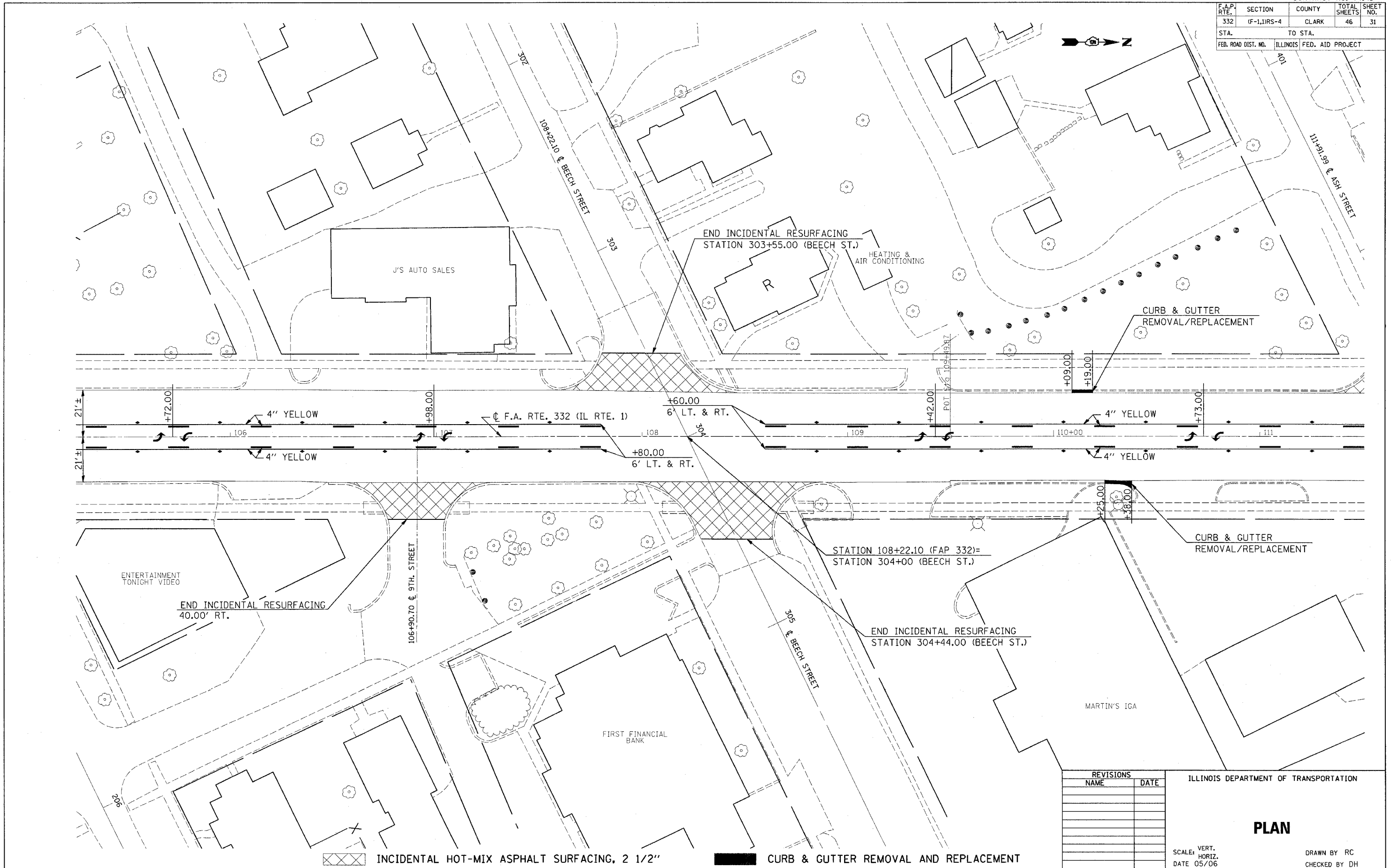


F.A.P. RTE.	SECTION	COUNTY	TOTAL SHEETS	SHEET NO.
332	(F-1,1)RS-4	CLARK	46	31
STA.		TO STA.		
FED. ROAD DIST. NO.		ILLINOIS FED. AID PROJECT		



PLOT DATE = 3/13/2007
 PLOT SCALE = 20,000 / 1" = 1' = 1" / 20,000
 USER NAME = staff\erick

INCIDENTAL HOT-MIX ASPHALT SURFACING, 2 1/2"
 CURB & GUTTER REMOVAL AND REPLACEMENT

REVISIONS	
NAME	DATE

ILLINOIS DEPARTMENT OF TRANSPORTATION

PLAN

VERT. SCALE: 1" = 20'
 HORIZ. SCALE: 1" = 40'
 DATE 05/06

DRAWN BY RC
 CHECKED BY DH