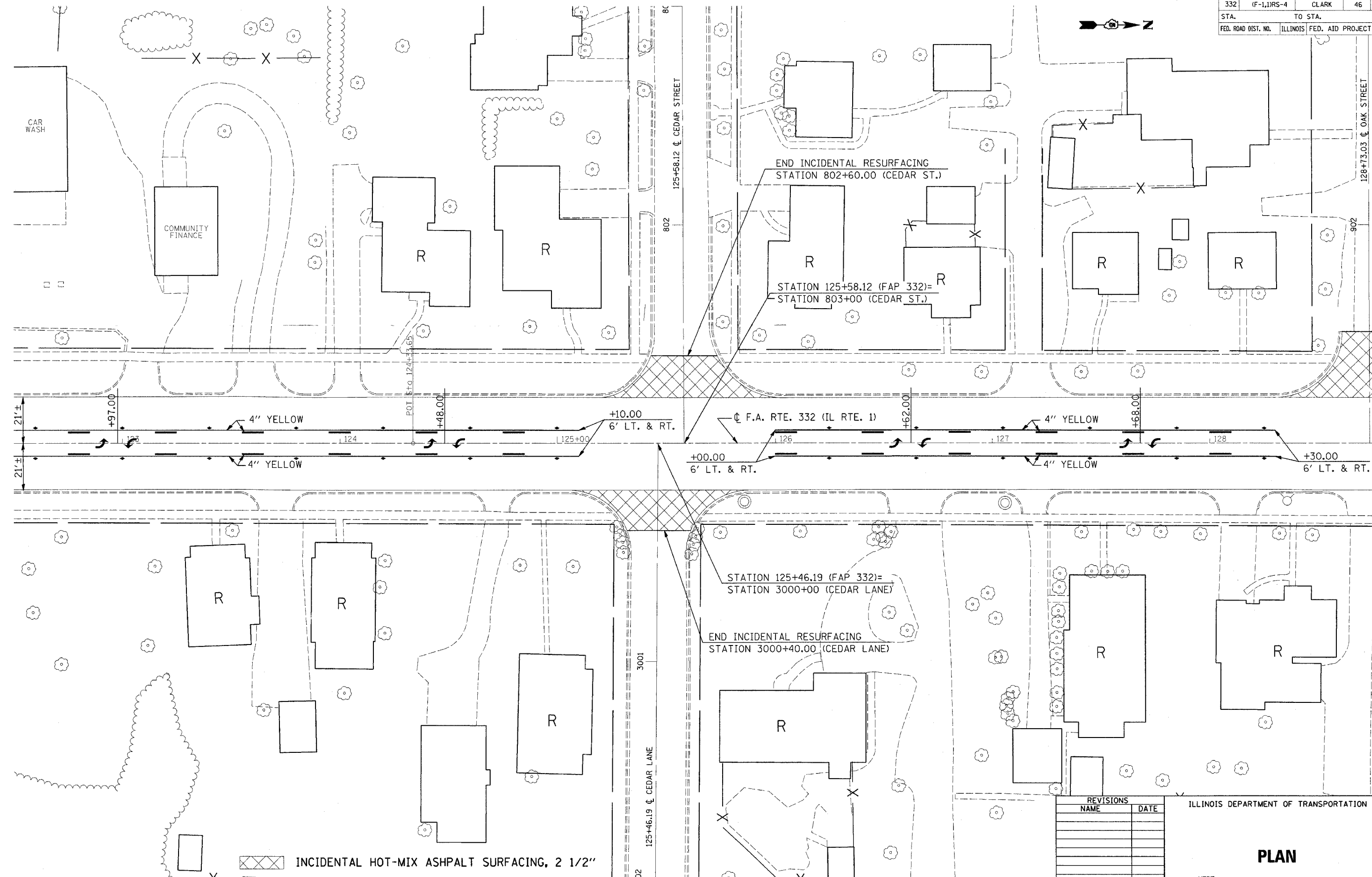


F.A.P. RTE.	SECTION	COUNTY	TOTAL SHEETS	SHEET NO.
332	(F-1)RS-4	CLARK	46	34
STA.		TO STA.		
FED. ROAD DIST. NO.		ILLINOIS	FED. AID PROJECT	



END INCIDENTAL RESURFACING  
STATION 802+60.00 (CEDAR ST.)

STATION 125+58.12 (FAP 332)=  
STATION 803+00 (CEDAR ST.)

STATION 125+46.19 (FAP 332)=  
STATION 3000+00 (CEDAR LANE)

END INCIDENTAL RESURFACING  
STATION 3000+40.00 (CEDAR LANE)

INCIDENTAL HOT-MIX ASPHALT SURFACING, 2 1/2"

REVISIONS	
NAME	DATE

ILLINOIS DEPARTMENT OF TRANSPORTATION

**PLAN**

SCALE: VERT.  
HORIZ.  
DATE 05/06

DRAWN BY RC  
CHECKED BY DH

PLOT DATE = 2/13/2007  
FILE NAME = c:\projects\74143\74143\rsuping\_sheetal.dgn  
PLOT SCALE = 28.800' / IN.  
USER NAME = staff\rmk