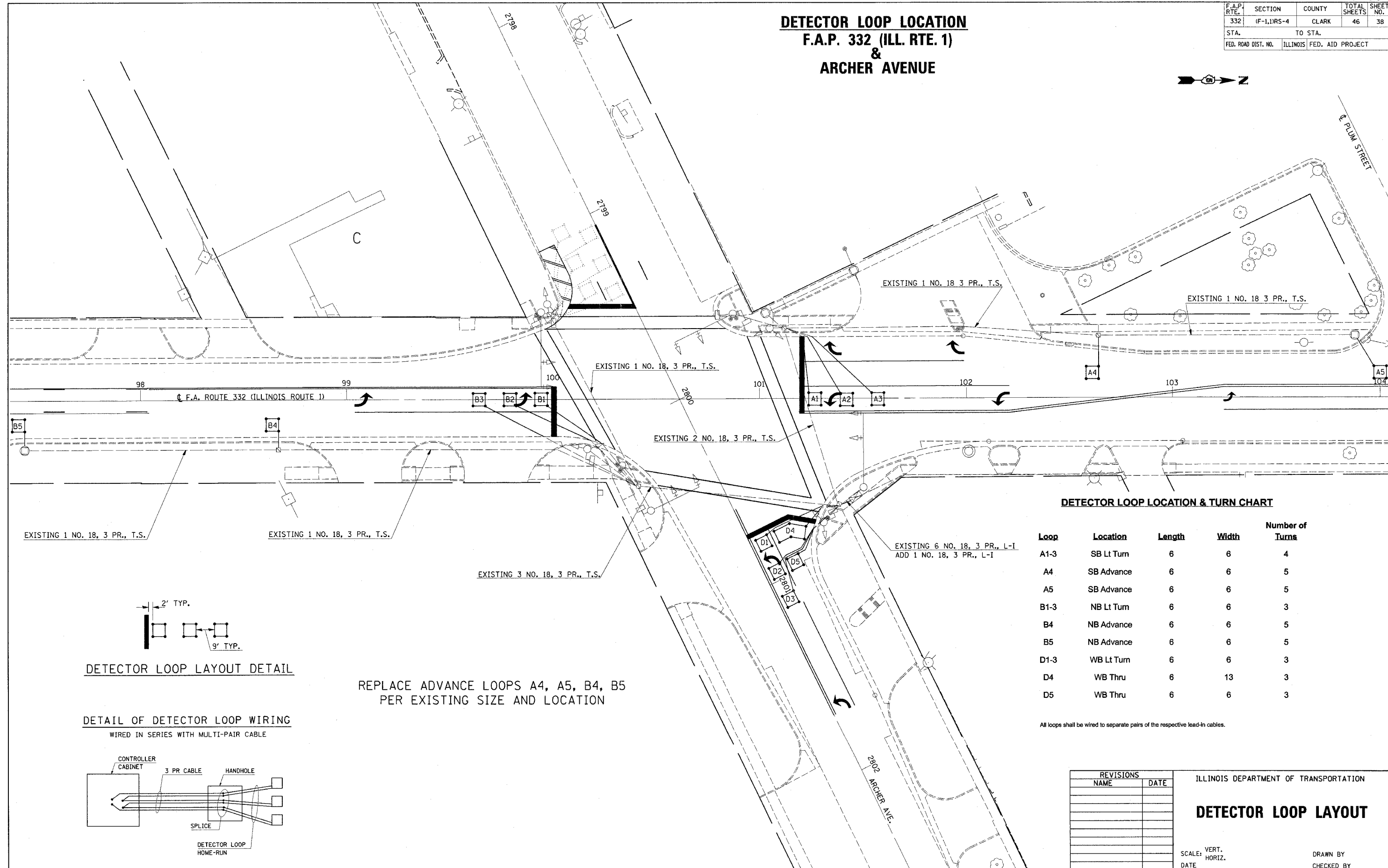


F.A.P. RTE.	SECTION	COUNTY	TOTAL SHEETS	SHEET NO.
332	IF-1,11RS-4	CLARK	46	38
STA.		TO STA.		
FED. ROAD DIST. NO.		ILLINOIS FED. AID PROJECT		

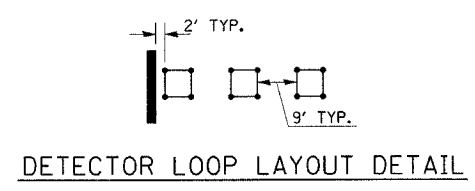
DETECTOR LOOP LOCATION F.A.P. 332 (ILL. RTE. 1) & ARCHER AVENUE



DETECTOR LOOP LOCATION & TURN CHART

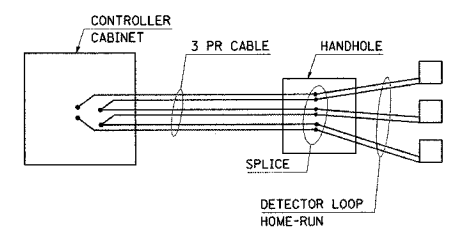
Loop	Location	Length	Width	Number of Turns
A1-3	SB Lt Turn	6	6	4
A4	SB Advance	6	6	5
A5	SB Advance	6	6	5
B1-3	NB Lt Turn	6	6	3
B4	NB Advance	6	6	5
B5	NB Advance	6	6	5
D1-3	WB Lt Turn	6	6	3
D4	WB Thru	6	13	3
D5	WB Thru	6	6	3

All loops shall be wired to separate pairs of the respective lead-in cables.



REPLACE ADVANCE LOOPS A4, A5, B4, B5
PER EXISTING SIZE AND LOCATION

DETAIL OF DETECTOR LOOP WIRING
WIRED IN SERIES WITH MULTI-PAIR CABLE



REVISIONS	
NAME	DATE

ILLINOIS DEPARTMENT OF TRANSPORTATION

DETECTOR LOOP LAYOUT

SCALE: VERT. _____
 HORIZ. _____

DRAWN BY _____
CHECKED BY _____

PLOT DATE = 3/12/2007
 FILE NAME = c:\pro\mesa\74143\loop.dgn
 PLOT SCALE = 20.0000 / IN.
 USER NAME = starfermk