

F.A.I. RTE.	SECTION	COUNTY	TOTAL SHEETS	SHEET NO.
70	*	**	18	1

- D-7 JOINT REPAIRS 2007-1
- FAYETTE

D-97-064-06

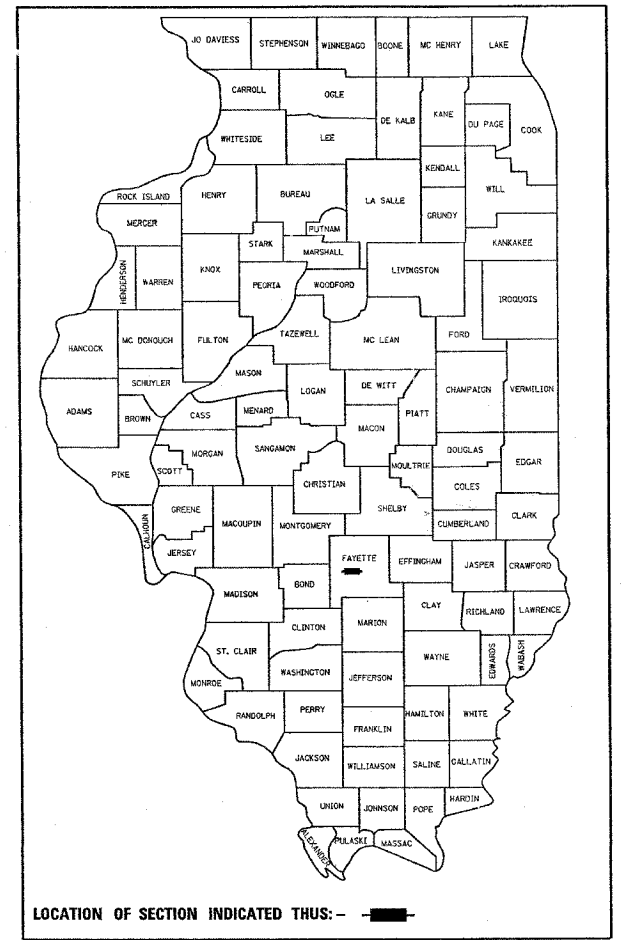
STATE OF ILLINOIS
 DEPARTMENT OF TRANSPORTATION
 DIVISION OF HIGHWAYS

**PROPOSED
 HIGHWAY PLANS**

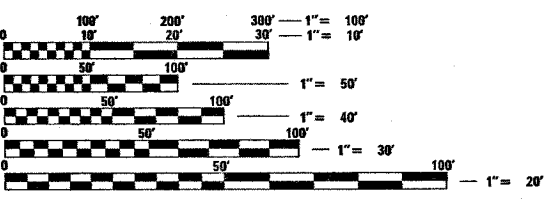
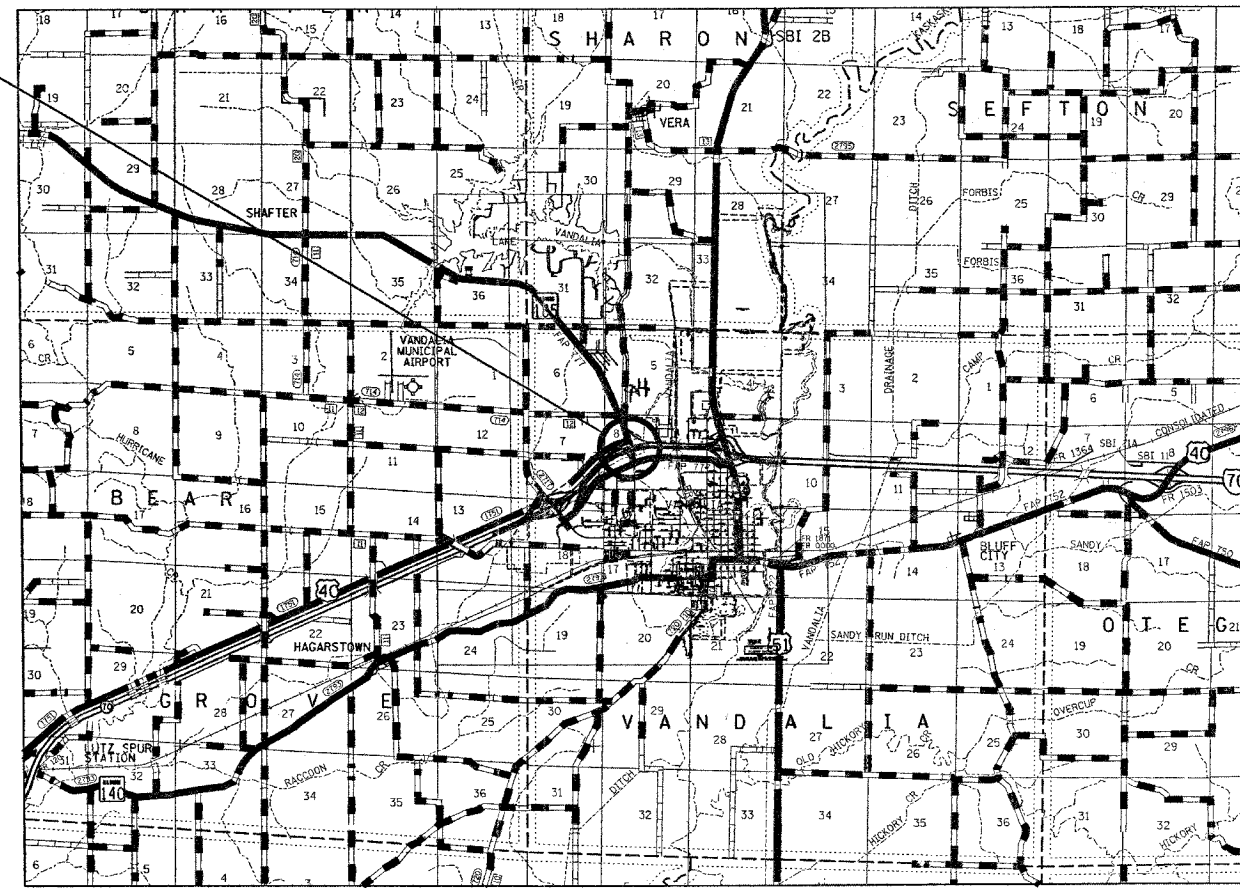
FAI ROUTE 70 (I-70)
 D-7 JOINT REPAIRS 2007-1
 FAYETTE COUNTY

C-97-110-06

SEE SHEET 2 FOR INDEX OF SHEETS



STRUCTURE NO. 026-0013
 BEGINING STA. 440+29.26
 THREE SPAN STRUCTURE
 W27X84 STEEL I BEAMS
 WITH REINFORCED CONCRETE DECK
 BK. TO BK. ABUTMENT = 125'-6" (ALONG CHORD)
 END STA. 460+32.00



FULL SIZE PLANS HAVE BEEN PREPARED USING STANDARD ENGINEERING SCALES. REDUCED SIZED PLANS WILL NOT CONFORM TO STANDARD SCALES. IN MAKING MEASUREMENTS ON REDUCED PLANS, THE ABOVE SCALES MAY BE USED.

J.U.L.I.E.
 JOINT UTILITY LOCATION INFORMATION FOR EXCAVATION
 1-800-892-0123

CONTRACT NO. 74191

ADT (2006) = 20500

GROSS LENGTH = 2003.0 FT
 NET LENGTH = 2003.0 FT

STATE OF ILLINOIS
 DEPARTMENT OF TRANSPORTATION
 DIVISION OF HIGHWAYS

SUBMITTED March 29th 2007

Christina M. Reed
 DEPUTY DIRECTOR OF HIGHWAYS, REGION FOUR ENGINEER

May 11, 2007
Eve E. Hamel
 INTERIM ENGINEER OF DESIGN AND ENVIRONMENT

May 11, 2007
Milton R. Searles
 DIRECTOR OF HIGHWAYS, CHIEF ENGINEER

**PRINTED BY THE AUTHORITY
 OF THE STATE OF ILLINOIS**

PROJECT ENGINEER : MIKE ALLEN
 SQUAD LEADER :
 DESIGNER : KEVIN BRADY
 TELEPHONE : 217/342-3951 EX 316 OR 343