

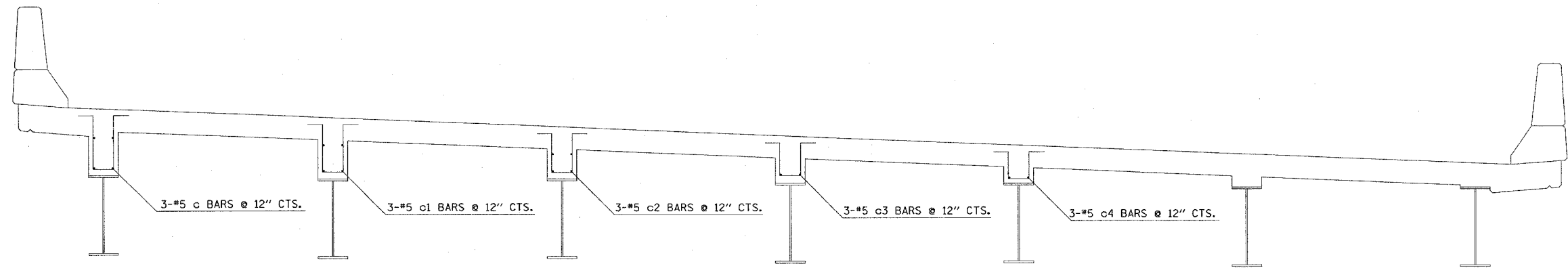
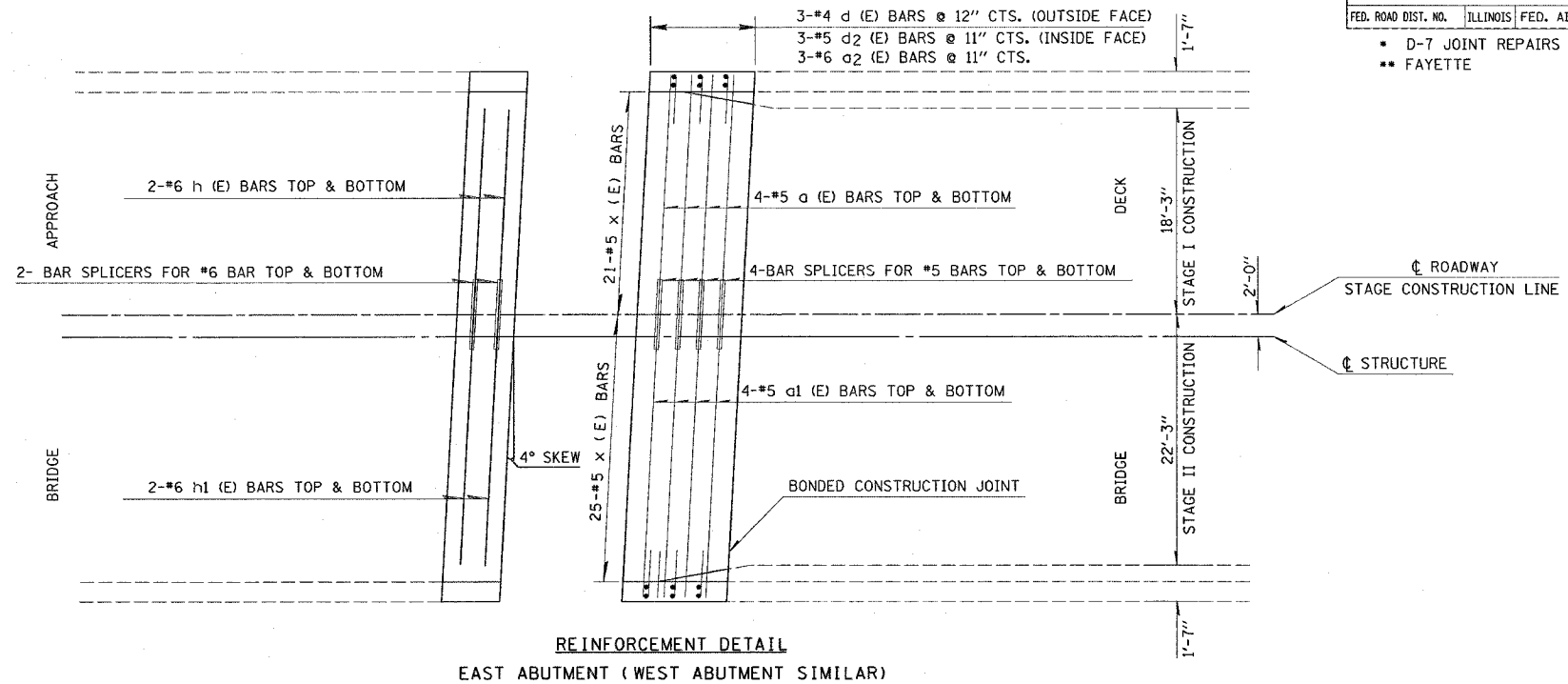
F.A.I. RTE.	SECTION	COUNTY	TOTAL SHEETS	SHEET NO.
		**	10	12
STA.	TO STA.			
FED. ROAD DIST. NO.	ILLINOIS FED. AID PROJECT			

- D-7 JOINT REPAIRS 2007-1
- ** FAYETTE

BAR LIST - PER ABUTMENTS - STR #026-0013

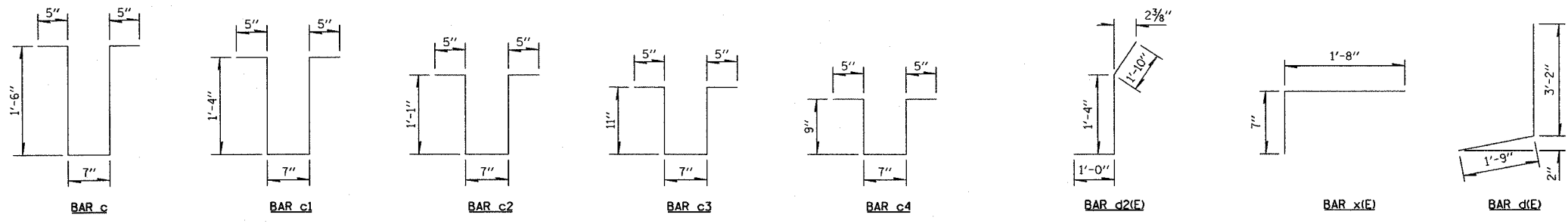
BAR	NUMBER OF BARS		TOTAL	SIZE	LENGTH	SHAPE
	STAGE I	STAGE II				
a (E)	8		8	#5	19'-3"	—
a1 (E)	8		8	#5	23'-3"	—
a2 (E)	3	3	6	#6	4'-0"	—
d (E)	3	3	6	#4	4'-11"	J
d2 (E)	3	3	6	#5	4'-2"	J
h (E)	4		4	#6	18'-6"	—
h1 (E)		4	4	#6	22'-6"	—
x (E)	21	25	46	#5	2'-3"	—
c (E)	3	0	3	#5	4'-5"	U
c1 (E)	3	0	3	#5	4'-1"	U
c2 (E)	3	0	3	#5	3'-7"	U
c3 (E)	0	3	3	#5	3'-3"	U
c4 (E)	0	3	3	#5	2'-11"	U
CONCRETE REMOVAL				CU. YD.	12.3	
REINFORCEMENT BARS (EPOXY COATED)				POUND	1700	
CONCRETE SUPERSTRUCTURE				CU. YD.	12.6	

REINFORCEMENT BARS DESIGNATED (E) SHALL BE EPOXY COATED



DECK CROSS SECTION
(LOOKING EAST)

NOTE: EXISTING REINFORCEMENT BARS ARE TO BE CLEANED, STRAIGHTENED AND INCORPORATED INTO THE NEW CONSTRUCTION. ANY REINFORCEMENT BARS THAT ARE DAMAGED DURING CONCRETE REMOVAL OPERATIONS SHALL BE REPAIRED OR REPLACED USING AN APPROVED BAR SPLICER OR ANCHORAGE SYSTEM (COST INCLUDED IN CONCRETE REMOVAL).



REVISIONS	
NAME	DATE

ILLINOIS DEPARTMENT OF TRANSPORTATION
EXPANSION JOINT & REBAR DETAILS
EAST & WEST ABUTMENTS
SN 026-0013

SCALE: VERT. DATE
HORIZ. DATE

DRAWN BY
CHECKED BY

DATE: 06/06/06
DGN-SPEC

PLOT DATE = 06/06/06
FILE NAME = #FILE#
USER NAME = #USER#