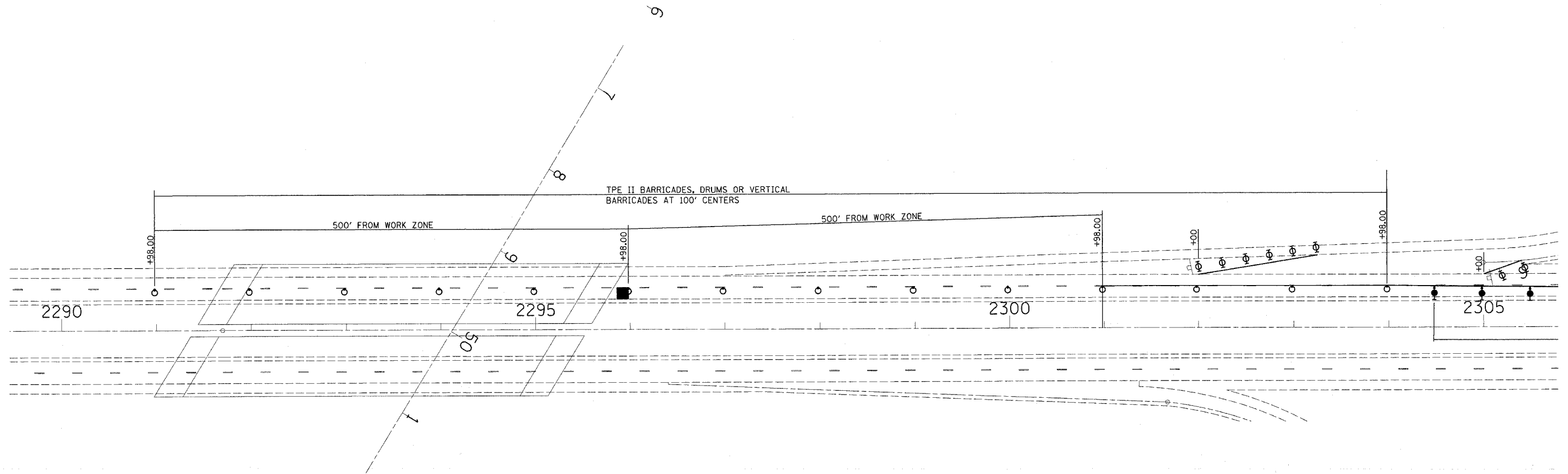


F.A. RTE.	SECTION	COUNTY	TOTAL SHEETS	SHEET NO.
•	••	•••	12	11
STA.		TO STA.		
FED. ROAD DIST. NO.		ILLINOIS FED. AID PROJECT		

- VARIOUS
- D-7 PAVT PATCHING 2007-2
- VARIOUS



**LEGEND**

- CHANGABLE MESSAGE BOARD
- TYPE III BARRICADE W/ ROAD CLOSED SIGN
- SIGN
- DIRECTION INDICATOR BARRICADE WITH STEADY BURN MONODIRECTIONAL LIGHT
- DRUM, TYPE II BARRICADE, OR VERTICAL BARRICADE WITH STEADY BURN MONODIRECTIONAL LIGHT
- TYPE II BARRICADES
- ARROW BOARD

At Location #4, it is the intent of the designer to channelize traffic from the U.S. 45 On Ramp into the I-57/70 SB/WB driving lane a minimum of 500 ft before the work area. Therefore, Traffic Control and Protection, Standard 701411 shall be put in place as per the Highway Standard 701411-03, Application No. 1 at the location shown in the detail. This work shall be paid for at the contract unit price per EACH for TRAFFIC CONTROL AND PROTECTION, STANDARD 701411.

REVISIONS		ILLINOIS DEPARTMENT OF TRANSPORTATION
NAME	DATE	
		TRAFFIC CONTROL DETAIL STANDARD 701401 (SPECIAL)
SCALE: VERT. _____		DRAWN BY _____
HORIZ. _____		
DATE _____		CHECKED BY _____