

F.A.P. RTE.	SECTION	COUNTY	TOTAL SHEETS	SHEET NO.
320		MACON	15	1

* 07 JOINT REPAIRS 2007-3

STATE OF ILLINOIS
DEPARTMENT OF TRANSPORTATION
DIVISION OF HIGHWAYS

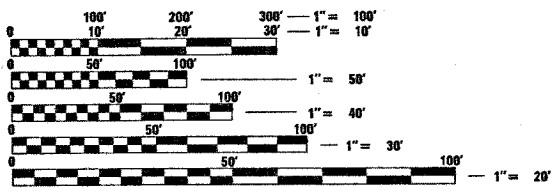
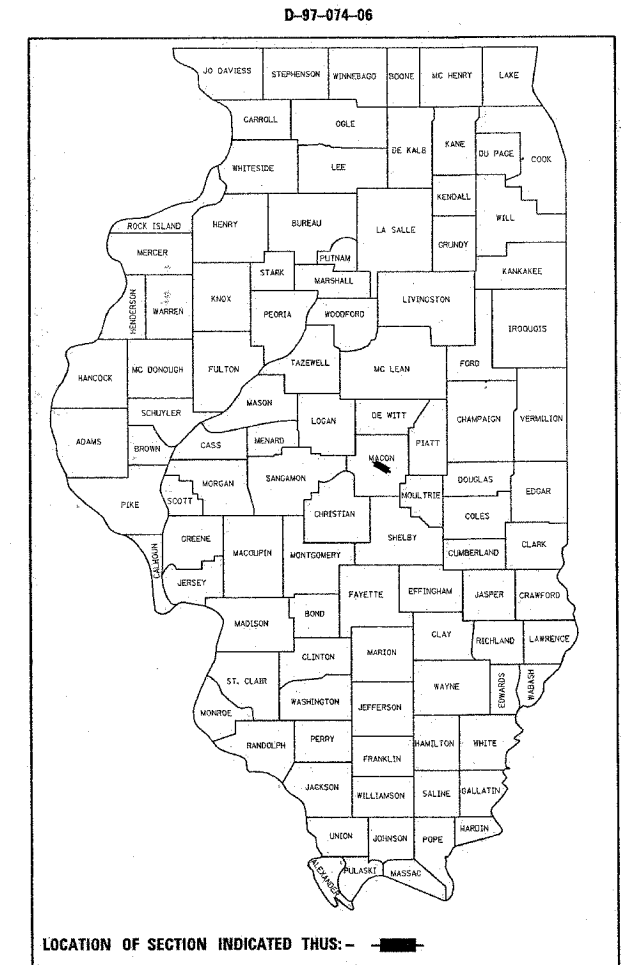
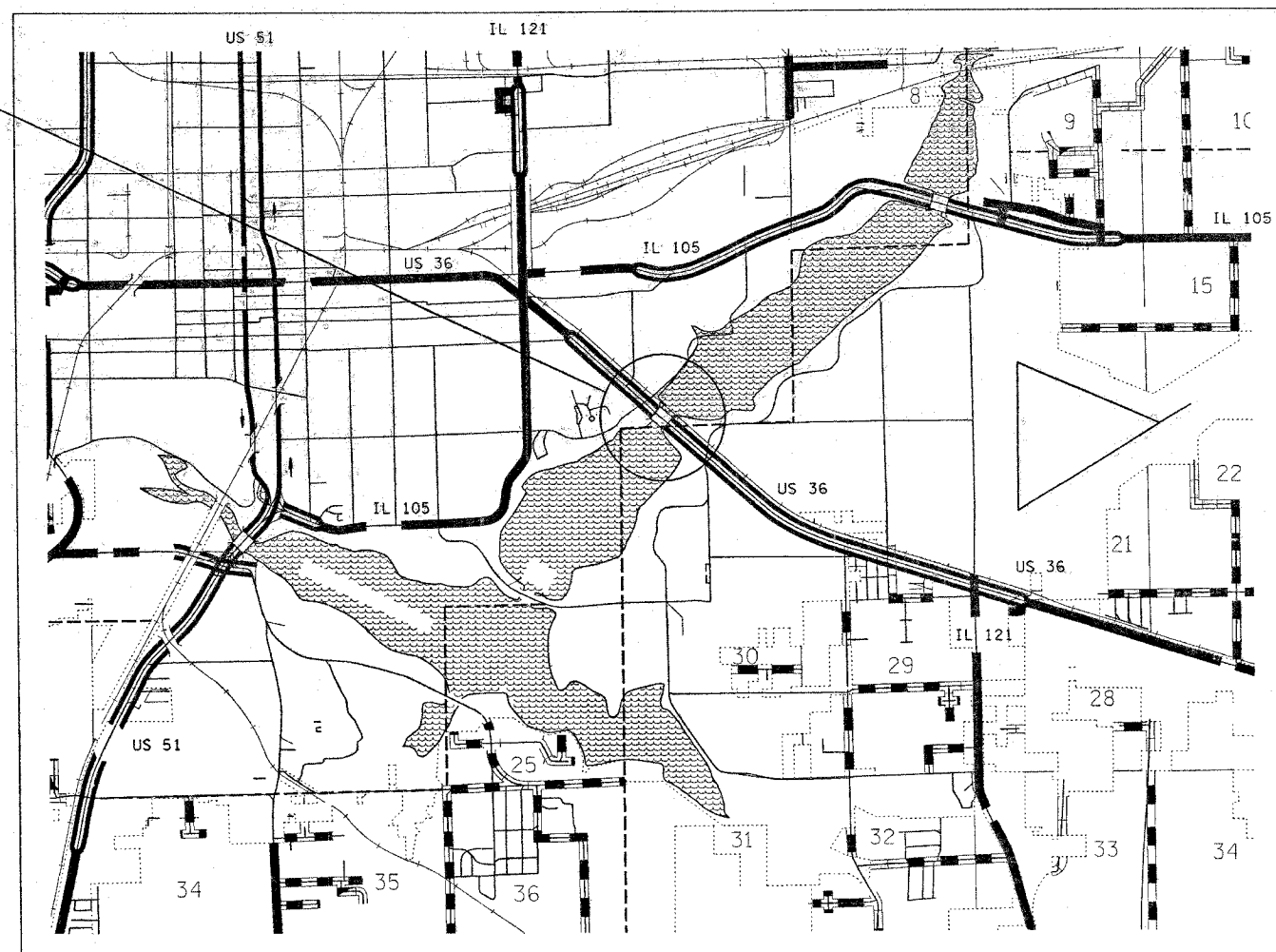
**PROPOSED
HIGHWAY PLANS**

FAP ROUTE 320 (US 36)
SECTION D-7 JOINT REPAIRS 2007-3

MACON COUNTY
C-97-120-06

FOR INDEX OF SHEETS, SEE SHEET NO. 2

STRUCTURE NO. 058-0020
BEGINING STA. 170+98.53
THREE SPAN STRUCTURE
CONTINUOUS STEEL PLATE GIRDERS
WITH REINFORCED CONCRETE DECK
BK. TO BK. ABUTMENT = 464'-10"
END STA. 175+63.37



FULL SIZE PLANS HAVE BEEN PREPARED USING STANDARD ENGINEERING SCALES. REDUCED SIZED PLANS WILL NOT CONFORM TO STANDARD SCALES. IN MAKING MEASUREMENTS ON REDUCED PLANS, THE ABOVE SCALES MAY BE USED.

J.U.L.I.E.
JOINT UTILITY LOCATION INFORMATION FOR EXCAVATION
1-800-992-0123

PROJECT ENGINEER : MIKE ALLEN
SQUAD LEADER :
DESIGNER : KEVIN BRADY
TELEPHONE : 217/342-3951 EX 316 OR 343

STATE OF ILLINOIS
DEPARTMENT OF TRANSPORTATION
DIVISION OF HIGHWAYS

SUBMITTED *March 29th* 20 07

Christina M. Reed
DEPUTY DIRECTOR OF HIGHWAYS, REGION ENGINEER

May 11, 20 07
Eric E. Howard
ENGINEER OF DESIGN AND ENVIRONMENT

May 11, 20 07
Milton R. Sees, P.E.
DIRECTOR OF HIGHWAYS, CHIEF ENGINEER

**PRINTED BY THE AUTHORITY
OF THE STATE OF ILLINOIS**

CONTRACT NO. 74202

ADT (2005) = 25,600

GROSS LENGTH = 4500'
NET LENGTH = 4500'