

F.A.P. RTE.	SECTION	COUNTY	TOTAL SHEETS	SHEET NO.
785	137BR	BOND	29	1

2  
31

STATE OF ILLINOIS  
DEPARTMENT OF TRANSPORTATION  
DIVISION OF HIGHWAYS

**PROPOSED  
HIGHWAY PLANS**

FAP ROUTE 785 (IL ROUTE 140)  
SECTION 137BR

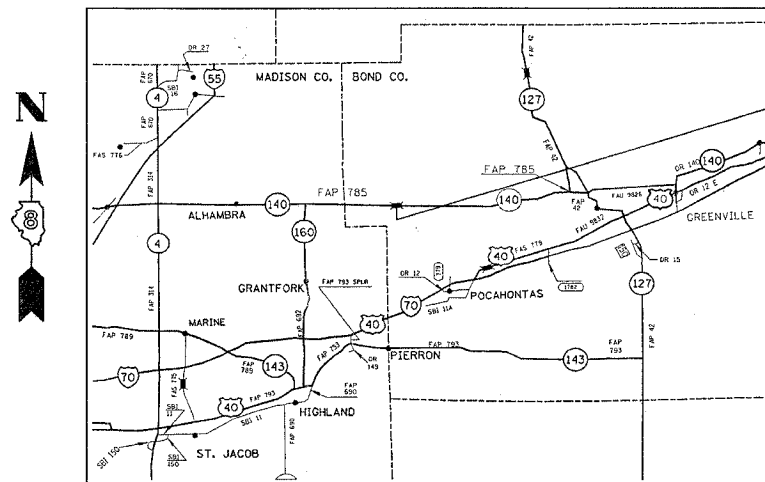
PROJECT: F-0785(026)

**STRUCTURE REMOVAL AND REPLACEMENT WITH  
DUAL 12' X 8' PRECAST CONCRETE BOX CULVERT  
BOND COUNTY**

D-98-006-91



C-98-084-01



PROJECT LOCATION  
STR.# 003-0050 (EXISTING)  
STR.# 003-2013 (PROPOSED)  
STA. 1532+25.50  
LATITUDE 38.88911  
LONGITUDE 89.60551



T 5 N

R 5 W

STATE OF ILLINOIS  
DEPARTMENT OF TRANSPORTATION  
DIVISION OF HIGHWAYS

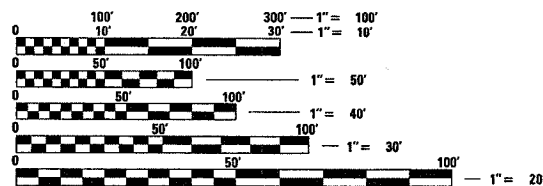
SUBMITTED December 14, 2006

May C. Jamie  
DEPUTY DIRECTOR OF HIGHWAYS, REGION ENGINEER

May 11, 2007  
Eric E. Harndt  
ENGINEER OF DESIGN AND ENVIRONMENT

May 11, 2007  
Milton R. Sepp, P.E.  
DIRECTOR OF HIGHWAYS, CHIEF ENGINEER

FOR INDEX OF SHEETS, SEE SHEET NO. 2



FULL SIZE PLANS HAVE BEEN PREPARED USING STANDARD ENGINEERING SCALES. REDUCED SIZED PLANS WILL NOT CONFORM TO STANDARD SCALES. IN MAKING MEASUREMENTS ON REDUCED PLANS, THE ABOVE SCALES MAY BE USED.

J.U.L.I.E.  
JOINT UTILITY LOCATION INFORMATION FOR EXCAVATION  
1-800-892-0123

DESIGN DESIGNATION

2005 ADT = 1400  
2015 ADT = 1950  
MU = 3.7%  
SU = 4.1%

GROSS LENGTH = 22 FT  
NET LENGTH = 22 FT

**PRINTED BY THE AUTHORITY  
OF THE STATE OF ILLINOIS**

PROJECT ENGINEER: PATTI LEBEAU (618-346-3179)  
SQUAD CONTACT: ART MUEHLFELD (618-346-3209)

CONTRACT NO. 76279